

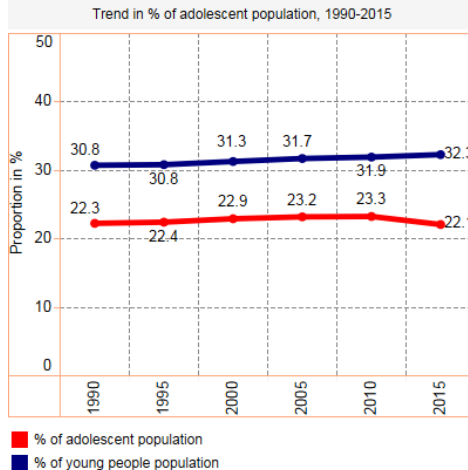


ADOLESCENT HEALTH IN DR CONGO



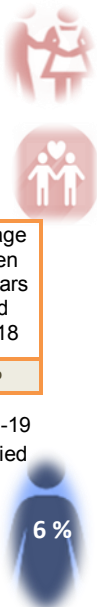
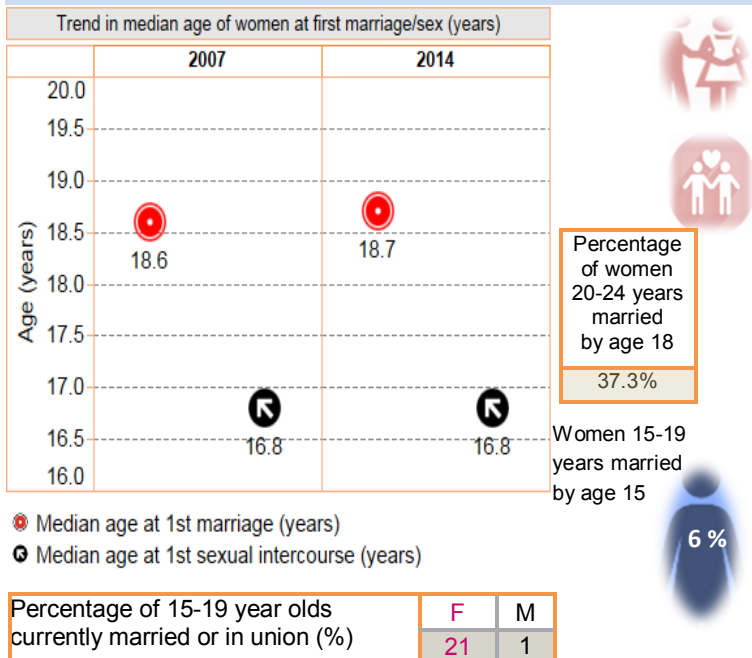
Country profile: An adolescent is a person between 10-19 years of age

Total surface area (million square km)	2.345
Total population (000's)	78,736
Population density (persons/ square km)	34
Urbanized population (%)	43
Adolescents population (000's)	17,401
Adolescent as % of total population	22
Young people (10-24 years) (000's)	24,966
Young people as % of total population	32
Annual average growth rate of population (%)	3
Crude birth rate (births/1,000 population)	42
Life expectancy at birth (years)	60
Median age in total population (years)	17

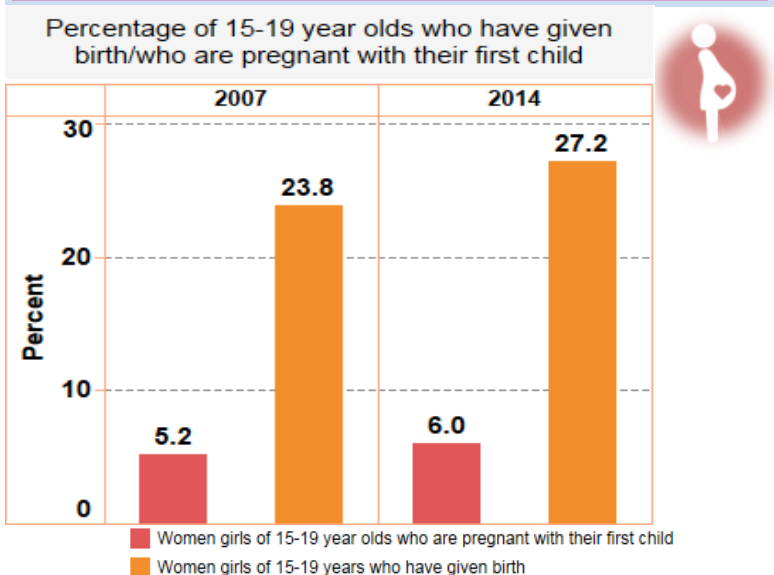


- ✓ National standards for delivery of quality health services to adolescents
- ✓ National strategies for adolescent health
- ✗ No Roadmaps for accelerating HIV prevention testing, treatment and care for adolescents
- ✗ No adolescent health interventions within the HPV
- ✗ No specific target group in national policies for injury prevention among adolescents

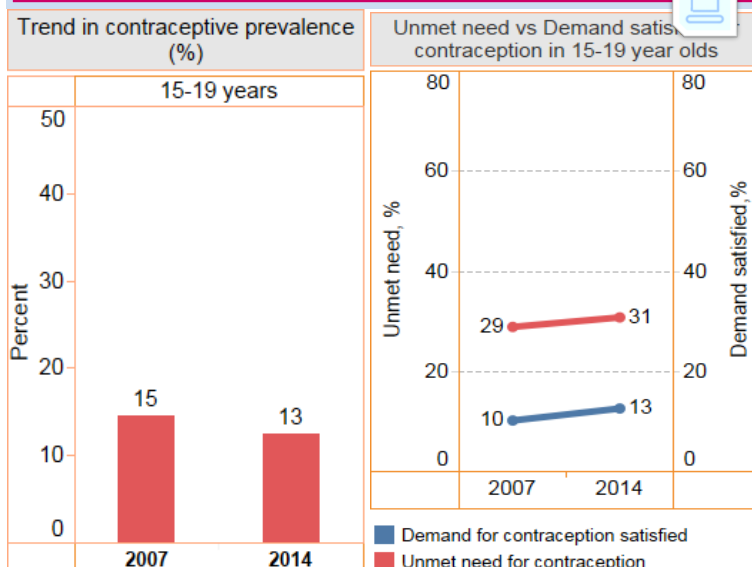
Early marriage



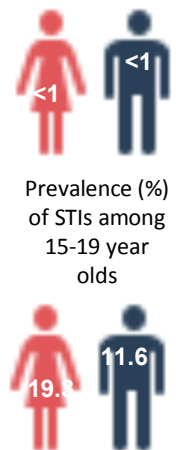
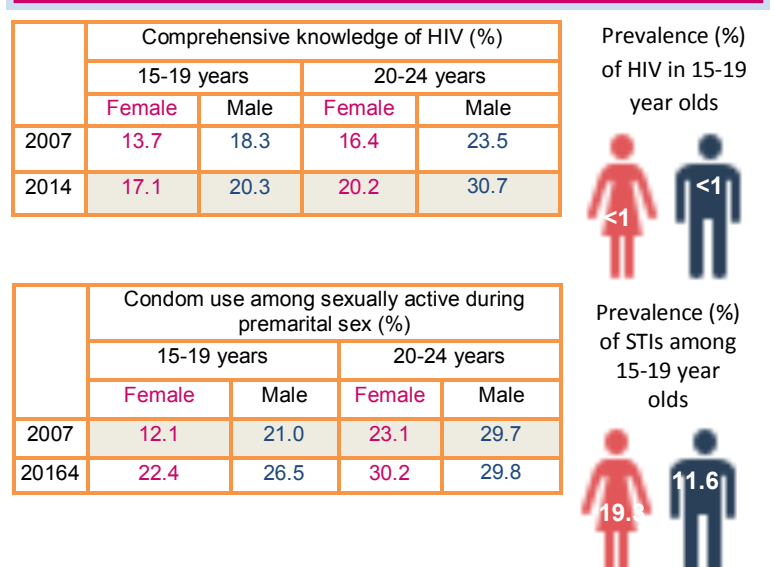
Pregnancy



Contraception



HIV/STIs



Data source: DHS 2007-2014; UNICEF-SOWC 2017; UN DESA, Population Division, WPP 2017; The joint mission from UNICEF and WHO Africa Regional Office June 2017; <http://aidsinfo.unaids.org/#>; WHO-Global health observatory 2018; The World Bank 2018; WHO Global health estimates 2015, Geneva 2016.

For further information:

Child and Adolescent health & Nutrition Programme (afgofrhc@who.int)

Adolescent Health in DR CONGO



Malnutrition

	Aged 15-19		Aged 20-24	
	Female	Male	Female	Male
Prevalence (%) of chronically malnourished (thin, BMI<18.5)	20.8	...	15.4	...
Prevalence (%) of overweight (BMI between 25.0-29.9)	6.2	...	9.5	...
Prevalence (%) iron deficiency anemia (Hgb<12.0 g/dl for non-pregnant women and Hgb<11.0 g/dl for pregnant women)	40.1	37.0	39.6	18.9

Substance use

	Age	Female	Male
Total alcohol consumption among 15-19 year olds (litres of pure alcohol)	15-19	2.8	6.5
Prevalence cigarette or any type of tobacco product use (%)	15-19	2.0	9.6
	20-24	2.0	20.0
Prevalence chewing chat (%)	15-19
	20-24



Violence



Percentage of married adolescents who agree that husband is justified



75%

69%

Sexual and gender-based violence

% of married women who have ever experienced physical, sexual or emotional violence committed by their husband or partner	aged 15-19	49.9
	aged 20-24	60.3
Percentage of victims women of female genital mutilation (%)	aged 15-19	N/A
	aged 20-24	N/A

Injuries and traffic accidents

Adolescent household members injured and unable to carry out normal daily activities of >6 months (%)	...
Adolescent household members injured or killed in accidental fall (%)	...
Adolescent household members injured or killed in road traffic accident (%)	...



Mental health

Prevalence of childhood mental illness (%)	...
Prevalence of mental health related to alcohol, substance use, schizophrenia, seizure disorder and bipolar disorder (%)	...



Immunization

Proportion of adolescent girls vaccinated for HPV to prevent cervical cancer (%)	...
--	-----



Socioeconomic determinants of health

	Female	Male
Literacy rate among 15-19 year olds (%)	77.6	90.0
Percent 15-19 years currently employed (%)	40.9	37.1
Information media use at least once/week among adolescents (%)	38.1	48.7
Social security health insurance among 15-19 year olds (%)	0.0	0.0

The state of adolescent health

Birth rate per 1000 girls 15-19 year olds	138	Trend in Mortality rates per 100,000 in 15-19 year olds	
		2007	2014
Girls 15-19 year olds who have given birth or are pregnant with their first child (%)	6.0	4.5	5.0
		4.1	3.7

Leading causes of girls' death

Rank, cause name, number of deaths and death rate, age 10-19

Rank	Cause name	Number of deaths	Death rate/100,000 pop
1	Lower respiratory infections	2,579	29.8
2	Meningitis	1,917	22.1
3	Maternal conditions	1,770	20.4
4	Diarrhoeal diseases	1,310	15.1
5	Road injury	1,122	13.0

Leading causes of boys' death

Rank, cause name, number of deaths and death rate, age 10-19

Rank	Cause name	Number of deaths	Death rate/100,000 pop
1	Road injury	2,757	31.5
2	Lower respiratory infections	1,888	21.6
3	Sickle cell disorders and trait	1,607	18.4
4	Drowning	1,574	18.0
5	Diarrhoeal diseases	1,526	17.5