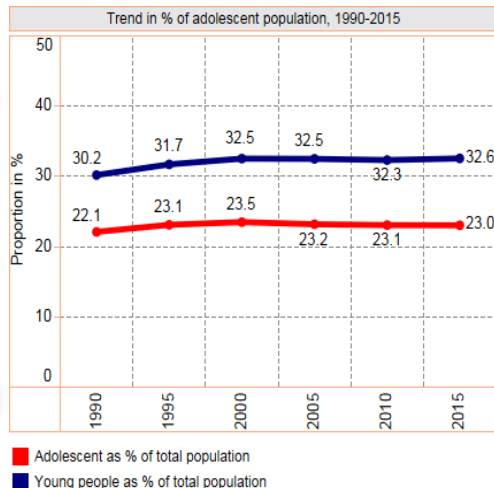


# ADOLESCENT HEALTH IN SIERRA LEONE

## 2018

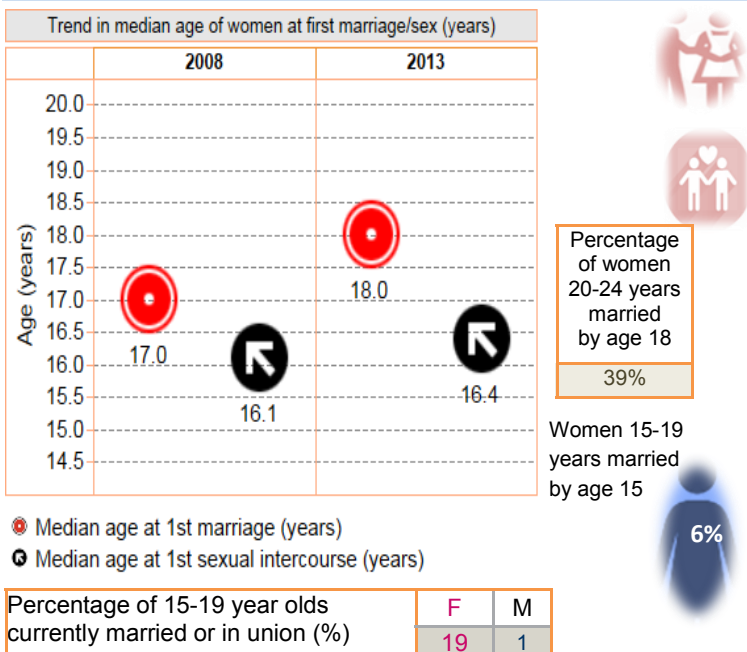
**Country profile:** An adolescent is a person between 10-19 years of age

Total surface area (million sq. km)	0.072
Total population (000's)	7,396.190
Population density (persons/sq km)	100.264
Urbanized population (%)	40.318
Adolescent population (000's)	1,704.346
Adolescent as % of total population	23.044
Young people (10-24 years) (000's)	2,100.729
Young people as % of total population	32.558
Annual average growth rate of population (%)	1.951
Crude birth rate (births per 1,000 population)	35.006
Life expectancy at birth (years)	51.835
Median age of the total population (years)	18.333
Birth rate per 1000 girls 15-19 years olds	125.000

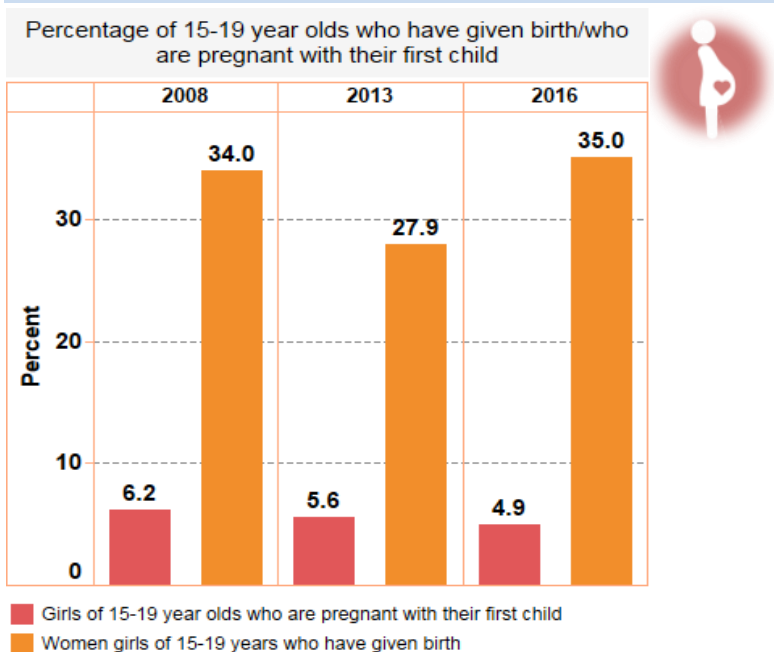


- ✓ National standards for delivery of quality health services to adolescents
- ✓ National strategies for adolescent health
- ✗ No Roadmaps for accelerating HIV prevention testing, treatment and care for adolescents
- ✓ No Adolescent health interventions within the HPV vaccination
- ✓ Specific target group in national policies for injury prevention among adolescents

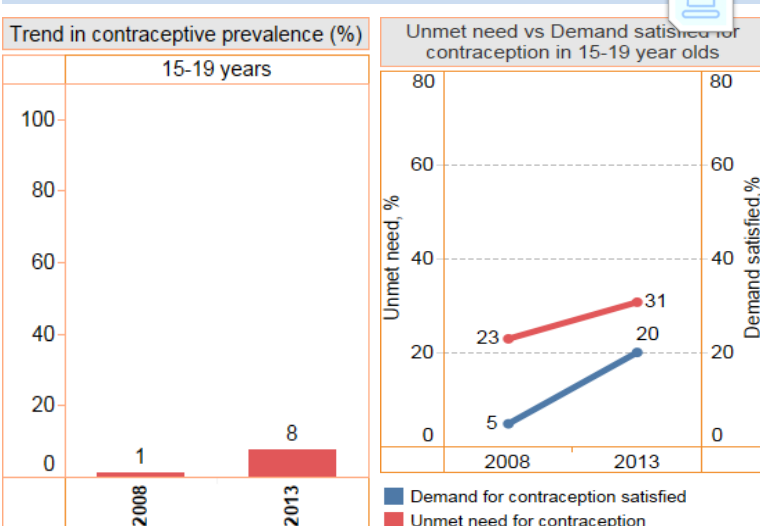
### Early marriage



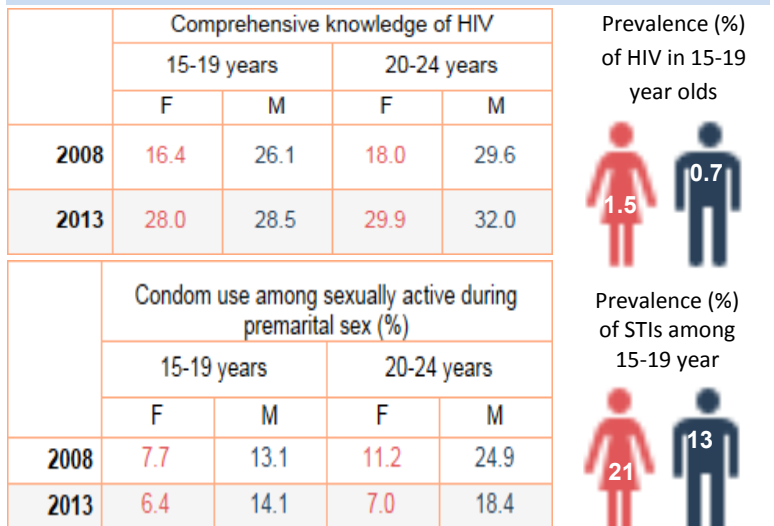
### Pregnancy



### Contraception



### HIV/STIs



# ADOLESCENT HEALTH IN SIERRA LEONE

## 2018



### Malnutrition

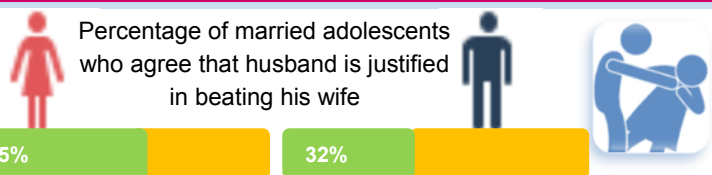
		15-19 years		20-24 years	
		Female	Male	Female	Male
Prevalence (%) of chronically malnourished (thin, BMI<18.5)	2008	16.0		12.7	
	2013	15.4	26.4	8.3	7.5
Prevalence (%) of overweight (BMI between 25.0-29.9)	2008	17.8		19.6	
	2013	6.2	2.2	9.8	4.3
Prevalence (%) of iron deficiency anemia (Hgb<12.0 g/dl for non-pregnant women and Hgb<11.0 g/dl for pregnant women)	2008	50.6	45.0	44.8	33.1
	2013	49.5	42.0	43.6	31.3

### Substance use

			Female	Male
Total alcohol consumption among 15-19 year olds (litres of pure alcohol)	15-19 years	2010	2.6	10.9
	15-19 years	2008	1.6	9.9
Prevalence cigarette or any other tobacco product use (%)	15-19 years	2013	0.7	3.8
		20-24 years	2008	5.4
	20-24 years	2013	4.1	15.1



### Violence



			Female
% of married women who have ever experienced physical or sexual or emotional violence committed by their husband or partner	15-19 years	2013	41.7
	20-24 years	2013	52.6
Prevalence of victims women of femal genital mutilation (%)	15-19 years	2008	75.5
		2013	74.3
	20-24 years	2008	89.4
		2013	87.5

### Injuries and traffic accidents

Adolescent household members injured and unable to carry out normal daily activities of >6 months (%)	...
Adolescent household members injured or killed in accidental fall (%)	...
Adolescent household members injured or killed in road traffic accident (%)	...



### Mental health

	Female	Male
Prevalence of childhood mental illness among 15-19 year olds (%)	...	...
Felt seriously worthless/hopeless or wishes to be dead among 15-19 year olds (%)	...	...



### Immunization

Proportion of adolescent girls vaccinated for HPV to prevent cervical cancer (%)	...
--	-----



### Socioeconomic determinants of health

		Female	Male
Literacy rate among 15-19 year olds (%)	2008	54.7	73.3
	2013	70.9	79.0
	2016	72.0	
Percent 15-19 year currently employed (%)	2008	46.6	51.8
	2013	42.5	45.6
	2016		
Information media use at least once/week among adolescents (%)	2016	48.9	55.3
	2008	0.2	0.0
Social security health insurance among 15-19 year olds (%)	2008	0.0	0.0
	2013	0.0	0.3

### Adolescent Mortality

Trend in Mortality rates per 100,000 in 15-19 year olds

2008



### Leading causes of girls' death

Rank, cause name, number of deaths and death rate, age 10-19

Rank	Cause name	Number of deaths	Death rate/100, 000 pop
1	Meningitis	360	41.9
2	Lower respiratory infections	303	35.2
3	Sickle cell disorders and trait	291	33.9
4	Maternal conditions	258	30.0
5	Diarrhoeal diseases	223	25.9

### Leading causes of boys' death

Rank, cause name, number of deaths and death rate, age 10-19

Rank	Cause name	Number of deaths	Death rate/100, 000 pop
1	Meningitis	398	47.1
2	Lower respiratory infections	312	36.9
3	Diarrhoeal diseases	193	22.8
4	Road injury	171	20.2
5	Drowning	159	18.9