



Ministry of Health and Social Services  
Republic of Namibia

Situational Report No.15 for COVID-19 Namibia			
Outbreak Name	COVID-19	Country affected	Namibia
Date & Time of report	02 April 2020 22:00	Investigation start date	13 March 2020
Prepared by	Surveillance Team		

Date of outbreak declaration in Namibia: 14 March 2020.

1. SITUATION UPDATE / HIGHLIGHTS

- A new confirmed case was reported on 02 April 2020
- Cumulatively, 14 confirmed cases reported;
- Supervised quarantine for all Namibians arriving from affected countries for 14 days is ongoing
- Partial lockdown of Erongo and Khomas regions took effect on 28 March 2020 till 16 April 2020.
  - Borders have been closed except for essential/critical services and humanitarian support to the response.
  - All others prevention measure are applicable to the entire country
- Key Challenges include:
  - Inadequate isolation and quarantine facilities,
  - Inadequate human resources
  - Inadequate material supplies including PPE, ICU units and ventilators.
  - Inadequate infrastructure, equipment and supplies at Points of Entry

2. BACKGROUND

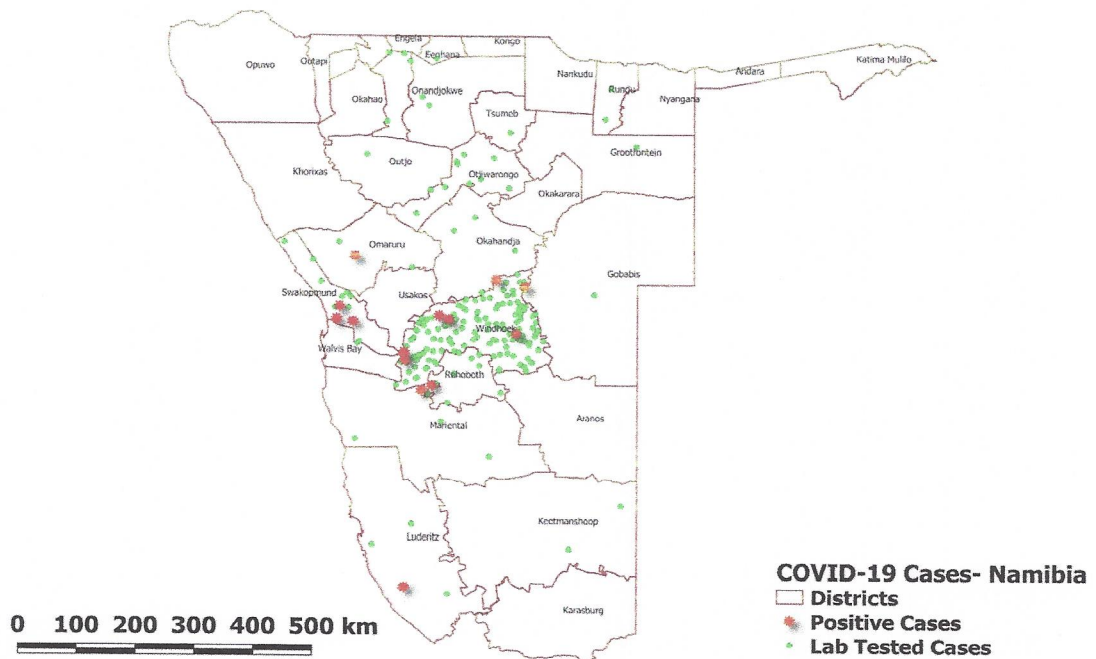
Description of the latest cases

- **Index cases:** Two confirmed cases of COVID-19 were reported in Windhoek district on 13 March 2020. The married couple; a 35-year-old male and a 25-year-old female, arrived from Madrid, Spain on 11 February 2020.
- The two cases reported on 1 April 2020, are family members of case number 9 and they arrived together from South Africa on 17 March 2020.
  - A husband of case number 9, is a 36-year-old male Namibian, whose sample was collected in Swakopmund on the 28 March 2020 and sent to NIP Windhoek for testing. He presented fever, chills, sore throat, body pain, and headache.

- A daughter of case 9 and 12, is a 9-month-old female Namibian, whose sample was also taken in Swakopmund on the 28<sup>th</sup> March 2020 and sent to Windhoek NIP for testing. She presented with fever, chills, and poor appetite.
- They are both being isolated together with case number 10 in their house in Swakopmund.
- The new case (#14) is a 35 years old Namibian female, who tested in Windhoek on the 28 March 2020 after presenting with fever, cough, sore throat, and headache.
  - The test came out inconclusive twice, before it was sent to the regional reference laboratory for confirmation, then the results came out positive on 2<sup>nd</sup> April 2020. She is a health worker (1<sup>st</sup> health care worker infection to be detected in the country).

**Table 1: Confirmed cases by region as of 2 April 2020**

Reporting region	Total Cases	New cases	Active cases	Recovered	Death
Khomas	9	1	8	1	0
Karas	1	0	1	0	0
Erongo	4	2	4	0	0
<b>Total</b>	<b>14</b>	<b>3</b>	<b>13</b>	<b>1</b>	<b>0</b>



**Figure 1: Suspected and confirmed COVID-19 cases in Namibia per District, as of 02 April 2020**

### 3. PUBLIC HEALTH ACTION / RESPONSE INTERVENTIONS

#### EPIDEMIOLOGY & SURVEILLANCE

- **Case definitions as of 20 March 2020:**

- **Suspect case:**

- A. A patient with acute respiratory illness (fever and at least one sign/symptom of respiratory disease, e.g., cough, shortness of breath), AND a history of travel to or residence in a location reporting community transmission of COVID-19 disease during the 14 days prior to symptom onset;

- OR

- B. A patient with any acute respiratory illness AND having been in contact with a confirmed or probable COVID-19 case (see definition of contact) in the last 14 days prior to symptom onset;

- OR

- C. A patient with severe acute respiratory illness (fever and at least one sign/symptom of respiratory disease, e.g., cough, shortness of breath; AND requiring hospitalization) AND in the absence of an alternative diagnosis that fully explains the clinical presentation.

- **Probable case:** A suspect case for whom testing for COVID-19 is inconclusive. Inconclusive being the result of the test reported by the laboratory

- **Confirmed case:** A person with laboratory confirmation of COVID-19 infection, irrespective of clinical signs and symptoms.

- ***Surveillance activities***

- Daily pillar and intra-pillar discussions are held to deliberate daily progress, gaps and way forward;
  - Contact tracing is ongoing (see table 2)
  - Call centre continue operations for 24 hours per day.
  - People under mandatory quarantine are being monitored daily (see table 3)
  - Training is ongoing in Erongo region for surveillance and contact tracing until 4 April 2020. Two regions (Omusati, and Oshana) have not attended surveillance training. The virtual training platform for surveillance training are underway for Omusati, and Oshana
  - Session on contact tracing and Case Investigation Form for health care workers throughout Namibia provided on 2 & 3 April 2020 using ECHO platform

## Contact tracing Summary

**Table 2: Contacts tracing summary as of 02 .04.2020**

Variables	Contact risk level			
	High	Medium	Low	Total
Contacts identified	33	26	90	149
Number of contacts traced today	12	9	28	49
Number of contacts monitored today	8	4	11	23
Contacts completed 14 days follow up today	11	14	54	79
Number of contacts that developed signs & symptoms tested	5	1	4	10
*Number of contacts without signs and symptoms tested	3	0	1	4
© Number of contacts lost to follow up	0	2	5	7
# Contacts never reached	0	0	3	3

\*Number of (highly exposed) contacts without signs & symptoms tested. One tested positive.

© Seven contacts are lost to follow up, all are non-Namibians and have travelled back to their countries.

# Three contacts could not be reached as they did not provide contact numbers

**Table 3: Number of people in mandatory quarantine facility of 02.04.2020**

Name of the Facility	Number of people	Number of people who developed signs & symptoms
Hardap Resort	40	0
Rock Lodge (Debmarine)	37	0
Other places in Windhoek	134	4
Zambezi Waterfront park	68	3
Gross Barman	22	0
<b>Total</b>	<b>301</b>	<b>7</b>

## LABORATORY INVESTIGATIONS

- Stock level of testing kits at NIP is low, only 525 laboratory extraction phase.
- As of 2 April 2020, a total of 340 COVID-19 specimens were recorded in the two laboratories (NIP and PathCare) as per table below:

**Table 4: COVID-19 specimens recorded in at NIP and Path care as of 02.04.2020**

As of 01/04/2020	Laboratory			Total
	NIP	Path care	South Africa	
Total sample sent to the Laboratory	184	156	-	340
Total sample tested	132	154	-	286
Total results received	132	154	-	286
Total results positive	7	6	*1	14
Total results negative	122	148	-	270
Total results pending	20	0	-	20
Total results inconclusive	3	0	-	3
Total sample discarded	26	2	-	28
Total new suspected cases in last 24 hours	12	0	-	12

\*1 Patient specimen collected and tested in South Africa

## **COORDINATION AND LEADERSHIP:**

- National Health Emergency Management Committee on COVID-19 response was activated on 14 March 2020.
- Coordination meetings are held daily.
- His Excellency the President of the Republic of Namibia, declared a lockdown for Khomas Region and Erongo Region and all prevention measures are applicable to the entire country for 21 days effective as of 28 March 2020.
- Organograms for EOC, Standard Operating procedures and other organizational/management aspects have been put together and are ready for submission and endorsement by Senior Management.
- Various partners are actively participating in different pillar groups for COVID-19 response.

## **CASE MANAGEMENT**

- Out of 14 confirmed cases, one has been discharged after he recovered and tested negative.
- The other 13 confirmed cases are in stable conditions.
- Training on COVID-19 is ongoing, daily sessions at Robert Mugabe, WCH and KSH. Zoom meeting held weekly
- Conversion of casualty department at WCH into a highly infectious referral ICU underway (anticipated to be completed by 03 April 2020).
- A 12-bed Isolation Unit is under construction at final stage of completion at WCH.
- Honourable Prime Minister visited both WCH casualty and isolation facility under construction on 31 March 2020
- Project Active Case Finding (ACF) is currently underway in Khomas, Erongo and Kharas regions, aimed to look for possible community transmission
- Standard Operating Procedures are currently being revised

## **LOGISTICS:**

- Facilitation of the allocation of quarantine facilities in the country.
- Procurement of PPE, Medical suppliers and pharmaceuticals
- Provision of commodities specifications and verification for procurement

## **RISK COMMUNICATION AND COMMUNITY ENGAGEMENT:**

- Educational sessions continue to be conducted in various media
- Psychosocial support is being offered on daily basis to people under quarantine
- The communication hub where press conferences and live streams are to be broadcasted was launched on 2 March 2020 by The two Honourable Ministers of MoHSS and MICT.
- The video clips with the special messages on COVID-19 from the Honourable Deputy Minister of MICT started airing on NBC TV. Plans are underway to have these video air on One Africa TV.
- The MoHSS continue to conduct press briefing as the situation progresses.


## **CHALLENGES**

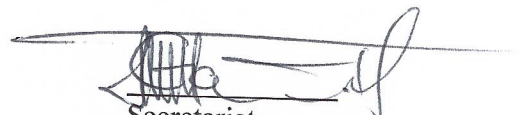
- Inadequate and at some places lack of isolation units at health facilities and at points of entry in the regions.
- Inadequate PPE and printed IEC materials on COVID-19
- Insufficient COVID-19 laboratory testing kits

## **RECOMMENDATIONS**

- Establish fully equipped isolation units at health facilities and at points of entry in the regions.
- Fast track procurement process for Personal Protective Equipment and COVID-19 laboratory testing kits
- Expedite printing of IEC materials in different vernacular languages

**Approved:**

  
\_\_\_\_\_  
Incident Manager  
Date: 02.04.2020

  
\_\_\_\_\_  
Secretariat