



Ministry of Health and Social Services
Republic of Namibia

Situational Report No.16 for COVID-19 Namibia			
Outbreak Name	COVID-19	Country affected	Namibia
Date & Time of report	03 April 2020 21:00	Investigation start date	13 March 2020
Prepared by	Surveillance Team		

Date of outbreak declaration in Namibia: 14 March 2020.

1. SITUATION UPDATE / HIGHLIGHTS

- No new confirmed case was reported on 03 April 2020
- Cumulatively, 14 confirmed cases reported;
- Supervised quarantine for all Namibians arriving from other countries for 14 days is ongoing
- Partial lockdown of Erongo and Khomas regions took effect on 28 March 2020 till 16 April 2020.
 - Borders have been closed except for essential/critical services and humanitarian support to the response.
 - All others prevention measures are applicable to the entire country
- **Key Challenges include:**
 - Inadequate isolation and quarantine facilities,
 - Inadequate human resources at all levels
 - Chronic shortage of PPEs, amidst logistic supply chain problems of PPEs
 - Inadequate material supplies including ICU units and ventilators.
 - Inadequate infrastructure, equipment and supplies at Points of Entry

2. BACKGROUND

Description of the latest cases

- **Index cases:** Two confirmed cases of COVID-19 were reported in Windhoek district on 13 March 2020. The married couple; a 35-year-old male and a 25-year-old female, arrived from Madrid, Spain on 11 February 2020.
- The two cases reported on 1 April 2020, are family members of case number 9 and they arrived together from South Africa on 17 March 2020.
 - A husband of case number 9, is a 36-year-old male Namibian, whose sample was collected in Swakopmund on the 28 March 2020 and sent

- to NIP Windhoek for testing. He presented fever, chills, sore throat, body pain, and headache.
- A daughter of case 9 and 12, is a 9-month-old female Namibian, whose sample was also taken in Swakopmund on the 28th March 2020 and sent to Windhoek NIP for testing. She presented with fever, chills, and poor appetite.
 - They are both being isolated together with case number 9 in their house in Swakopmund.
- Case (#14) is a 35 years old Namibian female health worker, who tested in Windhoek on the 28 March 2020 after presenting with fever, cough, sore throat, and headache.
 - The test came out inconclusive twice, before it was sent to the regional reference laboratory for confirmation, then the results came out positive on 2nd April 2020. She is the 1st health care worker to be confirmed positive for COVID-19 in the country).

Table 1: Confirmed cases by region as of 3 April 2020

Reporting region	Total Cases	New cases	Active cases	Recovered	Death
Khomas	9		8	1	0
Karas	1	0	1	0	0
Erongo	4		4	0	0
Total	14	0	13	1	0

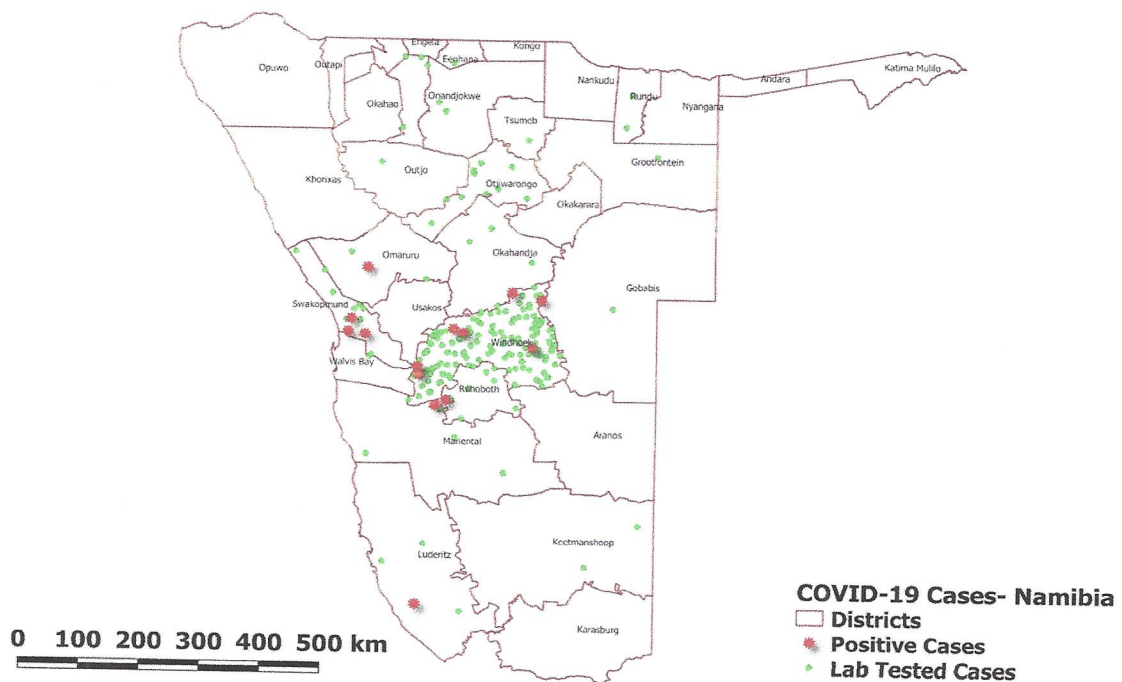


Figure 1: Suspected and confirmed COVID-19 cases in Namibia per District, as of 03 April 2020

3. PUBLIC HEALTH ACTION / RESPONSE INTERVENTIONS

EPIDEMIOLOGY & SURVEILLANCE

- **Case definitions as of 20 March 2020:**

Suspect case:

A. A patient with acute respiratory illness (fever and at least one sign/symptom of respiratory disease, e.g., cough, shortness of breath), AND a history of travel to or residence in a location reporting community transmission of COVID-19 disease during the 14 days prior to symptom onset;

OR

B. A patient with any acute respiratory illness AND having been in contact with a confirmed or probable COVID-19 case (see definition of contact) in the last 14 days prior to symptom onset;

OR

C. A patient with severe acute respiratory illness (fever and at least one sign/symptom of respiratory disease, e.g., cough, shortness of breath; AND requiring hospitalization) AND in the absence of an alternative diagnosis that fully explains the clinical presentation.

Probable case: A suspect case for whom testing for COVID-19 is inconclusive. Inconclusive being the result of the test reported by the laboratory

Confirmed case: A person with laboratory confirmation of COVID-19 infection, irrespective of clinical signs and symptoms.

- **Surveillance activities**
 - Daily pillar and intra-pillar discussions are held to deliberate daily progress, gaps and way forward;
 - Contact tracing is ongoing (see table 2)
 - Call centre continue operations for 24 hours per day.
 - People under mandatory quarantine are being monitored daily (see table 3)
 - Training is ongoing in Erongo region for surveillance and contact tracing until 4 April 2020. Two regions (Omusati, and Oshana) have not attended surveillance training. The virtual training platform for surveillance training are underway for Omusati, and Oshana
 - Data entry is ongoing and data dashboards are under development using existing platforms.

Contact tracing Summary

Table 2: Contacts tracing summary as of 03 .04.2020

Variables	Contact risk level			
	High	Medium	Low	Total
Number of potential contacts	33	27	97	157
Number of contacts identified	32	27	87	146
Number of active contacts	17	10	26	53
Number of contacts monitored	13	5	11	29
Contacts of contacts discharged	11	14	61	86
Number of contacts that developed signs & symptoms tested	6	1	4	11
*Number of contacts without signs and symptoms tested	8	1	5	14
Number of contacts tested positive	3	1	0	4
© Number of contacts lost to follow up	0	2	5	7
# Contacts never reached	0	0	3	3

*Number of (highly exposed) contacts without signs & symptoms tested. One tested positive.

© Seven contacts are lost to follow up, all are non-Namibians and have travelled back to their countries.

Three contacts could not be reached as they did not provide contact numbers

Table 3: Number of people in mandatory quarantine facility of 03.04.2020

Name of the Facility	Number of people	Number of people who developed signs & symptoms
Hardap Resort	40	0
Rock Lodge (Debmarine)	37	0
Other places in Windhoek	134	4
Zambezi Waterfront park	68	3
Gross Barman	22	0
Total	301	7

LABORATORY INVESTIGATIONS

- Stock level of testing kits at NIP is low, only 525 laboratory extraction phase.
- As of 3 April 2020, a total of 353 COVID-19 specimens were recorded in the two laboratories (NIP and PathCare) as per table below:

Table 4: COVID-19 specimens recorded in at NIP and Path care as of 03.04.2020

As of 03/04/2020	Laboratory			Total
	NIP	Path care	South Africa	
Total sample sent to the Laboratory	197	156	-	353
Total sample tested	144	154	-	298
Total results received	137	154	-	291
Total results positive	7	6	*1	14
Total results negative	126	148	-	274
Total results pending	24	0	-	24
Total results inconclusive	4	0	-	4
Total sample discarded	28	2	-	30
Total new suspected cases in last 24 hours	11	0	-	11

**1 Patient specimen collected and tested in South Africa*

COORDINATION AND LEADERSHIP:

- COVID-19 responders from all 8 thematic groups have been activated and are operating at the National Public Health Emergency Operation Centre (PHEOC) since 14 March 2020.
- Coordination and other pillar team meetings on COVID-19 response are held daily.
- A Media Centre for providing up-to date and accurate information has been established at the Khomas Regional Council offices and provides daily updates twice a day – 10am and 4pm by the MoHSS and key stakeholders.
- Monitoring and Evaluation is being conducted regularly to ensure smooth coordination of COVID-19 interventions.
- Organograms for EOC, Standard Operating procedures and other organizational/management aspects have been put together and are ready for submission and endorsement by Senior Management.
- Various partners are actively participating in different pillar groups for COVID-19 response.

CASE MANAGEMENT

- Out of 14 confirmed cases, one has been discharged after he recovered and tested negative.
- The other 13 confirmed cases are in stable conditions.
- Training on COVID-19 is ongoing, daily sessions at Robert Mugabe, WCH and KSH. Zoom meeting held weekly
- Conversion of casualty department at WCH into a highly infectious referral ICU underway.
- A 12-bed Isolation Unit is under construction at final stage of completion at WCH.
- Ramatex renovation underway to be repurposed as an isolation facility
- Repurposed hotels/lodges/resorts identified for accommodation of front-liners and asymptomatic/mild suspect/probable/confirmed cases of COVID-19.
 - Medical staff on call in Windhoek have already moved into a local hotel
- Consultations with UNAM to avail a clinic for COVID-19 patients is ongoing.
- More screening sites have been identified in the regions.
- Project Active Case Finding (ACF) is currently underway in Khomas, Erongo and Karas regions, aimed to look for possible community transmission

LOGISTICS:

- Facilitation of the allocation of quarantine facilities in the country.
- Procurement of PPE, Medical suppliers and pharmaceuticals
- Provision of commodities specifications and verification for procurement

RISK COMMUNICATION AND COMMUNITY ENGAGEMENT:

- Educational sessions continue to be conducted in various media
- Psychosocial support is being offered on daily basis to people under quarantine
- The communication hub where press conferences and live streams are to be broadcasted was launched on 2 March 2020 by The two Honourable Ministers of MoHSS and MICT.
- The video clips with the special messages on COVID-19 from the Honourable Deputy Minister of MICT started airing on NBC TV. Plans are underway to have these video air on One Africa TV.
- The MoHSS continue to conduct press briefing as the situation progresses.

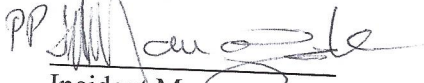
CHALLENGES

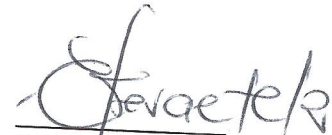
- Inadequate and at some places lack of isolation units at health facilities and at points of entry in the regions.
- Inadequate PPE and printed IEC materials on COVID-19
- Insufficient COVID-19 laboratory testing kits

RECOMMENDATIONS

- Establish fully equipped isolation units at health facilities and at points of entry in the regions.
- Fast track procurement process for Personal Protective Equipment and COVID-19 laboratory testing kits
- Expedite printing of IEC materials in different vernacular languages

Approved:


Incident Manager
Date: 03.04.2020


Secretariat