

South Sudan

Integrated Disease Surveillance and Response (IDSR)

Epidemiological Bulletin Week 13, 2020 (March 23 – March 29)



Major Epidemiological Highlights in week 13 of 2020

- In week 13, 2020 IDSR reporting completeness was 95% and timeliness was 86% at health facility level. EWARN reporting both completeness and timeliness were 89%
- Of the 143 alerts in week 13, 2020; 72% were verified 0% were risk assessed and 0% required a response. Malaria (39), AWD (29), measles (10) and bloody diarrhea (29) were the most frequent alerts in week 13, 2020
- In the week, six(6) suspect COVID-19 cases reported from Juba (4); Maban (1); and Angok (1). No confirmed COVID-19 cases in South Sudan.
- Measles cases continue to be reported in Awiel East and Bentiu PoC
- Since week 7 of 2019, a total of 299 ILI/SARI samples have been collected and tested in UVRI 228 being negative; 6 (3%) positive for Influenza B (Victoria); 13(7%) positive for Influenza A (H3); and 12(6%) positive for Influenza A (H1)pdm09 and (20) samples are pending test results.

SURVEILLANCE PERFORMANCE

For the Integrated Disease Surveillance (IDSR)
network and Early warning alert and response
network (EWARN)

IDSR Timeliness and Completeness Performance at Facility Level for week 13, 2020

Completeness States Ranking	States	Supporting Partners	Total No. of Functional Health Facilities in the State	No. of HFs Reported on Time	Timeliness Percentage	No. of HFs Reported regardless of Time	Completeness Percentage
1st	WES	AMREF, World Vision, CUAMM, CDTY, OPEN	213	212	100%	212	100%
2nd	Lakes	Doctors with Africa (CUAMM), LIVEWELL	113	99	88%	113	100%
3rd	Warrap	GOAL, CCM, WVI, Malaria Consortium, UNKEA, Save the Children, MSF	120	113	94%	118	98%
4th	Upper Nile	Cordaid, WVI, RI, IMC, NIDO, UNKEA, MC, SSAID	115	97	84%	113	98%
5th	NBG	Malaria Consortium, Healthnet TPO, IRC, CEDS, IHO	130	101	78%	126	97%
6th	EES	Cordaid, HLSS, CCM	145	123	85%	138	95%
7th	CES	HLSS, SSUHA, Healthnet TPO, IHO, GOAL, TRI-SS, THESO	125	112	90%	116	93%
8th	WBG	Cordaid, Healthnet TPO, CARE International	77	56	73%	70	91%
9th	Jonglei	Nile Hope, MDM, JDF, Livewell, CMD, HFO, EDA, CRADA, Malaria Consortium, CMA	155	125	81%	138	89%
10th	Unity	Cordaid, UNIDOR, IRC, CHADO, CARE International, CRADA, CASS	91	67	74%	80	88%
	South Sudan		1284	1105	86%	1224	95%

Key

	<60%	Poor
	61%-79%	Fair
	80%-99%	Good
	100%	Excellent

The timeliness of IDSR reporting (supported by EWARS mobile) at health facility level was 86% and completeness was 95%. All 10 states are above the target of 80% with highest reporting rate in WES and Lakes with completeness of 100%.

IDSR Timeliness and Completeness Performance at County Level for week 13, 2020 (1)

Counties	Supporting Partners	Total No. of Functional Health Facilities in the County	No. of HFs Reported on Time	Timeliness Percentage	No. of HFs Reported regardless of time	Completeness Percentage
Rumbek Centre	Doctors with Africa (CUAMM)	23	18	78%	23	100%
Rumbek East	Doctors with Africa (CUAMM)	24	22	92%	24	100%
Rumbek North	Doctors with Africa (CUAMM)	7	5	71%	7	100%
Wulu	Doctors with Africa (CUAMM)	14	12	86%	14	100%
Cueibet	Doctors with Africa (CUAMM)	15	14	93%	15	100%
Yirol East	Doctors with Africa (CUAMM),LIVEWELL	11	11	100%	11	100%
Yirol West	Doctors with Africa (CUAMM)	12	10	83%	12	100%
Awerial	Doctors with Africa (CUAMM)	7	7	100%	7	100%
Yambio	World Vision International	42	42	100%	42	100%
Ibba	AMREF	11	11	100%	11	100%
Maridi	AMREF	26	26	100%	26	100%
Mundri West	CUAMM	21	21	100%	21	100%
Mundri East	CUAMM	19	19	100%	19	100%
Tambura	World Vision International	26	26	100%	26	100%
Mvolo	CUAMM	11	11	100%	11	100%
Nzara	World Vision International	20	20	100%	20	100%
Nagero	World Vision International	10	10	100%	10	100%
Ezo	World Vision International	27	26	96%	26	96%
Abiemnhom	Cordaid	4	4	100%	4	100%
Koch	CRADA,IRC.	6	4	67%	5	83%

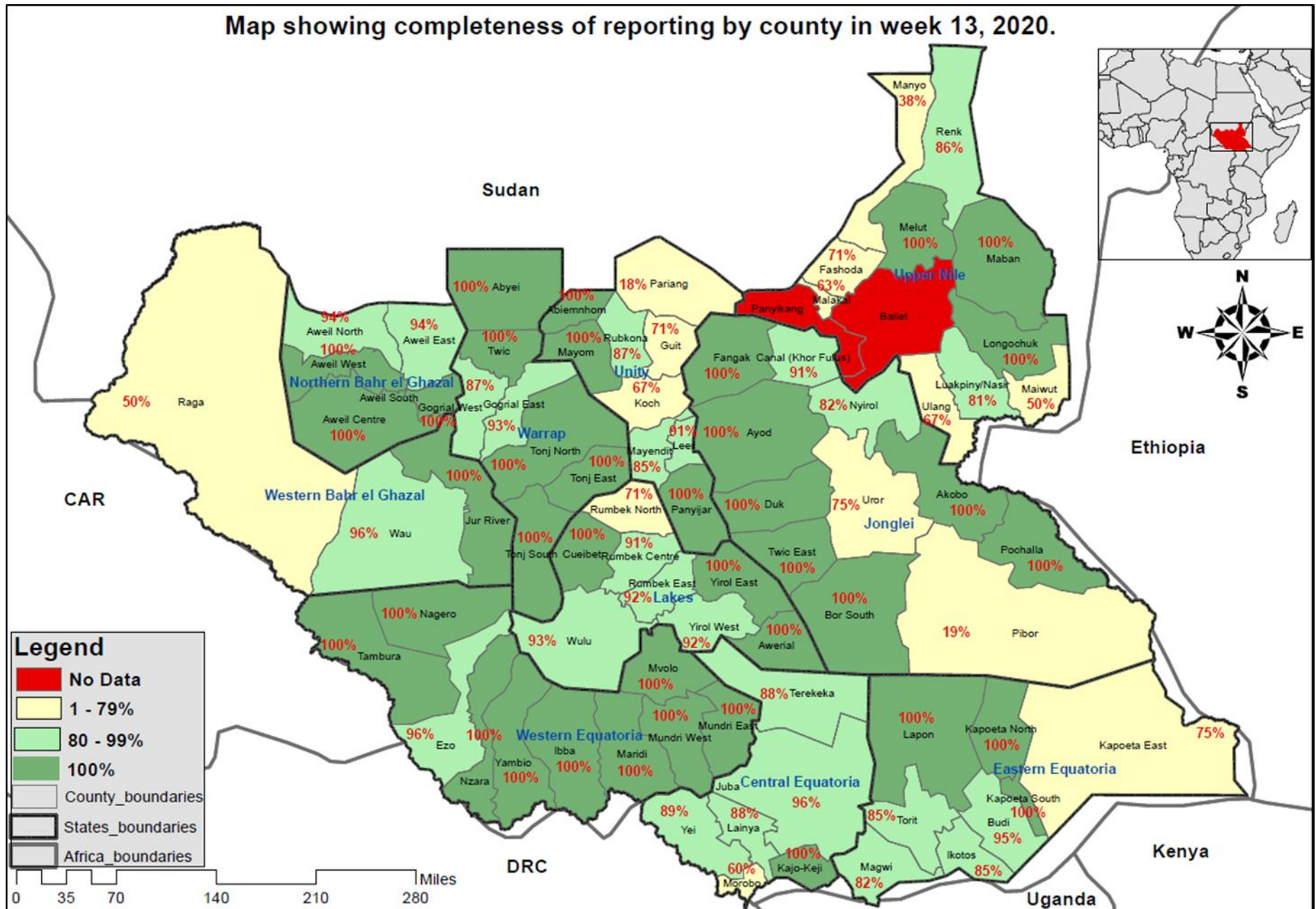
Counties	Supporting Partners	Total No. of Functional Health Facilities in the County	No. of HFs Reported on Time	Timeliness Percentage	No. of HFs Reported regardless of time	Completeness Percentage
Gogrial West	GOAL	32	25	78%	29	91%
Gogrial East	GOAL	15	14	93%	15	100%
Abyei	AAA, Save the Children, MSF	10	10	100%	10	100%
Tonj East	CCM	12	12	100%	12	100%
Tonj South	CCM	12	12	100%	12	100%
Tonj North	CCM	14	14	100%	14	100%
Twic Mayardit	GOAL	26	26	100%	26	100%
Bor	MDM + JDF	35	35	100%	35	100%
Duk	MDM + JDF	15	15	100%	15	100%
Pibor	LIVEWELL,CRADA	5	3	60%	3	60%
Akobo	NILE HOPE	8	8	100%	8	100%
Fangak	CMD,HFO	16	10	63%	16	100%
Uror	Nile Hope,Malaria Consortium	8	6	75%	7	88%
Nyirol	CMA,Malaria Consortium	11	9	82%	10	91%
Twic East	MDM + JDF	11	11	100%	11	100%
Ayod	CMD,EDA	15	11	73%	15	100%
Pochalla	LIVEWELL	9	9	100%	9	100%
Pigi Canal	IMC	11	8	73%	9	82%
Mayendit	CASS	13	11	85%	13	100%
Guit	CHADO	7	0	0%	6	86%

IDSR Timeliness and Completeness Performance at County Level for week 13, 2020 (2)

Counties	Supporting Partners	Total No. of Functional Health Facilities in the County	No. of HFs Reported on Time	Timeliness Percentage	No. of HFs Reported regardless of time	Completeness Percentage
Malakal	IMC	8	3	38%	6	75%
Akoka	IMC	5	0	0%	5	100%
Baliet	IMC	5	0	0%	0	0%
Renk	WVI + RI	13	12	92%	12	92%
Melut	WVI + RI	8	8	100%	8	100%
Manyo	CORDAID	8	3	38%	3	38%
Maiwut	RI	5	5	100%	5	100%
Fashoda	CORDAID	14	10	71%	14	100%
Ulang	UNKEA,RI	18	10	56%	13	72%
Maban	WVI + RI	16	16	100%	16	100%
Luakping Nasir	UNKEA,RI	26	21	81%	22	85%
Longechuk	RI	9	9	100%	9	100%
Panyikang	IMC	4	0	0%	0	0%
Aweil West	HealthNetTPO	37	32	86%	37	100%
Aweil East	IRC,TADO	36	29	81%	34	94%
Aweil Center	Malaria Consortium(MC)	15	0	0%	15	100%
Aweil South	Malaria Consortium(MC),IHO	9	9	100%	9	100%
Aweil North	HealthNetTPO,IHO	33	31	94%	31	94%
Pariang	CARE International	11	2	18%	3	27%
Panyijjar	IRC	15	15	100%	15	100%

Counties	Supporting Partners	Total No. of Functional Health Facilities in the County	No. of HFs Reported on Time	Timeliness Percentage	No. of HFs Reported regardless of time	Completeness Percentage
Juba	HLSS	42	42	100%	42	100%
Kajo-Keji	SSUHA,GOAL,TRI-SS	16	16	100%	16	100%
Yei	SSUHA	20	15	75%	17	85%
Lainya	SSUHA	16	14	88%	14	88%
Morobo	SSUHA,THESO	5	3	60%	5	100%
Terekeka	HealthNetTPO	25	21	84%	21	84%
Torit	Cordaid	20	16	80%	16	80%
Lopa Lafon	HLSS	18	17	94%	18	100%
Ikotos	HLSS	27	21	78%	27	100%
Magwi	HLSS	22	18	82%	19	86%
Budi	Cordaid	21	17	81%	20	95%
Kapoeta South	CCM	10	10	100%	10	100%
Kapoeta East	CCM	12	8	67%	12	100%
Kapoeta North	CCM	16	16	100%	16	100%
Wau	Cordaid	28	25	89%	28	100%
Raja	HealthNetTPO	14	1	7%	7	50%
Jur River	Cordaid	35	30	86%	35	100%
Rubkona	Cordaid,IRC,IOM,MSF	15	12	80%	15	100%
Mayom	CASS	9	9	100%	9	100%
Leer	UNIDOR	11	10	91%	10	91%

Map showing completeness of reporting by county in week 13, 2020.



Disclaimer: The boundaries and names shown and the designations used on this map do not imply the expression of any opinion whatsoever on the part of the World Health Organization concerning the legal status of any country, territory, city or area or of its authorities, or concerning the delimitation of its frontiers or boundaries.

Surveillance | EWARS surveillance performance indicators by partner week 13, 2020

Partner	Performance		Reporting	
	# of sites	# of reports received	Completeness	Timeliness
CMD	1	1	100%	100%
GOAL	2	2	100%	100%
HAA	4	4	100%	100%
HLSS	1	1	100%	100%
HFO	3	3	100%	100%
IMA	9	9	100%	100%
IMC	5	5	100%	100%
MDM	10	10	100%	100%
SMC	6	6	100%	100%
IOM	13	13	100%	100%
IRC	1	1	100%	100%
LIVEWELL	4	4	100%	100%
MEDAIR	2	2	100%	100%
MSF-E	6	6	100%	100%
MSF-H	5	5	100%	100%
RHS	3	1	33%	33%
TADO	5	0	0%	0%
TRI-SS	2	2	100%	100%
UNH	3	0	0%	0%
UNIDOR	2	2	100%	100%
WORLD RELIEF	2	2	100%	100%
TOTAL	89	79	89%	89%

- Both completeness and timeliness were 89% for weekly reporting in week 13, 2020 for partner-supported clinics serving IDP sites. |

EVENT-BASED SURVEILLANCE

Alert management including detection;
reporting; verification; risk assessment; & risk
characterization

Alert by disease and Hubs in Week 13, 2020 [A total of 143 event specific alerts generated by Hubs]

States	AJS	ARI	Acute Watery Diarrhoea	Bloody Diarrhoea	AFP	Malaria	Measles	Total Alerts
Jonglei								0
Warrap	1		6	11	1	3		22
EES		3	4	5	1	4	1	18
Unity	1	1	1	2			1	6
WES	1	15	10			23	1	50
CES		2					1	3
NBG		4	1	3		3	3	14
Lakes								0
WBG		3	4			5	2	14
UNS		3	3	8		1	1	16
Total Grand	3	31	29	29	2	39	10	143

During this week:

3 AJS alert: 1 undergoing verification & 1 under Monitoring

31 ARI: 18 are undergoing verification, 13 been monitored

29 AWD alert: 14 undergoing verification, 15 been monitored

29 ABD: 12 undergoing verification, 17 been monitored.

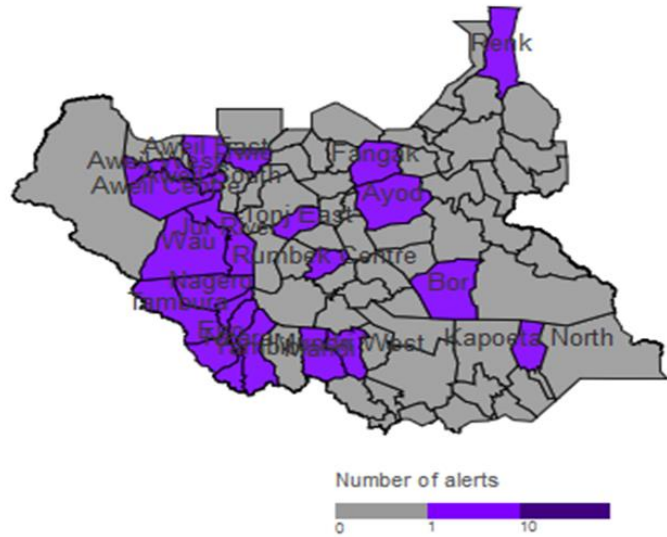
39 Malaria alerts: 12 undergoing verification, 27 under monitoring

10 Measles alert: 4 undergoing verification and 6 under monitoring

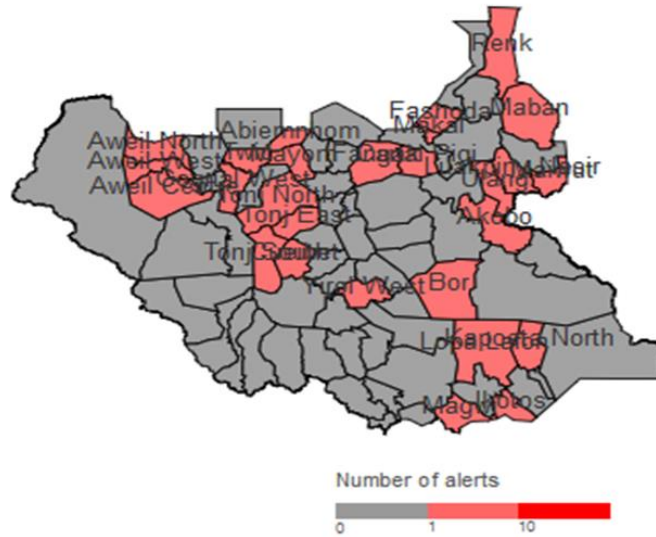
2 AFP alert: Under Monitoring

Alert | Map of key disease alerts by county week 13, 2020

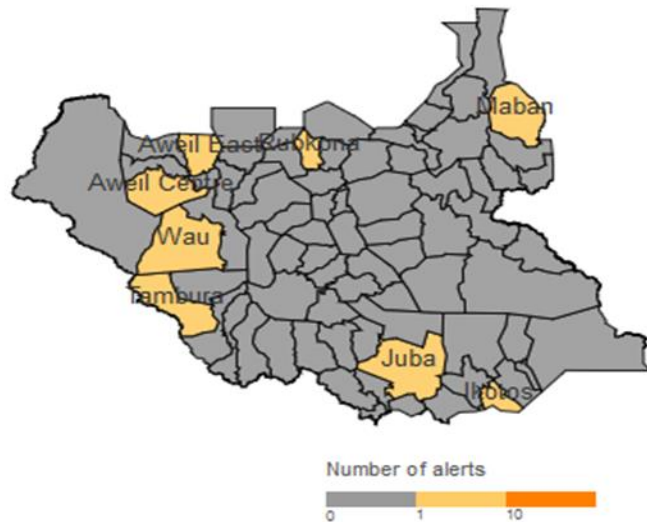
Map 2a | Malaria (W13 2020)



Map 2b | Bloody diarrhoea (W13 2020)



Map 2c | Measles (W13 2020)

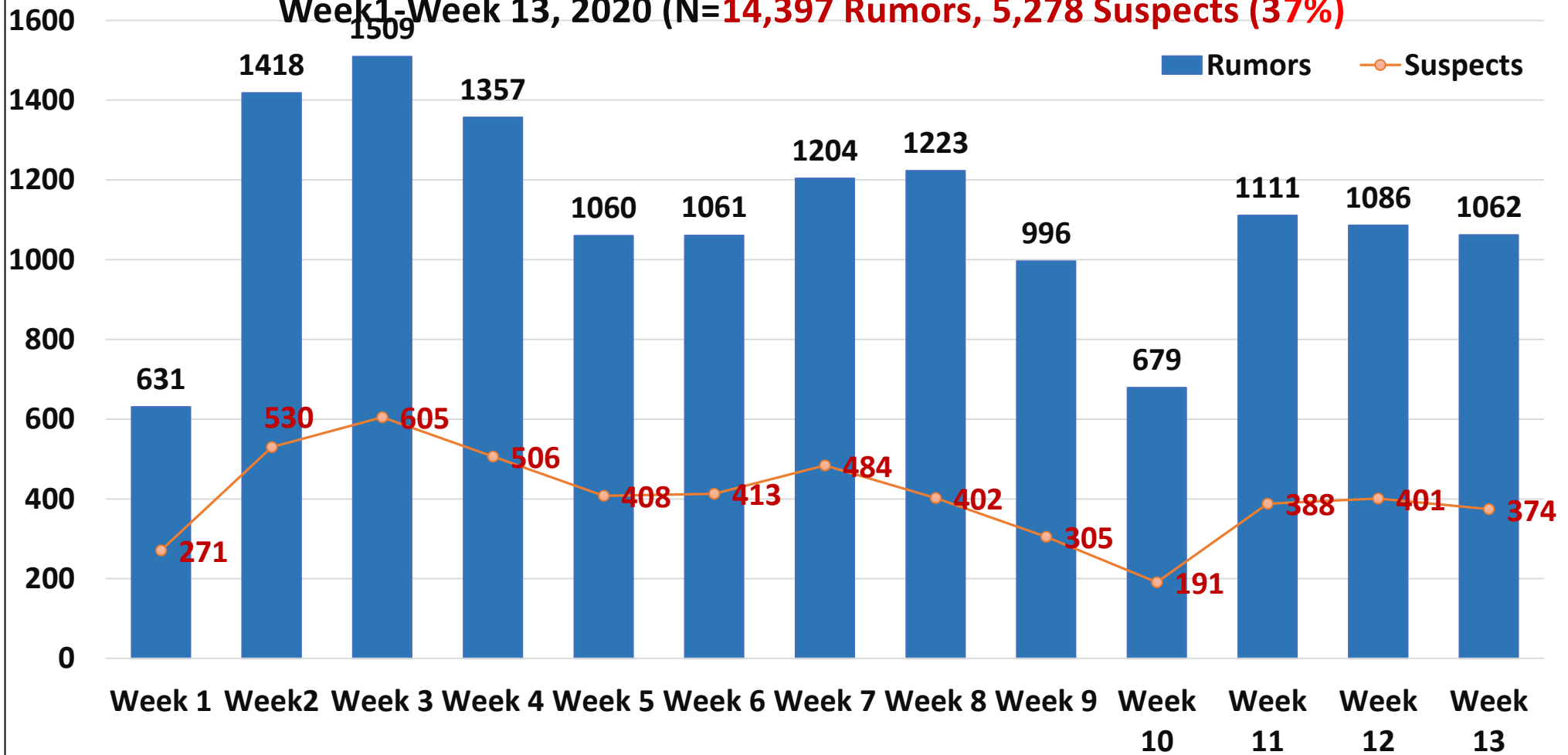


W13	Cumulative (2020)	
0	1	Low risk
1	1	Medium risk
0	21	High risk
0	38	Very high risk

72%	70%	% verified
0%	0%	% auto-discarded
0%	2%	% risk assessed
0%	2%	% requiring a response

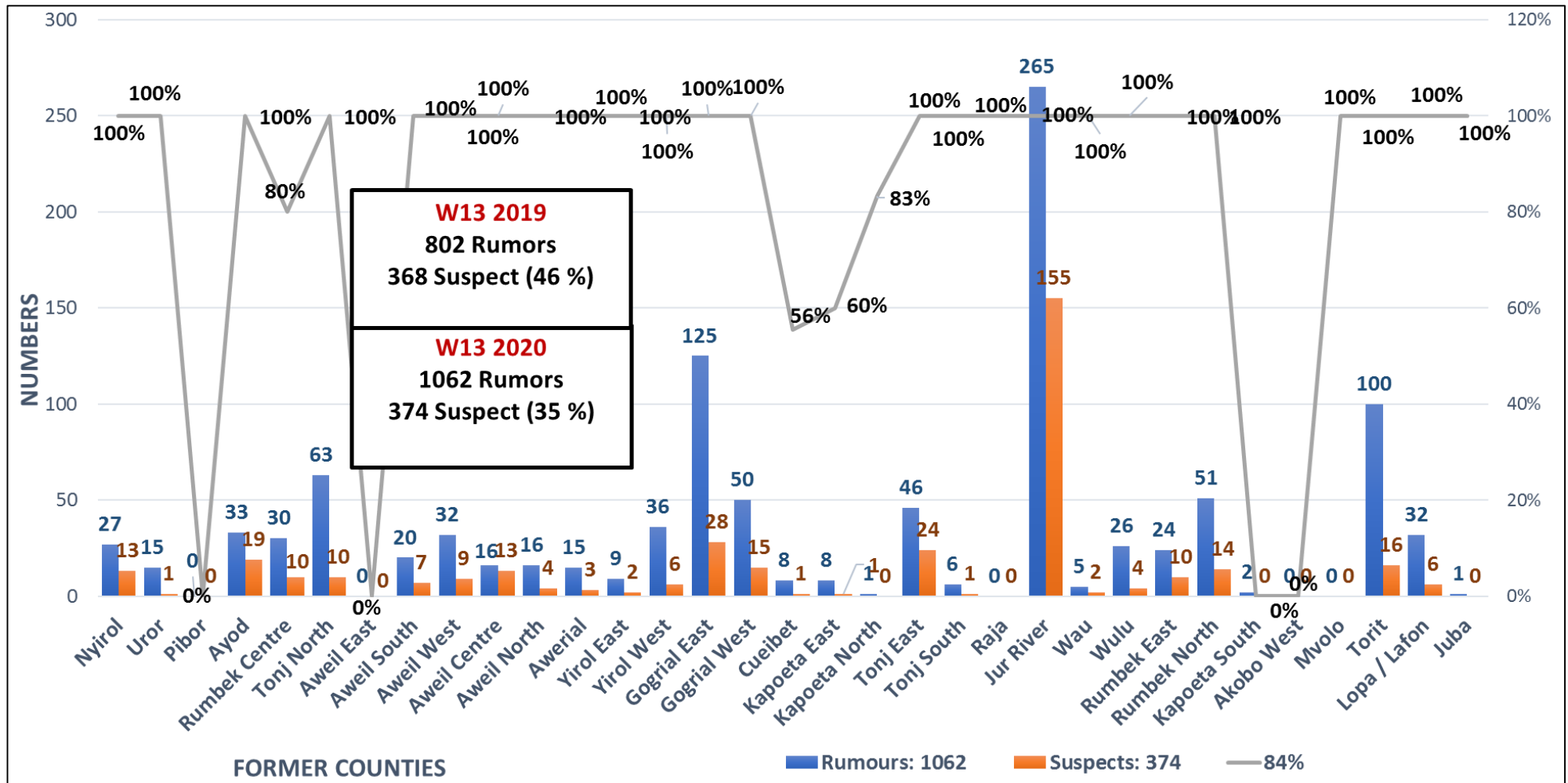
CUMULATIVE: Guinea Worm Rumors and Suspects

Week 1-Week 13, 2020 (N=14,397 Rumors, 5,278 Suspects (37%))



There is a slight decrease in the Number of Rumors and increase in Suspects reported in Week 12 Compared to Week 11

Former Counties that reported Rumors, and Suspects during 22nd – 28th March 2020 (13th Week) (n=32)



The Reporting Rate for Week 13 Stands at 84%

SUSPECTED OUTBREAKS IN 2019

Major suspected outbreaks in South Sudan in
2020

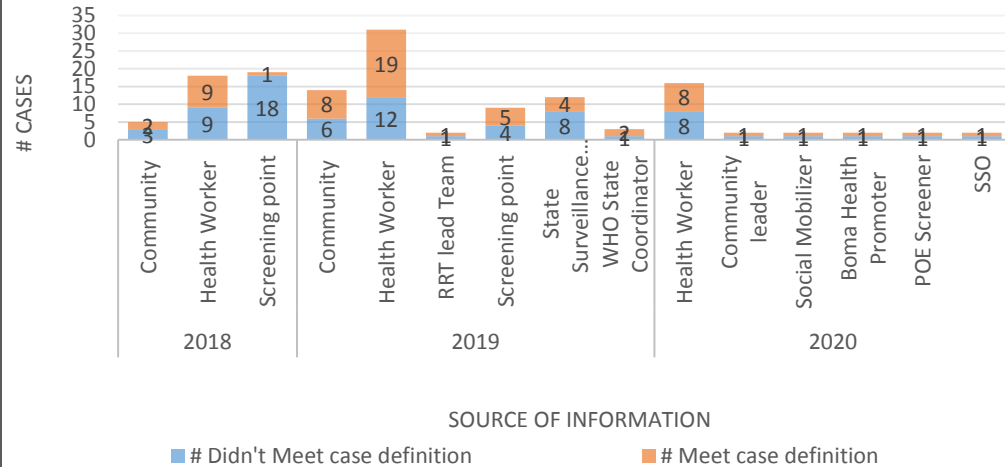
EVD Suspect cases in South Sudan 2018 and 2019 as of week 11, 2020

Met EVD cases definition			
2018	30	12	42
Community	3	2	5
Health Worker	9	9	18
Screening point	18	1	19
2019	32	39	71
Community	6	8	14
Health Worker	12	19	31
RRT lead Team	1	1	2
Screening point	4	5	9
State Surveillance Officer	8	4	12
WHO State Coordinator	1	2	3
2020	13	13	26
Health Worker	8	8	16
Community leader	1	1	2
Social Mobilizer	1	1	2
Boma Health Promoter	1	1	2
POE Screener	1	1	2
SSO	1	1	2
Grand Total	75	64	139

- Since August 2018, at least 139 suspect EVD cases have been reported, of which:
- 26 (18.7%) have been reported in 2020
- Most of the suspect EVD cases have been reported by health workers at health facility level
- One alert was reported in week 11, 2020

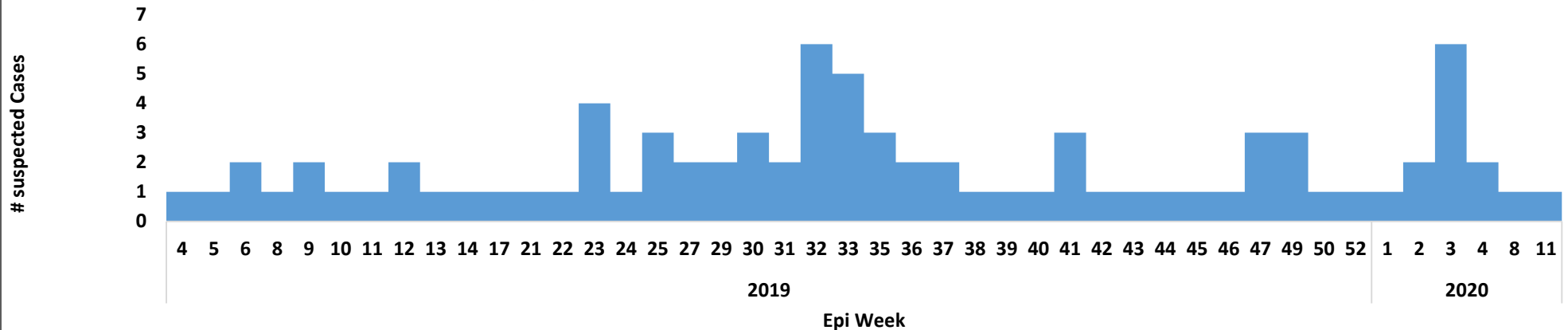
EVD Suspect cases in South Sudan 2018, 2019 and 2020 as of week 11, 2020

NUMBER OF CASES THAT MET AND DID NOT MEET EVD CASE DEFINITION FROM 2018 TO 2020 BY SOURCE OF INFORMATION



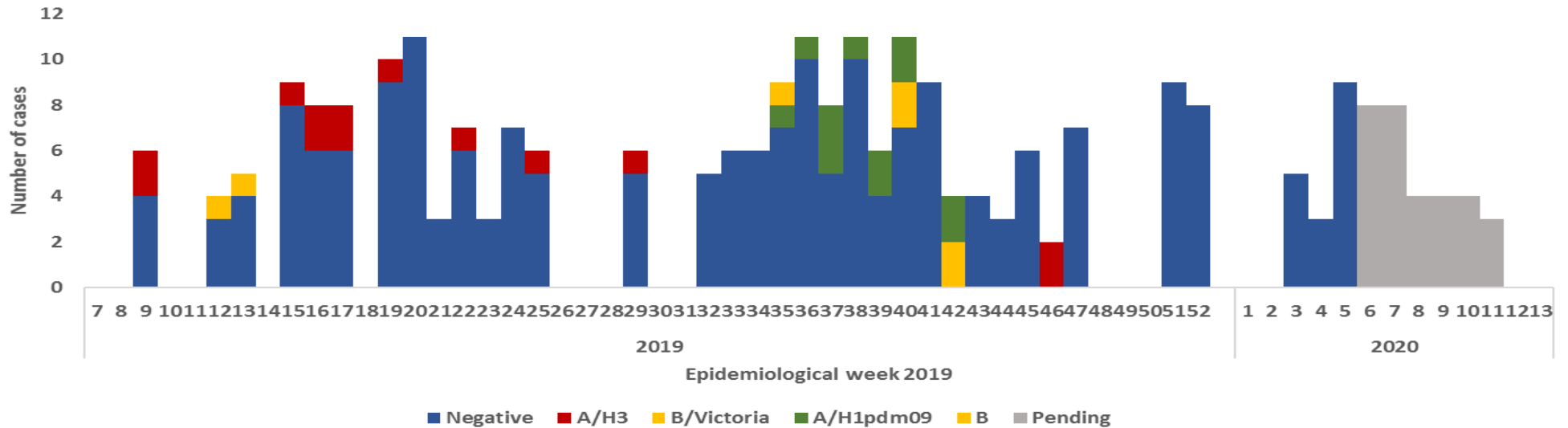
- Most of the suspect EVD cases have been reported in adults 18 years and above (72%)
- Similarly, most suspect EVD cases have been reported in males (56%)
- The distribution suspect EVD cases in both children <18years and adults ≥18yrs is skewed towards the males

EVD suspected cases by epi week and EVD cases definition (CD), South Sudan - 2019 and 2020.



Routine Sentinel Surveillance | Human Influenza

Influenza isolates from sentinel sites in Juba, week 7, 2019 - week 13, 2020.



- In week 7, 2019, South Sudan started case-based surveillance for Influenza Like Illness (ILI) and Severe Acute Respiratory Infection (SARI) cases through systematic collection of epidemiological and virological information
- There are currently two designated Influenza sentinel surveillance sites in Juba (Juba Teaching Hospital and Al Sabah Children’s Hospital) that are collecting epidemiological data and samples from ILI/SARI cases
- Since week 7 of 2019, a total of 299 ILI/SARI samples have been collected and tested in UVRI 228 being negative; 6 (3%) positive for Influenza B (Victoria); 13(7%) positive for Influenza A (H3); and 12(6%) positive for Influenza A (H1)pdm09 and (20) samples are pending test results .
- Since the beginning of 2019; Influenza A (H3) has been the predominant isolate. However, Influenza A (H1)pdm09 emerged from week 35 as a new circulating strain.

Response | Suspect epidemics; Current Malaria trends 13, 2020

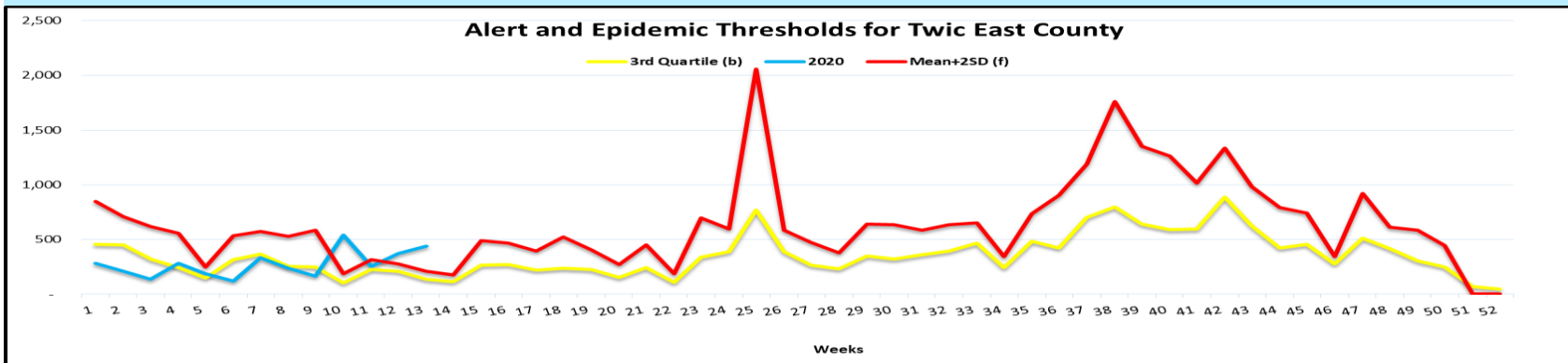
Malaria was the leading cause of morbidity and mortality, accounting for **46.6%** of all morbidities and **22.4%** of all mortalities in week 09, 2020

There is 3 County with malaria trends that exceeded the threshold (third quartile of trends for the period 2013-2017) and these include the following:

1. Bor hub (Twic East ,Uror)
2. Malakal hub (Melut)

Proposed public health actions:

1. Malaria taskforce of malaria technical working group meeting to ensure that operational readiness for malaria prevention, diagnosis, and treatment are optimized.
2. Field missions to conduct technical verification of the trends in the affected counties
3. Assessment of current stock levels of malaria diagnostics (RDTs), medicines (ACTs), and LLINs.
4. Stocking up on malaria prevention (LLINs), diagnostics (RDTs), medicines (ACTs), and enhancing behavioral change communication for malaria prevention, prompt investigation and treatment



ACTIVE OUTBREAKS AND PUBLIC HEALTH EVENTS

Brief epidemiological description and public health response for active outbreaks and public health events

Aetiological agent	Location (county)	Date first reported	New cases since last bulletin	Cumulative cases to date (attack rate %)	Interventions				
					Case management	Vaccination	Health promotion	WASH	
Ongoing epidemics									
Hepatitis E	Bentiu PoC	03/01/2018	1	245 (0.004)	Yes	No	Yes	Yes	
Measles	Bentiu PoC	24/04/2019	7	415 (0.016)	Yes	Yes	Yes	Yes	N/A
Measles	Aweil East	29/12/2019	NR	205(0.04)	Yes	Yes	Yes	Yes	N/A
Rubella	Rumbek East	17/9/2019	NR	23 (0.35)	yes	No	Yes	Yes	N/A

● Measles outbreaks confirmed in 2020

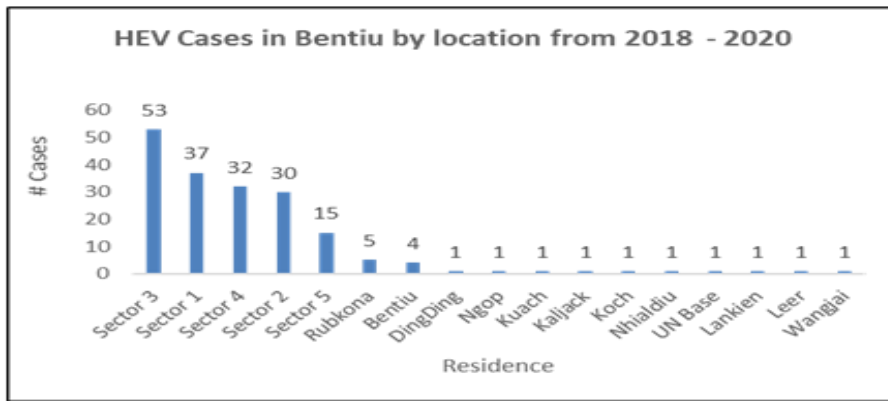
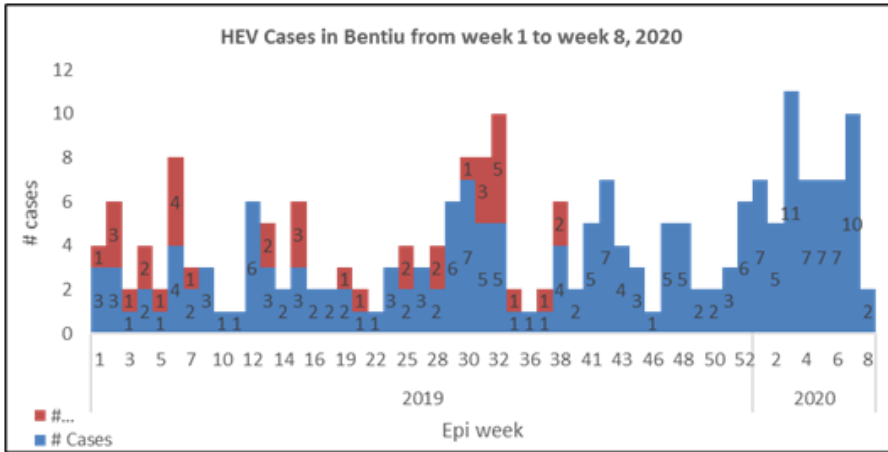
- **5 counties** – Tonj East, Magwi, Bor, Kapoeta East and Tonj South.
- **Locations with ongoing measles transmission**
- **Aweil East**
- **Bentiu PoC**



Measles Outbreak situation & response by county as of week 14, 2020

S/N	County	Population	Confirmed cases	Probable cases	Total cases	Cases per 100,000	Total deaths	CFR %	Date first reported	Emergency Campaign	Admin Coverage	Implementing Partner	Status	Comments
1	Tonj East	183,233	13	48	61	33.3	0	0	12-Dec-19	Mass Campaign	Pending result	Mass Campaign	controlled	Mass Campaign Completed
2	Magwi	272,880	5	5	10	3.7	0	0	19-Sep-19	Mass Campaign	Pending result	Mass Campaign	controlled	Mass Campaign Completed
3	Bor	320,956	7	7	14	4.36	0	0	17-Jan-19	Mass Campaign	115.60%	Mass Campaign	controlled	Mass Campaign Completed
4	Kapoeat East	262,720	6	10	16	6.1	0	0	18-Jan-20	Reactive Campaign (Jebel Boma)	Reactive Campaign to start on 26 Feb 2020	IRC	active	Reactive Campaign completed in March 2020
5	Awiel East	519,537	10	195	205	39.4	0	0	2-Jan-20				active	
6	Bentiu Poc	115,479			96	83	2	2	1 Jan 2019	Reactive campaign	126%	IOM	Active	Reactive campaign 20 Jan 2020
Total		1,155,268	41	265	402	34.8	2	0.5						

Confirmed Measles Outbreak in Aweil East County



Age Group	Cases	Percentage	Cum.%
0 - 4 Years	108	53%	53%
15 + Years	50	24%	77%
10 - 14 Years	25	12%	89%
5 - 9 Years	22	11%	100%
Grand Total	205	100%	

Descriptive Epidemiology:

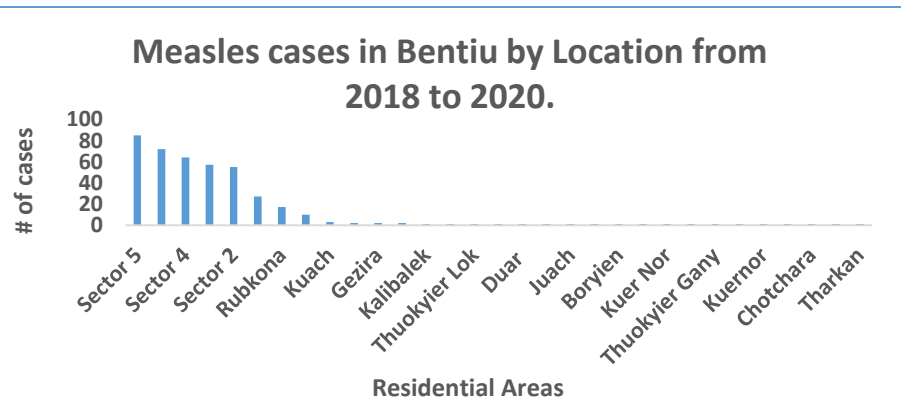
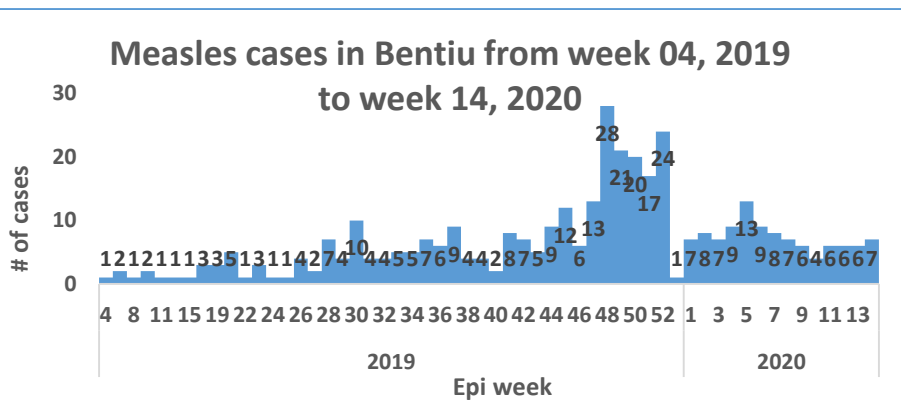
- Initial cases were reported on 2nd Jan, 2020
- A total of 205 suspected measles cases have been line listed in Aweil East county
- Majority of the cases were from Baac and Madhol payams
- 12 new cases were reported in week 09, 2020
- (108) 53% of the cases are less than 5 years of age
- Male were 59% of cases and female were 41%

Response and Recommendations

- Reactive campaign was finalized in Aweil East on 24th January, 2020 by SMOH and IOM, coverage was 119% and PCE coverage was 91.5%. Plans is ongoing for second reactive campaign.
- Majority of the cases reported this week were from Baac payam with administrative coverage of 73% which is not sufficient to interrupt transmission.
- Total of 21 samples were; 10 tested measles IgM +ve and 2 rubella IgM positive.
- Surveillance and line-listing are ongoing
- Case management is ongoing

Response | Confirmed epidemics

Confirmed Measles and Rubella outbreak in Bentiu PoC



Age Group	Cases	Percentage	Cum. %
0 - 4 Years	394	95%	95%
5 - 9 Years	12	3%	98%
10 - 14 Years	6	1%	99%
15+ Years	3	1%	100%
Grand Total	415	100%	

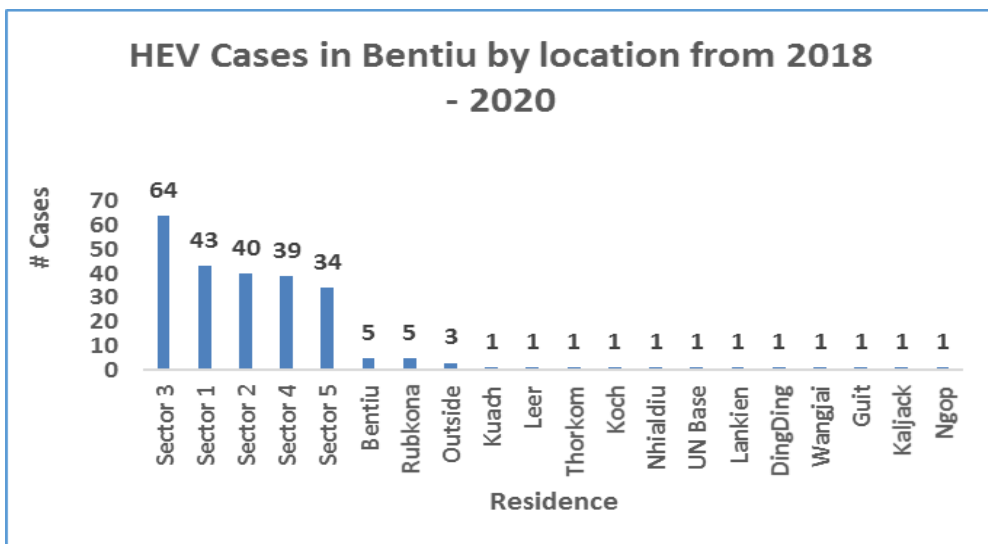
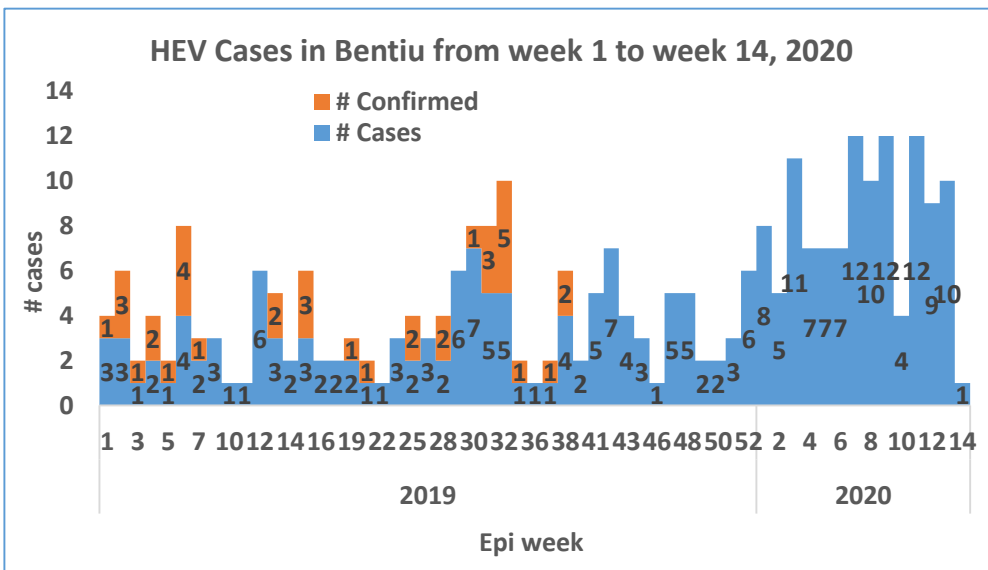
Epidemiological description

- Bentiu PoC has been reporting suspected measles/rubella cases since week 4 of 2019.
- 07 new cases reported in week 14, 2020
- At least 415 measles cases including 1 death (CFR 0.3%) reported since then.
- Cumulatively, 36 tested cases have tested measles IgM positive while 15 tested rubella IgM positive.
- 47% of cases are female and 53% are male
- 95% are under 5 yrs old, 5% are 5 yrs old and above
- Cases have been reported from inside and outside the PoC with most of the cases originating from the PoC (most cases from sector 5 but generally all the sectors are affected).

Response actions

- Several rounds of reactive campaigns were conducted in Bentiu IOM:
 - IOM completed a reactive campaign in Bentiu POC on 31 May 2019, with 21,285 children 6-59 months and coverage of 126% receiving measles vaccination. PCE was done by MoH & WHO, coverage was 74.6%.
 - Another campaign was conducted by SMOH, IOM and partners which was completed during the week of 20th January 2020 with coverage of 126%.
 - Partners advised to collect samples from suspect cases.

Hepatitis E, Bentiu PoC (1)



Descriptive epidemiology

- The persistent transmission of HEV in Bentiu PoC continues with 245 cases since beginning of 2019
- There was (01) new cases reported in week 14, 2020
- All the cases were managed as outpatient cases except for seven cases who were admitted
- Two deaths one on 12th, April 2019 and the second on 11th July 2019
- 51% are female and 49% are male.
- Age group less than 15 years had the most cases with (76%) cases.
- At risk of adverse outcomes when infected in the 3rd trimester of pregnancy
- Use of unsafe drinking water likely to be source of infection
- Up to week 14, 2020; there were 46 cases of HEV in Bentiu PoC including 2 deaths (CFR 0.27%)

Age-Group	Alive	Dead	Grand Total	Percentage	CFR	Cum. %2
1 - 4 Years	80		80	33%	0%	33%
10 - 14 Years	41		41	17%	0%	49%
15+ Years	58	2	60	24%	3%	74%
5 - 9 Years	63	1	64	26%	2%	100%
Grand Total	242	3	245	100%	0.01	

Recommendations

- Supportive case management guided by the HEV protocol is ongoing
- KEV messages on HEV prevention should continue within the community through HPs, CHWs and Kondial Radio
- With current COVID -19 Pandemic Outbreak, WASH partners to increase the coverage of hand washing facilities within the PoCs community.
- Other Wash intervention like increasing the access for clean water and improving the water storage in the affected individuals should be made urgently by distributing the water storage containers that will be the only way to mitigate this problem and stop the HEV outbreak.
- The WASH Cluster/HEV task force should engage in group discussion with Community leaders and woman group at water distribution points to understand their opinions on issue of Collapsing Jerrycans distribution.
- Monitoring the FRC levels at the taps stands in the different sectors, and the concentration of chlorination should maintain at 0.5-1mg/L as the point of collection

Response | Summary of major controlled outbreaks in 2019 and 2020

Aetiological agent	Location (county)	Date first reported	New cases since last bulletin	Cumulative cases to date (attack rate %)	Interventions			
					Case management	Vaccination	Health promotion	WASH
Controlled epidemics								
Measles	Juba	21/11/2019	NR	6(0.1667)	Yes	No	Yes	N/A
Measles	Tonj East	12/12/2019	6	61(0.98)	yes	Yes	Yes	N/A
Measles	Bor	17/01/2020	3	14(0.214)	yes	No	yes	N/A
Measles	Jebel Boma	10/12/2019	NR	96(0.063)	yes	No	Yes	N/A
Measles	Kapoeta East	18/01/2020	NR	16(0.625)	yes	No	Yes	N/A

EBOLA VIRUS DISEASE[EVD] PREPAREDNESS IN SOUTH SUDAN

Brief on the Ebola situation in DR Congo and updates on EVD preparedness in South Sudan

Ebola update DRC 14 April 2020

Current situation

- Currently as of 12 April 2020
- 3457 Cases [3310 confirmed & 143 probable]
- 2277 Deaths [2183 confirmed & 94 probable]

Response update

- Two new confirmed cases of Ebola virus disease (EVD) were reported in Beni Health Zone on 10 and 12 April.
- A total of 213 contacts of these cases have been registered, 116 of whom were followed on 12 April 2020, and 90 were vaccinated.

Affected health zones

- As of 12 April 2020, a total of 3457 EVD cases were reported from 29 health zones, including 3312 confirmed and 145 probable cases, of which 2277 cases died (overall case fatality ratio 66%)

Novel Coronavirus

Novel Corona Virus Situation Summary

- Situation update as of 18th April, 2020

SITUATION IN NUMBERS

total (new cases in last 24 hours)

Globally

2 160 207 confirmed (85 678)
146 088 deaths (6710)

European Region

1 086 889 confirmed (36 018)
97 201 deaths (3721)

Region of the Americas

784 272 confirmed (40 665)
35 742 deaths (2714)

Western Pacific Region

129 256 confirmed (1661)
5598 deaths (40)

Eastern Mediterranean Region

120 683 confirmed (4859)
5784 deaths (122)

South-East Asia Region

25 291 confirmed (1731)
1134 deaths (83)

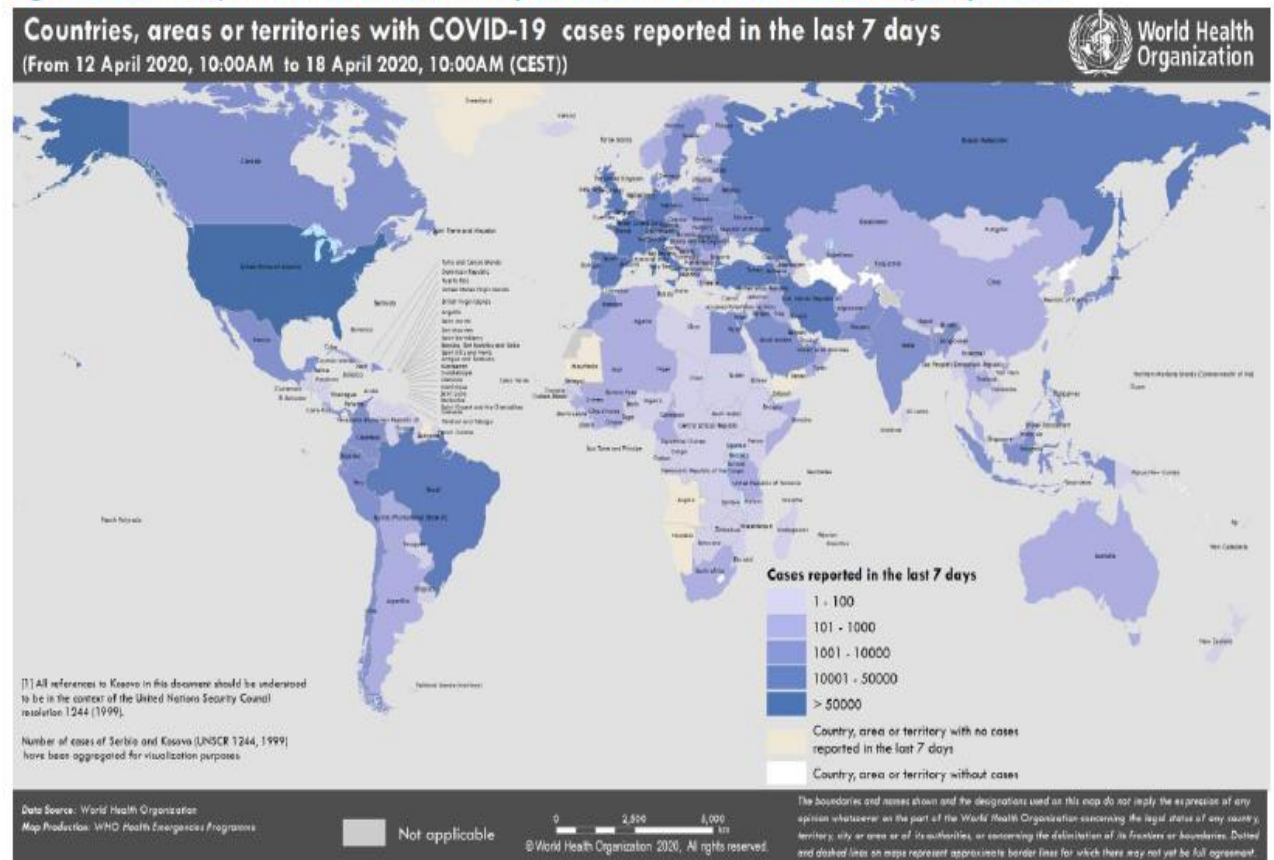
African Region

13 104 confirmed (744)
616 deaths (30)

WHO RISK ASSESSMENT

Global Level Very High

Figure 1. Countries, territories or areas with reported confirmed cases of COVID-19, 18 April 2020



WHO: <https://www.who.int/health-topics/coronavirus>

COVID-19 Preparedness in South Sudan

- Total of 16 alerts were investigated and all tested negative for COVID-19
- The national and high-level COVID-19 taskforce committees are coordinating current response
- The national COVID-19 preparedness plan costed at \$10.8 million is approved & passed for implementation
- Implementation of priorities; risk communication; active case search and testing; quarantine for contacts; infection prevention and control; and management of cases are currently underway

Overall Conclusions and Recommendations for week 10, 2020

Conclusion

- The overall IDSR and EWARNS reporting performance in week 13, surpasses the target of 80%. All 10 states were above 80%
- With five outbreaks confirmed in 2020; measles remains the most frequent vaccine preventable disease
- No new outbreaks of measles was reported
- Given the COVID-19 pandemic, it is critical that measures are stepped up to detect, test, and isolate cases, quarantine contacts and communicate COVID-19 risk and prevention

Recommendations

- All partners should support CHDs & HF in Upper Nile and other states to improve IDSR/EWARN reporting
- All partners should support Government to optimize the implementation of the measles control strategy
 - Initiate response to contain measles transmission in Aweil East & Bentiu PoC
- Strengthen national capacities for COVID-19 preparedness and response readiness

Thanks to the State Surveillance Officers, County Surveillance Officers and Health Facility in-charges for sharing the weekly IDSR data

Thanks to all partners for supporting IDSR weekly reporting and sharing the line lists

To access the IDSR bulletins for 2020 use the link below:

<https://www.afro.who.int/publications/south-sudan-weekly-disease-surveillance-bulletin-2020>

This bulletin is produced by the Ministry of Health with Technical support from WHO

For more help and support, please contact:

Dr. Pinyi Nyimol Mawien

Director General Preventive Health Services
Ministry of Health
Republic of South Sudan
Telephone: +211916285676

Mr. Mathew Tut M. Kol

Director, Emergency Preparedness and Response
Ministry of Health, RSS
Tell: +211916010382, +211922202028
Emails: tut1988@yahoo.com, greensouth2020@gmail.com
Skype: mathew19885

IDSR Bulletin Editorial Team

1. Mr. Ajak Ater, MoH - Email: ajakater014@gmail.com
2. Ms. Sheila Baya, WHO- Email: bayas@who.int
3. Mr. Robert Lasu Martin, WHO -Email: lasur@who.int
4. Mrs. Rose Dagama , WHO - Email: dagamaa@who.int
5. Dr. Abraham Adut, WHO- Email: abenegoa@who.int
6. Dr. Alice Igale Lado, WHO - Email: ladua@who.int
7. Dr. Joseph Wamala, WHO - Email: wamalaj@who.int
8. Dr. Argata Guracha Guyo, WHO - Email: guyo@who.int

Notes

WHO and the Ministry of Health gratefully acknowledge the surveillance officers [at state, county, and health facility levels], health cluster and health pooled fund (HPF) partners who have reported the data used in this bulletin. We would also like to thank ECHO and USAID for providing financial support.

The data has been collected with support from the EWARS project. This is an initiative to strengthen early warning, alert and response in emergencies. It includes an online, desktop and mobile application that can be rapidly configured and deployed in the field. It is designed with frontline users in mind, and built to work in difficult and remote operating environments. This bulletin has been automatically published from the EWARS application.

More information can be found at <http://ewars-project.org>

