

Corona Virus Disease (COVID-19) Situational Report

Report No.75 Date of Issue 13th June, 2020, 3pm GMT

HIGHLIGHTS

- As 12th June 2020, there were **1,132** confirmed COVID-19 cases, **51 deaths** and **670 recoveries** in Sierra Leone
- Twenty-nine** COVID-19 cases and **22 recoveries** were reported in the last 24 hours
- 59.2%** of all reported COVID-19 cases have **recovered**.
- The new cases are from **Western Area Urban (24)**, **Western Area Rural (4)** and **Port Loko (1)** districts.
- In the last 24 hours, **172** COVID-19 tests were conducted in **three** laboratories. Positivity rate was **16.9%**.
- 122 (10.8%)** COVID-19 cases are among **health workers**
- Case Fatality Rate (CFR) is **4.5%**

New	Confirmed	29
	Recoveries	22
	Deaths	0
Cumulative	Confirmed	1132
	Recoveries	670
	Deaths	51
Case Fatality Rate (%)		4.5%

Summary of COVID-19 Cases in Sierra Leone as at 13th June 2020

District	Confirmed Cases			Deaths		
	New Confirmed Cases	Cumulative Confirmed Cases	Proportion of Total Cases	New Deaths	Cumulative Deaths	Days Since Last Confirmed Case
Western Area Urban	24	667	58.9%	1	39	0
Western Area Rural	4	147	13.0%	0	1	0
Port Loko	1	22	1.9%	0	0	0
Kenema	0	84	7.4%	0	4	2
Tonkolili	0	17	1.5%	0	0	2
Bombali	0	19	1.7%	0	4	11
Bonthe	0	39	3.4%	0	0	3
Bo	0	54	4.8%	0	2	2
Koinadugu	0	3	0.3%	0	0	14
Falaba	0	4	0.4%	0	0	25
Kailahun	0	21	1.9%	0	0	7
Moyamba	0	14	1.2%	0	0	4
Pujehun	0	7	0.6%	0	0	10
Kono	0	32	2.8%	0	1	1
Kambia	0	2	0.2%	0	0	8
Total	29	1132	100.0%	1	51	-



Government of Sierra Leone

Sierra Leone Ministry of Health and Sanitation



Government of Sierra Leone

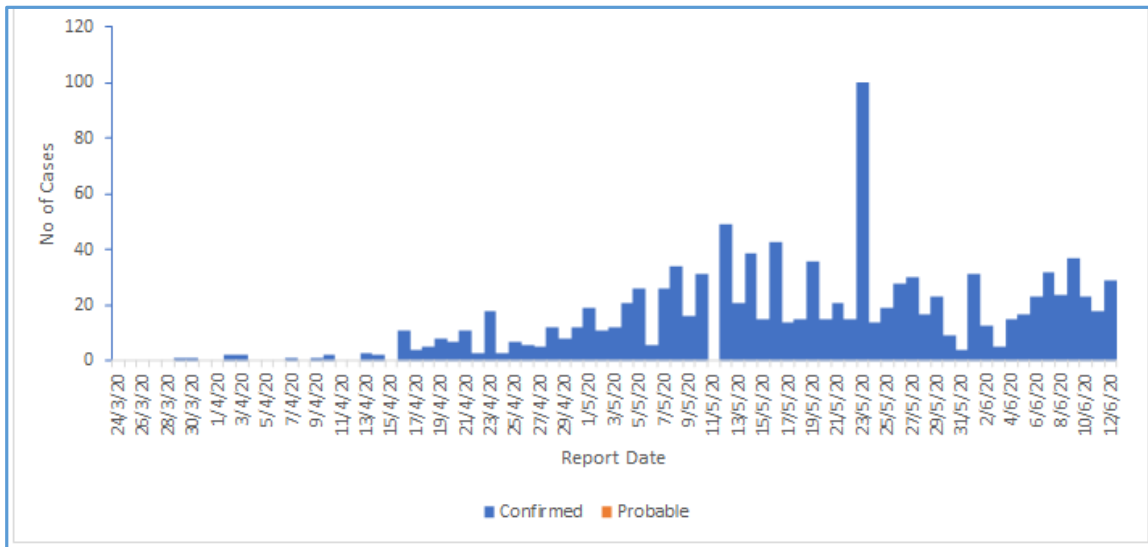


Figure 1: Reported COVID-19 Cases as at 13th June 2020

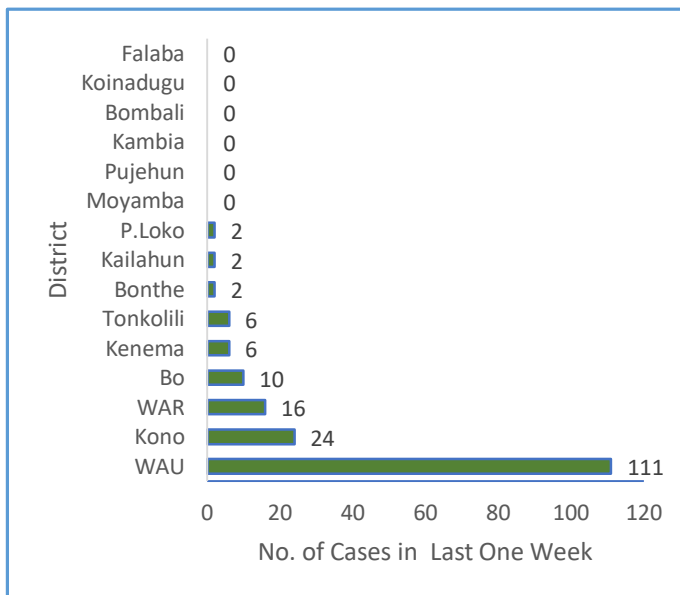


Figure 2: COVID-19 Cases Reported in the Last Seven Days

- This is the **11th week** since the first COVID-19 case was confirmed in Sierra Leone
 - **Western Area Urban** is the epi-centre of the outbreak with **667 (58.9%)** cases reported in this district
 - There is an increase in the proportion of cases reported in the rural districts
- Cases reported over last 7 Days**
- **One hundred and seventy-nine** cases have been reported in the **last 7 days**
 - **111 (62%)** cases reported over **last 7 days** are **from Western Area Urban**
 - All 18 cases reported on 12th June were epidemiologically linked to confirmed cases

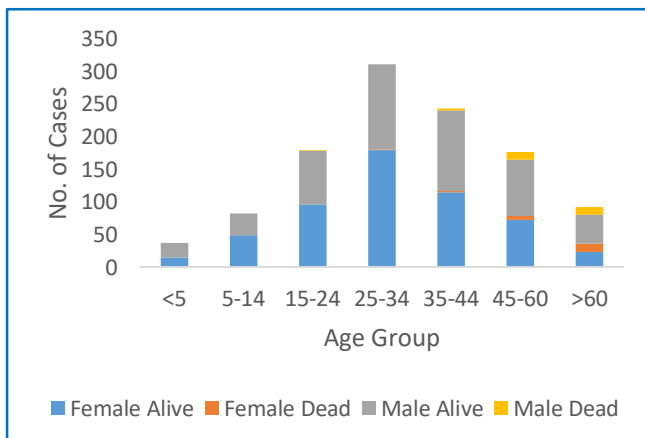


Figure 3: Age-Sex Distribution and Outcome of COVID-19 Cases

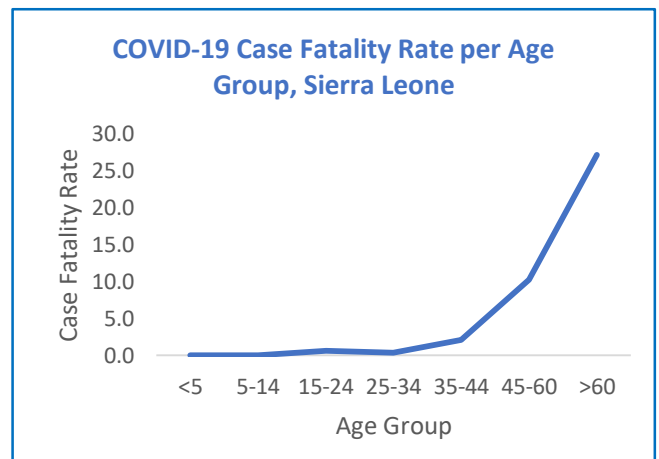


Figure 4: Age-Specific Case Fatality Rates



Government of
Sierra Leone

Sierra Leone Ministry of Health and Sanitation



Government of
Sierra Leone

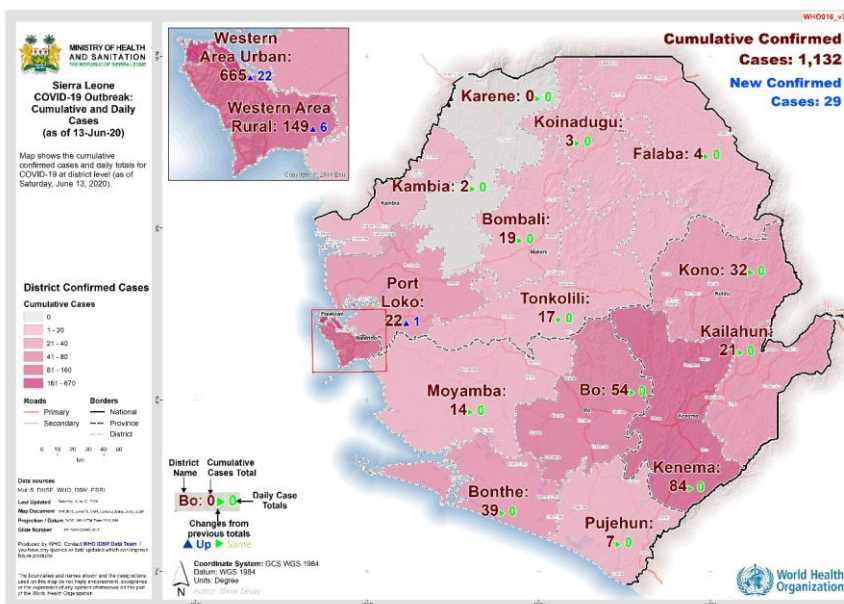
- **Median Age** of cases is **33 years** (Range 2 months - 98years)
- Five hundred and sixty-eight (**50.2%**) are **male**
- Approximately two thirds of the cases (733) are aged **15-44 years**
- There are 268 (**23.8%**) cases aged **>45 years**

COVID-19 Related Deaths

- **Mean age** of COVID-19 related deaths is **58.8 years**
- Twenty-nine (**56.9%**) out of **51** COVID-related deaths are among males
- Case fatality rate is higher among cases aged **≥ 45 years and peaks among cases aged > 60 years (CFR= 27.8%)**
- Forty-three (**86%**) deaths are among cases aged **>45 years**

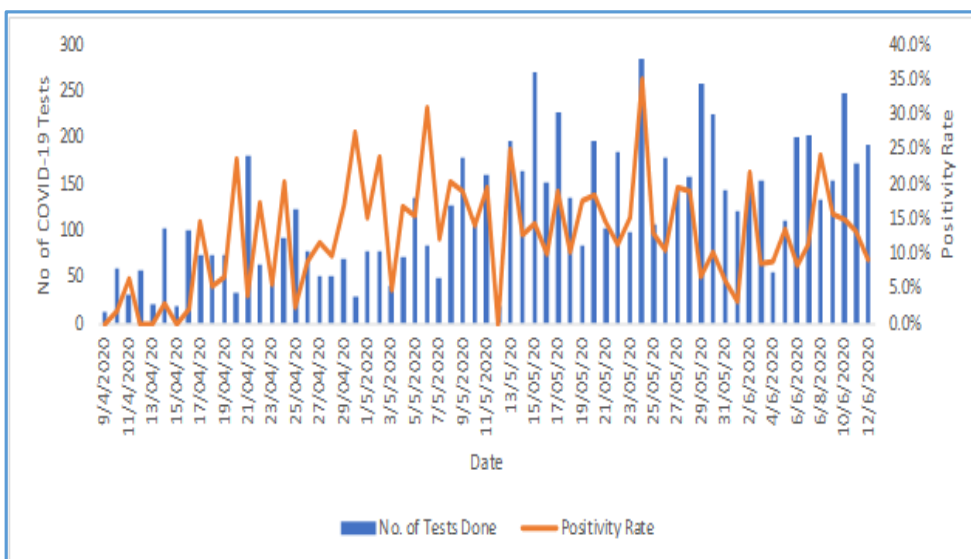
14.8

COVID-19 Cases /100,000
population



District	Total COVID-19 Cases	Population	Total COVID-19 Cases/100,000 Population
Western Area Urban	667	55.6	55.6
Western Area Rural	147	28.9	28.9
Bonthe	39	17.4	17.4
Bo	54	14.8	14.8
Kenema	84	12.5	12.5
Bombali	19	3.9	3.9
Moyamba	14	3.8	3.8
Kono	32	5.6	5.6
Kailahun	21	3.4	3.4
Port Loko	22	3.6	3.6
Tonkolili	17	3.0	3.0
Falaba	4	2.1	2.1
Pujehun	7	1.8	1.8
Koinadugu	3	1.1	1.1
Kambia	2	0.5	0.5
Karene	0	0.0	0.0
Total	1132	14.8	14.8

Figure 5: Geographical Distribution of COVID-19 Cases as at 13th June 2020



8,292

Total COVID-19 Tests

1.08

Tests/1000 population

Figure 6: Samples Tested for COVID-19 and Positivity Rate

Technical Areas	Variable	No
Contact Tracing	Cumulative No. of Contacts Listed	7,100
	Total No. of contacts currently under monitoring	1,573
	Total No. of contacts reached in the last 24 hours	1,532 (97%)
Quarantine	Total No. Currently under quarantine	1,601
	Self-Quarantine	858 (53.6%)
	Institutional Quarantine	743 (46.3%)
Laboratory Testing	Laboratory tests done in last 24 hours	172
	No of positive tests in last 24 hours (%)	29 (16.9%)
	Cumulative number of tests	8,292
Event Based Surveillance (last 24 hrs)	Total Alerts Received through 117 System	97
	No. of COVID related alerts	8
	No. of COVID related alerts investigated	8
Critical Care Patients	No of patients on a ventilator	0

PUBLIC HEALTH ACTION / RESPONSE INTERVENTIONS

COORDINATION AND LOGISTICS

- COVID-19 response is now decentralized to the subnational level
- Need to renovate the old customs building to be used as treatment centre in Kambia.

SURVEILLANCE AND LABORATORY

- 37 Lecturers from medical training institutions have been trained on revised IDSR guidelines
- Long turnaround time for results reported in Bombali thus leading to full bed occupancy in the isolation unit
- Need to enforce quarantine measures by operations and quarantine pillars to prevent quarantine breach

HAZARD CONTAINMENT (GOVERNMENT RESTRICTIONS)

- Ban on inter-district travel, mass gatherings, closure of learning institutions and travel restrictions remain in effect
- Use of cloth face mask s in public places is now mandatory

IPC and CASE MANAGEMENT

- Total COVID-19 bed capacity is 676 and bed occupancy is 248 (36.7%)
- Inadequate bed capacity and lack of a care centre are concerns in Kambia District

RISK COMMUNICATION, COMMUNITY ENGAGEMENT & SOCIAL MOBILISATION

- Denial of the existence of COVID -19 has led to some positive cases refusing to be relocated to a treatment centre

This Situation Report was developed by:

Ministry of Health and Sanitation, Sierra Leone

For any comments or inquiries contact:

eocnsr2020@gmail.com