



Ministry of Health and Social Services
Republic of Namibia

NAMIBIA COVID-19 SITUATION REPORT NO. 141			
Outbreak Name	COVID-19 outbreak	Country affected	Namibia
Date & Time of this report	06.08.2020 20:00 hrs	Investigation start Date	13 March 2020
Prepared by	Surveillance Team		

HIGHLIGHTS/SITUATION UPDATE (06/08/2020)

Total	Today
Tested 30363	Tested 711
Confirmed 2802	Confirmed 150
Active 2214	Active 2214
Recovered 572	Recovered 12
Death 16	Death 1

- The country is in Stage 4 of the State of Emergency (4 August 2020 -17 September 2020)
- Walvis Bay, Swakopmund, and Arandis Local Authority Areas in Erongo region's Stage 3 is extended (from 04 August 2020 until 23h59 of 31 August 2020).

Table 1: Distribution of confirmed COVID-19 cases by region, 06 August 2020

Region	Total No. of cases	Active cases	Recovered	Death	Health Care Workers
Erongo	2417	1920	484	13	28
Hardap	10	3	7	0	0
//Kharas	36	30	6	0	1
Kavango East	3	3	0	0	0
Kavango West	1	1	0	0	0
Khomas	265	209	53	3	19
Kunene	1	1	0	0	0
Ohangwena	13	7	6	0	0
Omaheke	2	2	0	0	0
Omusati	3	1	2	0	0
Oshana	21	13	8	0	1
Oshikoto	3	3	0	0	1
Otjozondjupa	21	17	4	0	0
Zambezi	6	4	2	0	2
Total	2802	2214	572	16	52

- All fourteen (14) regions have reported confirmed cases; with Erongo reporting the highest 2417 (86.3%) followed by Khomas 265 (9.5%).

- Omaheke region has recorded its first 2 confirmed cases today (06/08/2020).
- Today (06/08/2020), 12 recoveries have been recorded from Khomas (5), and Erongo (7) regions.
- To-date, 52 Health Care Workers have tested positive for COVID-19.
- Cumulatively, 2726 (97.3%) cases are local transmissions while 76 (2.7%) are imported.
- There is evidence of a clustered community transmission in Erongo region (Table 1)
- Up to 1698 confirmed cases in Erongo region are still to be placed in isolation facilities.
- More male cases 1657 (59.1%) were recorded compared to female cases 1145 (40.9%).

EPIDEMIOLOGICAL SITUATION IN NAMIBIA

- To date, **30363** tests have been conducted by NIP & Path-Care laboratories (including **2920** re-tests).
- Since the beginning of the outbreak, **6132** contacts of confirmed cases have been identified, **222** new contacts were identified within the last 24 hours.
- Cumulatively, **2315** contacts have completed their 14 days of follow up, while **1196** out of **3644** active contacts were monitored today.

*Table 2: COVID-19 specimen recorded at NIP & Path care Laboratories
06 August 2020*

Variables	Laboratory			
	NIP	Pathcare	SA	Total
<i>Total sample received by the Laboratory</i>	24202	6691	-	30893
<i>Total sample tested</i>	21035	6408	-	27443
<i>Total sample re-tested</i>	2653	267	-	2920
<i>Total positive results</i>	1711	1090	1	2802
<i>Total negative results</i>	19728	5318	-	25046
<i>Total sample discarded</i>	68	8	-	76
<i>Invalid results</i>	1	0	-	1
<i>Total pending results</i>	41	0	-	41
<i>Indeterminant/Inconclusive</i>	-	8	-	8
<i>Suspected cases in 24 hours</i>	640	71		711

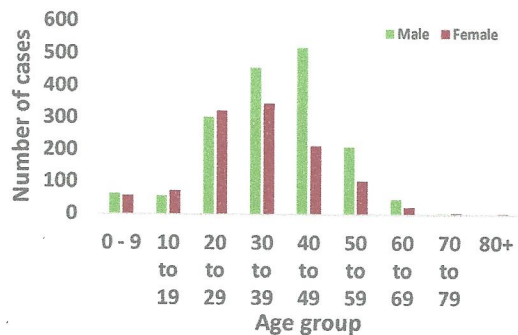


Figure 1: Age and sex distribution of COVID-19 confirmed cases, 06 August 2020

- The most affected ages are within 20 and 49 years **2155 (76.9%)**.
- Those aged 60 and above constitute **80 (2.9%)** of those affected.

Note:
Dots are spatial representation of cases but not the actual location of the cases

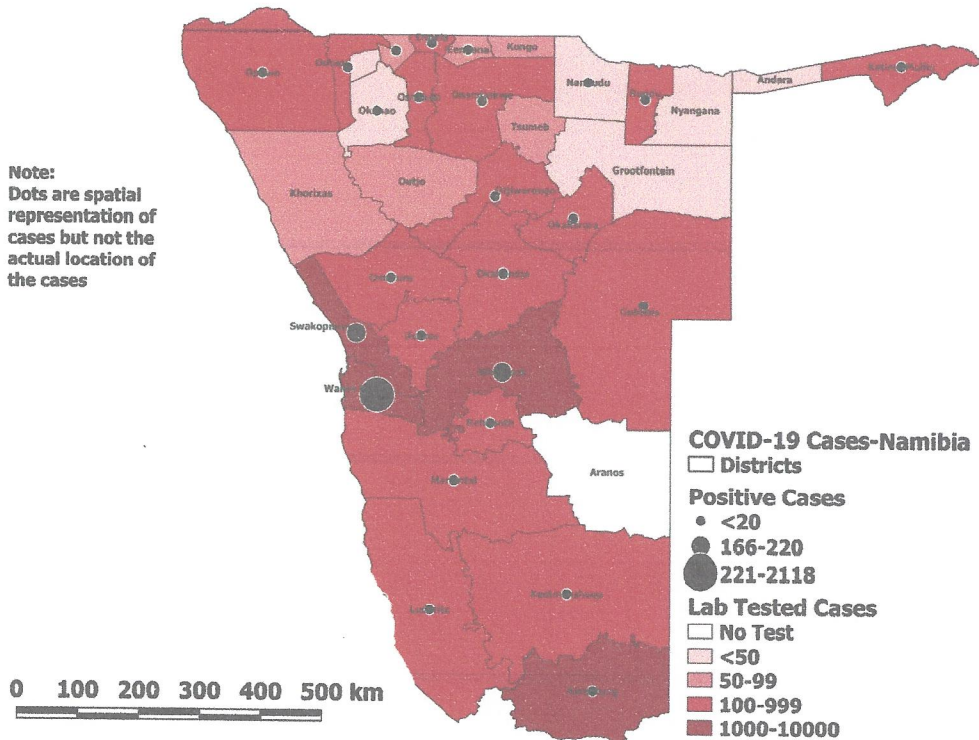


Figure 2: Distribution of suspected and confirmed COVID-19 cases in Namibia by District, 06 August 2020

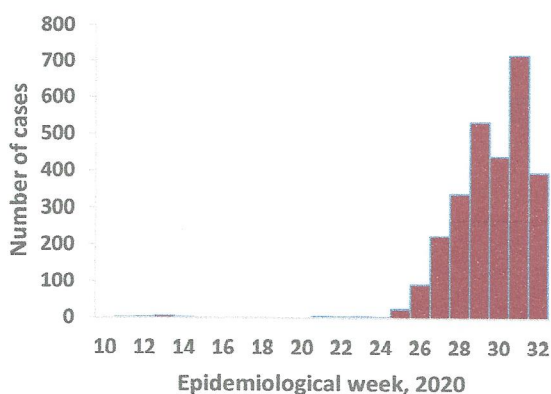


Figure 3: Epi-curve for confirmed COVID-19 cases 06 August 2020

Namibia has recorded **2802** COVID-19 cases since 13 March 2020. Up to **719** (25.7%) of the total cases were recorded during week 31 (Figure 3).

- A high number of cases were recorded in the past four weeks as a result of:
 - Spread of local transmission in Walvis Bay district
 - Enhanced Active Case Search and testing, averaging 600 tests daily in the past weeks.
- Call center continues operation for 24 hours daily. Today, **1042** calls were answered including **19** alerts.

Table 3: Number of people in mandatory quarantine facilities, 06 August 2020

Region	Newly quarantined 24 hours	Cumulative number	Number discharged	Number in quarantine now
Erongo	0	1624	822	802
Hardap	0	319	283	36
Kavango	0	172	137	35
Khomas	50	1729	1369	360
//Kharas	0	706	533	173
Kunene	0	186	120	66
Ohangwena	0	333	308	25
Omaheke	0	216	189	27
Omusati	4	179	136	43
Oshana	5	159	131	28
Oshikoto	0	116	89	27
Otjozondjupa	0	537	460	77
Zambezi	0	539	472	67
Total	59	6815	5049	1766

- Since March 2020, **6815** people have been placed into supervised quarantine facilities around the country.
- A total of **1766** people are currently in quarantine with **59** new admissions in the past 24 hours.

Table 4: Distribution of truck drivers coming into Namibia from neighbouring countries and destination regions on 06 August 2020

Destination	Country of departure						Total
	RSA	Zimbabwe	Botswana	Angola	DRC	Zambia	
//Kharas	67	0	0	1	0	0	68
Khomas	151	0	8	2	0	1	151
Omusati	2	0	0	0	0	0	2
Oshana	12	0	0	1	0	0	13
Otjozondjupa	20	0	10	0	0	0	30
Kavango	0	0	0	0	0	0	0
Ohangwena	5	0	0	1	0	1	7
Hardap	5	0	0	0	0	0	5
Kunene	0	0	0	0	0	0	0
Omaheke	1	0	0	1	0	0	2
Oshikoto	1	0	0	1	0	0	2
Zambezi	1	0	1	0	0	0	2
Erongo	16	0	24	1	7	30	78
Total	281	0	43	8	7	32	371

- A total of **371** trucks entered the country through various ground crossing points in the last 24 hours.
- Of these trucks, **40.7%** were heading to Khomas, **21.0%** to Erongo while **18.3%** were heading to //Kharas region.

PUBLIC HEALTH ACTION

- Commencement of testing by UNAM and Oshakati NIP laboratories to enhance testing capacity.
- National level continues to support the regions
- Regions have enhanced social mobilization on COVID-19
- Targeted testing in Walvis Bay and Karasburg is ongoing
- Regions have intensified surveillance on travellers from high risk areas for early case detection.

CHALLENGES

- Inadequate Human resources in the regions
- Inadequate ICU facilities and ICU equipment at referral hospitals and high care units in the districts.
- Inadequate isolation units, at health facilities in the regions.
- Inadequate PPE
- Inadequate nasopharyngeal swabs and appropriate transport media.

RECOMMENDATIONS

- The Ministry to fast track the appointment of critical positions for the response in the regions
- Provision of fully equipped ICU facilities at referral hospitals and high care units in the districts.
- Establish fully equipped isolation units at health facilities in the regions.
- Logistics pillar to continue with the procurement and distribution of sufficient PPE to the regions to ensure that response is not interrupted.
- NIP to continue sourcing for swabs and appropriate transport media.

Approved



Incident Manager

Date: 06 August 2020



Secretariat

For enquiries, please contact
Namibia Public Health Emergency Operations Centre;



PHEOC@mhss.gov.na



0800 100 100



0851 100 100