

South Sudan

Integrated Disease surveillance and response (IDSR)

Epidemiological Bulletin Week 29 of 2020 (July 13- July 19)





- In week 29, 2020 IDSR reporting completeness was 91% and timeliness was 71% at health facility level. EWARN reporting completeness was 85% and timeliness was 69%
- Of the 109 alerts in week 29, 2020; 75% were verified 0% were risk assessed and 0% required a response. Malaria (36), AWD (26), ARI (14), measles (1) and bloody diarrhea (22) were the most frequent alerts in week 29, 2020
- A total of 789 COVID-19 alerts have been investigated with 645 (81.7%) being verified.
- Total of 2286 COVID-19 confirmed cases and 45 deaths, CFR of 2%



SURVEILLANCE PERFORMANCE



For the Integrated Disease Surveillance (IDSR)
network and Early warning alert and response
network (EWARN)



IDSR timeliness & completeness performance at county level for week 29 of 20202



Completeness States Ranking	States	Supporting Partners	Total No. of Functional Health Facilities in the State	No. of HFs Reported on Time	Timeliness Percentage	No. of HFs Reported regardless of Time	Completeness Percentage
1st	WES	AMREF, World Vision, CUAMM, CDTY, OPEN	213	158	74%	212	100%
2nd	Warrap	GOAL, CCM, WVI, Malaria Consortium, UNKEA, Save the Children, MSF	120	105	88%	115	96%
3rd	Lakes	Doctors with Africa (CUAMM), LIVEWELL	113	52	46%	108	96%
4th	CES	HLSS, SSUHA, Healthnet TPO, IHO, GOAL, TRI-SS, THESO	117	102	87%	111	95%
5th	WBGZ	Cordaid, Healthnet TPO, CARE International, IOM	76	36	47%	72	95%
6th	NBGZ	Malaria Consortium, Healthnet TPO, IRC, CEDS, IHO	130	103	79%	120	92%
7th	EES	Cordaid, HLSS, CCM	146	108	74%	133	91%
8th	Upper Nile	Cordaid, WVI, RI, IMC, NIDO, UNKEA, MC, SSAID, Samaritans Purse	115	82	71%	104	90%
9th	Unity	Cordaid, UNIDOR, IRC, CHADO, CARE International, CRADA, CASS	91	64	70%	75	82%
10th	Jonglei	Nile Hope, MDM, JDF, Livewell, CMD, HFO, EDA, CRADA, Malaria Consortium, CMA	150	90	60%	106	71%
	South Sudan		1271	900	71%	1156	91%

KEY

	<60%	Poor
	61%-79%	Fair
	80%-99%	Good
	100%	Excellent

The timeliness of IDSR reporting (supported by EWARS mobile) at health facility level was 71% and completeness was 91%. All states except Jonglei were above the target of 80% with highest reporting rate in WES with completeness of 100%.

IDSR timeliness & completeness performance at county level for week 29 of 2020 (1)



STATE	COUNTY	SUPPORTING PARTNER	Total No. of Functional Health Facilities in the County	No. of HFs Reported on Time	Timeliness Percentage	No. of HFs Reported regardless of time	Completeness Percentage
Lakes	Rumbek North	Doctors with Africa (CUAMM)	7	7	100%	7	100%
NBGZ	Aweil South	Malaria Consortium(MC),IHO	9	9	100%	9	100%
NBGZ	Aweil North	HealthNetTPO,IHO	33	33	100%	33	100%
CES	Morobo	SSUHA,THESO	5	5	100%	5	100%
CES	Juba	HLSS	45	45	100%	45	100%
CES	Kajo Keji	SSUHA,GOAL,TRI-SS	16	14	88%	16	100%
Lakes	Rumbek Centre	Doctors with Africa (CUAMM)	23	17	74%	23	100%
Lakes	Wulu	Doctors with Africa (CUAMM)	14	10	71%	14	100%
CES	Terekeka	HealthNetTPO	20	13	65%	20	100%
Lakes	Cueibet	Doctors with Africa (CUAMM)	15	8	53%	15	100%
WBGZ	Wau	Cordaid	27	11	41%	27	100%
Lakes	Rumbek East	Doctors with Africa (CUAMM)	24	6	25%	24	100%
Lakes	Awerial	Doctors with Africa (CUAMM)	7	1	14%	7	100%
Lakes	Yirol West	Doctors with Africa (CUAMM)	12	0	0%	12	100%
NBGZ	Aweil West	HealthNetTPO	37	20	54%	35	95%
WBGZ	Jur River	Cordaid	35	24	69%	33	94%
CES	Yei	SSUHA	17	16	94%	16	94%
NBGZ	Aweil Centre	Malaria Consortium(MC)	15	14	93%	14	93%
WBGZ	Raja	HealthNetTPO	14	1	7%	12	86%
NBGZ	Aweil East	IRC,TADO	36	27	75%	29	81%
CES	Lainya	SSUHA	16	9	56%	9	56%
Lakes	Yirol East	Doctors with Africa (CUAMM),LIVWELL	11	3	27%	6	55%

STATE	COUNTY	SUPPORTING PARTNER	Total No. of Functional Health Facilities in the County	No. of HFs Reported on Time	Timeliness Percentage	No. of HFs Reported regardless of time	Completeness Percentage
Unity	Abiemnhom	Cordaid	4	4	100%	4	100%
WES	Nzara	World Vision International	20	20	100%	20	100%
WES	Nagero	World Vision International	10	10	100%	10	100%
WES	Mundri West	CUAMM	21	21	100%	21	100%
WES	Mundri East	CUAMM	19	19	100%	19	100%
WES	Mvolo	CUAMM	11	11	100%	11	100%
WES	Maridi	AMREF	26	25	96%	26	100%
WES	Tambura	World Vision International	26	25	96%	26	100%
Unity	Mayom	CASS	9	8	89%	9	100%
Unity	Panyijiar	IRC	15	13	87%	15	100%
WES	Ezo	World Vision International	27	18	67%	27	100%
WES	Ibba	AMREF	11	6	55%	11	100%
WES	Yambio	World Vision International	42	3	7%	41	98%
Unity	Rubkona	Cordaid,IRC,IOM,M SF	15	12	80%	14	93%
Unity	Pariang	CARE International	11	9	82%	9	82%
Unity	Leer	UNIDOR	11	9	82%	9	82%
Unity	Koch	CRADA,IRC	5	2	40%	4	80%
Unity	Guit	CHADO	7	0	0%	5	71%
Unity	Mayendit	CASS	12	7	58%	7	58%

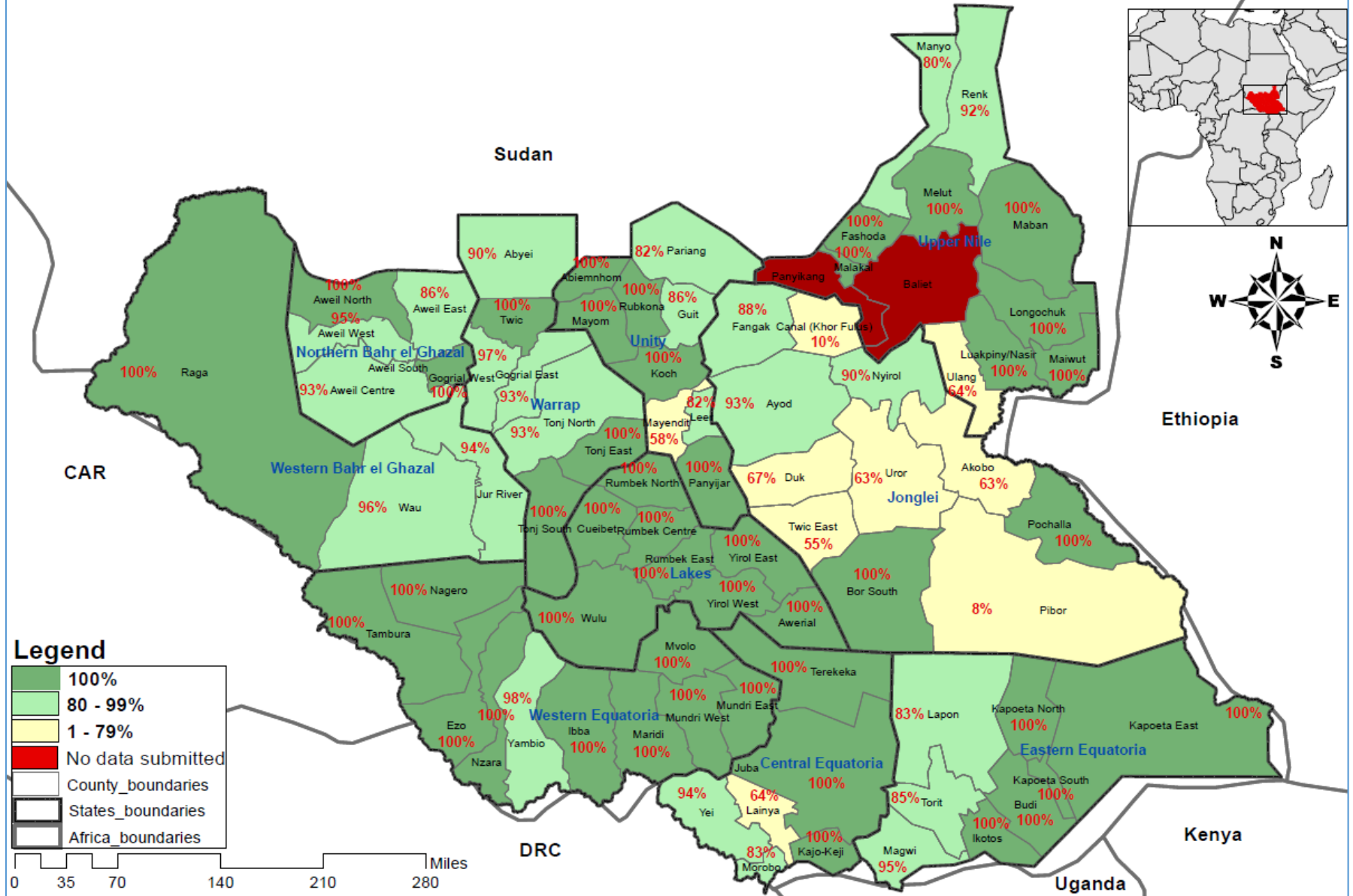
IDSR timeliness & completeness performance at county level for week 29 of 2020 (2)



STATE	COUNTY	SUPPORTING PARTNER	Total No. of Functional Health Facilities in the County	No. of HFs Reported on Time	Timeliness Percentage	No. of HFs Reported regardless of time	Completeness Percentage
Jonglei	Pochalla	LIVEWELL	7	7	100%	7	100%
EES	Kapoeta South	CCM	10	10	100%	10	100%
Jonglei	Bor	MDM + JDF	35	30	86%	35	100%
EES	Ikotos	HLSS	27	18	67%	27	100%
EES	Budi	Cordaid	21	12	57%	20	95%
EES	Kapoeta North	CCM	16	15	94%	15	94%
Jonglei	Ayod	CMD,EDA	15	14	93%	14	93%
EES	Magwi	HLSS	22	20	91%	20	91%
Jonglei	Nyrol	CMA,Malaria Consortium	10	9	90%	9	90%
EES	Lopa Lafon	HLSS	18	15	83%	15	83%
EES	Kapoeta East	CCM	12	2	17%	10	83%
Jonglei	Fangak	CMD,HFO	16	13	81%	13	81%
EES	Torit	Cordaid	20	16	80%	16	80%
Jonglei	Duk	MDM + JDF	15	10	67%	10	67%
Jonglei	Akobo	NILE HOPE	8	0	0%	5	63%
Jonglei	Uror	Nile Hope,Malaria Consortium	8	0	0%	5	63%
Jonglei	Twic East	MDM + JDF	11	5	45%	6	55%
Jonglei	Pibor	LIVEWELL,CRADA	3	1	33%	1	33%
Jonglei	Canal Pigi	IMC	11	1	9%	1	9%

STATE	COUNTY	SUPPORTING PARTNER	Total No. of Functional Health Facilities in the County	No. of HFs Reported on Time	Timeliness Percentage	No. of HFs Reported regardless of time	Completeness Percentage
Warrap	Tonj East	CCM	12	12	100%	12	100%
Warrap	Tonj North	CCM	14	14	100%	14	100%
Warrap	Tonj South	CCM	12	12	100%	12	100%
Upper Nile	Longechuk	RI	9	9	100%	9	100%
Upper Nile	Melut	WVI + RI	8	6	75%	8	100%
Upper Nile	Maban	WVI,RI,Samaritans Purse	16	11	69%	16	100%
Upper Nile	Manyo	CORDAID	8	3	38%	8	100%
Warrap	Twic	GOAL	26	19	73%	25	96%
Warrap	Gogrial West	GOAL	31	28	90%	29	94%
Warrap	Gogrial East	GOAL	15	14	93%	14	93%
Upper Nile	Fashoda	CORDAID	14	12	86%	13	93%
Warrap	Abyei	AAA,Save the Children,MSF	10	6	60%	9	90%
Upper Nile	Makal	IMC	8	2	25%	7	88%
Upper Nile	Renk	WVI + RI	14	12	86%	12	86%
Upper Nile	Akoka	IMC	5	3	60%	3	60%
Upper Nile	Luakpiny Nasir	UNKEA,RI	26	14	54%	15	58%
Upper Nile	Ulang	UNKEA,RI	18	8	44%	8	44%
Upper Nile	Maiwut	RI	10	2	20%	5	50%
Upper Nile	Baliet	IMC	5	0	0%	0	0%
Upper Nile	Panyikang	IMC	4	0	0%	0	0%

Map showing completeness of reporting by county in week 29, 2020.



Disclaimer: The boundaries and names shown and the designations used on this map do not imply the expression of any opinion whatsoever on the part of the World Health Organization concerning the legal status of any country, territory, city or area or of its authorities, or concerning the delimitation of its frontiers or boundaries.



Surveillance: EWARS performance indicator by partner for week 29 of 2020

Partner	HFs	Reporting		Performance	
PARTER	# OF SITES	# of reports received on Time	No. of HFs Reported regardless of time	Timeliness	Completeness
Medair	2	2	2	100%	100%
IMC	6	6	6	100%	100%
World Relief	2	2	2	100%	100%
CMD	1	1	1	100%	100%
IRC	1	1	1	100%	100%
RHS	1	1	1	100%	100%
THESO	1	1	1	100%	100%
IOM	12	12	12	100%	100%
HFO	1	1	1	100%	100%
MSF-E	6	4	6	67%	100%
MDM	10	5	10	50%	100%
GOAL	2	0	2	0%	100%
TRI-SS	2	0	2	0%	100%
IMA	9	8	8	89%	89%
MSF-H	5	3	3	60%	60%
UNIDOR	2	1	1	50%	50%
SMC	6	1	1	17%	17%
UNH	2	0	0	0%	0%
TOTAL	71	49	60	69%	85%

Completeness was 85% and timeliness was 69% for weekly reporting in week 29, 2020 for partner-supported clinics serving IDP sites.

EVENT-BASED SURVEILLANCE



Alert management including detection; reporting; verification; risk assessment; & risk characterization





Alert by disease and hubs in week 29 of 2020 [a total of 109 events specific alerts generated by state

State	Acute jaundice syndrome	Acute Respiratory Infections (ARI)	Acute Watery Diarrhoea	Bloody Diarrhoea	Malaria (Confirmed)	Measles	Neonatal Tetanus	Yellow Fever	PoE COVID EVD	Covid-19	Total alerts
CES		1	4						1		6
EES			2	3	4				1		10
Jonglei			1		1					1	3
NBGZ			1								1
Unity				2						2	4
Upper Nile		2	3	6	5						16
Warrap			2	5	5					1	13
WBGZ		2	4	3	2		1		1		13
WES	1	9	9	3	19	1		1			43
	1	14	26	22	36	1	1	1	3	4	109

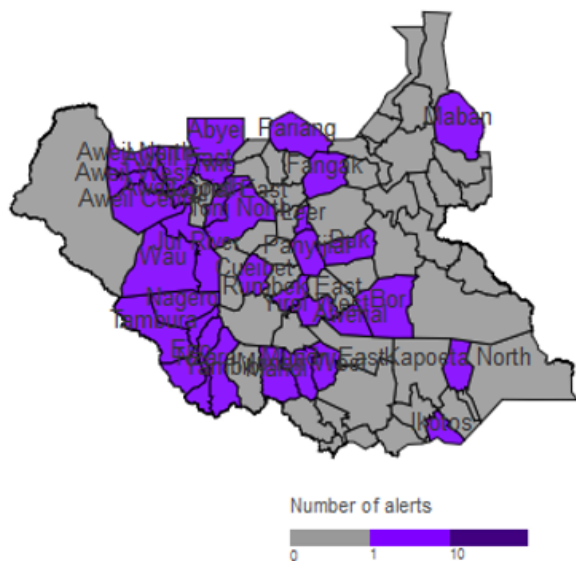
During this week:

- 14 ARI alert: 3 are undergoing verification and 11 under monitoring
- 1 AJS alert: State RRT was deployed, samples were collected and shipped to Juba
- 26 AWD alert: 8 are undergoing verification and 18 under monitoring
- 22 ABD: 6 are undergoing verification and 16 under monitoring
- 36 Malaria alerts: 14 are undergoing verification and 22 under monitoring
- 1 Measles alert: under monitoring
- 3 PoE COVID EVD alert: 2 are undergoing verification and 1 under monitoring
- 4 COVID-19 alert: all are under monitoring
- 1 Neonatal Tetanus alert: under monitoring
- 1 Yellow fever alert: RRT was deployed, samples were collected and shipped for testing

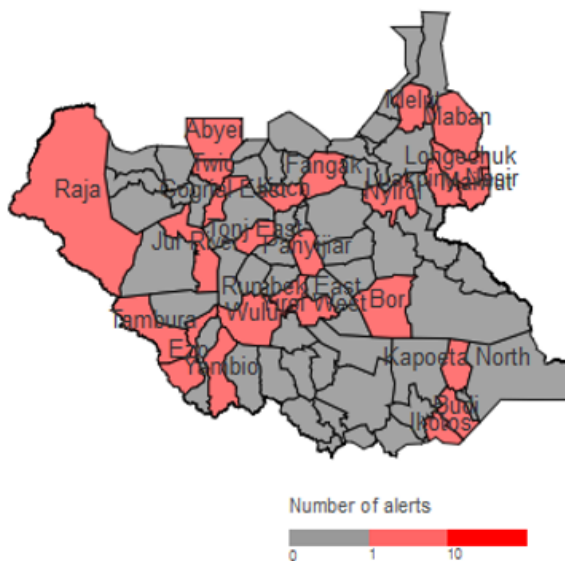
Alert: Map of key disease alerts by county of week 29 of 2020



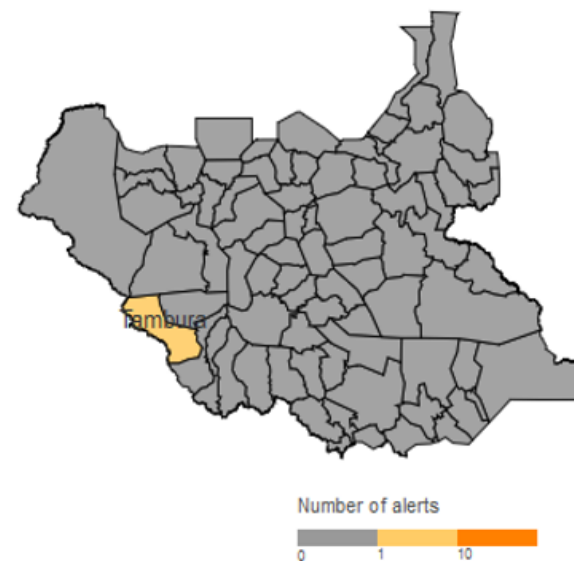
Map 2a | Malaria (W29 2020)



Map 2b | Bloody diarrhoea (W29 2020)



Map 2c | Measles (W29 2020)



W29	Cumulative (2020)	
0	11	Low risk
4	4	Medium risk
0	24	High risk
0	51	Very high risk
75%	75%	% verified
0%	0%	% auto-discarded
0%	2%	% risk assessed
0%	1%	% requiring a response

SUSPECTED OUTBREAKS



Major suspected outbreaks in South Sudan in
2020



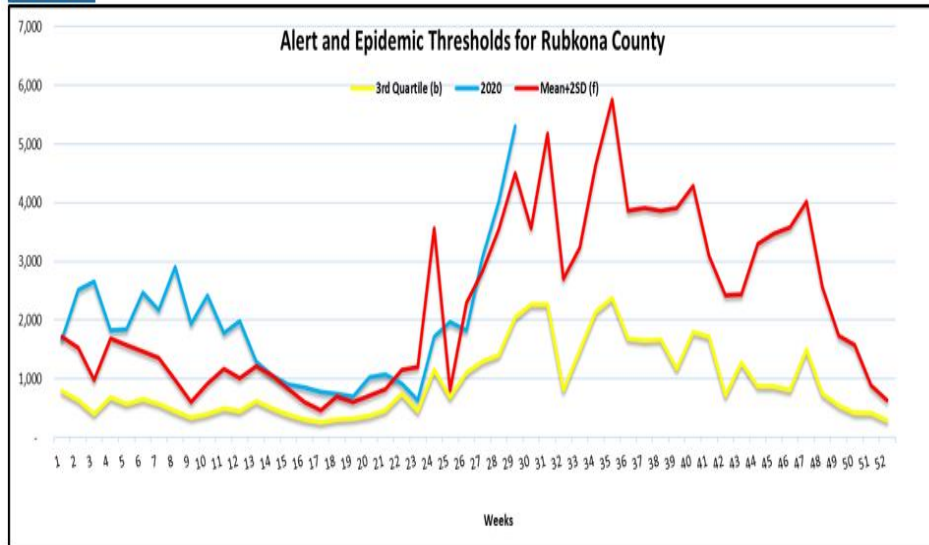


Malaria was the leading cause of morbidity and mortality, accounting for **57.8%** of all morbidities and **53.3%** of all mortalities in week 16, 2020

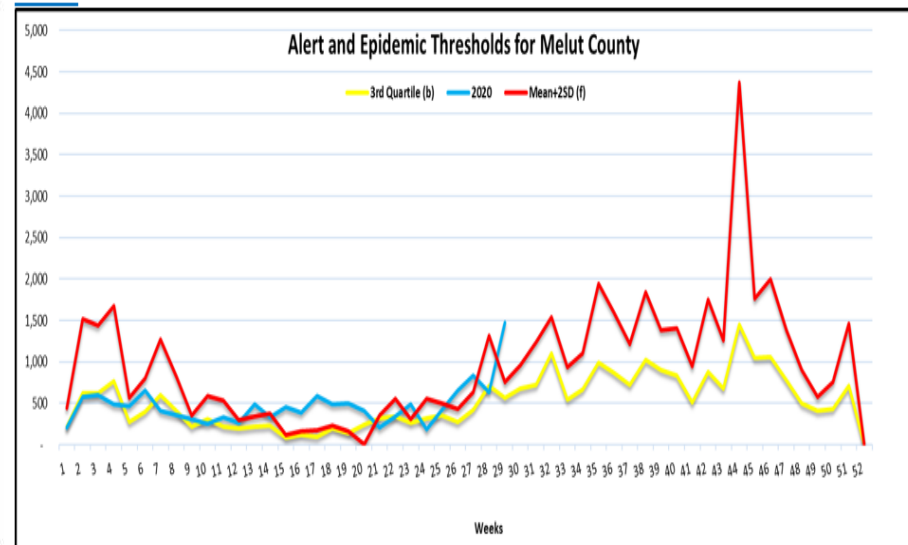
There is 4 Counties with malaria trends that exceeded the threshold (third quartile of trends for the period 2013-2017) and these include the following 8 counties:

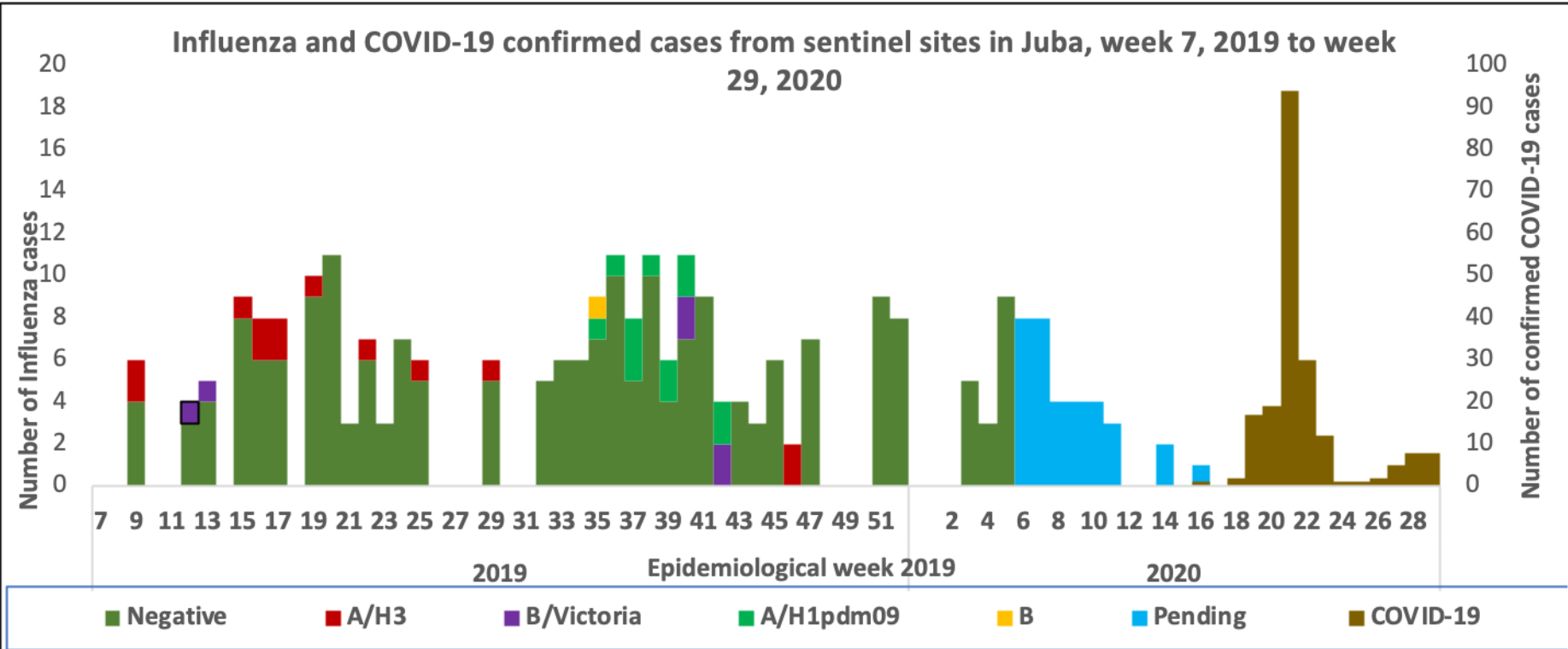
- ✓ WBGz state (**Wau, Raja**)
- ✓ Warrap State (**Tonj North , Twic Mayardit**)
- ✓ Jonglei State (**Bor**)
- ✓ Unity State (**Rubkona**)
- ✓ Upper Nile (**Melut**)

Rubkona



Melut.





- In week 7, 2019, South Sudan started case-based surveillance for Influenza Like Illness (ILI) and Severe Acute Respiratory Infection (SARI) cases through systematic collection of epidemiological and virological information.
- There are currently 45 designated sentinel surveillance sites in Juba that are collecting epidemiological data and samples from ILI/SARI cases
- In 2019, a total of 309 ILI/SARI samples have been collected and tested in UVRI 228 being negative; 6 positive for Influenza B (Victoria); 13 positive for Influenza A (H3); and 12 positive for Influenza A (H1)pdm09 and (50) samples are pending test results .
- in week 29 of 2020 the sentinel sites collected 2634 samples and are being tested in country, 2108 samples tested negative for COVID-19, 198 samples tested positive for COVID-19 and 328 samples are pending test results.

ACTIVE OUTBREAKS AND PUBLIC HEALTH EVENTS



Brief epidemiological description and public health response for active outbreaks and public health events





Aetiological agent	Location (county)	Date first reported	New cases since last bulletin	Cumulative cases to date (attack rate %)	Interventions			
					Case management	Vaccination	Health promotion	WASH
Ongoing epidemics								
Hepatitis E	Bentiu PoC	03/01/2018	15	359 (0.04)	Yes	No	Yes	Yes
Measles	Bentiu PoC	24/04/2019	NR	482 (0.006)	Yes	Yes	Yes	N/A





● Measles outbreaks confirmed in 2020

❑ **6 counties – Tonj East, Magwi, Bor, Kapoeta East, Tonj South and Aweil East**

❑ **Locations with ongoing measles transmission**

- **Bentiu PoC**
- **Wau County**

No new confirmed measles cases



Measles Outbreak situation & response by county as of week 29, 2020

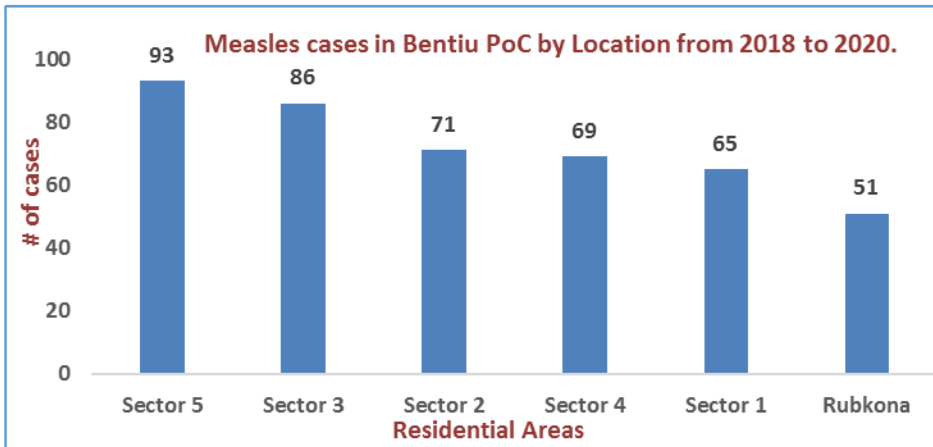
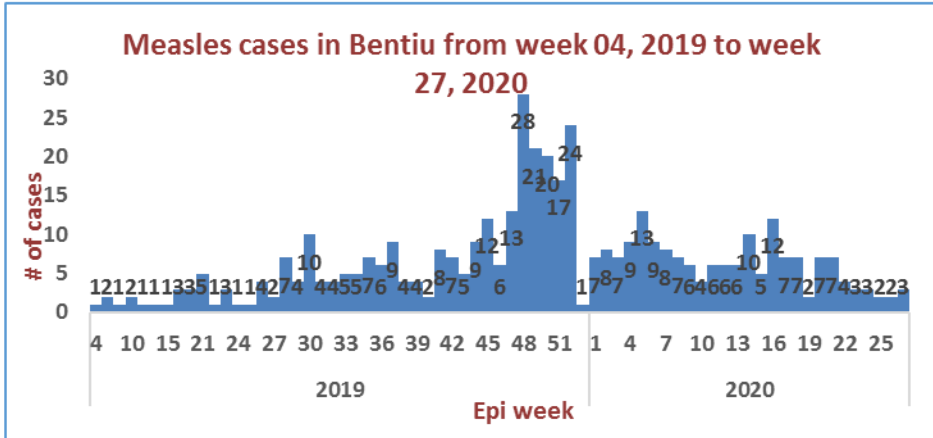


S/N	County	Population	Confirmed cases	Probable cases	Total cases	Cases per 100,000	Total deaths	CFR %	Date first reported	Emergency Campaign	Admin Coverage	Implementing Partner	Status	Comments
1	Tonj East	183,233	13	48	61	33.3	0	0	12-Dec-19	Mass Campaign	Pending result	Mass Campaign	controlled	Mass Campaign Completed
2	Magwi	272,880	5	5	10	3.7	0	0	19-Sep-19	Mass Campaign	Pending result	Mass Campaign	controlled	Mass Campaign Completed
3	Bor	320,956	7	7	14	4.36	0	0	17-Jan-19	Mass Campaign	115.60%	Mass Campaign	controlled	Mass Campaign Completed
4	Kapoeta East	262,720	6	10	16	6.1	0	0	18-Jan-20	Reactive Campaign (Jebel Boma)	Reactive Campaign to start on 26 Feb 2020	IRC	active	Reactive Campaign completed in March 2020
5	Aweil East	519,537	16	469	694	127.8	0	0	02-Jan-20				active	Reactive campaign started on 22 June 2020
6	Bentiu Poc	115,479			455	83	2	2	01-Jan-19	Reactive campaign	126%	IOM	Active	Reactive campaign 20 Jan 2020
7	Wau	271,975	3	0	22	8.1	0	0	14-Jan-20	Enhanced routine immunization	N/A		Active	Enhanced surveillance
Total		1,427,243	50	539	1272	266.36	2	0.23						





Confirmed Measles Outbreak in Bentiu PoC



Age Group	Cases	Percentage	Cum. %
0 - 4 Years	456	95%	95%
5 - 9 Years	14	3%	98%
10 - 14 Years	8	2%	99%
15+ Years	4	1%	100%
Grand Total	482	100%	

Epidemiological description

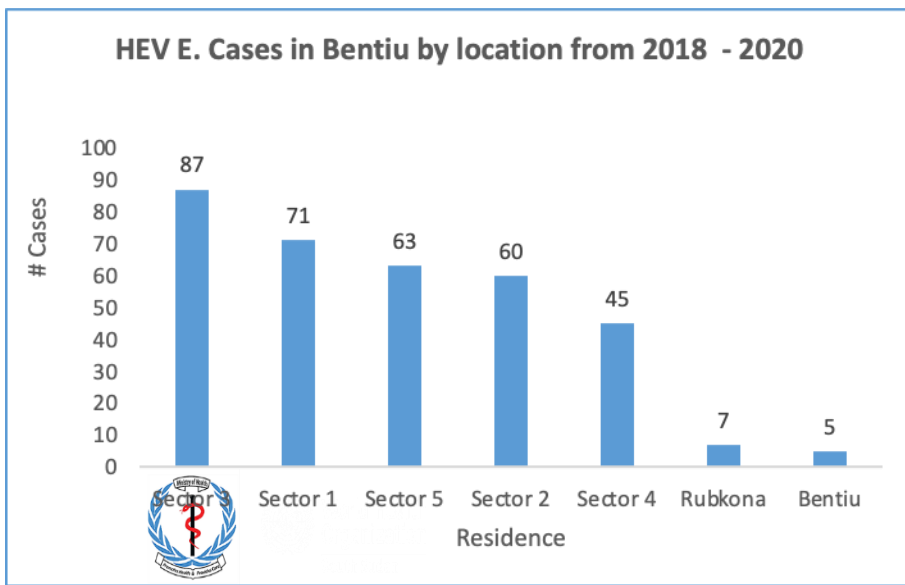
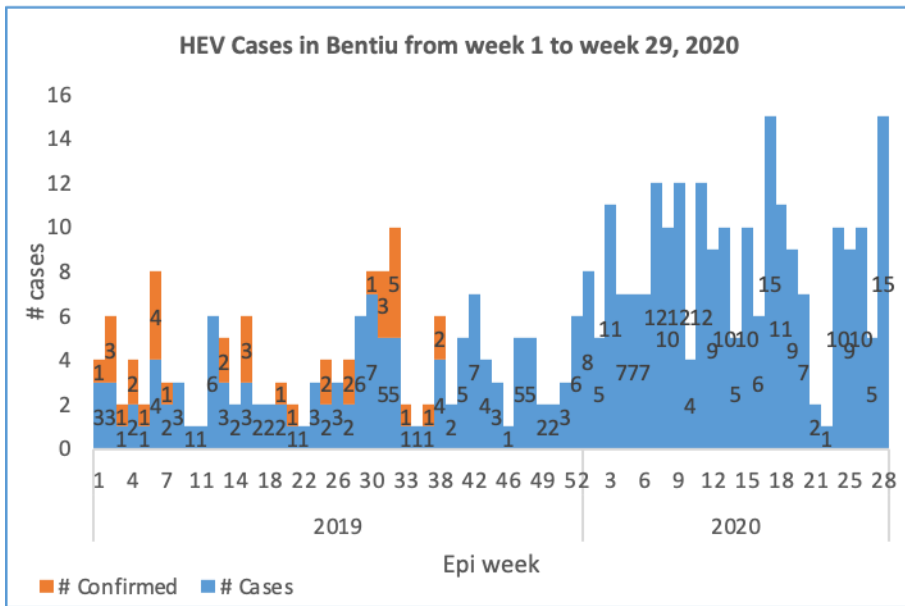
- Bentiu PoC has been reporting suspected measles/rubella cases since week 4 of 2019.
- 3 new cases reported in week 26, 2020
- At least 482 measles cases including 1 death (CFR 0.002%) reported since then.
- Cumulatively, 36 tested cases have tested measles IgM positive while 15 tested rubella IgM positive.
- 47% of cases are female and 53% are male
- 95% are under 5 yrs old, 5% are 5 yrs old and above
- Cases have been reported from inside and outside the PoC with most of the cases originating from the PoC (most cases from sector 5 but generally all the sectors are affected).

Response actions

- Several rounds of reactive campaigns were conducted in Bentiu IOM:
 - IOM completed a reactive campaign in Bentiu POC on 31 May 2019, with 21,285 children 6-59 months and coverage of 126% receiving measles vaccination. PCE was done by MoH & WHO, coverage was 74.6%.
 - Another campaign was conducted by SMOH, IOM and partners which was completed during the week of 20th January 2020 with coverage of 126%.
 - Partners to strengthen routine immunization to continue to collect samples from suspect cases.
 - Measles case management to continue



Hepatitis E, Bentiu PoC (1)



Descriptive epidemiology

- The persistent transmission of HEV in Bentiu PoC continues with 359 cases since beginning of 2019
- There were (15) new cases reported in week 29, 2020
- All the cases were managed as outpatient cases except for seven cases who were admitted
- Two deaths one on 12th, April 2019 and the second on 11th July 2019
- 51% are female and 49% are male.
- Age group less than 15 years had the most cases with (75%) cases.
- At risk of adverse outcomes when infected in the 3rd trimester of pregnancy
- Use of unsafe drinking water likely to be source of infection
- Up to week 29, 2020; there were 359 cases of HEV in Bentiu PoC including 4 deaths (CFR 1.1%)

Age-Group	Alive	Dead	Grand Total	Percentage	CFR	Cum. %2
1 - 4 Years	115	0	115	32%	0%	32%
10 - 14 Years	56	0	56	16%	0%	48%
15+ Years	85	3	88	25%	3%	72%
5 - 9 Years	98	2	100	28%	2%	100%
Grand Total	354	5	359	100%	0.01	

Recommendations

- Supportive case management guided by the HEV protocol is ongoing
- KEV messages on HEV prevention should continue within the community through HPs, CHWs and Kondial Radio
- With current COVID -19 Pandemic Outbreak, WASH partners to increase the coverage of hand washing facilities within the PoCs community.
- Other Wash intervention like increasing the access for clean water and improving the water storage in the affected individuals should be made urgently by distributing the water storage containers that will be the only way to mitigate this problem and stop the HEV outbreak.
- The WASH Cluster/HEV task force should engage in group discussion with Community leaders and woman group at water distribution points to understand their opinions on issue of Collapsing Jerrycans distribution.
- Monitoring the FRC levels at the taps stands in the different sectors, and the concentration of chlorination should maintain at 0.5-1mg/L as the point of collection





Aetiological agent	Location (county)	Date first reported	New cases since last bulletin	Cumulative cases to date (attack rate %)	Interventions			
					Case management	Vaccination	Health promotion	WASH
Controlled epidemics								
Measles	Juba	21/11/2019	NR	6(0.1667)	Yes	No	Yes	N/A
Measles	Tonj East	12/12/2019	NR	61(0.98)	yes	Yes	Yes	N/A
Measles	Bor	17/01/2020	NR	14(0.214)	yes	No	yes	N/A
Measles	Jebel Boma	10/12/2019	NR	96(0.063)	yes	No	Yes	N/A
Measles	Kapoeta East	18/01/2020	NR	16(0.625)	yes	No	Yes	N/A
Measles	Aweil East	29/12/2019	NR	664 (0.127)	Yes		No	Yes



EBOLA VIRUS DISEASE[EVD] PREPAREDNESS IN SOUTH SUDAN



Brief on the Ebola situation in DR Congo and updates on EVD preparedness in South Sudan

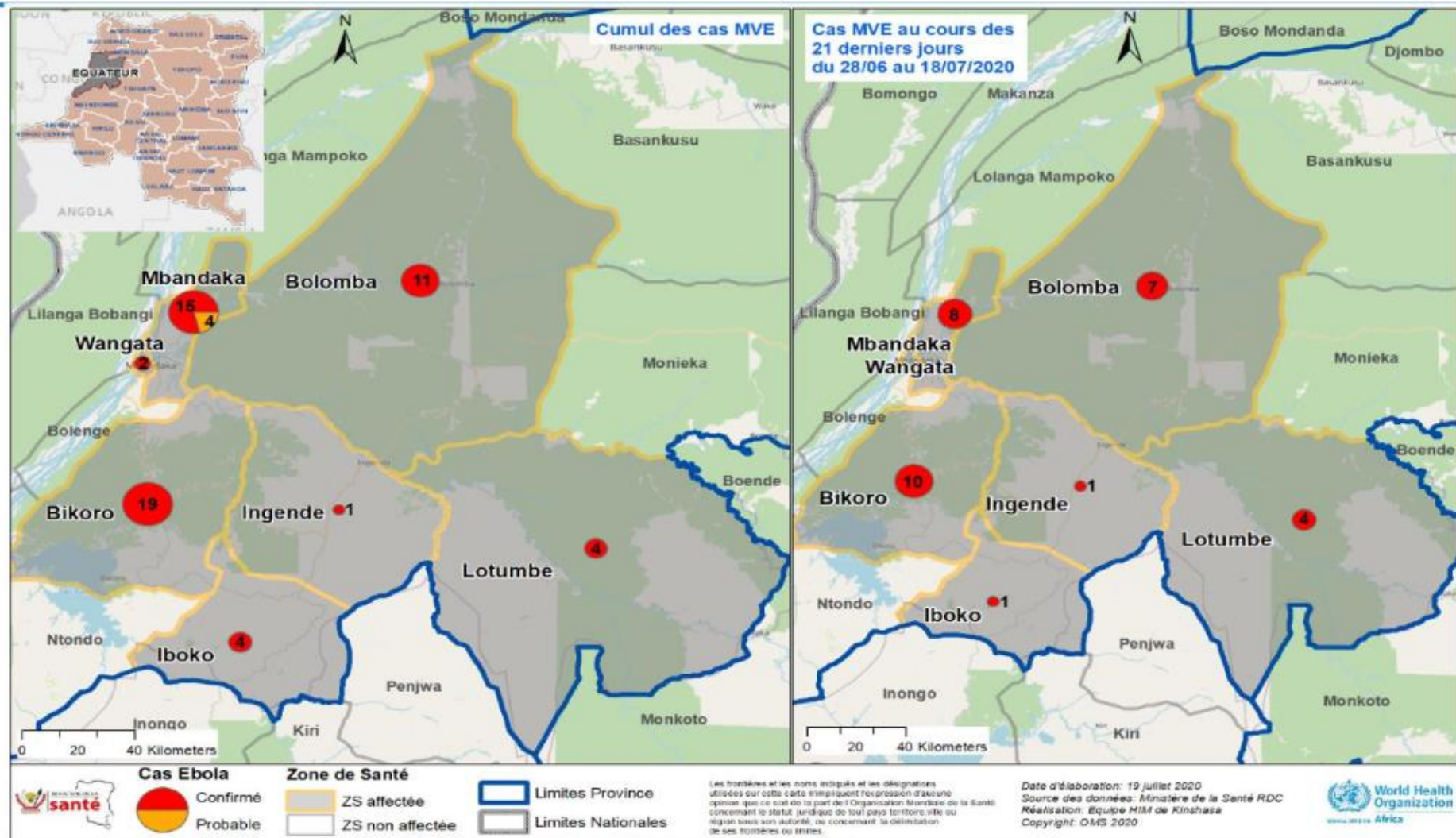




- 8 newly confirmed cases reported between the 13th and 18th July including 2 new deaths among confirmed cases.
- Cumulative: 60 cases (56 confirmed; 4 probable) including 24 deaths (CFR: 40%). 2 health workers infected, 1 nosocomial infection; 17 survivors discharged to date.
- One new health zone (Ingende) affected. In total, 21 health areas across 7 HZs affected.
- Surveillance: On 18th July, 4989/6272 (79.5%) active contacts have been seen. Among those unseen (n=491), 286 were never seen, 166 not seen in 24 hours, 33 had travelled and 6 were lost. 15 contacts became symptomatic. 596 contacts ended follow up.
- Alerts: as of 18th July, 384 alerts recorded of which 369 (96.1%) investigated, 50 were validated and 22 sampled. Active case finding activities were carried out in 137 HF across 4 HZs.



Distribution of EVD cases, Equateur Province, as of 18 July, 2020 (n = 60)



Novel Coronavirus





Situation update as of 25th July 2020

Situation in numbers (by WHO Region)

Total (new cases in last 24 hours)

Globally	15 581 009 cases (284 083)	635 173 deaths (6 270)
Africa	679 962 cases (20 614)	11 340 deaths (339)
Americas	8 292 311 cases (170 611)	329 699 deaths (4 074)
Eastern Mediterranean	1 456 365 cases (14 019)	37 050 deaths (450)
Europe	3 192 041 cases (21 659)	209 930 deaths (509)
South-East Asia	1 678 994 cases (53 430)	38 993 deaths (882)
Western Pacific	280 595 cases (3 750)	8 148 deaths (16)

WHO: <https://www.who.int/health-topics/coronavirus>





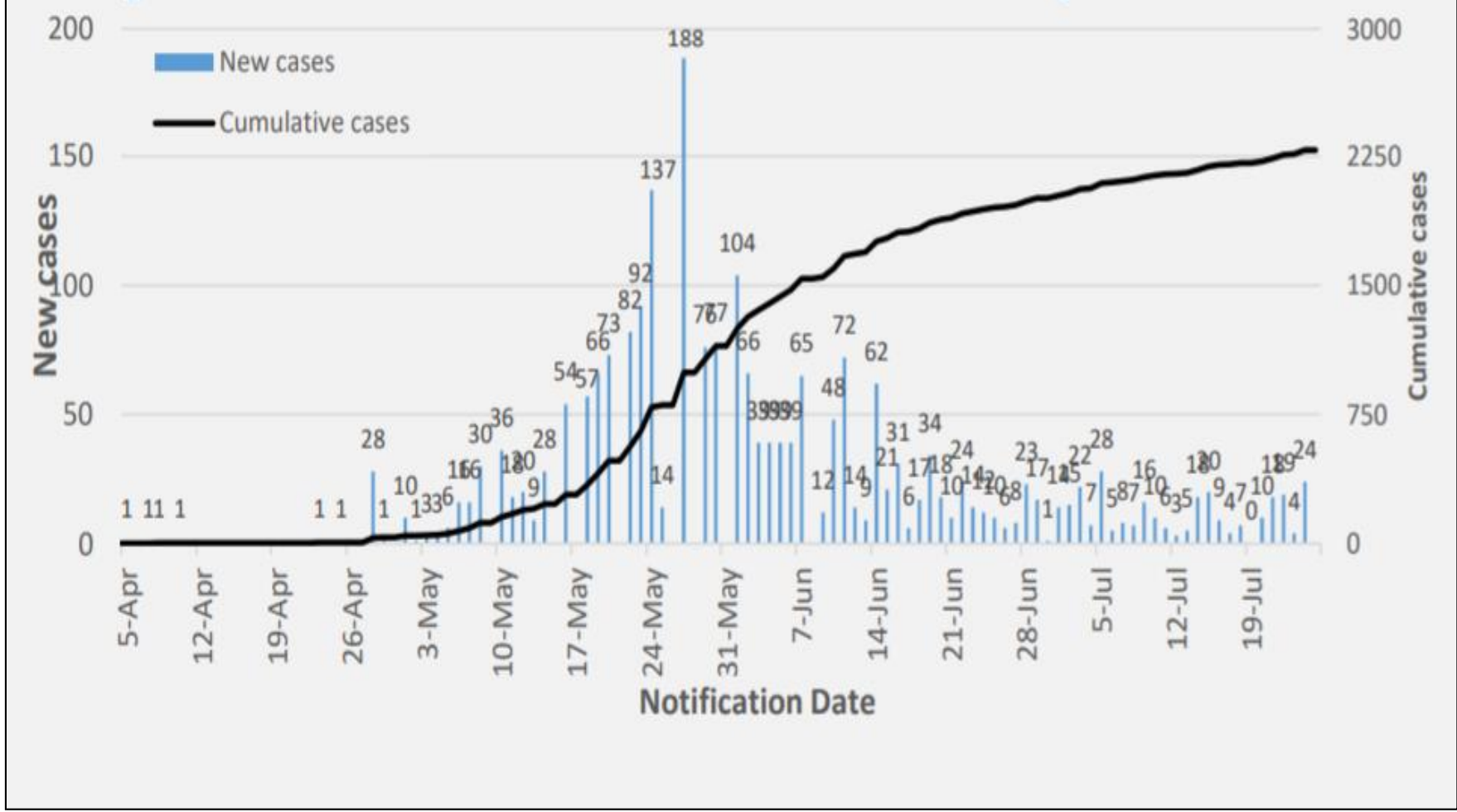
- 2286 confirmed COVID-19 cases in South Sudan; 85% in Juba with 45 deaths and a case fatality rate (CFR) of 2%. Total 5170 contacts identified, quarantined, & undergoing follow up
- Implementation of priorities; risk communication; active case search and testing; quarantine for contacts; infection prevention and control; and management of cases are currently underway
- The overall response currently led by the COVID-19 high level taskforce and the COVID-19 steering committee





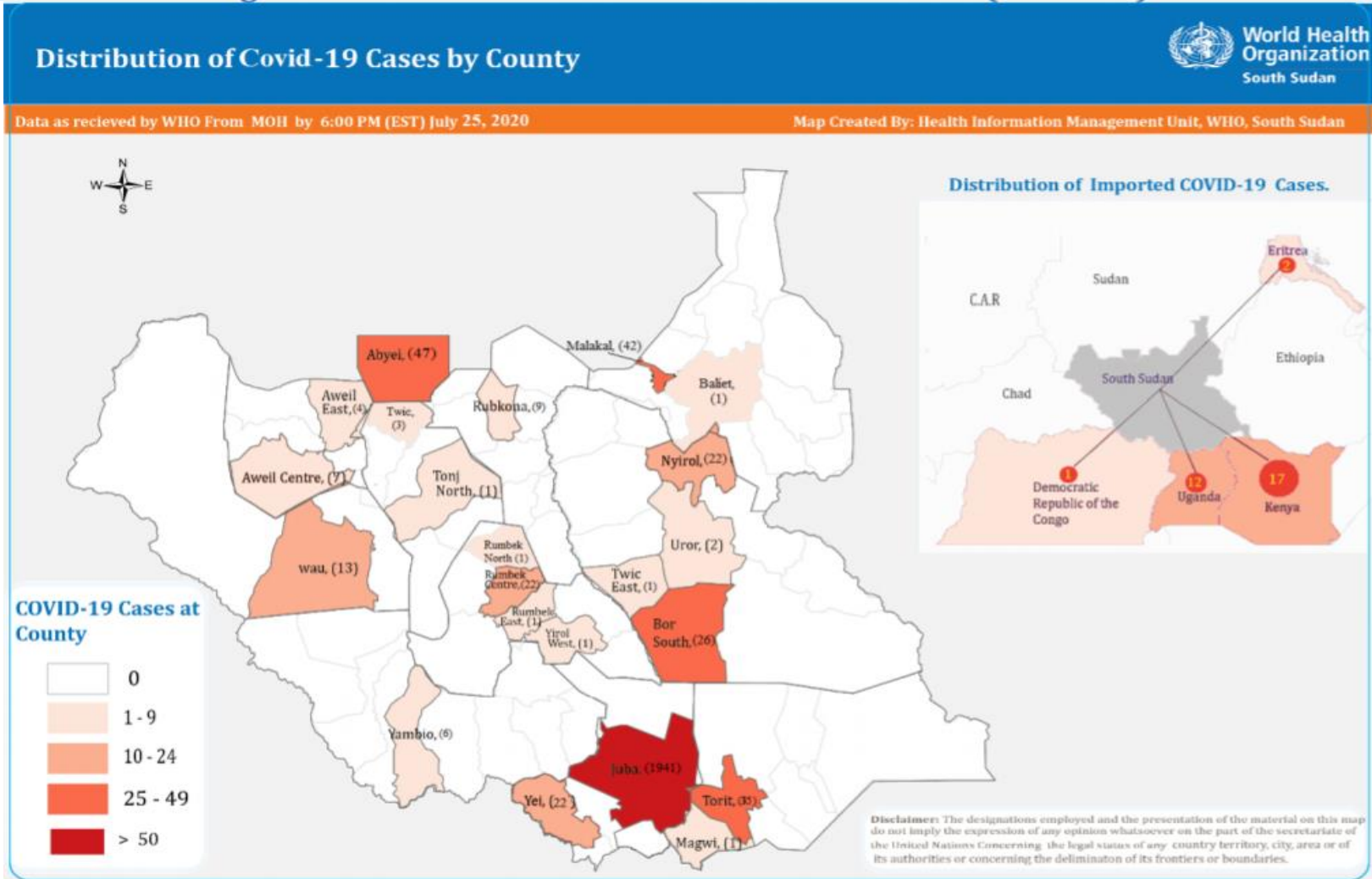
Trends of COVID-19 cases in South Sudan

Figure 1. New and cumulative confirmed COVID-19 cases by notification date



COVID-19 cases increasing exponentially in the past few weeks

Distribution of COVID-19 cases in South Sudan



**Geographical information is available for 2 240 cases.*

The majority of the cases have been reported in Juba; while the rest have been imported (involving truckdrivers from the neighboring countries)

Overall Conclusions and Recommendations



Conclusion

- The overall IDSR and EWARN reporting performance in week 29, is above the target of 80%. (9) states were above 80%
- 2286 confirmed COVID-19 cases in South Sudan; 85% in Juba with 45 deaths (CFR of 2%). Total 5170 contacts identified, quarantined, & undergoing follow up
- Cumulative total of COVID-19 alerts is 787, of these, 645 (81.7%) have been verified and samples were collected
- With six outbreaks confirmed in 2020; measles remains the most frequent vaccine preventable disease
- There are ongoing measles outbreak in Bentiu PoC
- Given the COVID-19 pandemic, it is critical that measures are stepped up to contain its spread.



Recommendations

- All partners should support CHDs & HF in Upper Nile and other states to improve IDSR/EWARN reporting
- Measles SIAs, routine immunization, surveillance & case management recommended in response to cases in Bentiu PoC.
- Strengthen capacities for COVID-19 containment through identifying and testing suspect cases, isolating confirmed cases, and quarantining contacts



Thanks to the State Surveillance Officers, County Surveillance Officers and Health Facility in-charges for sharing the weekly IDSR data

Thanks to all partners for supporting IDSR weekly reporting and sharing the line lists

To access the IDSR bulletins for 2020 use the link below:

<https://www.afro.who.int/publications/south-sudan-weekly-disease-surveillance-bulletin-2020>



This bulletin is produced by the Ministry of Health with Technical support from WHO

For more help and support, please contact:

Dr. Pinyi Nyimol Mawien
Director General Preventive Health Services
Ministry of Health
Republic of South Sudan
Telephone: +211916285676

Mr. Mathew Tut M. Kol
Director, Emergency Preparedness and Response
Ministry of Health, RSS
Tell: +211916010382, +211922202028
Emails: tut1988@yahoo.com, greensouth2020@gmail.com
Skype: mathew19885

IDSR Bulletin Editorial Team

1. Mr. Ajak Ater, MoH - Email: ajakater014@gmail.com
2. Ms. Sheila Baya, WHO- Email: bayas@who.int
3. Mr. Robert Lasu Martin, WHO -Email: lasur@who.int
4. Mrs. Rose Dagama , WHO - Email: dagamaa@who.int
5. Dr. Abraham Adut, WHO- Email: abenegoa@who.int
6. Dr. Alice Igale Lado, WHO - Email: ladua@who.int
7. Dr. Joseph Wamala, WHO - Email: wamalaj@who.int
8. Dr. Argata Guracha Guyo, WHO - Email: guyo@who.int

Notes

WHO and the Ministry of Health gratefully acknowledge the surveillance officers [at state, county, and health facility levels], health cluster and health pooled fund (HPF) partners who have reported the data used in this bulletin. We would also like to thank ECHO and USAID for providing financial support.

The data has been collected with support from the EWARS project. This is an initiative to strengthen early warning, alert and response in emergencies. It includes an online, desktop and mobile application that can be rapidly configured and deployed in the field. It is designed with frontline users in mind, and built to work in difficult and remote operating environments. This bulletin has been automatically published from the EWARS application.

More information can be found at <http://ewars-project.org>

