

KEY FIGURES

7.5M People in Need of Humanitarian Assistance	2.24M South Sudanese Refugees
1.67M Internally Displaced	1.3M Malnourished Children
188K Persons living in PoC ¹	352K Malnourished Women
64 Stabilization Centers	6.48M Severely Food Insecure
121 066 (20%)	Children under one year vaccinated with oral polio vaccine
962 158	Initial numbers of children vaccinated against measles
8	Counties with confirmed measles outbreaks in 2020
1	PoC ¹ s sites with confirmed measles outbreaks in 2020
2	Counties with malaria cases surpassing their set thresholds

COVID-19 SITUATION

2 847 confirmed cases	55 deaths	2 655 recoveries
---------------------------------	---------------------	----------------------------

HIGHLIGHTS

- Since the first case of COVID-19 confirmed in South Sudan on 5 April 2020, a total of 2 847 cases and 55 deaths have been confirmed, with case fatality rate (CFR) of 1.9 percent including 196 imported cases.
- An estimated 800 000 people across 37 counties along the White Nile have been affected by floods in South Sudan since July 2020.
- Outbreak of circulating Vaccine-derived Poliovirus type 2 (cVDPV2) confirmed in South Sudan with 3 cases reported in two states, and another 12 cases of Polio virus type 2 (PV2) reported between September 4 and October 15, 2020 in four States.
- On 5 October 2020, the National Rapid Response Team (RRT) investigated suspected Viral Haemorrhagic Fever (VHF) in Raja County as 3 women died within the same household.



WHO EPI officer during an investigation of Acute Flaccid Paralysis in Cueibet County, Lakes State. Photo: WHO

¹ UN Protection of Civilians'

Overview of the Humanitarian Crisis

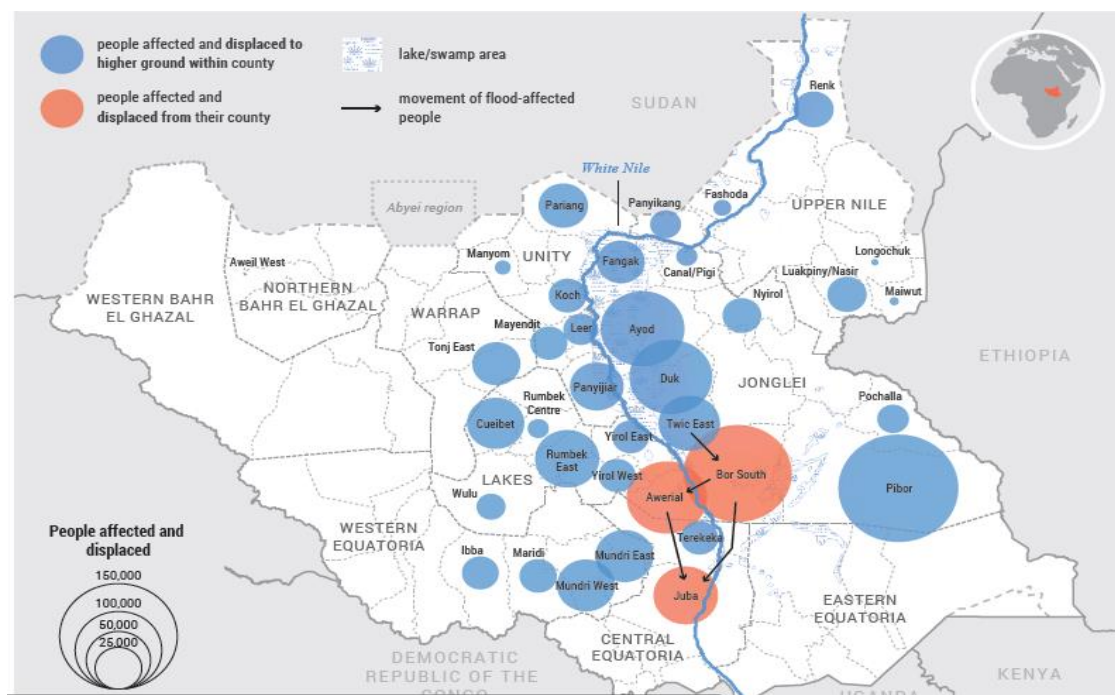
- **Updates on flooding in South Sudan** - The latest numbers show more than 800 000 people have been affected by flooding in areas along the White Nile since July. Over 80 percent of the people affected by the flooding are in Jonglei, Lakes and Upper Nile states. Many of the people affected and displaced moved to higher ground near their homes. However, reports are showing that river levels are still rising.
- **Some 680 people flee to Uganda from Kajo-keji due to clashes** - On 12 October, clashes broke out between the SPLA-iO and loyalists of a breakaway General who defected to South Sudan People's Defence Forces (SSPDF). A partner confirmed that 680 people fled to Uganda after the fighting broke out in Kajo-keji.
- **A total of 1 550 households supported with emergency assistance in Greater Lainya County** - On 11 October, a faith-based organization distributed food assistance and dignity kits to 1 550 vulnerable IDP households in Lukurban of Greater Lainya County.
- **Partners temporarily restrict movement in Pieri, Uror County due to reports of heavy gunfire** - On 7 October, heavy gunfire was heard in Pieri, Uror County. Partners operating in the area were advised to restrict movement. It was later reported that the gunfire were warning shots fired by youth to alert the community.
- **Update: Inter-agency assessment of conflict-affected people conducted in Labrab in the Greater Pibor Administrative Area** - On 12 October, partners shared the findings of a IRNA to the Greater Pibor Administrative Area (GPAA) to flood and conflict-affected people. The priority needs identified are food, WASH, emergency shelter and NFIs, nutrition, health and gender-based violence kits.
- **Humanitarian activities suspended in Renk by youth protests over employment opportunities** - On 13 October, humanitarian partners in Renk suspended their activities following a protest by youth who are demanding job opportunities in the area. The youth are reportedly demanding that positions held by people from other regions of South Sudan be vacated and given to them.

Emergency Response Activities

Floods Preparedness and Response Activities in 2020

- An estimated 800 000 people have been affected by flooding in areas along the White Nile since July. Entire communities have fled to higher ground to escape the rising waters and approximately 366 000 people are currently displaced.
- Women and children are most affected. Rapid needs assessments have now been completed in the majority of the 37 counties affected by floods. Eleven counties are being prioritized for a scale up in operations.
- Humanitarian partners on the ground are working tirelessly, with the resources they have, to meet the growing needs of the flood-affected people. The majority of the 800 000 people affected have been reached with food assistance and over 100 000 people have received health support. Emergency shelter and non-food items distribution; water, sanitation and hygiene support; and protection services are ongoing but response gaps remain high.
- Humanitarian space on the ground remains a challenge, with vast areas of the country underwater and COVID-19 preventive measures in place. Insecurity and resource constraints are limiting partners' capacity to respond effectively. Some US\$46 million is required to respond to immediate needs through to the end of 2020, out of an overall ask of \$82 million.

People Affected and Displaced by floods



Surveillance, Epidemiological Update, and Response for Disease Outbreaks

Emergency Nutrition Updates

- WHO South Sudan conducted supportive supervision to the nutrition sites (stabilization center and OutPatient Therapeutic Programme center) and on job training to the nutrition staff running the OTP on Mid Upper Arm Circumference (MUAC) screening of children aged 6-59 months for acute malnutrition and counselling of mothers on MIYCN in Pibor.

Performance of the Integrated Disease Surveillance and Response (IDSR)

- In week 40, 2020 IDSR reporting completeness was 80% and timeliness was 80% at health facility level. EWARN reporting completeness and timeliness were 86%.
- Of the 90 alerts in week 40, 2020; 73 percent were verified 1 percent were risk assessed and zero percent required a response. Malaria (32), AWD (20), bloody diarrhea (13) were the most frequent alerts in week 40, 2020.
- Malaria, Acute Respiratory Illnesses and Acute Bloody Diarrhea remain the top cause of morbidity in all Protection of Civilian Sites (Juba, Bentiu, Malakal, Wau and Bor).

Disease Outbreaks

Polio Virus Outbreak

- On 4 September 2020, South Sudan received a notification from Ugandan Virus Research Institute about the isolation of Polio Virus Type 2 (PV2) from 3 AFP samples, with the sequencing result received on 17 September confirmed cVDPV2 in two cases in Jur Rivers County, Western Bahr el Ghazal State and one case in Tonj North County, Warrap State.
- An additional 12 PV2 cases were reported between 5 to 15 October in four states: Warrap State 4

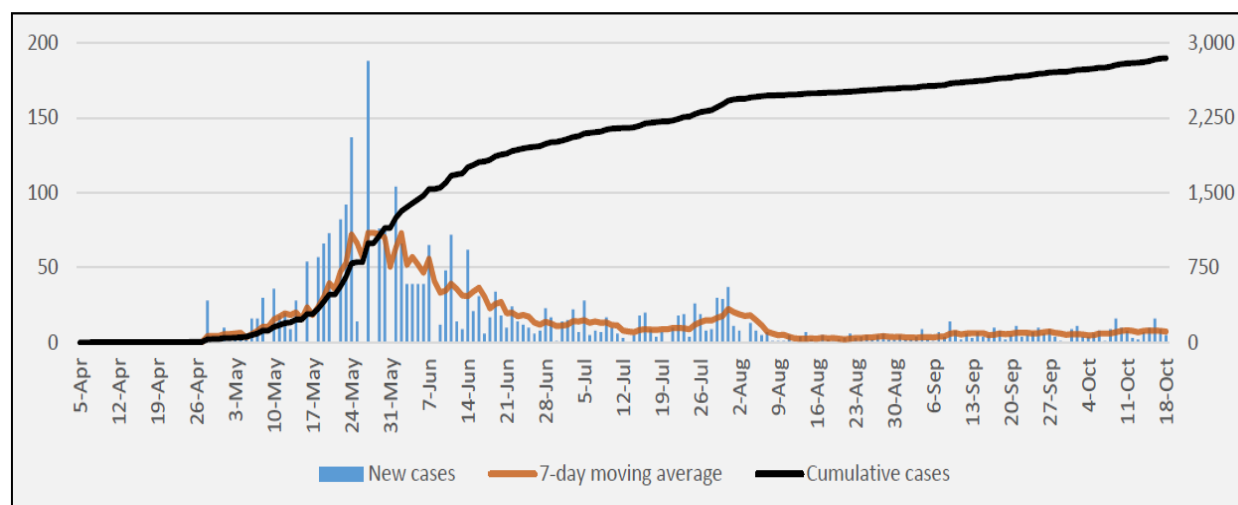
cases, (1 in Tonj North and 3 in Gogrial West), Western Bahr El Ghazal state 5 cases: (3 in Jur river and 2 in Wau), Northern Bahr El Ghazal State (1 case in Aweil West) and Lakes State (1 case in Cubeit); Eastern Equatoria state 1 case (1 case in Torit).

- The date of onset for the first cases was on 11 June 2020, while the onset for the most recent case was on 13 September, 2020.

Coronavirus disease (COVID-19) Outbreak in South Sudan as of 18 October 2020

- A cumulative total of 2 847 cases have been confirmed and 55 deaths have been recorded, with case fatality rate (CFR) of 1.9 percent including 196 imported cases as of 18 October 2020.
- One case is currently isolated in health facilities in the Country; and the National IDU has 99% percent bed occupancy available.
- 2 655 cases have been discharged to date.
- 135 Health Care Workers have been infected since the beginning of the outbreak, with one death.
- 9 152 cumulative contacts have been registered, of which 8 835 have completed the 14-day quarantine. Currently, 317 contacts are being followed, of these 92.1 percent (n=292) contacts were reached.
- 722 contacts have converted to cases to date; accounting for 25.3 percent of all confirmed cases.
- Cumulatively 36 740 laboratory tests have been performed with 7.7 percent positivity rate.
- There is cumulative total of 1 373 alerts of which 86.5 percent (n=1 187) have been verified and sampled; Most alerts have come from Central Equatorial State (75.1 percent), Eastern Equatoria State (4.4 percent); Upper Nile State (3.2 percent) and the remaining 17.3 percent are from the other States and Administrative Areas.
- As of 18 October, 24 Counties (30.0 percent) out of 80 Counties of the ten States of South Sudan are affected.

Figure 1: New and cumulative confirmed COVID cases by notification date as of 18 October 2020



For more information on the COVID-19 outbreak and public health response measures, please refer to the national weekly situation update. <http://moh.gov.ss/covid-19.php>

Measles Outbreak in Pibor

- Measles in Pibor as six cases were reported in week 40, makes a total of 132 since beginning of 2020. 81 percent of the cases are less than 5 years of age and most affected areas are Lekuangle and Pibor town.
- Plans are underway to conduct Measles follow up Campaign as Pibor was missed out during the phase 2 due to insecurity.

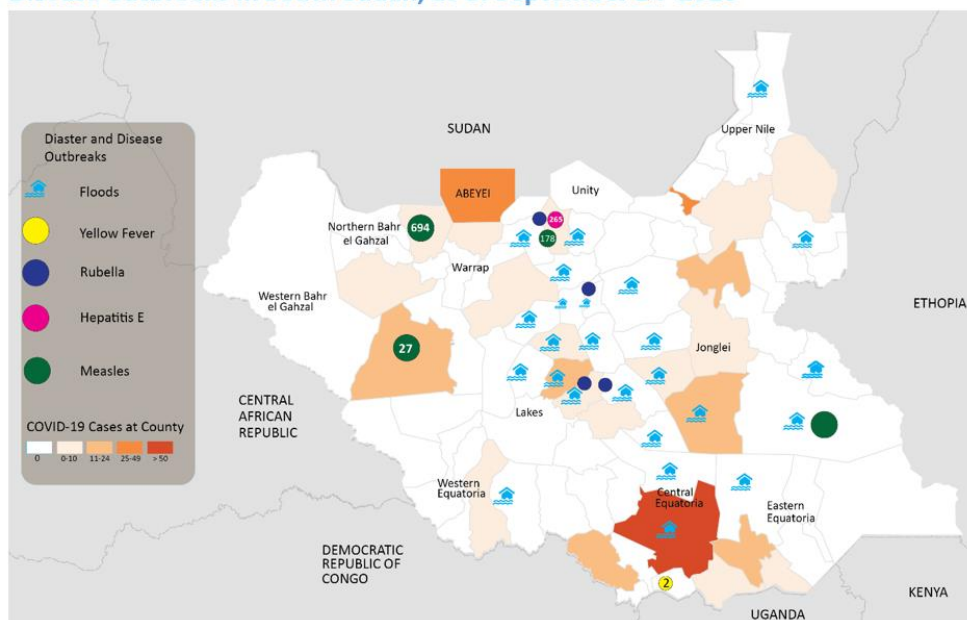
Hepatitis E Virus in Bentiu POC

- The persistent transmission of HEV in Bentiu POC continues with 409 cases since beginning of 2019. 72% of cases are in children aged 15+years old, male 50%, female 50%. Sector 3, sector 5 and 1 are the most affected. There are no new cases reported in week 39, 2020.

Yellow Fever campaign in Kajo Keji

- The Ministry of Health with support from WHO and partners will be implementing a reactive yellow fever vaccination campaign in Kajo Keji County in the third week of October 2020. A multi-disciplinary and multiagency team of experts from the national and state ministries of health, WHO, UNICEF, and other implementing partners are working to ensure that all required preparations are initiated to ensure timely and effective implementation of the emergency yellow fever campaign after approval by the Internation Coordinating Group (ICG) on vaccine provision.
- Two yellow fever cases were confirmed in Kajo Keji on 28 March 2020 following an investigation by the RRTs. The country secured 103 230 doses of yellow fever vaccines for an emergency campaign.
- The Teams have arrived Kajo-keji and campaign will kick off on the 23 October 2020 and will target at least 93,000 persons aged 9monts to 60 years.

Disease outbreaks in South Sudan, as of September 24 2020



For more details, visit: <https://www.afro.who.int/publications/south-sudan-weekly-disease-surveillance-bulletin-2020>

Suspected Viral Haemorrhagic Fever in Sir Malaga Village Raja County

- On Saturday (3 October 2020) a woman in Sir Malaga town who went to the market, returned with symptoms of bleeding from the nose and mouth and died shortly. On the following day two members of family members presented with similar symptoms including fever and died as well. This triggered an alarm which prompted the army base in Sir Malaga to report to Raja. All the deceased were buried.
- On 5 October 2020 National Rapid Response Teams accompanied by WHO Epidemiologist were deployed to the village. They collected three samples from suspected cases and listed 8 contacts. All 3 samples tested negative for VHF profiles in National Public Health Laboratories in Juba and And samples were shipped to Uganda for further analysis. Follow-up test results from UVRI show that the samples tested PCR negative for Ebola, Marburg, Crimean Congo Hemorrhagic Fever, Rift Valley Fever, and Yellow Fever. Further arboviral testing is underway.
- Limited resources to cover all the affected counties.
- Weak coordination mechanisms at the sub-national level.
- Insecurity and inaccessibility in conflict-affected counties.
- Huge operational costs measured against available donor funds
- Inadequate human resources for health at subnational levels

Operational gaps and challenges

Resource Mobilization

Key Donors

Name of appeal	Required US \$\$	Secured in US \$	A gap in US \$
WHE Operations	22 million	2 million	20 million

WHO Country Office of South Sudan registers appreciation for the great support provided by all our donors. The donors are listed in alphabetical order.

- Central Emergency Response Fund (CERF)
- European Union Humanitarian Aid (ECHO)
- Global Alliance for Vaccine Initiative (GAVI)
- United States Agency for International Development (USAID)
- The Government of Japan
- The Department for International Development (DFID)
- South Sudan Humanitarian Fund (SSHF)
- World bank

Editorial Team: Dr Joseph Wamala, Dr Diba Dulacha, Dr Chol Yur, Ms Sheila Baya, Ms Jemila M. Ebrahim and Mr Atem John

For more information, please contact

Dr Olushayo OLU
WHO Country Representative
Email: oluo@who.int

Dr Guracha ARGATA
WHO Health Emergency Team Lead
Email: guyoa@who.int

Mr Boniface Ambani
Health Information Management Team Lead
Email: ambanib@who.int