

South Sudan

Integrated Disease surveillance and response (IDSR)

**Epidemiological Bulletin Week 44 of 2020 (October 26-
November 01)**



World Health
Organization
South Sudan



- In week 44, 2020 IDSR reporting completeness was 93% and timeliness was 67% at health facility level. EWARN reporting both completeness and timeliness were 79%
- Of the 110 alerts in week 44, 2020; 81% were verified 1% were risk assessed and 0% required a response. Malaria (40), AWD (29), ARI (9), measles (3) and bloody diarrhea (19) were the most frequent alerts in week 44, 2020
- Malaria remains the top cause of morbidity and accounted for 102,919 cases (66.2% of OPD cases)
- A total of 1,439 COVID-19 alerts have been investigated with 1,250 (86.9%) being verified. Total of 2,905 COVID-19 confirmed cases and 58 deaths, CFR of 2.0%
- Other hazards include suspects VHF in Nzara and Yambio; floods in 39 counties; malaria in 10 counties; measles in Pibor; HEV in Bentiu PoC; suspected measles outbreak in Ibba and yellow fever in Kajo-keji

SURVEILLANCE PERFORMANCE



For the Integrated Disease Surveillance (IDSR)
network and Early warning alert and response
network (EWARN)



IDSR timeliness & completeness performance at county level for week 44 of 20202



Completeness States Ranking	States	Supporting Partners	Total No. of Functional Health Facilities in the State	No. of HF's Reported on Time	Timeliness Percentage	No. of HF's Reported regardless of Time	Completeness Percentage
1st	CES	HLSS, SSUHA, Healthnet TPO, IHO,GOAL,TRI-SS,THESO	119	119	100%	119	100%
2nd	WBGZ	Cordaid, Healthnet TPO, CARE International,IOM	75	63	84%	75	100%
3rd	WES	AMREF, World Vision, CUAMM, CDTY, OPEN	213	65	31%	212	100%
4th	Lakes	Doctors with Africa (CUAMM), LIVEWELL	113	75	66%	112	99%
5th	Warrap	GOAL, CCM, WVI, Malaria Consortium, UNKEA, Save the Children, MSF	119	106	89%	112	94%
6th	NBGZ	Malaria Consortium, Healthnet TPO, IRC, CEDS, IHO	131	112	85%	123	94%
7th	Unity	Cordaid, UNIDOR, IRC, CHADO, CARE International, CRADA, CASS	88	62	70%	81	92%
8th	EES	Cordaid, HLSS, CCM	142	87	61%	127	89%
9th	Upper Nile	Cordaid, WVI, RI, IMC, NIDO, UNKEA, MC, SSAID,Samaritans Purse	120	69	58%	100	83%
10th	Jonglei	Nile Hope, MDM, JDF, Livewell, CMD, HFO, EDA, CRADA, Malaria Consortium, CMA	107	65	61%	79	74%
	South Sudan		1227	823	67%	1140	93%

KEY

	<60%	Poor
	61%-79%	Fair
	80%-99%	Good
	100%	Excellent

The timeliness of IDSR reporting (supported by EWARS mobile) at health facility level was 75% and completeness was 94%. All states were above the target of 80% with highest reporting rate in CES, WBGZ and WES

IDSR timeliness & completeness performance at county level for week 44 of 2020 (1)



STATE	COUNTY	SUPPORTING PARTNER	Total No. of Functional Health Facilities in the County	No. of HFs Reported on Time	Timeliness Percentage	No. of HFs Reported regardless of time	Completeness Percentage
CES	Terekaka	HealthNetTPO	20	20	100%	20	100%
Lakes	Cueibet	Doctors with Africa (CUAMM)	15	15	100%	15	100%
Lakes	Rumbek North	Doctors with Africa (CUAMM)	7	7	100%	7	100%
Lakes	Wulu	Doctors with Africa (CUAMM)	14	14	100%	14	100%
WBGZ	Wau	Cordaid	28	28	100%	28	100%
CES	Kajo Keji	SSUHA,GOAL, TRI-SS	17	17	100%	17	100%
NBGZ	Aweil South	Malaria Consortium(MC),IHO	9	8	89%	9	100%
NBGZ	Aweil East	IRC,TADO	36	32	89%	36	100%
NBGZ	Aweil Centre	Malaria Consortium(MC)	15	13	87%	15	100%
Lakes	Rumbek East	Doctors with Africa (CUAMM)	24	20	83%	24	100%
WBGZ	Jur River	Cordaid	35	23	66%	35	100%
Lakes	Yirol East	Doctors with Africa (CUAMM),LIVEWELL	11	1	9%	11	100%
Lakes	Awerial	Doctors with Africa (CUAMM)	7	0	0%	7	100%
Lakes	Yirol West	Doctors with Africa (CUAMM)	12	0	0%	12	100%
CES	Juba	HLSS	46	45	98%	45	98%
Lakes	Rumbek Centre	Doctors with Africa (CUAMM)	23	18	78%	22	96%
CES	Yei	SSUHA	17	15	88%	16	94%
NBGZ	Aweil West	HealthNetTPO	37	30	81%	34	92%
NBGZ	Aweil North	HealthNetTPO,IHO	33	29	88%	29	88%
CES	Lainya	SSUHA	16	14	88%	14	88%
WBGZ	Raja	HealthNetTPO	14	12	86%	12	86%
CES	Morobo	SSUHA,THESO	5	4	80%	4	80%

STATE	COUNTY	SUPPORTING PARTNER	Total No. of Functional Health Facilities in the County	No. of HFs Reported on Time	Timeliness Percentage	No. of HFs Reported regardless of time	Completeness Percentage
Unity	Panyijar	IRC	15	15	100%	15	100%
Unity	Mayom	CASS	9	9	100%	9	100%
Unity	Abiemnhom	Cordaid	4	3	75%	4	100%
Unity	Leer	UNIDOR	11	8	73%	11	100%
WES	Ezo	World Vision International	27	15	56%	27	100%
WES	Ibba	AMREF	11	5	45%	11	100%
WES	Tambura	World Vision International	26	11	42%	26	100%
Unity	Guit	CHADO	7	2	29%	7	100%
WES	Mvolo	CUAMM	11	1	9%	11	100%
WES	Nzara	World Vision International	20	1	5%	20	100%
WES	Nagero	World Vision International	10	0	0%	10	100%
WES	Mundri West	CUAMM	21	0	0%	21	100%
WES	Maridi	AMREF	26	0	0%	26	100%
WES	Mundri East	CUAMM	19	0	0%	19	100%
WES	Yambio	World Vision International	42	32	76%	41	98%
Unity	Mayendit	CASS	12	4	33%	11	92%
Unity	Koch	CRADA,IRC.	5	4	80%	4	80%
Unity	Rubkona	Cordaid,IRC,IOM,M SF	15	12	80%	12	80%
Unity	Pariang	CARE International	11	5	45%	8	73%

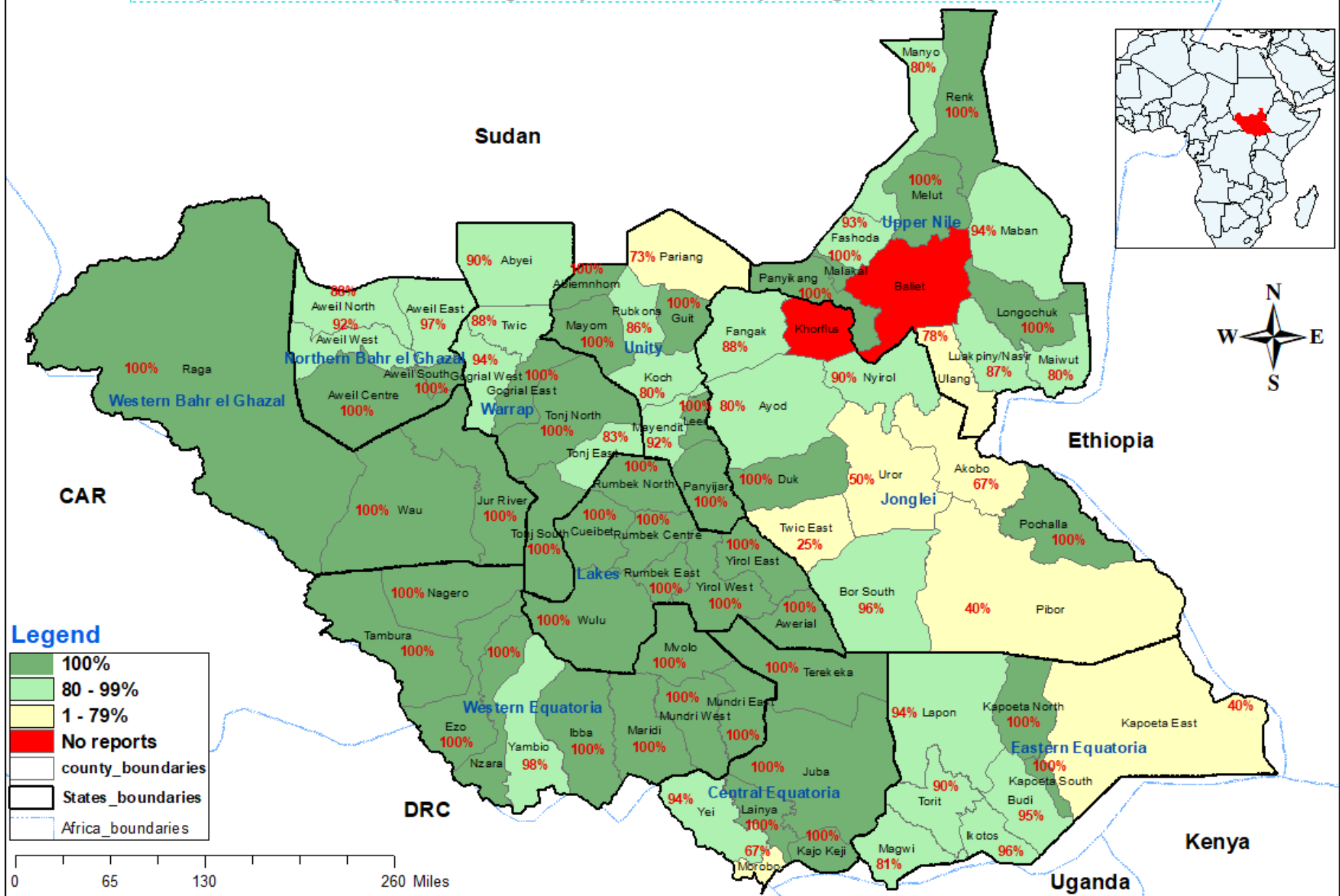
IDSR timeliness & completeness performance at county level for week 44 of 2020 (2)



STATE	COUNTY	SUPPORTING PARTNER	Total No. of Functional Health Facilities in the County	No. of HFs Reported on Time	Timeliness Percentage	No. of HFs Reported regardless of time	Completeness Percentage
Jonglei	Pochalla	LIVEWELL	7	7	100%	7	100%
EES	Kapoeta South	CCM	10	0	0%	10	100%
Jonglei	Fangak	CMD,HFO	16	15	94%	15	94%
EES	Budi	Cordaid	21	17	81%	20	95%
EES	Ikotos	HLSS	27	21	78%	26	96%
EES	Lopa Lafon	HLSS	18	14	78%	17	94%
EES	Kapoeta North	CCM	16	0	0%	15	94%
Jonglei	Nyiroi	CMA,Malaria Consortium	10	7	70%	9	90%
EES	Torit	Cordaid	20	14	70%	18	90%
EES	Magwi	HLSS	22	17	77%	17	77%
Jonglei	Ayod	CMD,EDA	15	11	73%	11	73%
Jonglei	Duk	MDM + JDF	15	0	0%	11	73%
Jonglei	Pibor	LIVEWELL,CRADA	3	2	67%	2	67%
Jonglei	Bor	MDM + JDF	35	19	54%	19	54%
EES	Kapoeta East	CCM	12	4	33%	4	33%
Jonglei	Akobo	NILE HOPE	8	2	25%	2	25%
Jonglei	Twic East	MDM + JDF	11	2	18%	2	18%
Jonglei	Uror	Nile Hope,Malaria Consortium	8	0	0%	1	13%
Jonglei	Canal Pigi	IMC	11	0	0%	0	0%

STATE	COUNTY	SUPPORTING PARTNER	Total No. of Functional Health Facilities in the County	No. of HFs Reported on Time	Timeliness Percentage	No. of HFs Reported regardless of time	Completeness Percentage
Warrap	Gogrial East	GOAL	15	15	100%	15	100%
Upper Nile	Renk	WVI + RI	13	13	100%	13	100%
Warrap	Tonj South	CCM	12	12	100%	12	100%
Warrap	Tonj North	CCM	14	13	93%	14	100%
Upper Nile	Melut	WVI + RI	8	8	100%	8	100%
Upper Nile	Panyikang	IMC	4	4	100%	4	100%
Upper Nile	Longechuk	RI	9	0	0%	9	100%
Warrap	Gogrial West	GOAL	31	29	94%	29	94%
Upper Nile	Maban	WVI,RI,Samaritans Purse	17	11	65%	16	94%
Warrap	Abyei	AAA,Save the Children,MSF	10	8	80%	9	90%
Upper Nile	Luakpiny Nasir	UNKEA,RI	15	12	80%	13	87%
Upper Nile	Makal	IMC	7	4	57%	6	86%
Warrap	Twic	GOAL	26	18	69%	22	85%
Warrap	Tonj East	CCM	12	10	83%	10	83%
Upper Nile	Manyo	CORDAID	10	2	20%	8	80%
Upper Nile	Maiwut	RI	5	0	0%	4	80%
Upper Nile	Akoka	IMC	5	4	80%	4	80%
Upper Nile	Fashoda	CORDAID	13	6	46%	9	69%
Upper Nile	Ulang	UNKEA,RI	14	5	36%	6	43%
Upper Nile	Baliet	IMC	4	0	0%	0	0%

IDSR performance Map showing completeness of reporting by counties in week 44, 2020.



Disclaimer: The boundaries and names shown and the designations used on this map do not imply the expression of any opinion whatsoever on the part of the World Health Organization concerning the legal status of any country, territory, city or area or of its authorities, or concerning the delimitation of its frontiers or boundaries.



Surveillance: EWARS performance indicator by partner for week 44 of 2020

Partner	HFs	Reporting		Performance	
PARTER	# OF SITES	# of reports received on Time	No. of HFs Reported regardless of time	Timeliness	Completeness
IRC	1	1	1	100%	100%
HAA	2	2	2	100%	100%
RHS	1	1	1	100%	100%
Medicair	2	2	2	100%	100%
UNIDOR	2	2	2	100%	100%
GOAL	2	2	2	100%	100%
CMD	1	1	1	100%	100%
MSF-E	6	6	6	100%	100%
Medair	2	2	2	100%	100%
TRI-SS	2	2	2	100%	100%
World Relief	2	2	2	100%	100%
IMC	6	6	6	100%	100%
IOM	12	10	10	83%	83%
MSF-H	5	4	4	80%	80%
HFO	2	1	1	50%	50%
UNH	2	1	1	50%	50%
IMA	9	3	3	33%	33%
SMC	2	0	0	0%	0%
TOTAL	61	48	48	79%	79%

Both completeness and timeliness were 79% for weekly reporting in week 44, 2020 for partner-supported clinics serving IDP sites.

EVENT-BASED SURVEILLANCE



Alert management including detection; reporting;
verification; risk assessment; & risk
characterization





State	Acute jaundice syndrome	Acute Respiratory Infections (ARI)	Acute Watery Diarrhoea	AFP	Bloody Diarrhoea	Malaria (Confirmed)	Measles	Neonatal Tetanus	Meningitis	Covid-19	Total alerts
CES		3	7		1	5					16
EES	1	2	3		6	4					16
NBGZ				1							1
Unity	1							1		2	4
Upper Nile		3	3		3	3					12
Warrap	1		3	1	3	6	1			1	16
WBGZ			5		3	6					14
WES		1	8		3	16	2		1		31
Total alerts	3	9	29	2	19	40	3	1	1	3	110

During this week:

9 ARI alert: 2 under verification and 7 are investigated

29 AWD alert: 15 are undergoing verification and 14 are investigated

17 ABD alert: 6 under going Investigation and 13 are investigated

40 Malaria alerts: 2 are under verification and 38 are investigated

1 Neonatal Tetanus alert: investigated

1 Meningitis alert: investigated

3 Covid-19 alert: 1 under verification and 2 investigated

3 AJS alert: investigated

3 Measles alert: investigated

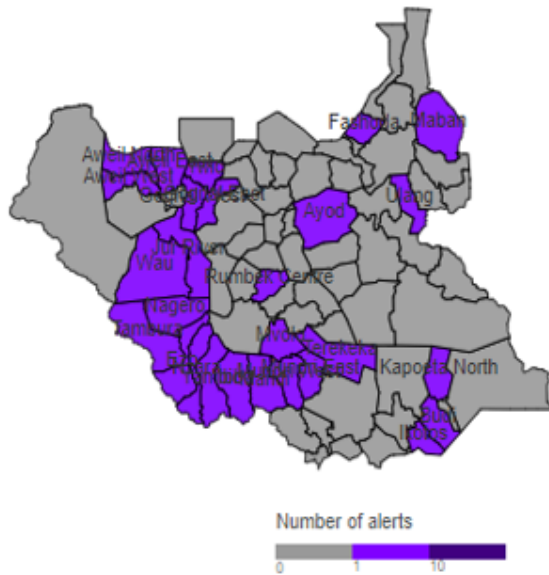
2 AFP alert: all investigated



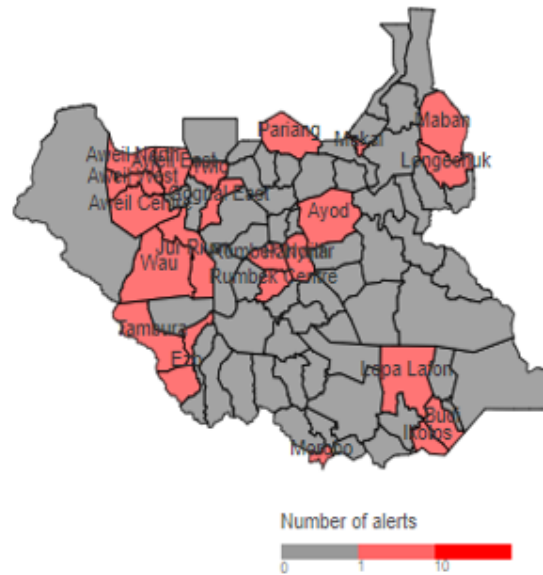
Alert: Map of key disease alerts by county of week 44 of 2020



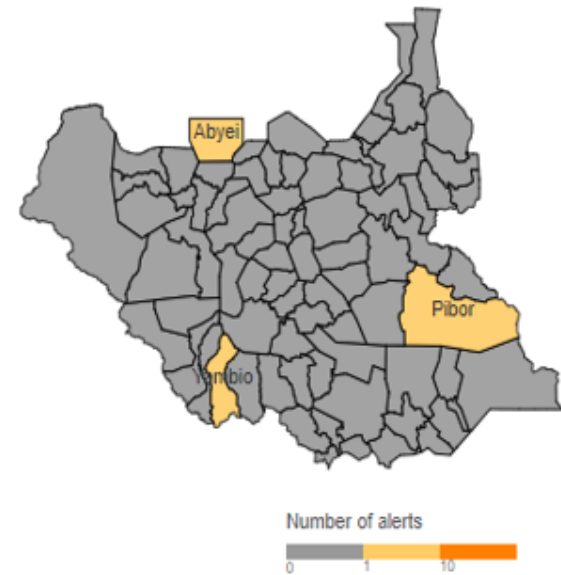
Map 2a | Malaria (W44 2020)



Map 2b | Bloody diarrhoea (W44 2020)



Map 2c | Measles (W44 2020)



W44	Cumulative (2020)	
0	13	Low risk
4	4	Medium risk
0	27	High risk
1	58	Very high risk

81%	81%	% verified
0%	0%	% auto-discarded
1%	1%	% risk assessed
1%	1%	% requiring a response

Alerts Reported (1):

VHF Alert in Nzara: 4 years old female child, a south Sudanese from Baakpara village of Nzara county. SRRT was activated, patient became sick on the **16th October 2020** with vomiting of blood, fever (by history) and right side neck swelling. On admission in Yambio hospital her body temperature was 36.5 degree Celsius, was put on amoxicillin syrup and paracetamol. She had been discharged. One blood sample was collected and send to Juba Results came out on 29th October negative for EVD and Marburg.

VHF Alert in Yambio; 58 years old male, a south Sudanese from Nangbingi/ Yambio county. The patient became sick on the **17th October 2020** and was transported to Yambio hospital and was admitted. Patients complained of vomiting blood; nose bleeding and watery diarrhea. On admission his body temperature was 36.8 degree Celsius. He also has no history of travel out of Yambio in recent time. RRT was activated, samples was collected and shipped to Juba for testing. Results came out on 29th October negative for EVD and Marburg.

Alerts Reported (2):

Suspected Cholera Alert in Raat/ Mauro : The closest IP there is CARE supporting Boma Hospital. Maruo is the closest place to Raat which is accessible by air, it is 6 hours from Jebel Boma if vehicles are available or one day walking. No more information available



Alert of AWD cases in Akoc Payam/ Twic County

Still under investigation, SRRT will travel there but the place is not accessible/ flooded and no network coverage. Its 3 days walk from Twic. Goal is the partner on ground. The report will be shared later once the team are back

SUSPECTED OUTBREAKS



Major suspected outbreaks in South Sudan in
2020



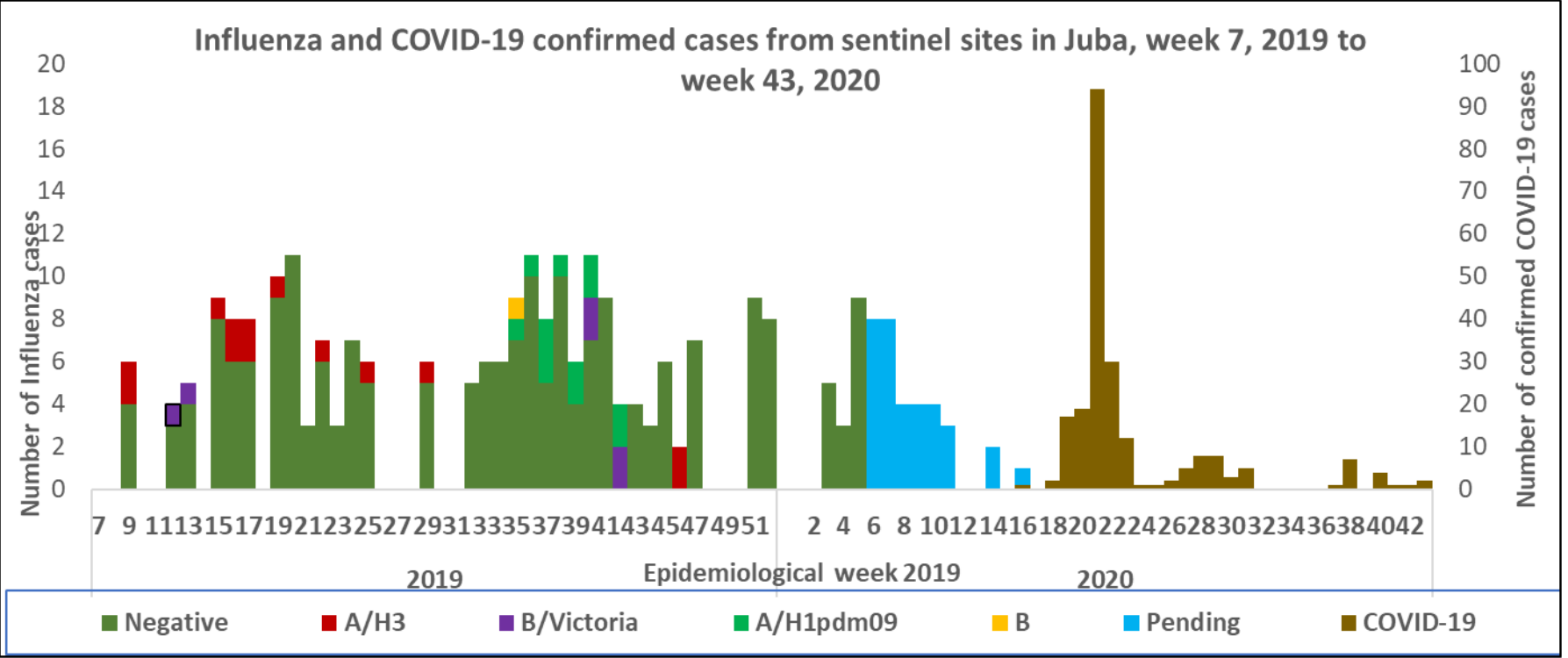


Malaria was the leading cause of morbidity and mortality, accounting for **66.2%** of all morbidities and **21.3%** of all mortalities this week.

There were **10 Counties** with malaria trends that exceeded the threshold (third quartile of trends for the period 2013-2017) and these include the following:

- 1. Aweil hub (Aweil East, Aweil West, Aweil North Aweil South)**
- 2. Kwajok hub (Gogrial East, Gogrial West)**
- 3. Wau hub (Wau)**
- 4. Bentiu hub (Rubkona)**
- 5. Yambio hub (Yambio)**
- 6. Juba hub (Juba)**

In the PoC sites; malaria is the top cause of morbidity in Bentiu (48%); Juba (54%), Bor (0%) and Wau (10%) PoCs, in Malakal PoC malaria accounts for (8%) of OPD consultations, respectively.



- In week 7, 2019, South Sudan started case-based surveillance for Influenza Like Illness (ILI) and Severe Acute Respiratory Infection (SARI) cases through systematic collection of epidemiological and virological information.
- In 2019, a total of 309 ILI/SARI samples have been collected and tested in UVRI 228 being negative; 6 positive for Influenza B (Victoria); 13 positive for Influenza A (H3); and 12 positive for Influenza A (H1)pdm09 and (50) samples are pending test results .
- There are currently 20 Covid-19 designated sentinel surveillance sites in Juba that are collecting epidemiological data and samples from ILI/SARI cases. A total of 3959 samples have been collected in 2020 with 222 (5.6%) being positive for COVID-19 in Juba. These sentinel samples have not been tested for influenza in 2020

ACTIVE OUTBREAKS AND PUBLIC HEALTH EVENTS



Brief epidemiological description and public health response for active outbreaks and public health events

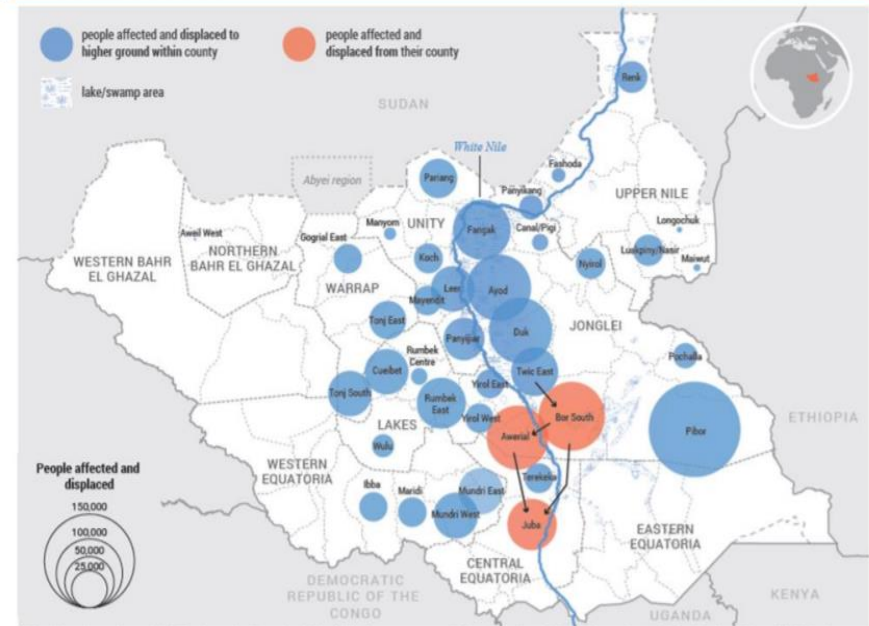




Flooding, South Sudan, week 44, 2020

- Monitoring of flood forecast continues across the country, from October to December 2020, the forecast has shown wetter than usual weather in the northwest and southeast of the country and drier than usual weather in the Western Equatoria.
- The number of the affected population as of now is estimated to be over 856,000 individuals. The number of affected Counties have jumped to 40 and no new flooding event reported.

Maps: People affected and displaced by flood.



Laboratory Results October 2020

County	Date of sample collection	Date sample received in the Lab	Lab Results
Lainya	20/10/2020	22/10/2020	Measles & Rubella IgM Negative
Maridi	14/10/2020	22/10/2020	Measles IgM Positive
Ibba	7/10/2020	22/10/2020	Measles IgM Positive
Ibba	7/10/2020	22/10/2020	Measles & Rubella IgM Negative
Ibba	7/10/2020	22/10/2020	Measles IgM Positive
Wau	7/10/2020	22/10/2020	Measles & Rubella IgM Negative
Tambura	18/10/2020	22/10/2020	Measles & Rubella IgM Negative
Tambura	7/10/2020	22/10/2020	Measles & Rubella IgM Negative
Tambura	7/10/2020	22/10/2020	Measles & Rubella IgM Negative
Tambura	20/10/2020	22/10/2020	Measles & Rubella IgM Negative





Aetiological agent	Location (county)	Date first reported	New cases since last bulletin	Cumulative cases to date (attack rate %)	Interventions			
					Case management	Vaccination	Health promotion	WASH
Ongoing epidemics								
Hepatitis E	Bentiu PoC	03/01/2018	3	409 (0.007)	Yes	No	Yes	Yes
Measles	Bentiu PoC	24/04/2019	NR	482 (0.006)	Yes	Yes	Yes	N/A
Measles	Pibor	27/1/2020	6	132 (0.045)	Yes	Yes	Yes	N/A





- Measles outbreaks confirmed in 2020

- 7 counties – Tonj East, Magwi, Bor, Kapoeta East, Tonj South, Wau and Pibor

- Locations with ongoing measles transmission

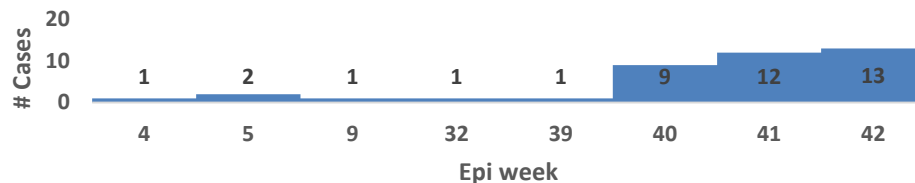
- Pibor County

Suspected measles outbreak in Ibba County, EES

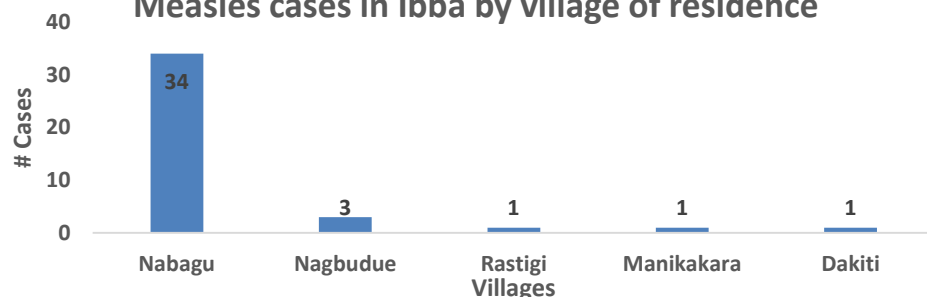


Suspected Measles Outbreak in Ibba

Measles Cases in Ibba from week 4 to week 42 of 2020



Measles cases in Ibba by village of residence



Background and descriptive epidemiology

- Measles transmission has persisted in Ibba county despite of the mass vaccination, and the follow up campaign was completed for the two counties – the coverage was 99%
- Suspected measles cases were reported and two samples tested measles IgM +e.
- 13 cases were reported in week 42, makes a total of 40 cases since beginning of 2020
- 30% of the cases are less than 5 years of age
- 40% are female and 60% male
- Most affected areas are Nabagu and Nagbudue

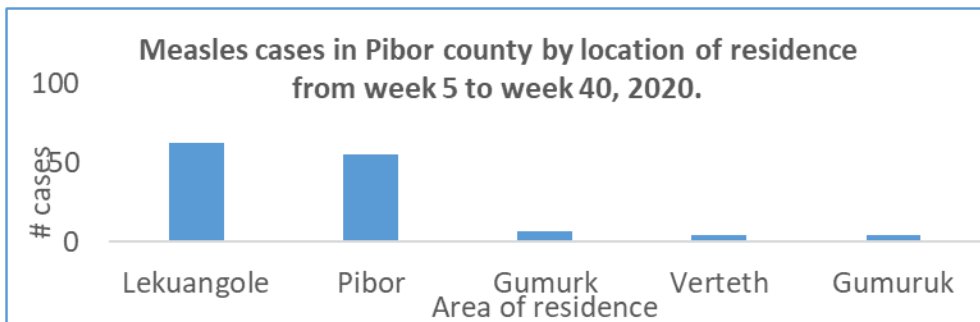
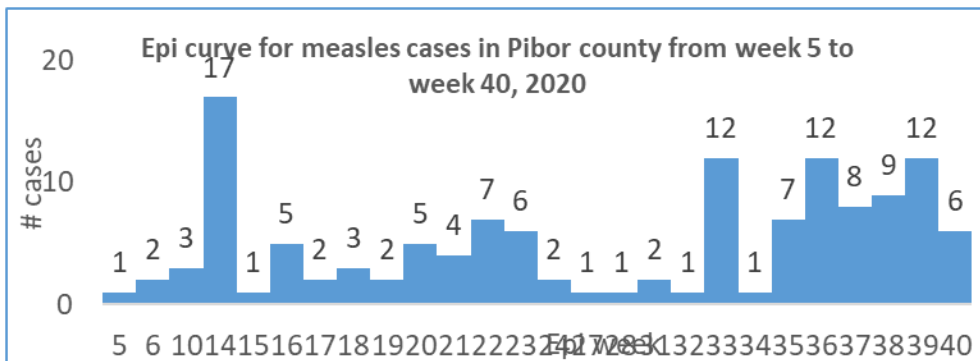
Response Actions:

- Mobilize local health facilities; partners; leaders; and communities to strengthen routine immunization in the area.
- Plan to deploy the state RRT along with the state MoH and WHO EPI officer to conduct detailed investigation of these cases – including line listing; sample collection; status of routine vaccination services in the location.

Age group	Cases	Percentage	CUM. %
0 - 4 Years	12	30%	30%
5 - 9 Years	11	28%	58%
10 - 14 Years	9	23%	80%
15 + Years	8	20%	100%
Grand Total	40	100%	



Confirmed Measles Outbreak in Pibor



Age Group	Cases	Percentage	% Cum.
1 - 4 Years	107	81%	81%
5 - 9 Years	19	14%	95%
15+ Years	4	3%	98%
10 - 14 Years	2	2%	100%
Grand Total	132	100%	

Background and descriptive epidemiology

- Measles transmission has persisted in Pibor county despite of the vaccination campaign conducted in February and March and October, 2019
- Suspected measles cases were reported from Pibor; five sample were send to Juba and tested measles IgM +e.
- 6 cases were reported in week 40, makes a total of 132 since beginning of 2020
- 81% of the cases are less than 5 years of age
- 52% are female and 48% male
- Most affected areas are Lekuangle followed by Pibor town

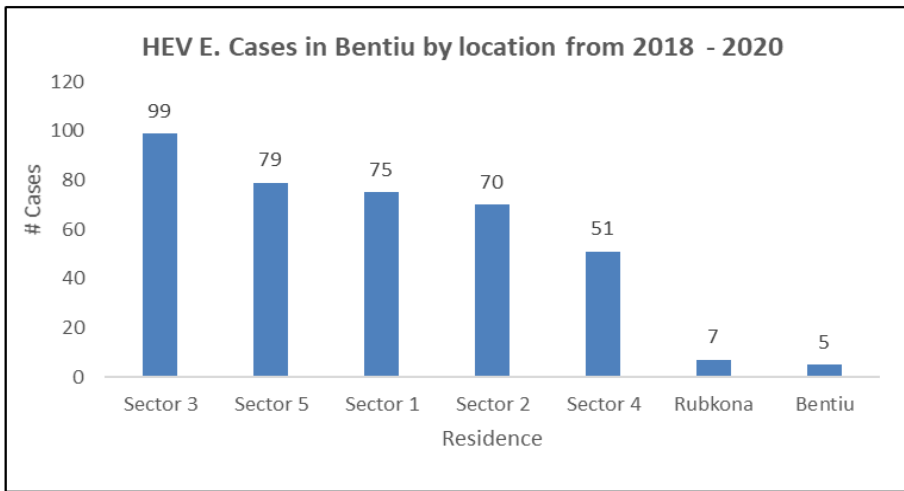
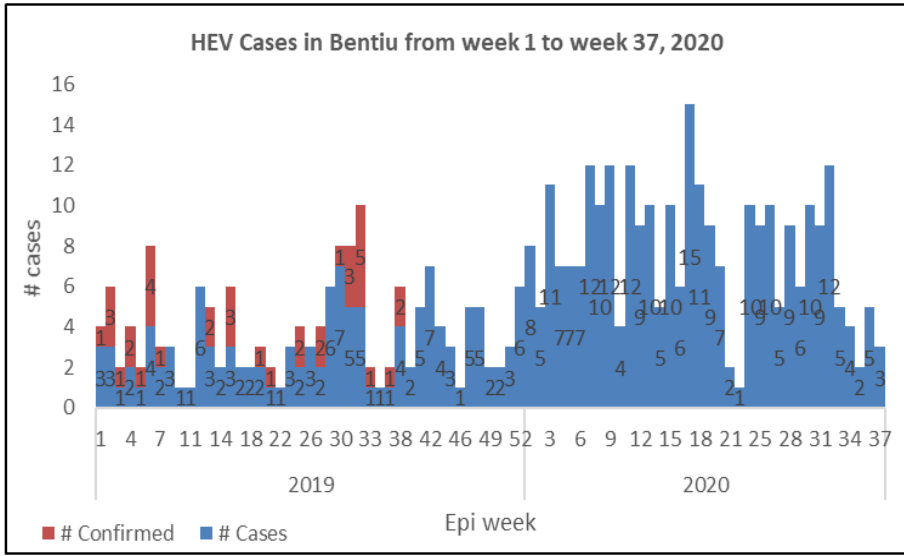
Response Actions:

- Partners to strengthen routine immunization and to continue to collect samples from suspect cases.
- Measles case management to continue
- Micro plan is under development, targeting Pibor town.





Hepatitis E, Bentiu PoC (1)



Descriptive epidemiology

- The persistent transmission of HEV in Bentiu PoC continues with 409 cases since beginning of 2019
- There were (3) new cases reported in week 37, 2020
- All the cases were managed as outpatient cases except for seven cases who were admitted
- 5 deaths reported in 2019 and 2020
- 50% are female and 50% are male.
- Age group less than 15 years had the most cases with (75%) cases.
- At risk of adverse outcomes when infected in the 3rd trimester of pregnancy
- Use of unsafe drinking water likely to be source of infection
- Up to week 37, 2020; there were 409 cases of HEV in Bentiu PoC including 4 deaths (CFR 0.01%)

Age-Group	Alive	Dead	Grand Total	Percentage	CFR	Cum. %2
1 - 4 Years	128	0	128	31%	0%	31%
10 - 14 Years	64	0	64	16%	0%	47%
15+ Years	99	3	102	25%	3%	72%
5 - 9 Years	113	2	115	28%	2%	100%
Grand Total	404	5	409	100%	0.01	



Recommendations

- Supportive case management guided by the HEV protocol is ongoing
- KEV messages on HEV prevention should continue within the community through HPs, CHWs and Kondial Radio
- With current COVID -19 Pandemic Outbreak, WASH partners to increase the coverage of hand washing facilities within the PoCs community.
- Other Wash intervention like increasing the access for clean water and improving the water storage in the affected individuals should be made urgently by distributing the water storage containers that will be the only way to mitigate this problem and stop the HEV outbreak.
- The WASH Cluster/HEV task force should engage in group discussion with Community leaders and woman group at water distribution points to understand their opinions on issue of Collapsing Jerrycans distribution.
- Monitoring the FRC levels at the taps stands in the different sectors, and the concentration of chlorination should maintain at 0.5-1mg/L as the point of collection





Aetiological agent	Location (county)	Date first reported	New cases since last bulletin	Cumulative cases to date (attack rate %)	Interventions			
					Case management	Vaccination	Health promotion	WASH
Controlled epidemics								
Measles	Juba	21/11/2019	NR	6(0.1667)	Yes	No	Yes	N/A
Measles	Tonj East	12/12/2019	NR	61(0.98)	yes	Yes	Yes	N/A
Measles	Bor	17/01/2020	NR	14(0.214)	yes	No	yes	N/A
Measles	Jebel Boma	10/12/2019	NR	96(0.063)	yes	No	Yes	N/A
Measles	Kapoeta East	18/01/2020	NR	16(0.625)	yes	No	Yes	N/A
Measles	Aweil East	29/12/2019	NR	664 (0.127)	Yes		No	Yes



EBOLA VIRUS DISEASE[EVD] PREPAREDNESS IN SOUTH SUDAN



Brief on the Ebola situation in DR Congo and updates on EVD preparedness in South Sudan



Equateur Outbreak (Reporting up to 30th October)

Cumulative figures for the outbreak

- 130 cases (119 confirmed, 11 probable)
- 55 deaths (42.3% CFR)
- 75 recoveries (57.7%)
- 42 affected health areas, 13 health zones;
- 39,985 vaccinated

- The last confirmed case was reported on 28th Sept. in Makanza HZ
- 6 confirmed cases in the community have been designated as survivors;
- All contacts have completed 21 day follow up;
- 30 suspected are currently being treated across 19 IU/ETCs.
- 32 patients received experimental therapies.

Highlights from past 21 days (20 -30 Oct):

- 0/13 affected HZs have reported a case in past 21 days,
 - 1/42 health areas have not reported a case in over 42 days;
 - 2 new probable cases validated in Lolanga Mampoko who died on the 24 July and 8 Aug
- Main Concerns:**
- Alert reporting remains low, decreasing in most HZs
 - No alerts reported from Bolomba district since 17 Oct

COVID-19 Updates

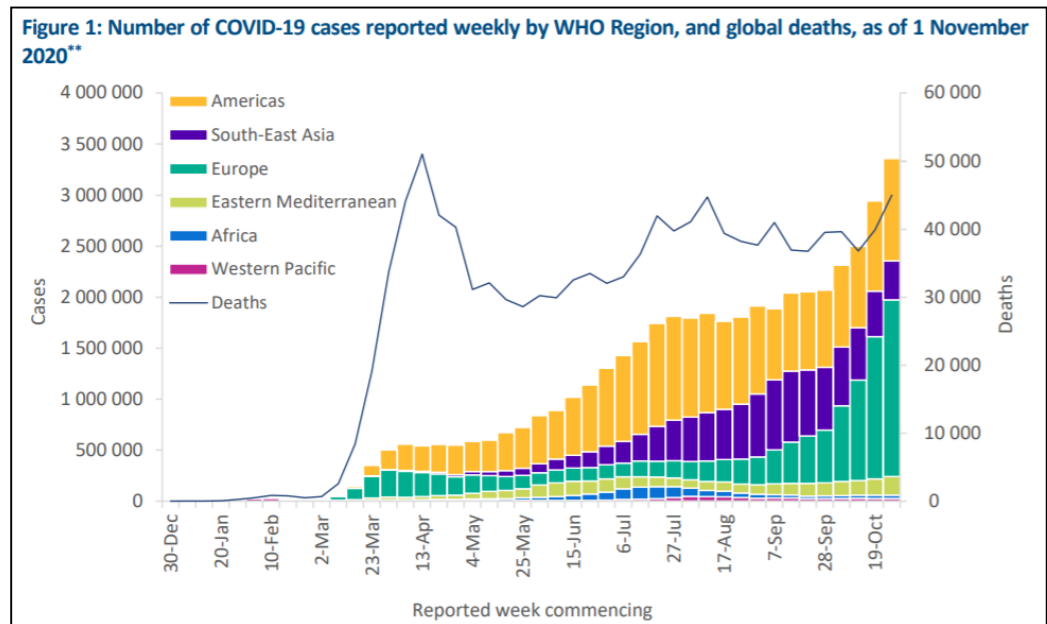


COVID-19 Virus Situation Summary



Situation update as of 1st November 2020

- The COVID-19 pandemic initial cases were detected in Wuhan China
- Globally >46 million cases (> 1.2 million deaths)
- Africa > 1 324 258 million cases (>29 785 deaths)



WHO: <https://www.who.int/health-topics/coronavirus>

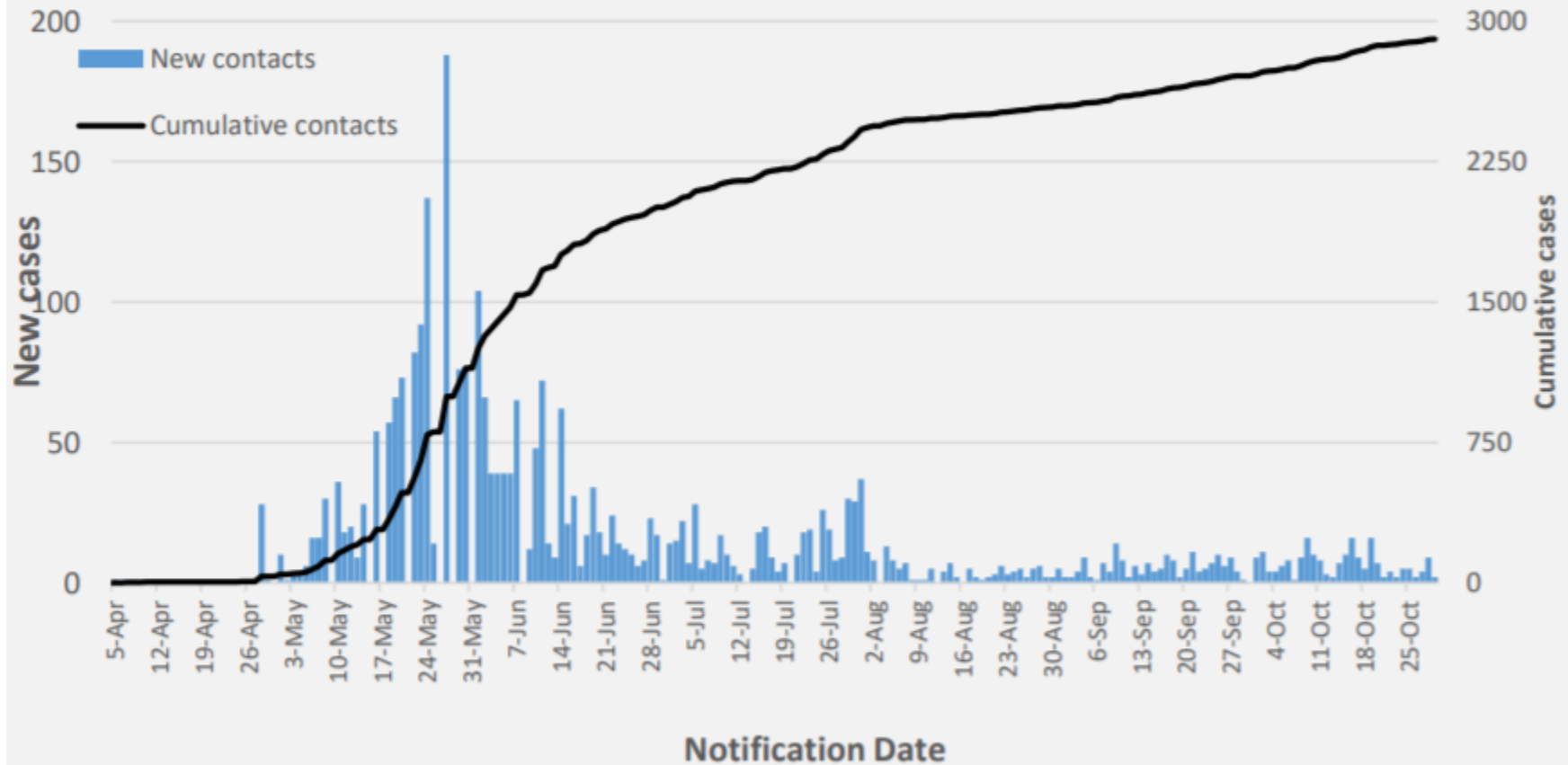


- 2,905 confirmed COVID-19 cases in South Sudan; 85% in Juba with 58 deaths and a case fatality rate (CFR) of 2.0%. Total 9,498 contacts identified, quarantined, & undergoing follow up
- Implementation of priorities; risk communication and community engagement; active case search and testing; quarantine for contacts; isolation of confirmed cases, infection prevention and control; and management of cases are currently underway
- The overall response currently led by the COVID-19 National level taskforce and the COVID-19 National Steering Committee



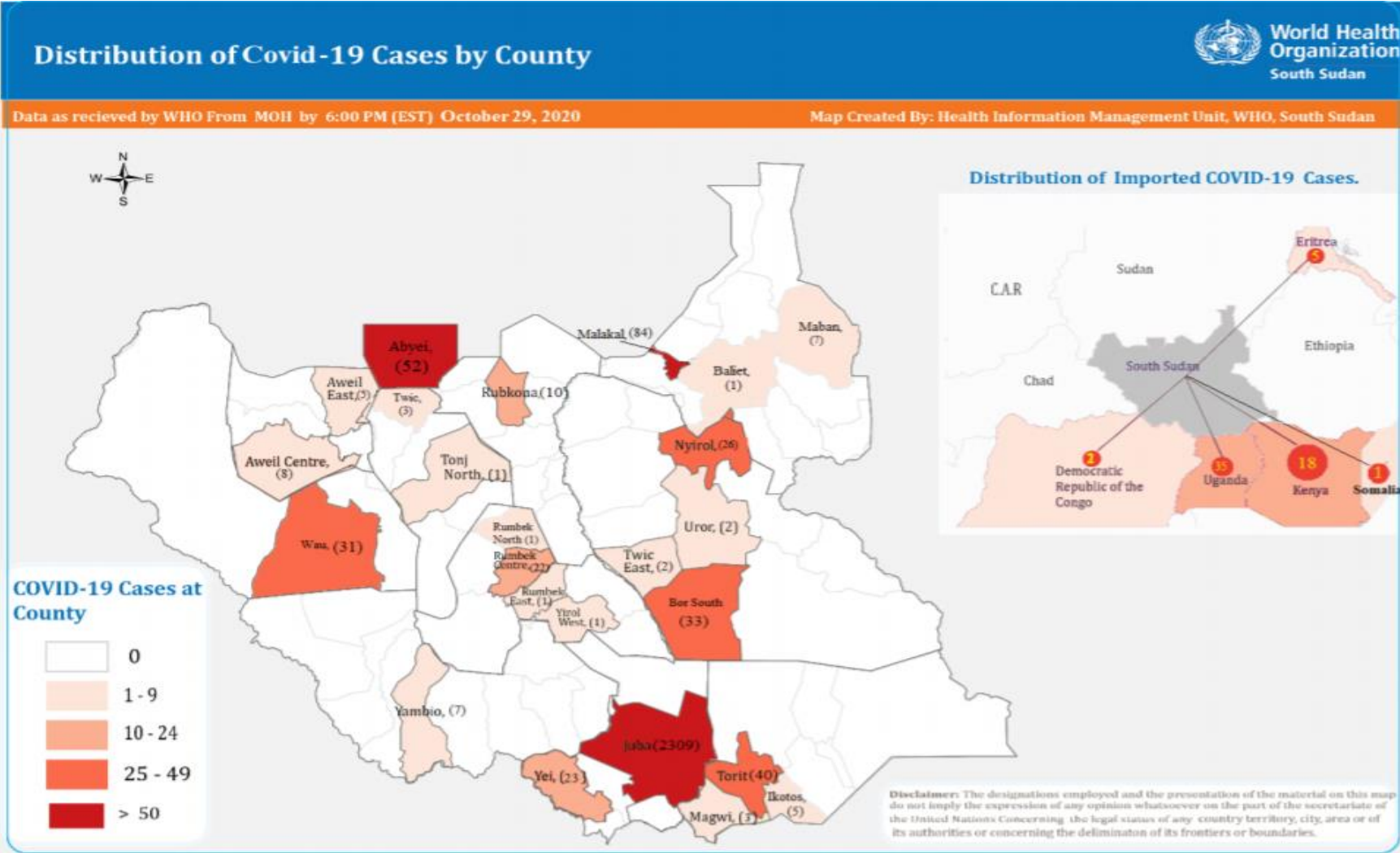


Figure 1. New and cumulative confirmed COVID-19 cases by notification date



COVID-19 cases increasing exponentially in the past few weeks

Distribution of COVID-19 cases in South Sudan



**Geographical information is available for 2 738 cases.*

The majority of the cases have been reported in Juba; while the rest have been imported (involving truckdrivers from the neighboring countries)

Overall Conclusions and Recommendations



Conclusion

- The overall IDSR and EWARN reporting performance in week 44, is above the target of 80%. All (9) states were above 80%
- 2,905 confirmed COVID-19 cases in South Sudan; 85% in Juba with 58 deaths (CFR of 2.0%). Total 9,498 contacts identified, quarantined, & undergoing follow up
- Cumulative total of COVID-19 alerts is 1,439, of these, 1,250 (86.9%) have been verified and samples were collected
- With seven outbreaks confirmed in 2020; measles remains the most frequent vaccine preventable disease
- There are ongoing measles outbreak in Bentiu PoC and Pibor county
- Given the COVID-19 pandemic, it is critical that measures are stepped up to contain its spread.



Recommendations

- All partners should support CHDs & State Ministries of Health to undertake IDSR/EWARN reporting
- All health facilities should report, and conduct case-based investigation of suspect measles cases and routine measles immunization should be strengthened in all counties
- Strengthen capacities for COVID-19 containment through identifying and testing suspect cases, isolating confirmed cases, and quarantining contacts



Thanks to the State Surveillance Officers, County Surveillance Officers and Health Facility in-charges for sharing the weekly IDSR data

Thanks to all partners for supporting IDSR weekly reporting and sharing the line lists

To access the IDSR bulletins for 2020 use the link below:

<https://www.afro.who.int/publications/south-sudan-weekly-disease-surveillance-bulletin-2020>



This bulletin is produced by the Ministry of Health with Technical support from WHO

For more help and support, please contact:

Dr. Pinyi Nyimol Mawien
Director General Preventive Health Services
Ministry of Health
Republic of South Sudan
Telephone: +211916285676

Mr. Mathew Tut M. Kol
Director, Emergency Preparedness and Response
Ministry of Health, RSS
Tell: +211916010382, +211922202028
Emails: tut1988@yahoo.com, greensouth2020@gmail.com
Skype: mathew19885

IDSR Bulletin Editorial Team

1. Mr. Ajak Ater, MoH - Email: ajakater014@gmail.com
2. Ms. Sheila Baya, WHO - Email: bayas@who.int
3. Mr. Robert Lasu Martin, WHO - Email: lasur@who.int
4. Mrs. Rose Dagama, WHO - Email: dagamaa@who.int
5. Dr. Abraham Adut, WHO - Email: abenegoa@who.int
6. Dr. Alice Igale Lado, WHO - Email: ladua@who.int
7. Dr. Joseph Wamala, WHO - Email: wamalaj@who.int
8. Dr. Argata Guracha Guyo, WHO - Email: guyo@who.int

Notes

WHO and the Ministry of Health gratefully acknowledge the surveillance officers [at state, county, and health facility levels], health cluster and health pooled fund (HPF) partners who have reported the data used in this bulletin. We would also like to thank ECHO and USAID for providing financial support.

The data has been collected with support from the EWARS project. This is an initiative to strengthen early warning, alert and response in emergencies. It includes an online, desktop and mobile application that can be rapidly configured and deployed in the field. It is designed with frontline users in mind, and built to work in difficult and remote operating environments. This bulletin has been automatically published from the EWARS application.

More information can be found at <http://ewars-project.org>

