

South Sudan

Integrated Disease surveillance and response (IDSR)

**Epidemiological Bulletin Week 45 of 2020 (November 2-
November 08)**



World Health
Organization
South Sudan



- In week 45, 2020 IDSR reporting completeness was 91% and timeliness was 78% at health facility level. EWARNS reporting both completeness and timeliness were 79%
- Of the 83 alerts in week 45, 2020; 87% were verified 0% were risk assessed and 0% required a response. Malaria (28), AWD (28), ARI (10), measles (1) and bloody diarrhea (12) were the most frequent alerts in week 45, 2020
- Malaria remains the top cause of morbidity and accounted for 98,345 cases (66.2% of OPD cases)
- Total of 3,012 COVID-19 confirmed cases and 59 deaths, CFR of 2.0%
- Other hazards include floods in 40 counties; malaria in 12 counties; measles in Pibor; HEV in Bentiu PoC; new confirmed measles outbreaks in Ibba and Wau counties.

SURVEILLANCE PERFORMANCE



For the Integrated Disease Surveillance (IDSR)
network and Early warning alert and response
network (EWARN)



IDSR timeliness & completeness performance at county level for week 45 of 20202



Completeness States Ranking	States	Supporting Partners	Total No. of Functional Health Facilities in the State	No. of HF's Reported on Time	Timeliness Percentage	No. of HF's Reported regardless of Time	Completeness Percentage
1st	NBGZ	Malaria Consortium, Healthnet TPO, IRC, CEDS, IHO	131	125	95%	131	100%
2nd	WBGZ	Cordaid, Healthnet TPO, CARE International, IOM	75	69	92%	75	100%
3rd	Lakes	Doctors with Africa (CUAMM), LIVEWELL	113	100	88%	113	100%
4th	CES	HLSS, SSUHA, Healthnet TPO, IHO, GOAL, TRI-SS, THESO	119	111	93%	118	99%
5th	Warrap	GOAL, CCM, WVI, Malaria Consortium, UNKEA, Save the Children, MSF	119	112	94%	112	94%
6th	WES	AMREF, World Vision, CUAMM, CDTY, OPEN	213	157	74%	189	89%
7th	EES	Cordaid, HLSS, CCM	142	62	44%	126	89%
8th	Unity	Cordaid, UNIDOR, IRC, CHADO, CARE International, CRADA, CASS	88	69	78%	75	85%
9th	Upper Nile	Cordaid, WVI, RI, IMC, NIDO, UNKEA, MC, SSAID, Samaritans Purse	120	88	73%	100	83%
10th	Jonglei	Nile Hope, MDM, JDF, Livewell, CMD, HFO, EDA, CRADA, Malaria Consortium, CMA	107	67	63%	78	73%
	South Sudan		1227	960	78%	1117	91%

KEY

	<60%	Poor
	61%-79%	Fair
	80%-99%	Good
	100%	Excellent

The timeliness of IDSR reporting (supported by EWARS mobile) at health facility level was 78% and completeness was 91%. All states were above the target of 80% with highest reporting rate in NBGZ, WBGZ and Lakes

IDSR timeliness & completeness performance at county level for week 45 of 2020 (1)



STATE	COUNTY	SUPPORTING PARTNER	Total No. of Functional Health Facilities in the County	No. of HFs Reported on Time	Timeliness Percentage	No. of HFs Reported regardless of time	Completeness Percentage
NBGZ	Aweil West	HealthNet TPO	37	37	100%	37	100%
Lakes	Wulu	Doctors with Africa (CUAMM)	14	14	100%	14	100%
Lakes	Rumbek East	Doctors with Africa (CUAMM)	24	24	100%	24	100%
Lakes	Awerial	Doctors with Africa (CUAMM)	7	7	100%	7	100%
NBGZ	Aweil South	Malaria Consortium(MC),IHO	9	9	100%	9	100%
WBGZ	Wau	Cordaid	28	28	100%	28	100%
CES	Terekeka	HealthNetTPO	20	20	100%	20	100%
CES	Juba	HLSS	46	43	93%	46	100%
Lakes	Cueibet	Doctors with Africa (CUAMM)	15	14	93%	15	100%
NBGZ	Aweil Centre	Malaria Consortium(MC)	15	14	93%	15	100%
CES	Kajo Keji	SSUHA,GOAL,TRI-SS	17	15	88%	17	100%
CES	Yei	SSUHA	17	15	88%	17	100%
Lakes	Rumbek Centre	Doctors with Africa (CUAMM)	23	20	87%	23	100%
Lakes	Rumbek North	Doctors with Africa (CUAMM)	7	6	86%	7	100%
WBGZ	Jur River	Cordaid	35	29	83%	35	100%
Lakes	Yirol East	Doctors with Africa (CUAMM),LIVEWELL	11	8	73%	11	100%
Lakes	Yirol West	Doctors with Africa (CUAMM)	12	7	58%	12	100%
NBGZ	Aweil East	IRC,TADO	36	32	89%	34	94%
NBGZ	Aweil North	HealthNetTPO,IHO	33	30	91%	30	91%
CES	Lainya	SSUHA	16	14	88%	14	88%
WBGZ	Raja	HealthNetTPO	14	12	86%	12	86%
CES	Morobo	SSUHA,THESO	5	4	80%	4	80%

STATE	COUNTY	SUPPORTING PARTNER	Total No. of Functional Health Facilities in the County	No. of HFs Reported on Time	Timeliness Percentage	No. of HFs Reported regardless of time	Completeness Percentage
Unity	Mayom	CASS	9	9	100%	9	100%
WES	Nagero	World Vision International	10	10	100%	10	100%
WES	Mundri West	CUAMM	21	21	100%	21	100%
WES	Maridi	AMREF	26	26	100%	26	100%
WES	Mundri East	CUAMM	19	19	100%	19	100%
WES	Mvolo	CUAMM	11	11	100%	11	100%
Unity	Abiemnhom	Cordaid	4	3	75%	4	100%
WES	Tambura	World Vision International	26	9	35%	26	100%
Unity	Panyijjar	IRC	15	11	73%	14	93%
Unity	Mayendit	CASS	12	11	92%	11	92%
Unity	Pariang	CARE International	11	9	82%	10	91%
WES	Yambio	World Vision International	42	35	83%	36	86%
Unity	Koch	CRADA,IRC.	5	4	80%	4	80%
WES	Nzara	World Vision International	20	7	35%	16	80%
Unity	Leer	UNIDOR	11	7	64%	8	73%
WES	Ibba	AMREF	11	3	27%	8	73%
Unity	Rubkona	Cordaid,IRC,IOM,MSF	15	10	67%	10	67%
Unity	Guit	CHADO	7	5	71%	5	71%
WES	Ezo	World Vision International	27	16	59%	16	59%

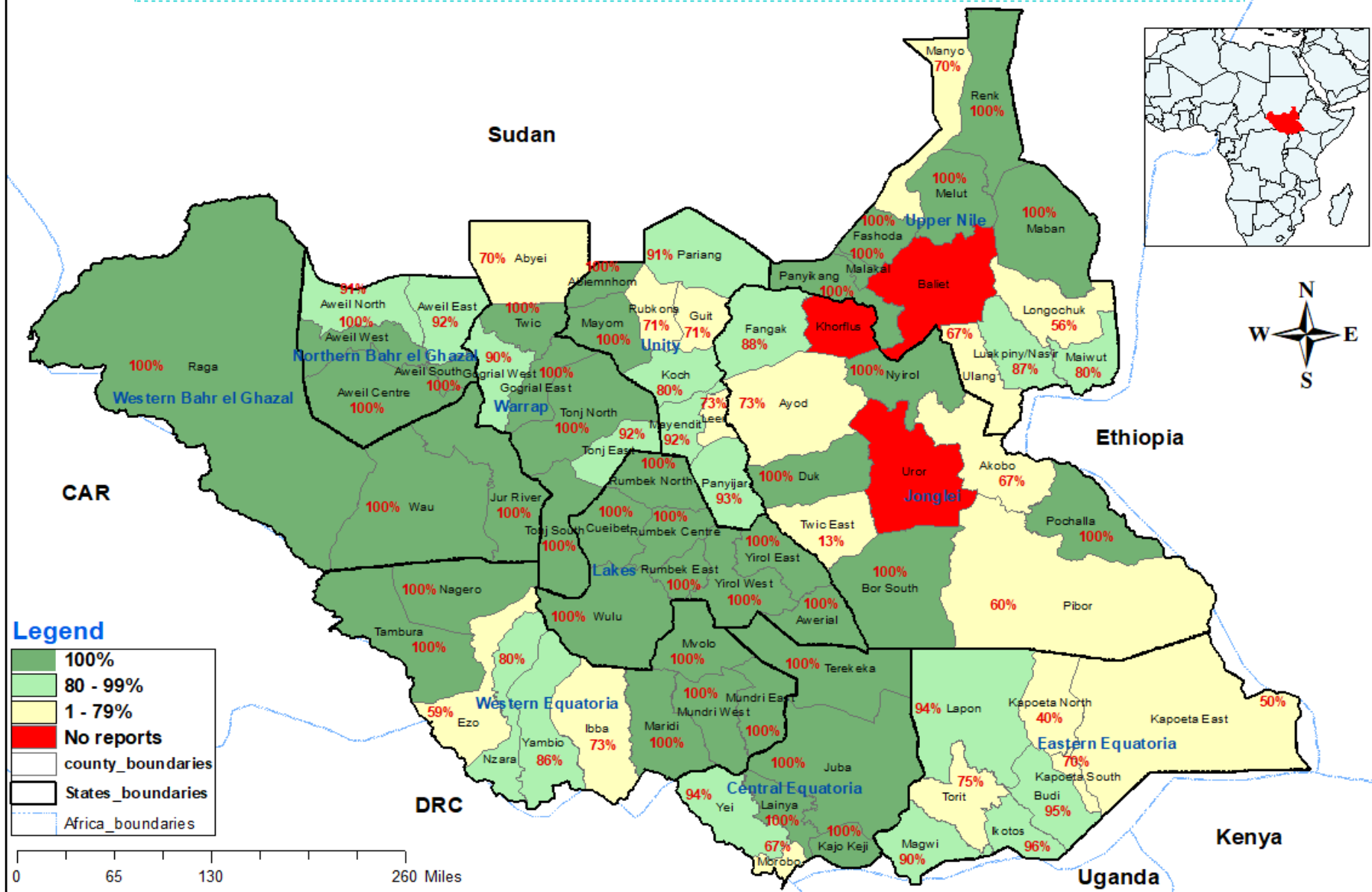
IDSR timeliness & completeness performance at county level for week 45 of 2020 (2)



STATE	COUNTY	SUPPORTING PARTNER	Total No. of Functional Health Facilities in the County	No. of HFs Reported on Time	Timeliness Percentage	No. of HFs Reported regardless of time	Completeness Percentage
Jonglei	Pochalla	LIVEWELL	7	7	100%	7	100%
Jonglei	Nyiroi	CMA, Malaria Consortium	10	0	0%	10	100%
EES	Ikotos	HLSS	27	21	78%	26	96%
EES	Budi	Cordaid	21	0	0%	20	95%
Jonglei	Fangak	CMD, HFO	16	15	94%	15	94%
EES	Lopa Lafon	HLSS	18	10	56%	17	94%
EES	Magwi	HLSS	22	12	55%	19	86%
EES	Torit	Cordaid	20	13	65%	15	75%
Jonglei	Duk	MDM + JDF	15	11	73%	11	73%
EES	Kapoeta South	CCM	10	1	10%	7	70%
Jonglei	Pibor	LIVEWELL, CRADA	3	1	33%	2	67%
Jonglei	Ayod	CMD, EDA	15	9	60%	9	60%
Jonglei	Bor	MDM + JDF	35	21	60%	21	60%
EES	Kapoeta East	CCM	12	5	42%	5	42%
Jonglei	Akobo	NILE HOPE	8	2	25%	2	25%
Jonglei	Twic East	MDM + JDF	11	1	9%	1	9%
EES	Kapoeta North	CCM	16	0	0%	6	38%
Jonglei	Canal Pigi	IMC	11	0	0%	0	0%
Jonglei	Uror	Nile Hope, Malaria Consortium	8	0	0%	0	0%

STATE	COUNTY	SUPPORTING PARTNER	Total No. of Functional Health Facilities in the County	No. of HFs Reported on Time	Timeliness Percentage	No. of HFs Reported regardless of time	Completeness Percentage
Warrap	Gogrial East	GOAL	15	15	100%	15	100%
Warrap	Tonj North	CCM	14	14	100%	14	100%
Warrap	Tonj South	CCM	12	12	100%	12	100%
Upper Nile	Renk	WVI + RI	13	13	100%	13	100%
Upper Nile	Melut	WVI + RI	8	8	100%	8	100%
Upper Nile	Panyikang	IMC	4	4	100%	4	100%
Upper Nile	Fashoda	CORDAID	13	12	92%	13	100%
Upper Nile	Maiwut	RI	5	4	80%	5	100%
Upper Nile	Maban	WVI, RI, Samaritan's Purse	17	13	76%	17	100%
Upper Nile	Makal	IMC	7	5	71%	7	100%
Warrap	Twic	GOAL	26	25	96%	25	96%
Warrap	Tonj East	CCM	12	11	92%	11	92%
Warrap	Gogrial West	GOAL	31	28	90%	28	90%
Upper Nile	Luakpiny Nasir	UNKEA, RI	15	13	87%	13	87%
Upper Nile	Manyo	CORDAID	10	6	60%	8	80%
Warrap	Abyei	AAA, Save the Children, MSF	10	7	70%	7	70%
Upper Nile	Longechuk	RI	9	5	56%	5	56%
Upper Nile	Ulang	UNKEA, RI	14	5	36%	6	43%
Upper Nile	Baliet	IMC	4	0	0%	0	0%
Upper Nile	Akoka	IMC	5	0	0%	0	0%

IDSR performance Map showing completeness of reporting by counties in week 45, 2020.



Disclaimer: The boundaries and names shown and the designations used on this map do not imply the expression of any opinion whatsoever on the part of the World Health Organization concerning the legal status of any country, territory, city or area or of its authorities, or concerning the delimitation of its frontiers or boundaries.



Surveillance: EWARS performance indicator by partner for week 45 of 2020

Partner	HFs	Reporting		Performance	
		# of reports received on Time	No. of HFs Reported regardless of time	Timeliness	Completeness
IRC	1	1	1	100%	100%
HAA	2	2	2	100%	100%
RHS	1	1	1	100%	100%
UNIDOR	2	2	2	100%	100%
GOAL	2	2	2	100%	100%
CMD	1	1	1	100%	100%
Medair	2	2	2	100%	100%
TRI-SS	2	2	2	100%	100%
IMC	6	6	6	100%	100%
HFO	2	2	2	100%	100%
Medicaire	2	2	2	100%	100%
MSF-E	6	6	6	100%	100%
UNH	2	2	2	100%	100%
IOM	12	11	11	92%	92%
MSF-H	5	3	3	60%	60%
IMA	9	3	3	33%	33%
World Relief	2	0	0	0%	0%
SMC	2	0	0	0%	0%
TOTAL	61	48	48	79%	79%

Both completeness and timeliness were 79% for weekly reporting in week 45, 2020 for partner-supported clinics serving IDP sites.

EVENT-BASED SURVEILLANCE



Alert management including detection; reporting;
verification; risk assessment; & risk
characterization





State	Acute Respiratory Infections (ARI)	Acute Watery Diarrhoea	AFP	Bloody Diarrhoea	Malaria (Confirmed)	Measles	Covid-19	Total alerts
CES	3	3		2	4	1		13
EES		5		2	1			8
Jonglei							1	1
Unity		1					2	3
Upper Nile	4	3		2				9
Warrap	1	4	1		4			10
WBGZ	1	2		2	3			8
WES	1	10		4	16			31
Total alerts	10	28	1	12	28	1	3	83

During this week:

10 ARI alert: 3 under verification and 7 are investigated

28 AWD alert: 12 are undergoing verification and 16 are investigated

12 ABD alert: 3 under going Investigation and 9 are investigated

28 Malaria alerts: 4 are under verification and 24 are investigated

3 Covid-19 alert: all are investigated

1 Measles alert: investigated

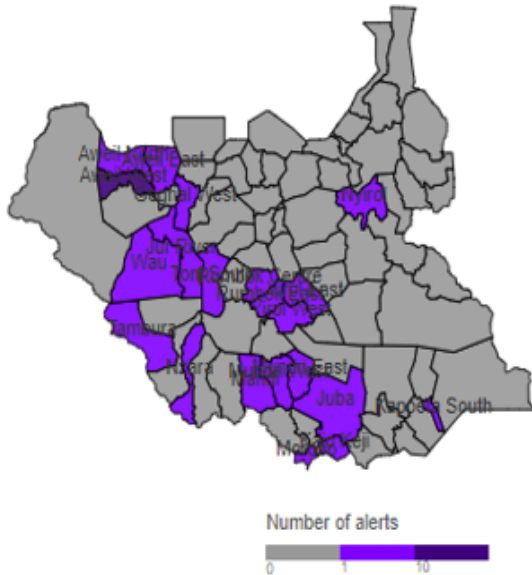
1 AFP alert: investigated



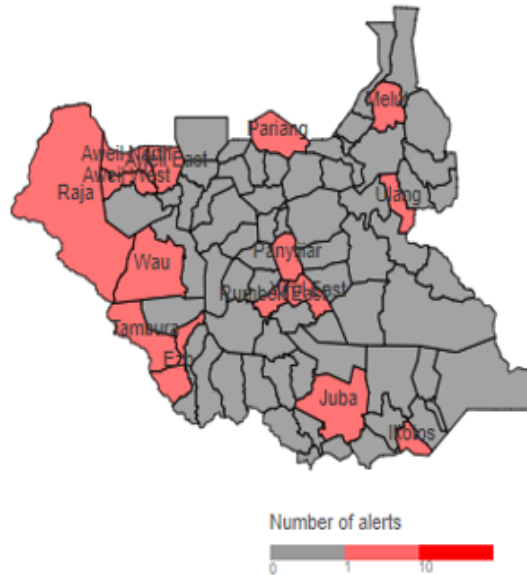
Alert: Map of key disease alerts by county of week 45 of 2020



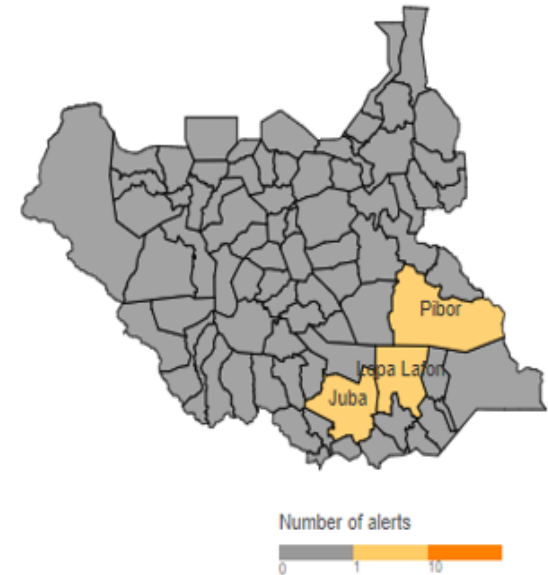
Map 2a | Malaria (W45 2020)



Map 2b | Bloody diarrhoea (W45 2020)



Map 2c | Measles (W45 2020)



W45	Cumulative (2020)	
0	13	Low risk
4	4	Medium risk
0	27	High risk
0	58	Very high risk
87%	80%	% verified
0%	0%	% auto-discarded
0%	1%	% risk assessed
0%	1%	% requiring a response

SUSPECTED OUTBREAKS



Major suspected outbreaks in South Sudan in
2020



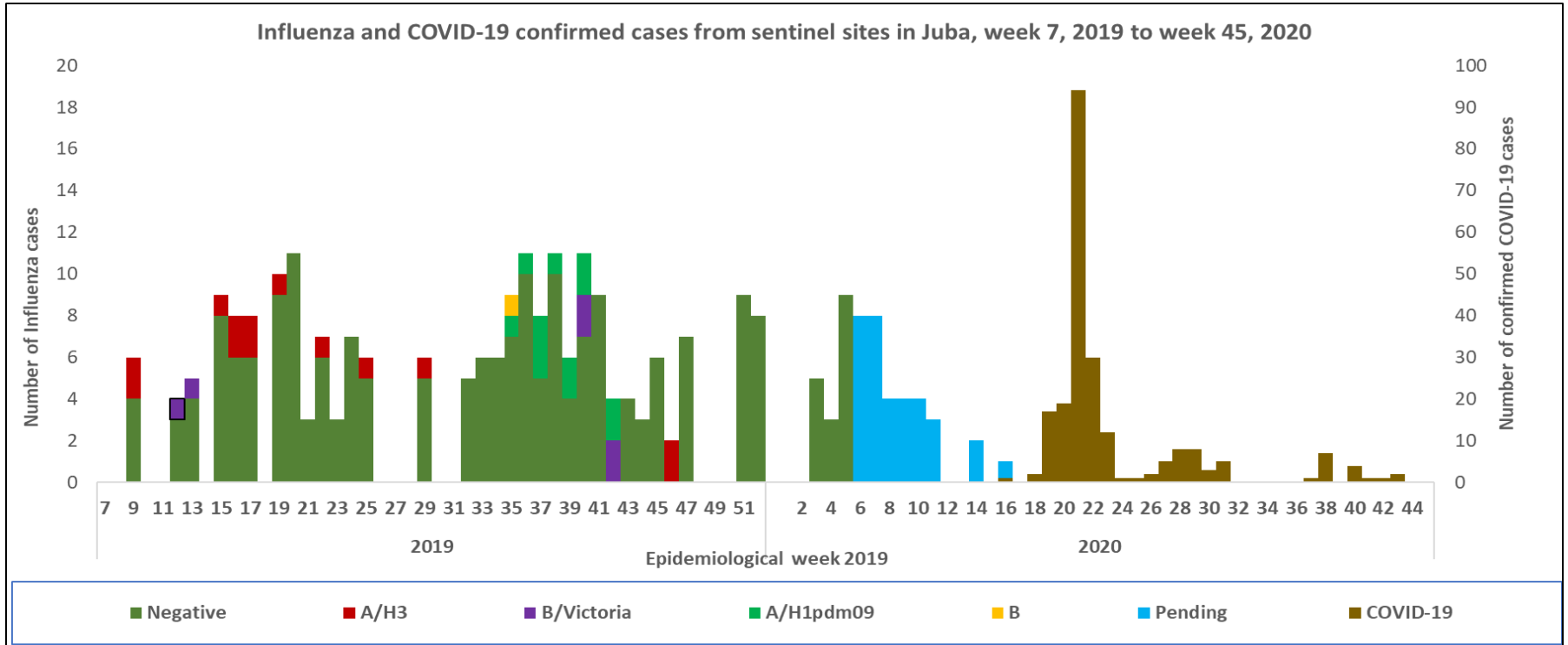


Malaria was the leading cause of morbidity and mortality, accounting for **66.2%** of all morbidities and **29.5%** of all mortalities this week.

There were **12 Counties** with malaria trends that exceeded the threshold (third quartile of trends for the period 2013-2017) and these include the following:

- 1. Aweil hub (Aweil East, Aweil West, Aweil North, Aweil South)**
- 2. Juba hub (Juba)**
- 3. Wau hub (Wau)**
- 4. Bentiu hub(Rubkona)**
- 5. Kuajok hub (Tonj South, Gogrial East Tonj North)**
- 6. Yambio hub (Yambio)**
- 7. Torit hub (Ikotos)**

In the PoC sites; malaria is the top cause of morbidity in Bentiu (47%); Juba (33%), Bor (0%) and Wau (0%) PoCs, in Malakal PoC malaria accounts for (7%) of OPD consultations, respectively.



- In week 7, 2019, South Sudan started case-based surveillance for Influenza Like Illness (ILI) and Severe Acute Respiratory Infection (SARI) cases through systematic collection of epidemiological and virological information.
- In 2019, a total of 309 ILI/SARI samples have been collected and tested in UVRI 228 being negative; 6 positive for Influenza B (Victoria); 13 positive for Influenza A (H3); and 12 positive for Influenza A (H1)pdm09 and (50) samples are pending test results .
- There are currently 20 Covid-19 designated sentinel surveillance sites in Juba that are collecting epidemiological data and samples from ILI/SARI cases. A total of 3982 samples have been collected in 2020 with 222 (5.5%) being positive for COVID-19 in Juba. These sentinel samples have not been tested for influenza in 2020

ACTIVE OUTBREAKS AND PUBLIC HEALTH EVENTS



Brief epidemiological description and public health response for active outbreaks and public health events





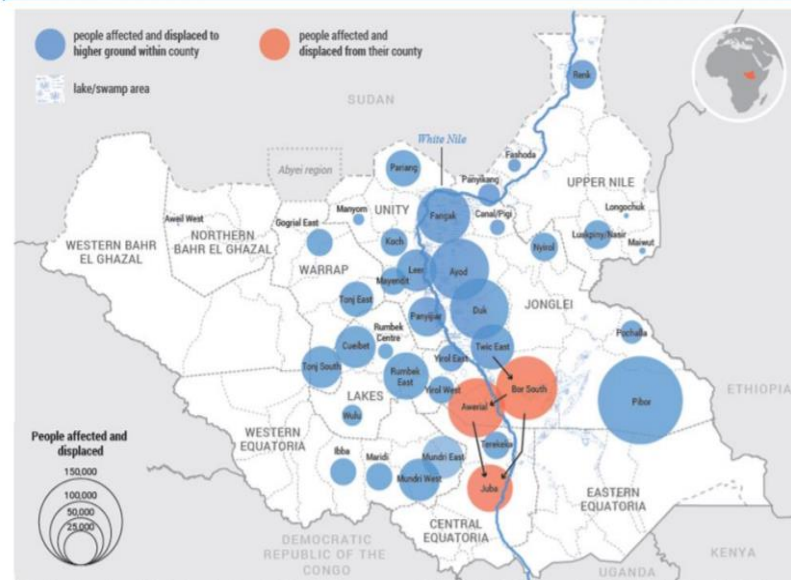
Flooding, South Sudan, week 45, 2020

- Monitoring of flood forecast continues across the country, from October to December 2020, the forecast has shown wetter than usual weather in the northwest and southeast of the country and drier than usual weather in the Western Equatoria. The number of the affected population as of now is estimated to be over 856,000 individuals. The number of affected Counties have jumped to 40 and no new flooding event reported.

Emergency Response

- WHO has received \$1,199,199 as CERF funding to the flood core pipeline.
- Preparations are underway for end of year prepositioning of emergency health kits in WHO state offices.
- The WHO eMMT is currently responding in Pibor through the provision of mobile health and nutrition services to the affected population.
- Floods multi-cluster responses and assessments are ongoing in the other affected Counties.

Maps: People affected and displaced by flood.



Update on Measles lab results release in September 2020 (1)

S/N	County	Total Number of Samples tested	Measles IgM Positive	Rubella IgM Positive
1	Pibor	6	6	0
2	Nzara	10	0	0
3	Ibba	1	0	0
4	Tambura	1	0	1
4	Nagero	1	0	1
5	Ezo	1	0	0
6	Juba	1	0	0
	Total	21	6	2

- In September the lab has received additional 11 samples for Measles
- 5 of the 11 samples are from Pibor and all tested positive for measles IgM

Measles lab results Update, October and November 2020 (2)

S/N	County	Total No. of samples tested	Measles IgM +ve	Rubella IgM +ve	Negative
1	Ibba	5	4	0	1
2	Wau	4	3	0	1
3	Maridi	2	1	0	1
4	Yambio	1	1	0	0
5	Tambura	4	0	0	4
6	Lainya	1	0	0	1
	Total	17	9	0	8

- A total of 17 samples for received for measles from 6 counties
- Nine (09) of all samples tested are positive for measles IgM and 8 negative for
- Four (04) measles IgM +ve from Ibba and 3 IgM +ve from Wau County



Aetiological agent	Location (county)	Date first reported	New cases since last bulletin	Cumulative cases to date (attack rate %)	Interventions			
					Case management	Vaccination	Health promotion	WASH
Ongoing epidemics								
Hepatitis E	Bentiu PoC	03/01/2018	3	409 (0.007)	Yes	No	Yes	Yes
Measles	Bentiu PoC	24/04/2019	NR	482 (0.006)	Yes	Yes	Yes	N/A
Measles	Pibor	27/1/2020	6	132 (0.045)	Yes	Yes	Yes	N/A
Measles	Ibba	25/1/2020	13	40 (0.345)	Yes	Yes	Yes	N/A





- Measles outbreaks confirmed in 2020

- 8 counties – Tonj East, Magwi, Bor, Kapoeta East, Tonj South, Wau and Pibor

- Locations with ongoing measles transmission

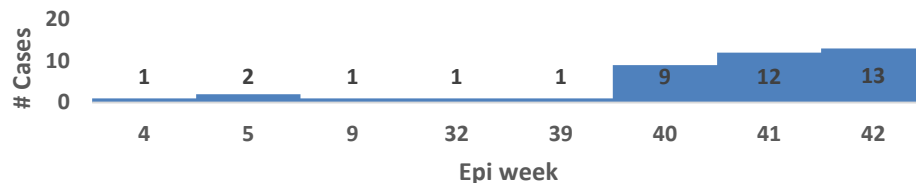
- Pibor County
 - Wau County
 - Ibba County

- **New confirmed measles outbreaks in Wau and Ibba counties.**

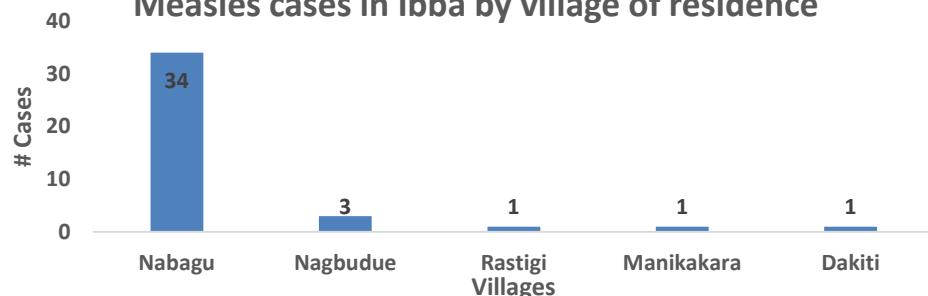


Confirmed Measles Outbreak in Ibba

Measles Cases in Ibba from week 4 to week 42 of 2020



Measles cases in Ibba by village of residence



Background and descriptive epidemiology

- Measles transmission has persisted in Ibba county despite of the mass vaccination, and the follow up campaign was completed for the two counties – the coverage was 99%
- Suspected measles cases were reported and two samples tested measles IgM +e.
- 13 cases were reported in week 42, makes a total of 40 cases since beginning of 2020
- 30% of the cases are less than 5 years of age
- 40% are female and 60% male
- Most affected areas are Nabagu and Nagbudue

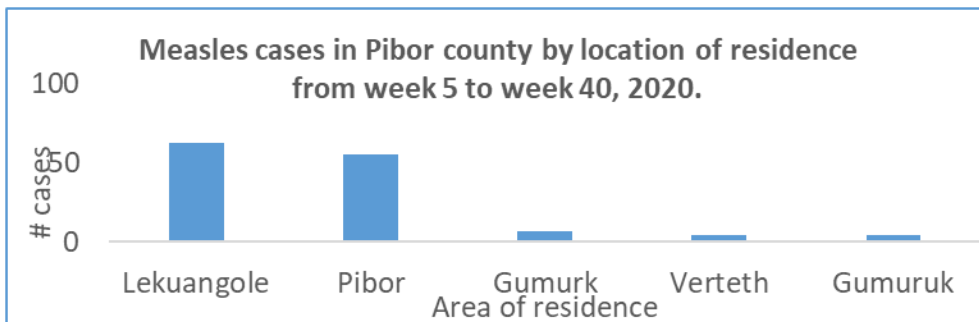
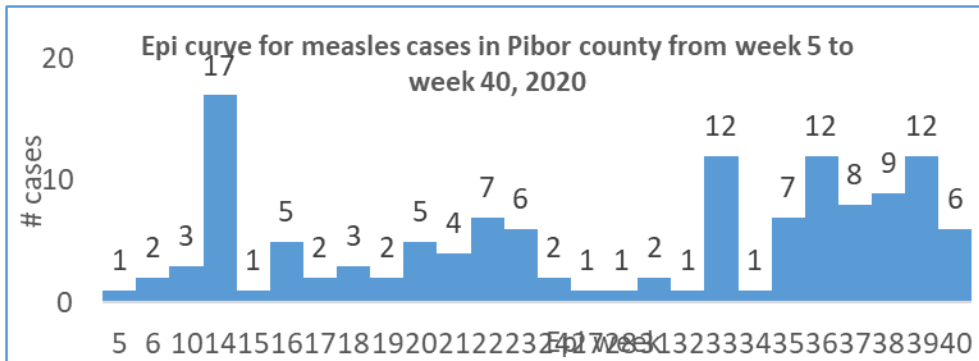
Response Actions:

- Mobilize local health facilities; partners; leaders; and communities to strengthen routine immunization in the area.
- Plan to deploy the state RRT along with the state MoH and WHO EPI officer to conduct detailed investigation of these cases – including line listing; sample collection; status of routine vaccination services in the location.

Age group	Cases	Percentage	CUM. %
0 - 4 Years	12	30%	30%
5 - 9 Years	11	28%	58%
10 - 14 Years	9	23%	80%
15 + Years	8	20%	100%
Grand Total	40	100%	



Confirmed Measles Outbreak in Pibor



Age Group	Cases	Percentage	% Cum.
1 - 4 Years	107	81%	81%
5 - 9 Years	19	14%	95%
15+ Years	4	3%	98%
10 - 14 Years	2	2%	100%
Grand Total	132	100%	

Background and descriptive epidemiology

- Measles transmission has persisted in Pibor county despite of the vaccination campaign conducted in February and March and October, 2019
- Suspected measles cases were reported from Pibor; five sample were send to Juba and tested measles IgM +e.
- 6 cases were reported in week 40, makes a total of 132 since beginning of 2020
- 81% of the cases are less than 5 years of age
- 52% are female and 48% male
- Most affected areas are Lekuangle followed by Pibor town

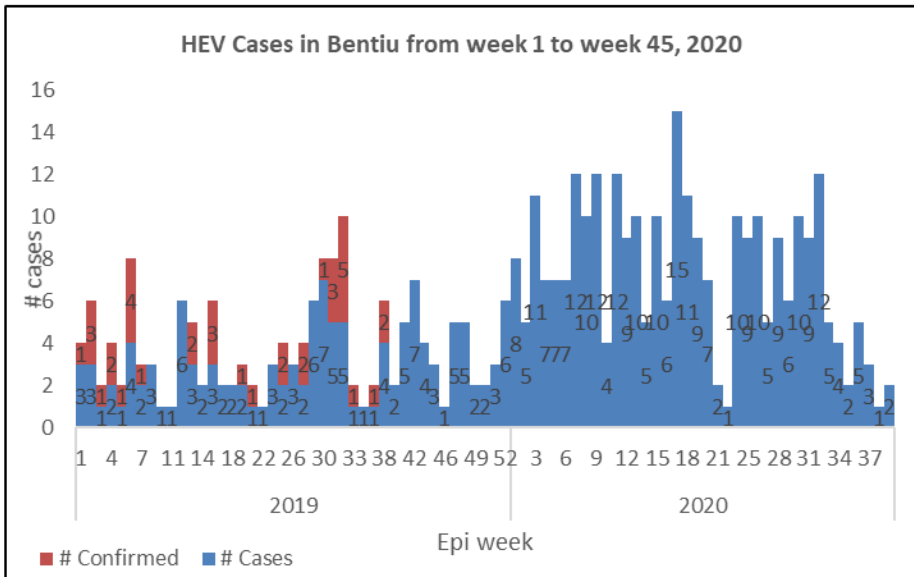
Response Actions:

- Partners to strengthen routine immunization and to continue to collect samples from suspect cases.
- Measles case management to continue
- Micro plan is under development, targeting Pibor town.



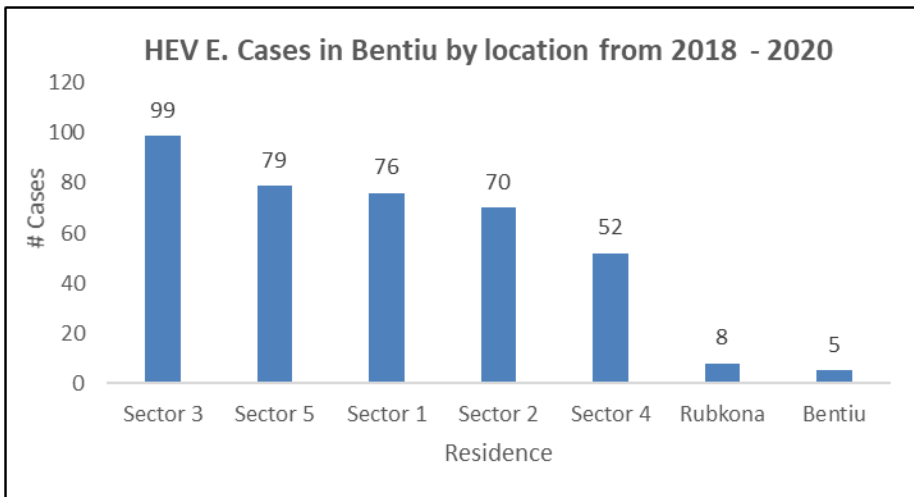


Hepatitis E, Bentiu PoC (1)



Descriptive epidemiology

- The persistent transmission of HEV in Bentiu PoC continues with 412 cases since beginning of 2019
- There were (2) new cases reported in week 35, 2020
- All the cases were managed as outpatient cases except for seven cases who were admitted
- 5 deaths reported in 2019 and 2020
- 49% are female and 51% are male.
- Age group less than 15 years had the most cases with (75%) cases.
- At risk of adverse outcomes when infected in the 3rd trimester of pregnancy
- Use of unsafe drinking water likely to be source of infection
- Up to week 45, 2020; there were 412 cases of HEV in Bentiu PoC including 5 deaths (CFR 0.01%)



Age-Group	Alive	Dead	Grand Total	Percentage	CFR	Cum. %2
1 - 4 Years	128	0	128	31%	0%	31%
10 - 14 Years	64	0	64	16%	0%	47%
15+ Years	101	3	104	25%	3%	72%
5 - 9 Years	114	2	116	28%	2%	100%
Grand Total	407	5	412	100%	0.01	



Recommendations

- Supportive case management guided by the HEV protocol is ongoing
- KEV messages on HEV prevention should continue within the community through HPs, CHWs and Kondial Radio
- With current COVID -19 Pandemic Outbreak, WASH partners to increase the coverage of hand washing facilities within the PoCs community.
- Other Wash intervention like increasing the access for clean water and improving the water storage in the affected individuals should be made urgently by distributing the water storage containers that will be the only way to mitigate this problem and stop the HEV outbreak.
- The WASH Cluster/HEV task force should engage in group discussion with Community leaders and woman group at water distribution points to understand their opinions on issue of Collapsing Jerrycans distribution.
- Monitoring the FRC levels at the taps stands in the different sectors, and the concentration of chlorination should maintain at 0.5-1mg/L as the point of collection





Aetiological agent	Location (county)	Date first reported	New cases since last bulletin	Cumulative cases to date (attack rate %)	Interventions			
					Case management	Vaccination	Health promotion	WASH
Controlled epidemics								
Measles	Juba	21/11/2019	NR	6(0.1667)	Yes	No	Yes	N/A
Measles	Tonj East	12/12/2019	NR	61(0.98)	yes	Yes	Yes	N/A
Measles	Bor	17/01/2020	NR	14(0.214)	yes	No	yes	N/A
Measles	Jebel Boma	10/12/2019	NR	96(0.063)	yes	No	Yes	N/A
Measles	Kapoeta East	18/01/2020	NR	16(0.625)	yes	No	Yes	N/A
Measles	Aweil East	29/12/2019	NR	664 (0.127)	Yes		No	Yes



EBOLA VIRUS DISEASE[EVD] PREPAREDNESS IN SOUTH SUDAN



Brief on the Ebola situation in DR Congo and updates on EVD preparedness in South Sudan



Equateur Outbreak (Reporting up to 30th October)

Cumulative figures for the outbreak

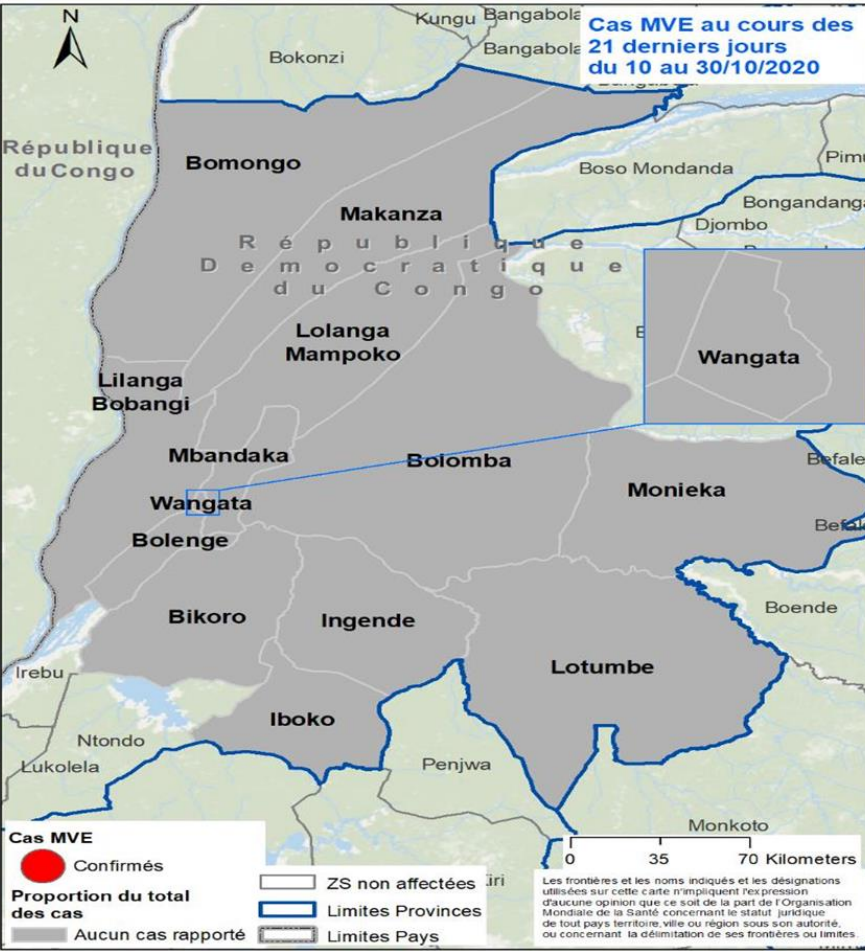
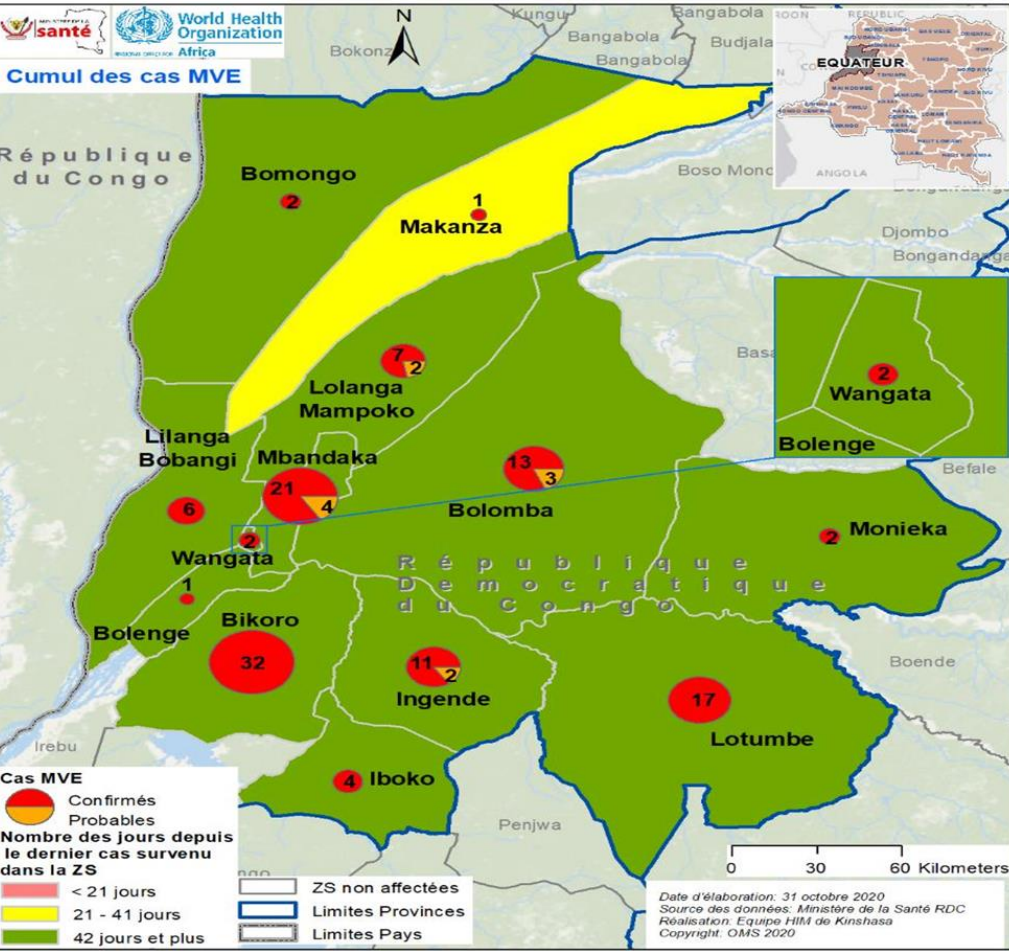
- 130 cases (119 confirmed, 11 probable)
- 55 deaths (42.3% CFR)
- 75 recoveries (57.7%)
- 42 affected health areas, 13 health zones;
- 39,985 vaccinated

- The last confirmed case was reported on 28th Sept. in Makanza HZ
- 6 confirmed cases in the community have been designated as survivors;
- All contacts have completed 21 day follow up;
- 30 suspected are currently being treated across 19 IU/ETCs.
- 32 patients received experimental therapies.

Highlights from past 21 days (20 -30 Oct):

- 0/13 affected HZs have reported a case in past 21 days,
 - 1/42 health areas have not reported a case in over 42 days;
 - 2 new probable cases validated in Lolanga Mampoko who died on the 24 July and 8 Aug
- Main Concerns:**
- Alert reporting remains low, decreasing in most HZs
 - No alerts reported from Bolomba district since 17 Oct

Geographic distribution of confirmed and probable cases of EVD in Equateur province cumulative (n=130) & in the past 21 days



COVID-19 Updates

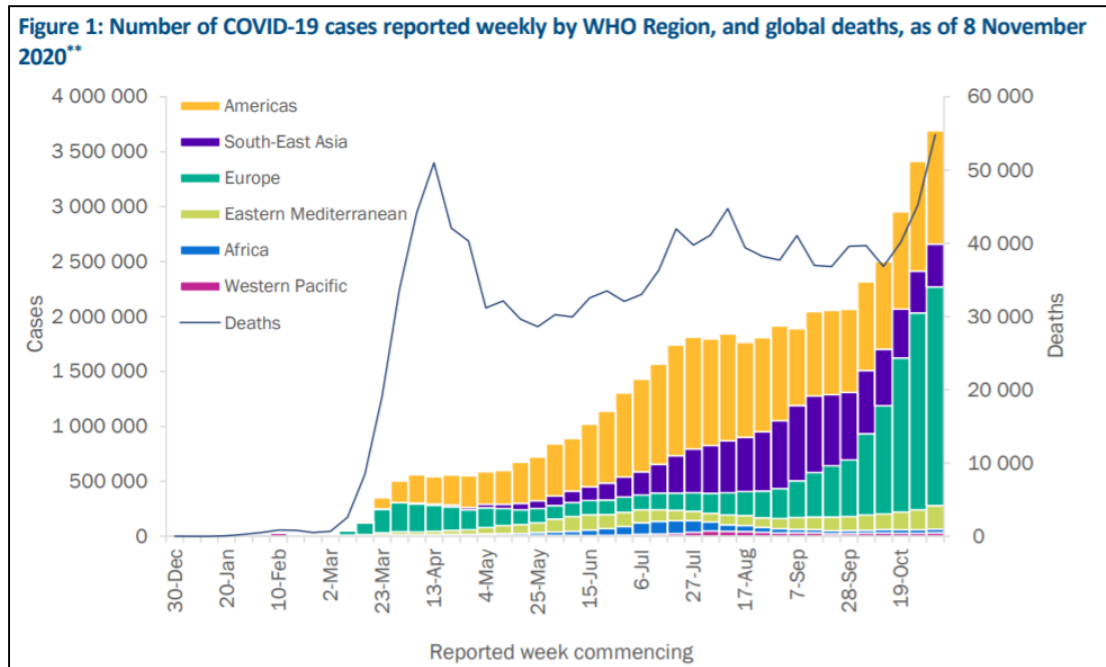


COVID-19 Virus Situation Summary



Situation update as of 8th November 2020

- The COVID-19 pandemic initial cases were detected in Wuhan China
- Globally >49.7 million cases (> 1.2 million deaths)
- Africa > 1 357 945 million cases (>30 616 deaths)



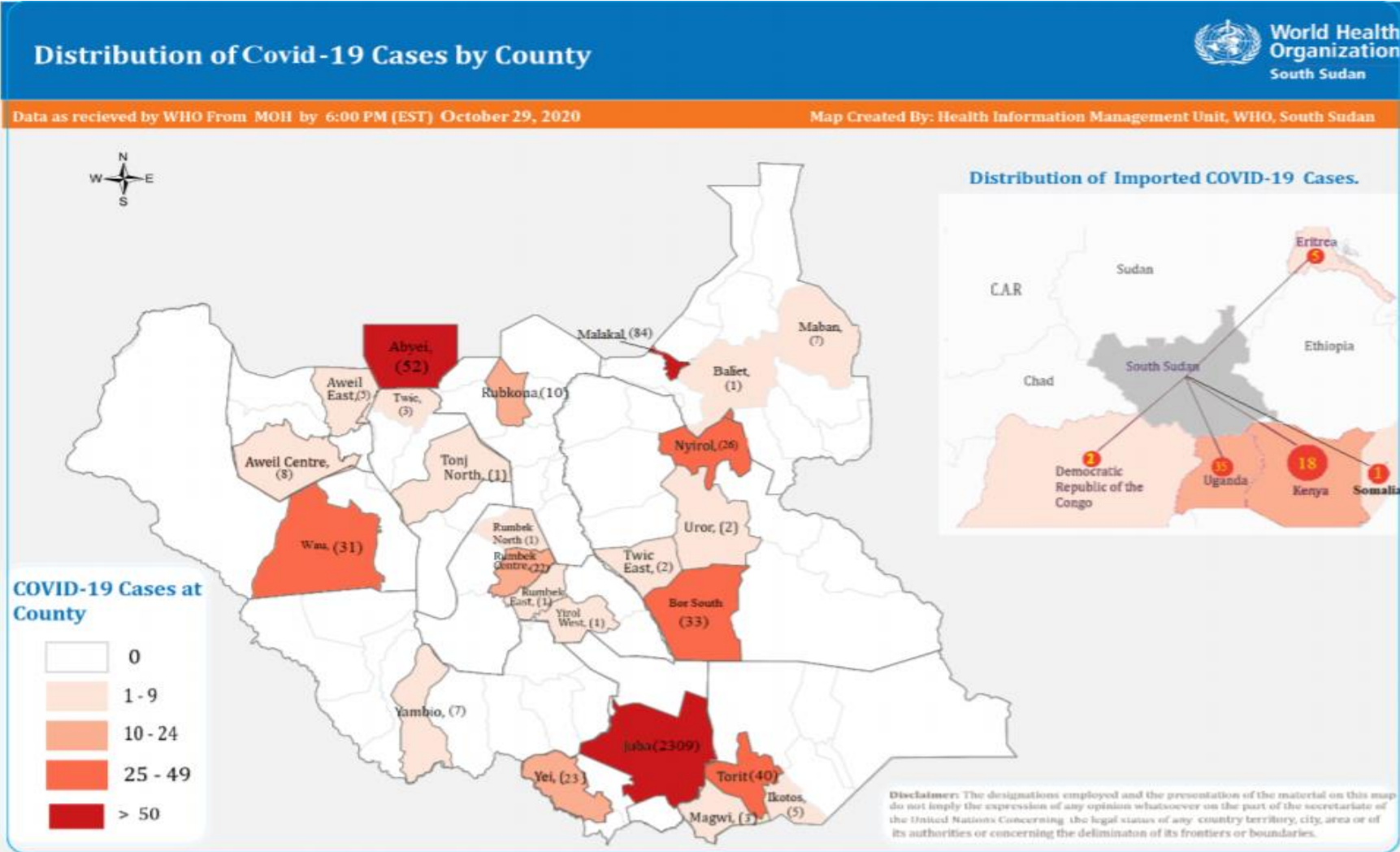
WHO: <https://www.who.int/health-topics/coronavirus>



- 3,012 confirmed COVID-19 cases in South Sudan; 85% in Juba with 59 deaths and a case fatality rate (CFR) of 2.0%. Total 9,228 contacts identified, quarantined, & undergoing follow up
- Implementation of priorities; risk communication and community engagement; active case search and testing; quarantine for contacts; isolation of confirmed cases, infection prevention and control; and management of cases are currently underway
- The overall response currently led by the COVID-19 National level taskforce and the COVID-19 National Steering Committee



Distribution of COVID-19 cases in South Sudan



**Geographical information is available for 2 738 cases.*

The majority of the cases have been reported in Juba; while the rest have been imported (involving truckdrivers from the neighboring countries)

Overall Conclusions and Recommendations



Conclusion

- The overall IDSR and EWARN reporting performance in week 45, is above the target of 80%. All (9) states were above 80%
- 3,012 confirmed COVID-19 cases in South Sudan; 85% in Juba with 59 deaths (CFR of 2.0%). Total 9,228 contacts identified, quarantined, & undergoing follow up
- With eight outbreaks confirmed in 2020; measles remains the most frequent vaccine preventable disease
- New confirmed measles outbreaks in Wau and Ibba counties.
- There are ongoing measles outbreak in Bentiu PoC and Pibor county
- Given the COVID-19 pandemic, it is critical that measures are stepped up to contain its spread.



Recommendations

- All partners should support CHDs & State Ministries of Health to undertake IDSR/EWARN reporting
- All health facilities should report, and conduct case-based investigation of suspect measles cases and routine measles immunization should be strengthened in all counties
- Strengthen capacities for COVID-19 containment through identifying and testing suspect cases, isolating confirmed cases, and quarantining contacts



Thanks to the State Surveillance Officers, County Surveillance Officers and Health Facility in-charges for sharing the weekly IDSR data

Thanks to all partners for supporting IDSR weekly reporting and sharing the line lists

To access the IDSR bulletins for 2020 use the link below:

<https://www.afro.who.int/publications/south-sudan-weekly-disease-surveillance-bulletin-2020>



This bulletin is produced by the Ministry of Health with Technical support from WHO

For more help and support, please contact:

Dr. Pinyi Nyimol Mawien
Director General Preventive Health Services
Ministry of Health
Republic of South Sudan
Telephone: +211916285676

Mr. Mathew Tut M. Kol
Director, Emergency Preparedness and Response
Ministry of Health, RSS
Tell: +211916010382, +211922202028
Emails: tut1988@yahoo.com, greensouth2020@gmail.com
Skype: mathew19885

IDSr Bulletin Editorial Team

1. Mr. Ajak Ater, MoH - Email: ajakater014@gmail.com
2. Ms. Sheila Baya, WHO - Email: bayas@who.int
3. Mr. Robert Lasu Martin, WHO - Email: lasur@who.int
4. Mrs. Rose Dagama, WHO - Email: dagamaa@who.int
5. Dr. Abraham Adut, WHO - Email: abenegoa@who.int
6. Dr. Alice Igale Lado, WHO - Email: ladua@who.int
7. Dr. Joseph Wamala, WHO - Email: wamalaj@who.int
8. Dr. Argata Guracha Guyo, WHO - Email: guyo@who.int

Notes

WHO and the Ministry of Health gratefully acknowledge the surveillance officers [at state, county, and health facility levels], health cluster and health pooled fund (HPF) partners who have reported the data used in this bulletin. We would also like to thank ECHO and USAID for providing financial support.

The data has been collected with support from the EWARS project. This is an initiative to strengthen early warning, alert and response in emergencies. It includes an online, desktop and mobile application that can be rapidly configured and deployed in the field. It is designed with frontline users in mind, and built to work in difficult and remote operating environments. This bulletin has been automatically published from the EWARS application.

More information can be found at <http://ewars-project.org>

