



NAMIBIA COVID-19 SITUATION REPORT NO. 275

Outbreak Name	COVID-19 outbreak	Country affected	Namibia
Date & Time	18.12.2020 17h00	Investigation start Date	13 March 2020
Prepared by	Surveillance Team		

HIGHLIGHTS/SITUATION UPDATE (18/12/2020)

- A total of **18437** cases have been recorded to-date, representing **0.7%** of the population.
- More male cases **9808 (53.2%)** were recorded compared to female cases **8629 (46.8%)**.
- Of the total confirmed cases, **795 (4.3%)** Health Workers (HWs) have tested positive for COVID-19 to-date.
 - 532 (66.9%) State; 259 (32.6%) Private, 4 (0.5%) Non-Governmental Organizations.
 - 574 (72.2%) recoveries and 3 (0.4%) deaths.
- The recovery rate now stands at **86.0%**.
- All fourteen (14) regions have reported confirmed cases; Khomas and Erongo regions reported the highest with **8887 (48.2%)** and **4482 (24.3%)** respectively.
- Of the total fatalities, **129 (75.4%)** are COVID-19 deaths while **42 (24.6%)** are COVID-19 related deaths.



Table 1: Distribution of confirmed COVID-19 cases by region, 18 December 2020

Region	Total No. of cases	Active cases	Recoveries	Deaths	Deaths in 24 hours	Cumulative deaths with co-morbidities	Non-COVID deaths	Health Workers
Erongo	4482	182	4256	43	0	40	1	91
Hardap	832	50	775	7	0	5	0	25
//Kharas	989	294	689	6	0	4	0	41
Kavango East	246	35	208	3	0	2	0	24
Kavango West	8	0	7	1	0	1	0	1
Khomas	8887	1255	7551	81	1	78	0	452
Kunene	141	68	71	2	0	2	0	12
Ohangwena	244	7	234	2	0	0	1	7
Omaheke	181	32	144	5	1	4	0	6
Omusati	120	31	87	2	0	1	0	8
Oshana	1030	192	827	11	0	9	0	74
Oshikoto	522	44	476	1	0	1	1	16
Otjozondjupa	666	217	442	7	0	4	0	24
Zambezi	89	7	82	0	0	0	0	14
Total	18437	2414	15849	171	2	171	3	795

EPIDEMIOLOGICAL SITUATION IN NAMIBIA

Table 2: Number of people in mandatory quarantine facilities, 18 December 2020

Region	Newly quarantined 24 Hrs.	Cumulative number	Number discharged	Number in quarantine now	Truck Drivers quarantined in 24 hrs.
Erongo	0	4464	4358	106	0
Hardap	13	1002	965	37	0
Kavango	0	883	823	60	0
Khomas	0	3006	2969	37	0
//Kharas	0	2928	2914	14	0
Kunene	43	1123	967	156	0
Ohangwena	0	575	570	5	0
Omaheke	0	1830	1763	67	0
Omusati	0	456	438	18	0
Oshana	0	365	365	0	0
Oshikoto	52	3475	3040	435	0
Otjizondjupa	0	1032	981	51	0
Zambezi	5	1160	1104	56	0
Total	113	22299	21257	1042	0

- Since March 2020, **22299** people have been placed into mandatory quarantine facilities around the country.
- A total of **1042** people are currently in quarantine, with **113** new admissions in the last 24 hours.

- A highest peak of **2123 (11.5%)** cases was recorded during week 34 (Figure 1).
- The National Call center continues operation for 24 hours daily.

Today (18/12/2020) **1124** calls were answered including **100** alerts.

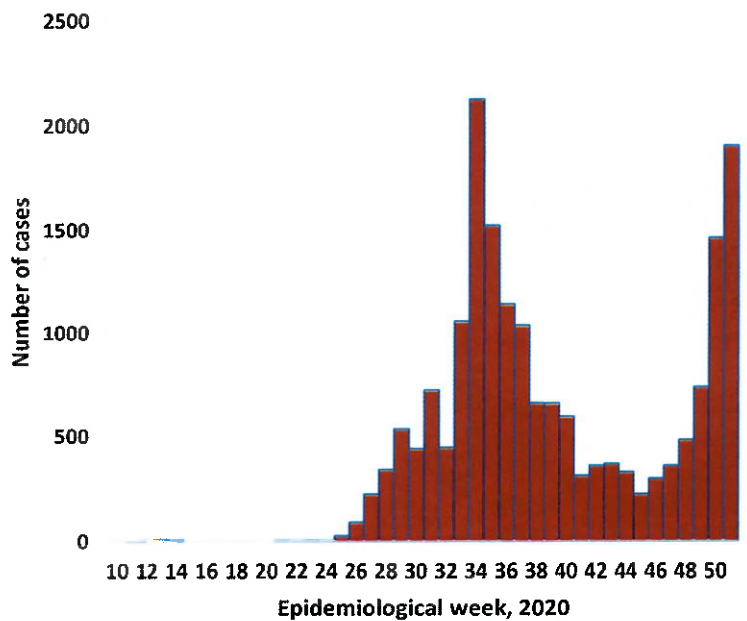


Figure 1: Epi-curve for confirmed COVID-19 cases As of 18 December 2020

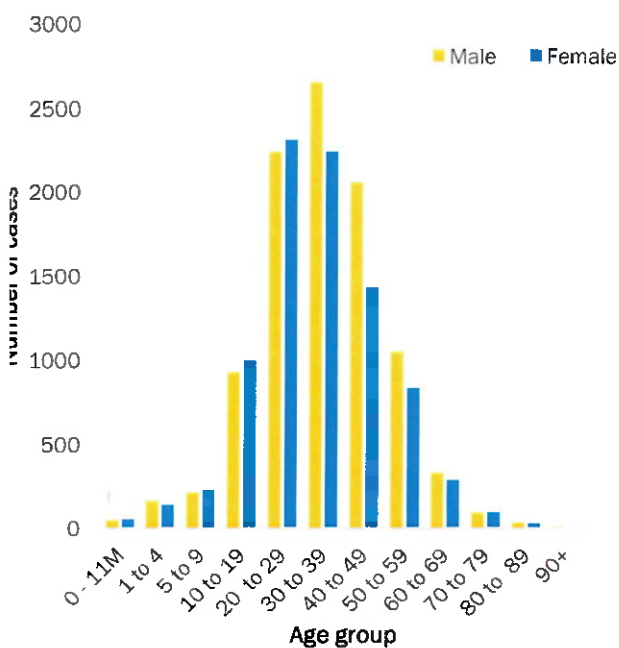


Figure 2: Age and Sex distribution of COVID-19 confirmed cases, as of 18 December 2020

- Of the total confirmed cases, **12922 (70.1%)** are in the 20-49 years age-brackets which constitutes the majority of the recorded cases.
- A total of **2360 (12.8%)** of the confirmed cases are among the 5-19 years category.
- The under 5 years age group make **407 (2.2%)** of the total cases whereas, **874 (4.7%)** are above 60 years of age.

Table 3: COVID-19 specimen recorded at the Laboratories, As of 18 December 2020

VARIABLES	TOTAL
Total samples received by the Laboratory	184689
Total samples tested	177105
Total samples re-tested	7466
Total positive results	18437
Total negative results	158616
Total samples discarded	117
Invalid results	1
Total pending results	0
Indeterminant/Inconclusive	52
Suspected cases in 24 hours (excludes re-tests)	1848

- To date, **184571** tests (including **7466** re-tests) have been conducted by NIP, Path-Care, NAMDEB, UNAM and Namib Poultry laboratories.
- Since the beginning of the outbreak, **42658** contacts of confirmed cases have been identified, **490** new contacts were identified within the last 24 hours from 11 regions.
- Cumulatively, **37786** contacts have completed their monitoring period, while a total of **4967 (26.9%)** contacts of confirmed cases have tested positive.
- Today, **4672 (98.1%)** out of **4763** active contacts monitored.

PUBLIC HEALTH ACTION(S)

- Public awareness on COVID-19 prevention measures is ongoing.
- The government and developmental partners continue to prioritise continuation of essential health services.

CHALLENGES

- Lack of isolation units and facilities in the country for special cases in closed settings such as schools, police holding cells and prisons.
- Non- adherence to COVID-19 prevention measures by the general public.

RECOMMENDATIONS


- Establish fully equipped isolation units and facilities for identified special cases throughout the country.
- Continue to give awareness on the importance of adhering to COVID -19 prevention measures.

Approved



 Incident Manager

18 December 2020



 Secretariat

For enquiries, please contact
Namibia Public Health Emergency Operations Centre:

 PHEOC@mhss.gov.na
 0800 100 100
 0851 100 100