



NAMIBIA COVID-19 SITUATION REPORT NO. 290

Outbreak Name	COVID-19 outbreak	Country affected	Namibia
Date & Time	02.01.2021 17h00	Investigation start Date	13 March 2020
Prepared by	Surveillance Team		

HIGHLIGHTS/SITUATION UPDATE (02/01/2021)

TOTAL

Tested 211668

Confirmed 25116

Active 3843

Recovered 21055

Death 215

TODAY

Tested 2158

Confirmed 462

Active 3843

Recovered 124

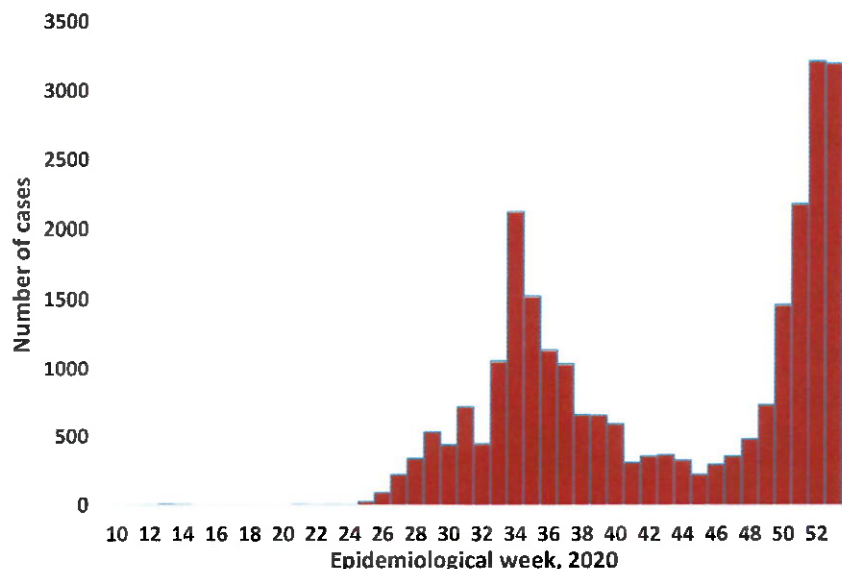
Death 2

- A total of **25116** cases have been recorded to-date, representing **1%** of the population.
- More male cases **12896 (51.3%)** were recorded compared to female cases **12220 (48.7%)**.
- Of the total confirmed cases, **1068 (4.3%)** Health Workers (HWs) have tested positive for COVID-19 to-date.
 - 781 (73.1%) State; 283 (26.5%) Private, 4 (0.4%) Non-Governmental Organizations.
 - 747 (69.9%) recoveries and 3 (0.3%) deaths.
- The recovery rate now stands at **83.8%**.
- All fourteen (14) regions have reported confirmed cases; Khomas and Erongo regions reported the highest with **11900 (47.4%)** and **5592 (22.3%)** respectively.
- Of the total fatalities, **170 (79.1%)** are COVID-19 deaths while **45 (20.9%)** are COVID-19 related deaths.

Table 1: Distribution of confirmed COVID-19 cases by region, 02 January 2021

Region	Total No. of cases	Active cases	Recoveries	Cumulative Deaths	Deaths in 24 hours	Cumulative deaths with co-morbidities	Non-COVID deaths	Health Workers
Erongo	5592	661	4877	53	0	49	1	118
Hardap	1071	177	887	7	0	5	0	28
//Kharas	1451	416	1023	12	2	9	0	58
Kavango East	346	104	239	3	0	2	0	27
Kavango West	15	7	7	1	0	1	0	1
Khomas	11900	1194	10606	100	0	94	0	601
Kunene	526	170	352	4	0	4	0	27
Ohangwena	332	72	257	2	0	0	1	12
Omaheke	281	56	220	5	0	4	0	12
Omusati	236	49	184	3	0	2	0	11
Oshana	1426	467	948	11	0	9	0	94
Oshikoto	758	204	552	1	0	1	1	27
Otjozondjupa	1047	217	819	11	0	7	0	37
Zambezi	135	49	84	2	0	2	0	15
Total	25116	3843	21055	215	2	189	3	1068

EPIDEMIOLOGICAL SITUATION IN NAMIBIA



- A highest peak of **3209 (12.8%)** cases was recorded during week 52 (Figure 1).
- The National Call center continues operation for 24 hours daily.

Figure 1: Epi-curve for confirmed COVID-19 cases, As of 02 January 2021

Table 2: COVID-19 specimen recorded at the Laboratories As of 02 January 2021

VARIABLES	TOTAL
Total samples received by the Laboratory	211786
Total samples tested	202632
Total samples re-tested	9036
Total positive results	25116
Total negative results	177458
Total samples discarded	117
Invalid results	1
Total pending results	0
Indeterminant/Inconclusive	58
Suspected cases in 24 hours (excludes re-tests)	1991

- To date, **211668** tests (including **9036** re-tests) have been conducted by NIP, Path-Care, NAMDEB, UNAM, Namib Poultry and Central Veterinary laboratories.
- Since the beginning of the outbreak, **48466** contacts of confirmed cases have been identified, **147** new contacts were identified within the last 24 hours from 9 regions.
- Cumulatively, **41879** contacts have completed their monitoring period, while a total of **5578 (22.2%)** contacts of confirmed cases have tested positive.
- Today, **3644 (59.2%)** out of **6160** active contacts monitored.

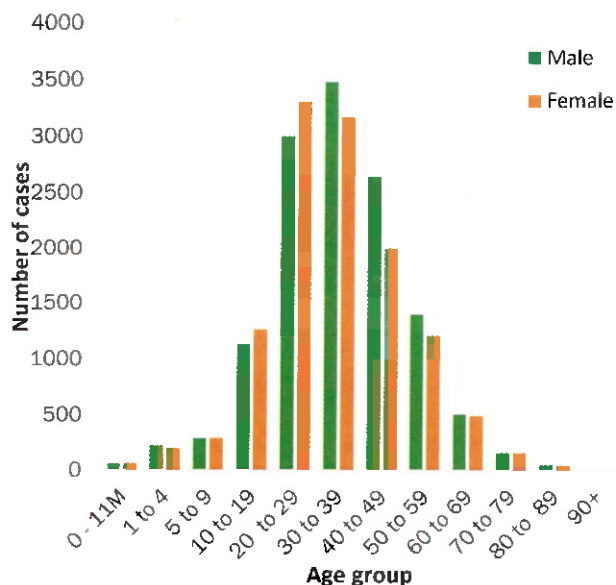


Figure 2: Age and Sex distribution of COVID-19 confirmed cases, as of 02 January 2021

- Of the total confirmed cases, **17564 (69.9%)** are in the 20-49 years age-brackets which constitutes the majority of the recorded cases.
- A total of **2969 (11.8%)** of the confirmed cases are among the 5-19 years category.
- The under 5 years age group make **546 (2.2%)** of the total cases whereas, **1433 (5.7%)** are above 60 years of age.

Table 3: Number of people in mandatory quarantine facilities, 02 January 2021

Region	Newly quarantined 24 Hrs.	Cumulative number	Number discharged	Number in quarantine now	Truck Drivers quarantined In 24 hrs.
Erongo	0	4529	4477	52	0
Hardap	6	1097	1023	74	0
Kavango	2	916	898	18	0
Khomas	0	3074	3053	21	0
//Kharas	0	3897	3791	106	0
Kunene	10	1911	1469	442	0
Ohangwena	0	588	581	7	0
Omaheke	0	2114	2011	103	0
Omusati	0	493	466	27	0
Oshana	0	381	375	6	0
Oshikoto	0	4107	3560	547	0
Otjozondjupa	0	1071	1032	39	0
Zambezi	0	1219	1184	35	0
Total	18	25397	23920	1477	0

➤ Since March 2020, **25397** people have been placed into mandatory quarantine facilities around the country.

➤ A total of **1477** people are currently in quarantine, with **18** new admissions.

PUBLIC HEALTH ACTION(S)

- Public awareness on COVID-19 prevention measures is ongoing.
- The government and developmental partners continue to prioritise continuation of essential health services.

CHALLENGES

- Lack of isolation units and facilities in the regions.
- Non-adherence to COVID-19 prevention measures by the general public.


RECOMMENDATIONS

- Establish fully equipped isolation units and facilities throughout the country.
- Continue to give awareness on the importance of adhering to COVID -19 prevention measures; with the involvement of the Security Cluster.


Approved


Incident Manager

02 January 2021


Secretariat

For enquiries, please contact
Namibia Public Health Emergency Operations Centre:

 PHEOC@mhss.gov.na

 0800 100 100

 0851 100 100