



NAMIBIA COVID-19 SITUATION REPORT NO. 295

Outbreak Name	COVID-19 outbreak	Country affected	Namibia
Date & Time	07.01.2021 17h00	Investigation start Date	13 March 2020
Prepared by	Surveillance Team		

HIGHLIGHTS/SITUATION UPDATE (07/01/2021)



- A total of **27255** cases have been recorded to-date, representing **1.1%** of the population.
- More male cases **13907 (51%)** were recorded compared to female cases **13348 (49%)**.
- Of the total confirmed cases, **1272 (4.67)** Health Workers (HWs) have tested positive for COVID-19 to-date.
 - 965 (75.9%) State; 303 (23.8%) Private, 4 (0.3%) Non-Governmental Organizations.
 - 960 (75.5%) recoveries and 6 (0.5%) deaths.



- The recovery rate now stands at **85%**.
- All fourteen (14) regions have reported confirmed cases; Khomas and Erongo regions reported the highest with **12690 (46.6%)** and **5978 (21.9%)** respectively.
- Of the total fatalities, **198 (80.8%)** are COVID-19 deaths while **47 (19.2%)** are COVID-19 related deaths.

Table 1: Distribution of confirmed COVID-19 cases by region, 07 January 2021

Region	Total No. of cases	Active cases	Recoveries	Cumulative Deaths	Deaths in 24 hours	Cumulative deaths with co-morbidities	Non-COVID deaths	Health Workers
Erongo	5978	813	5104	59	1	55	2	142
Hardap	1113	141	964	8	0	6	0	31
//Kharas	1690	564	1112	14	1	11	0	75
Kavango East	381	55	322	4	0	2	0	36
Kavango West	17	7	9	1	0	1	0	1
Khomas	12690	845	11733	112	1	105	0	644
Kunene	606	80	521	5	1	5	0	35
Ohangwena	371	65	303	2	0	0	1	19
Omaheke	341	61	273	6	0	4	0	21
Omusati	281	68	210	3	0	2	0	17
Oshana	1553	517	1023	13	1	11	0	125
Oshikoto	880	264	614	1	0	1	1	54
Otjozondjupa	1191	273	905	14	0	10	0	55
Zambezi	163	76	84	3	0	3	0	17
Total	27255	3829	23177	245	5	216	4	1272

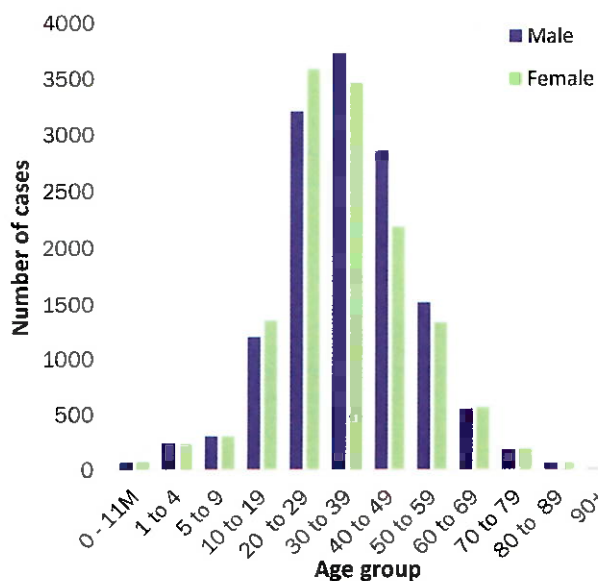


Figure 1: Age and Sex distribution of COVID-19 confirmed cases, as of 07 January 2021

- Of the total confirmed cases, **19004 (69.7%)** are in the 20-49 years age-brackets which constitutes the majority of the recorded cases.
- A total of **3171 (11.6%)** of the confirmed cases are among the 5-19 years category.
- The under 5 years age group make **605 (2.2%)** of the total cases whereas, **1625 (6.0%)** are above 60 years of age.

Table 2: Number of people in mandatory quarantine facilities 07 January 2021

Region	Newly quarantined 24 Hrs.	Cumulative number	Number discharged	Number in quarantine now
Erongo	0	4564	4515	49
Hardap	8	1161	1088	73
Kavango	19	946	914	32
Khomas	7	3099	3081	18
//Kharas	0	3897	3791	106
Kunene	22	2089	1739	350
Ohangwena	0	601	589	12
Omaheke	132	2336	2082	254
Omusati	4	512	490	22
Oshana	0	381	376	5
Oshikoto	542	4766	4050	716
Otjozondjupa	0	1071	1071	0
Zambezi	22	1267	1225	42
Total	756	26690	25011	1679

- Since March 2020, **26690** people have been placed into mandatory quarantine facilities around the country.
- A total of **1679** people are currently in quarantine, with **756** new admissions.

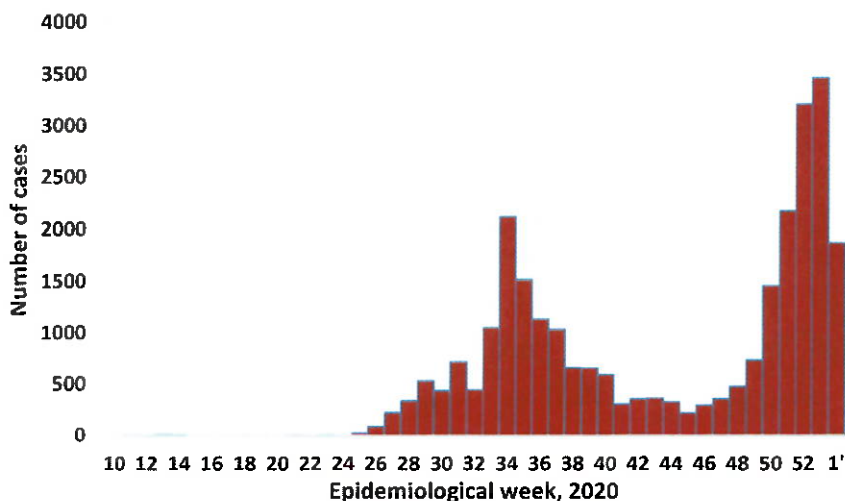


Figure 2: Epi-curve for confirmed COVID-19 cases, As of 07 January 2021

- A highest peak of **3463 (12.7%)** cases was recorded during week 53 (Figure 2).
- The National Call center continues operation for 24 hours daily.

Today (07/01/2021) **1000** calls were answered including **72** alerts.

VARIABLES	TOTAL
Total samples received by the Laboratory	221126
Total samples tested	211404
Total samples re-tested	9604
Total positive results	27255
Total negative results	184091
Total samples discarded	117
Invalid results	1
Total pending results	0
Indeterminant/Inconclusive	58
Suspected cases in 24 hours (excludes re-tests)	2364

- To date, **221008** tests (including **9604** re-tests) have been conducted by NIP, Path-Care, NAMDEB, UNAM, Namib Poultry and Central Veterinary laboratories.
- Since the beginning of the outbreak, **51067** contacts of confirmed cases have been identified, **513** new contacts were identified within the last 24 hours from 1444589 regions.
- Cumulatively, **44162** contacts have completed their monitoring period, while a total of **5935 (21.8%)** contacts of confirmed cases have tested positive.
- Today, **4542 (72.6%)** out of **6254** active contacts monitored.

PUBLIC HEALTH ACTION(S)

- Public awareness on COVID-19 prevention measures is ongoing.
- The government and developmental partners continue to prioritise continuation of essential health services.

CHALLENGES

- Lack of isolation units and facilities in the regions.
- Non-adherence to COVID-19 prevention measures by the general public.

RECOMMENDATIONS


- Establish fully equipped isolation units and facilities throughout the country.
- Continue to give awareness on the importance of adhering to COVID -19 prevention measures; with the involvement of the Security Cluster.


APPROVED





 INCIDENT MANAGER
 07 JANUARY 2021

For enquiries, please contact
 Namibia Public Health Emergency Operations Centre:

 PHEOC@mhss.gov.na

 0800 100 100

 0851 100 100



 SECRETARIAT