



NAMIBIA COVID-19 SITUATION REPORT NO. 297

Outbreak Name	COVID-19 outbreak	Country affected	Namibia
Date & Time	09.01.2021 17h00	Investigation start Date	13 March 2020
Prepared by	Surveillance Team		

HIGHLIGHTS/SITUATION UPDATE (09/01/2021)

TOTAL

Tested 226474

Confirmed 28259

Active 3708

Recovered 24292

Death 254

TODAY

Tested 2724

Confirmed 536

Active 3708

Recovered 380

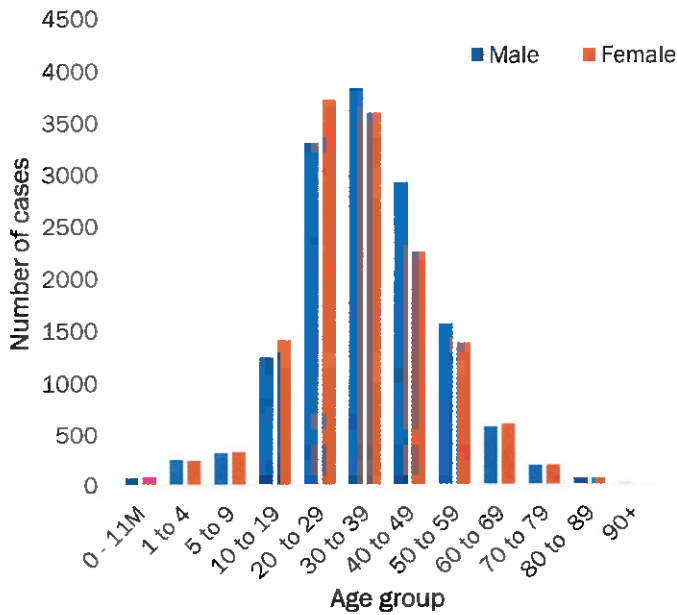
Death 3

- A total of **28259** cases have been recorded to-date, representing **1.1%** of the population.
- More male cases **14357 (50.8%)** were recorded compared to female cases **13902 (49.2%)**.
- Of the total confirmed cases, **1324 (4.6%)** Health Workers (HWs) have tested positive for COVID-19 to-date.
 - 998 (75.4%) State; 322 (24.3%) Private, 4 (0.3%) Non-Governmental Organizations.
 - 960 (72.5%) recoveries and 6 (0.5%) deaths.

- The recovery rate now stands at **86%**.
- All fourteen (14) regions have reported confirmed cases; Khomas and Erongo regions reported the highest with **12920 (45.7%)** and **6168 (21.8%)** respectively.
- Of the total fatalities, **206 (81%)** are COVID-19 deaths while **48 (18.9%)** are COVID-19 related deaths.

Table 1: Distribution of confirmed COVID-19 cases by region, 09 January 2021

Region	Total No. of cases	Active cases	Recoveries	Cumulative Deaths	Deaths in 24 hours	Cumulative deaths with co-morbidities	Non-COVID deaths	Health Workers
Erongo	6168	677	5428	60	0	57	3	149
Hardap	1179	192	979	8	0	6	0	31
//Kharas	1774	404	1353	17	1	14	0	79
Kavango East	429	103	322	4	0	2	0	44
Kavango West	17	7	9	1	0	1	0	1
Khomas	12920	737	12069	114	2	106	0	651
Kunene	644	118	521	5	0	5	0	36
Ohangwena	396	80	313	2	0	0	1	20
Omaheke	370	68	295	6	0	4	0	24
Omusati	322	62	257	3	0	2	0	17
Oshana	1632	596	1023	13	0	11	0	132
Oshikoto	959	343	614	1	0	1	1	64
Otjozondjupa	1260	271	974	16	0	11	0	58
Zambezi	189	50	135	4	0	4	0	18
Total	28259	3708	24292	254	3	224	5	12



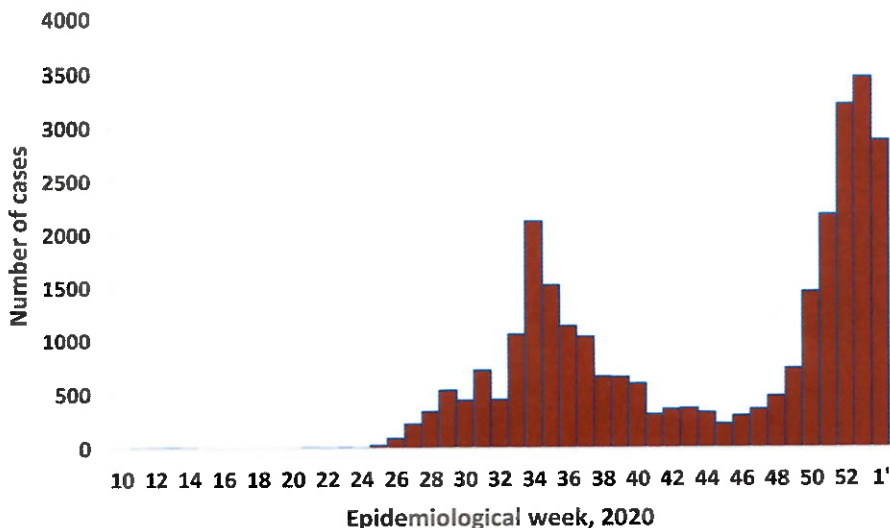
- Of the total confirmed cases, **19662 (69.6%)** are in the 20-49 years age-brackets which constitutes the majority of the recorded cases.
- A total of **3298 (11.7%)** of the confirmed cases are among the 5-19 years category.
- The under 5 years age group make **637 (2.3%)** of the total cases whereas, **1713 (6.1%)** are above 60 years of age.

Figure 1: Age and Sex distribution of COVID-19 confirmed cases, as of 09 January 2021

Table 2: Number of people in mandatory quarantine facilities 09 January 2021

Region	Newly quarantined 24 Hrs.	Cumulative number	Number discharged	Number in quarantine now
Erongo	0	4564	4518	46
Hardap	15	1176	1104	72
Kavango	28	974	925	49
Khomas	0	3099	3081	18
//Kharas	0	3897	3791	106
Kunene	52	2155	1845	310
Ohangwena	0	601	591	10
Omaheke	46	2394	2168	226
Omusati	1	513	494	19
Oshana	0	381	376	5
Oshikoto	0	4865	4064	801
Otjozondjupa	0	1095	1071	24
Zambezi	0	1267	1225	42
Total	142	26981	25253	1728

- Since March 2020, **26981** people have been placed into mandatory quarantine facilities around the country.
- A total of **1728** people are currently in quarantine, with **142** new admissions.



- A highest peak of **3463 (12.3%)** cases was recorded during week 53 (Figure 2).

Figure 2: Epi-curve for confirmed COVID-19 cases, As of 09 January 2021

VARIABLES	TOTAL
Total samples received by the Laboratory	226592
Total samples tested	216471
Total samples re-tested	10003
Total positive results	28259
Total negative results	188154
Total samples discarded	117
Invalid results	1
Total pending results	0
Indeterminant/Inconclusive	58
Suspected cases in 24 hours (excludes re-tests)	2490

- To date, **226474** tests (including **10003** re-tests) have been conducted by NIP, Path-Care, NAMDEB, UNAM, Namib Poultry and Central Veterinary laboratories.
- Since the beginning of the outbreak, **51967** contacts of confirmed cases have been identified, **359** new contacts were identified within the last 24 hours from 11 regions.
- Cumulatively, **45318** contacts have completed their monitoring period, while a total of **6034 (21.4%)** contacts of confirmed cases have tested positive.
- Today, **4743 (74%)** out of **6410** active contacts monitored.

PUBLIC HEALTH ACTION(S)

- Public awareness on COVID-19 prevention measures is ongoing.
- The government and developmental partners continue to prioritise continuation of essential health services.

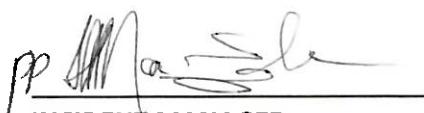
CHALLENGES

- Lack of isolation units and facilities in the regions.
- Non-adherence to COVID-19 prevention measures by the general public.

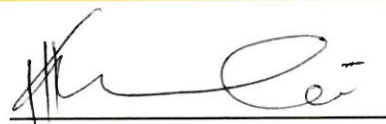
RECOMMENDATIONS

- Establish fully equipped isolation units and facilities throughout the country.
- Continue to give awareness on the importance of adhering to COVID -19 prevention measures; with the involvement of the Security Cluster.

APPROVED



INCIDENT MANAGER
09 JANUARY 2021



SECRETARIAT

For enquiries, please contact
Namibia Public Health Emergency Operations Centre:

 PHEOC@mhss.gov.na
 0800 100 100
 0851 100 100