



NAMIBIA COVID-19 SITUATION REPORT NO. 288

Outbreak Name	COVID-19 outbreak	Country affected	Namibia
Date & Time	31.12.2020 17h00	Investigation start Date	13 March 2020
Prepared by	Surveillance Team		

HIGHLIGHTS/SITUATION UPDATE (31/12/2020)

TOTAL

Tested 209020

Confirmed 24545

Active 3607

Recovered 20727

Death 208

TODAY

Tested 2174

Confirmed 604

Active 3607

Recovered 651

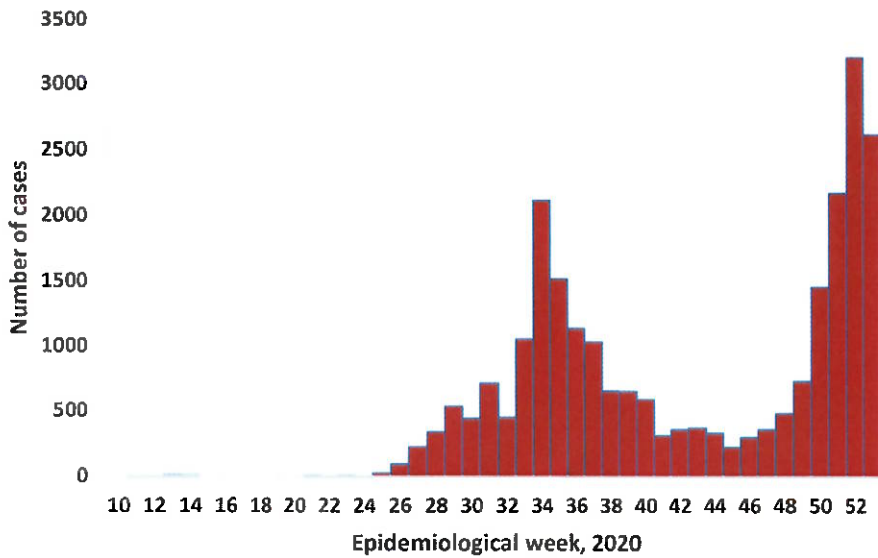
Death 3

- A total of **24545** cases have been recorded to-date, representing **1%** of the population.
- More male cases **12031 (51.5%)** were recorded compared to female cases **11914 (48.5%)**.
- Of the total confirmed cases, **1065 (4.3%)** Health Workers (HWs) have tested positive for COVID-19 to-date.
 - 778 (73.1%) State; 283 (26.6%) Private, 4 (0.4%) Non-Governmental Organizations.
 - 747 (70.1%) recoveries and 3 (0.3%) deaths.
- The recovery rate now stands at **84.4%**.
- All fourteen (14) regions have reported confirmed cases; Khomas and Erongo regions reported the highest with **11776 (48.0%)** and **5495 (22.4%)** respectively.
- Of the total fatalities, **162 (78%)** are COVID-19 deaths while **46 (22%)** are COVID-19 related deaths.

Table 1: Distribution of confirmed COVID-19 cases by region, 31 December 2020

Region	Total No. of cases	Active cases	Recoveries	Cumulative Deaths	Deaths in 24 hours	Cumulative deaths with co-morbidities	Non-COVID deaths	Health Workers
Erongo	5495	662	4779	53	1	49	1	118
Hardap	1006	126	873	7	0	5	0	28
//Kharas	1434	459	966	9	1	7	0	58
Kavango East	322	80	239	3	0	2	0	27
Kavango West	15	7	7	1	0	1	0	1
Khomas	11776	1165	10515	96	0	90	0	598
Kunene	491	135	352	4	0	4	0	27
Ohangwena	329	69	257	2	0	0	1	12
Omaheke	267	78	184	5	0	4	0	12
Omusati	195	28	164	3	0	2	0	11
Oshana	1345	386	948	11	0	9	0	94
Oshikoto	709	155	552	1	0	1	1	27
Otjozondjupa	1030	212	807	11	1	7	0	37
Zambezi	131	45	84	2	0	2	0	15
Total	24545	3607	20727	208	3	183	3	1065

EPIDEMIOLOGICAL SITUATION IN NAMIBIA



➤ A highest peak of **3209 (13.1%)** cases was recorded during week 52 (Figure 1).

➤ The National Call center continues operation for 24 hours daily.

Today (31/12/2020) **795** calls were answered including **69** alerts.

Figure 1: Epi-curve for confirmed COVID-19 cases, As of 31 December 2020

Table 2: COVID-19 specimen recorded at the Laboratories As of 31 December 2020

VARIABLES	TOTAL
Total samples received by the Laboratory	209138
Total samples tested	200203
Total samples re-tested	8817
Total positive results	24545
Total negative results	175600
Total samples discarded	117
Invalid results	1
Total pending results	0
Indeterminant/Inconclusive	58
Suspected cases in 24 hours (excludes re-tests)	1946

➤ To date, **209020** tests (including **8817** re-tests) have been conducted by NIP, Path-Care, NAMDEB, UNAM, Namib Poultry and Central Veterinary laboratories.

➤ Since the beginning of the outbreak, **47912** contacts of confirmed cases have been identified, **516** new contacts were identified within the last 24 hours from 9 regions.

➤ Cumulatively, **41258** contacts have completed their monitoring period, while a total of **5521 (22.5%)** contacts of confirmed cases have tested positive.

➤ Today, **4791 (76.1%)** out of **6294** active contacts monitored.

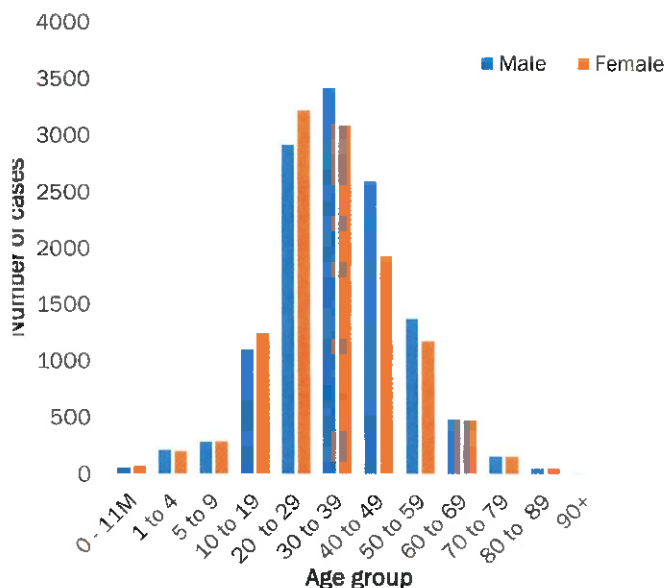


Figure 2: Age and Sex distribution of COVID-19 confirmed cases, as of 31 December 2020

➤ Of the total confirmed cases, **17179 (70.0%)** are in the 20-49 years age-brackets which constitutes the majority of the recorded cases.

➤ A total of **2909 (11.9%)** of the confirmed cases are among the 5-19 years category.

➤ The under 5 years age group make **534 (2.2%)** of the total cases whereas, **1374 (5.6%)** are above 60 years of age.

Table 3: Number of people in mandatory quarantine facilities, 31 December 2020

Region	Newly quarantined 24 Hrs.	Cumulative number	Number discharged	Number in quarantine now	Truck Drivers quarantined in 24 hrs.
Erongo	0	4529	4477	52	0
Hardap	14	1090	1023	67	0
Kavango	0	912	898	14	0
Khomas	5	3074	3053	21	0
//Kharas	0	3897	3791	106	0
Kunene	54	1893	1272	621	0
Ohangwena	13	588	581	7	0
Omaheke	9	2114	1975	139	0
Omusati	4	488	465	23	0
Oshana	3	381	375	6	0
Oshikoto	203	4107	3560	547	0
Otjozondjupa	0	1071	1032	39	0
Zambezi	0	1210	1180	30	0
Total	305	25354	23682	1672	0

➤ Since March 2020, **25354** people have been placed into mandatory quarantine facilities around the country.

➤ A total of **1672** people are currently in quarantine, with **305** new admissions.

PUBLIC HEALTH ACTION(S)

➤ Public awareness on COVID-19 prevention measures is ongoing.

➤ The government and developmental partners continue to prioritise continuation of essential health services.

CHALLENGES

➤ Lack of isolation units and facilities in the regions.

➤ Non-adherence to COVID-19 prevention measures by the general public.

RECOMMENDATIONS

➤ Establish fully equipped isolation units and facilities throughout the country.

➤ Continue to give awareness on the importance of adhering to COVID -19 prevention measures; with the involvement of the Security Cluster.

Approved


 Incident Manager
 31 December 2020


 Secretariat

For enquiries, please contact
 Namibia Public Health Emergency Operations Centre:

 PHEOC@mhss.gov.na
 0800 100 100
 0851 100 100