



NAMIBIA COVID-19 SITUATION REPORT NO. 320

Outbreak Name	COVID-19 outbreak	Country affected	Namibia
Date & Time	01.02.2021 17h00	Investigation start Date	13 March 2020
Prepared by	Surveillance Team		

HIGHLIGHTS/SITUATION UPDATE (01/02/2021)

TOTAL

Tested 265633

Confirmed 34270

Active 1169

Recovered 32739

Death 355

TODAY

Tested 835

Confirmed 102

Active 1169

Recovered 175

Death 2

- A total of **34270** cases have been recorded to-date, representing **1%** of the population.
- More male cases **17334 (51%)** were recorded compared to female cases **16936 (49%)**.
- Of the total confirmed cases, **1626 (5%)** Health Workers (HWs) have tested positive for COVID-19 to-date.
 - 1252 (77%) State; 370 (23%) Private, 4 (0.2%) Non-Governmental Organizations.
 - 1463 (90%) recoveries and 6 (0.4%) deaths.
- The recovery rate now stands at **96%**.
- All fourteen (14) regions have reported confirmed cases; Khomas and Erongo regions reported the highest with **14371 (42%)** and **6984 (20%)** respectively.
- Of the total fatalities, **288 (81%)** are COVID-19 deaths while **67 (19%)** are COVID-19 related deaths.

Table 1: Distribution of confirmed COVID-19 cases by region, 01 February 2021

Region	Total No. of cases	Active cases	Recoveries	Cumulative Deaths	Cumulative deaths with co-morbidities	Non-COVID deaths	Health Workers
Erongo	6984	156	6745	79	76	4	181
Hardap	1401	44	1345	12	12	0	34
//Kharas	2250	15	2215	19	16	0	100
Kavango East	847	242	595	10	7	0	82
Kavango West	49	18	29	2	2	0	1
Khomas	14371	72	14157	143	134	0	724
Kunene	871	39	827	5	5	0	45
Oshana	615	52	552	9	6	2	36
Omaheke	663	43	611	9	6	0	33
Omusati	594	32	558	4	2	0	28
Oshana	2252	215	2014	23	18	0	165
Oshikoto	1290	78	1206	5	5	1	87
Otjozondjupa	1652	59	1565	28	21	0	80
Zambezi	431	104	320	7	5	0	30
Total	34270	1169	32739	355	315	7	1626

EPIDEMIOLOGICAL SITUATION IN NAMIBIA

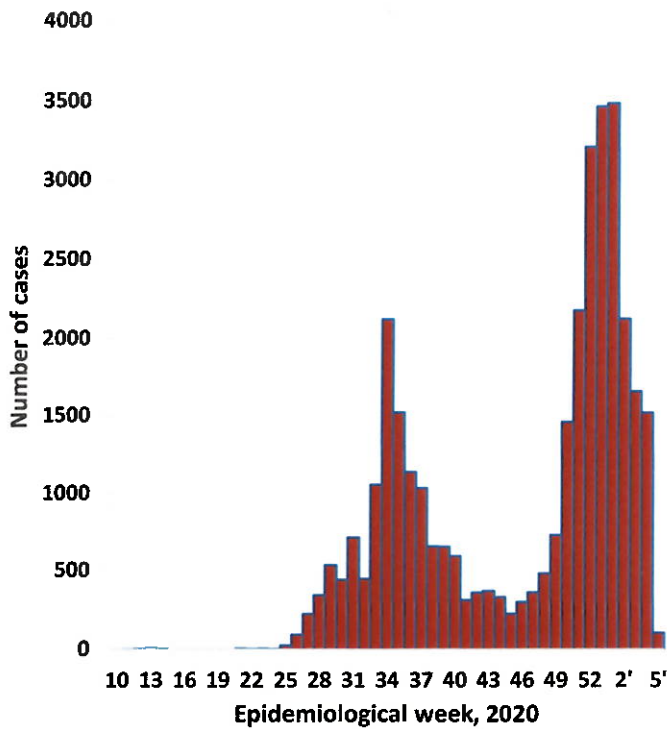


Figure 1: Epi-curve for confirmed COVID-19 cases As of 01 February 2021

- A highest peak of **3485 (10%)** cases was recorded during week 53 (Figure 1).

The National Call Center continues operations for 24 hours daily.

Today (01/02/2021), **709** calls were answered including **81** alerts.

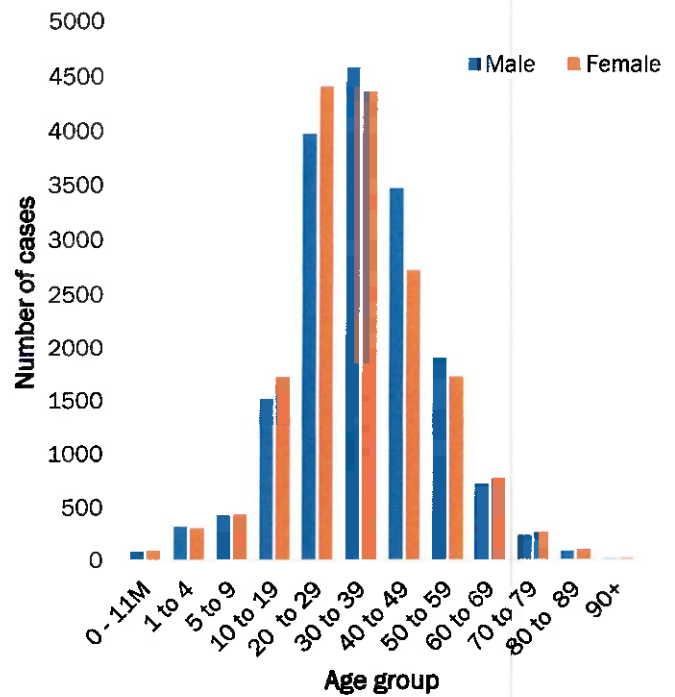


Figure 2: Age and Sex distribution of COVID-19 confirmed cases, as of 01 February 2021

- Of the total confirmed cases, **23525 (69%)** are in the 20-49 years age-brackets which constitutes the majority of the recorded cases.
- A total of **4109 (12%)** of the confirmed cases are among the 5-19 years category.
- The under 5 years age group make **798 (2%)** of the total cases whereas, **2207 (6%)** are above 60 years of age.

Table 2: COVID-19 specimen recorded at the Laboratories As of 01 February 2021

VARIABLES	TOTAL
Total samples received by the Laboratory	265750
Total samples tested	254360
Total samples re-tested	11273
Total positive results	34270
Total negative results	220037
Total samples discarded	117
Invalid results	0
Total pending results	46
Indeterminant/Inconclusive	7
Suspected cases in 24 hours (excludes re-tests)	833

- To date, **265633** tests (including **11273** re-tests) have been conducted by NIP, Path-Care, NAMDEB, UNAM, Namib Poultry and Central Veterinary laboratories.
- Since the beginning of the outbreak, **62108** contacts of confirmed cases have been identified, **460** new contacts were identified within the last 24 hours from 12 regions.
- Cumulatively, **57179** contacts have completed their monitoring period, while a total of **7777 (23%)** contacts of confirmed cases have tested positive.
- Today, **3222 (69%)** out of **4655** active contacts monitored.

**Table 3: Number of people in mandatory quarantine facilities
01 February 2021**

Region	Newly quarantined 24 Hrs.	Cumulative number	Number discharged	Number in quarantine now
Erongo	0	4977	4888	89
Hardap	2	1303	1286	17
Kavango	0	1030	1019	11
Khomas	0	3145	3140	5
//Kharas	0	4760	4610	150
Kunene	2	2674	2592	82
Ohangwena	7	616	608	8
Omaheke	0	3158	2946	212
Omusati	0	540	534	6
Oshana	0	393	393	0
Oshikoto	0	6045	5575	470
Otjozondjupa	0	1334	1321	13
Zambezi	1	1323	1314	9
Total	12	31298	30226	1072

- Since March 2020, **31298** people have been placed into mandatory quarantine facilities around the country.
- A total of **1072** people are currently in quarantine, with **12** new admissions.

PUBLIC HEALTH ACTION(S)

- Mechanisms are underway on how to roll out the vaccine nationwide once it is made available.
- Public awareness on COVID-19 prevention measures is ongoing.
- The government and developmental partners continue to prioritise continuation of essential health services.

CHALLENGES


- Lack of isolation units and facilities in the regions.
- Non-adherence to COVID-19 prevention measures by the general public.

RECOMMENDATIONS

- Establish fully equipped isolation units and facilities throughout the country.
- Continue to give awareness on the importance of adhering to COVID -19 prevention measures; with the involvement of the Security Cluster.


APPROVED


INCIDENT MANAGER
01 February 2021


SECRETARIAT

For enquiries, please contact
Namibia Public Health Emergency Operations Centre;

 PHEOC@mhss.gov.na

 0800 100 100

 0851 100 100