



## NAMIBIA COVID-19 SITUATION REPORT NO. 325

<b>Outbreak Name</b>	COVID-19 outbreak	<b>Country affected</b>	Namibia
<b>Date &amp; Time</b>	06.02.2021 17h00	<b>Investigation start Date</b>	13 March 2020
<b>Prepared by</b>	Surveillance Team		

### HIGHLIGHTS/SITUATION UPDATE (06/02/2021)



- A total of **34973** cases have been recorded to-date, representing **1%** of the population.
- More male cases **17717 (51%)** were recorded compared to female cases **17256 (49%)**.
- Of the total confirmed cases, **1655 (5%)** Health Workers (HWs) have tested positive for COVID-19 to-date.
  - 1272 (77%) State; 375 (23%) Private, 4 (0.2%) Non-Governmental Organizations.
  - 1598 (97%) recoveries and 6 (0.4%) deaths.
- The recovery rate now stands at **96%**.
- All fourteen (14) regions have reported confirmed cases; Khomas and Erongo regions reported the highest with **14564 (42%)** and **7123 (20%)** respectively.
- Of the total fatalities, **304 (81%)** are COVID-19 deaths while **71 (19%)** are COVID-19 related deaths.

**Table 1: Distribution of confirmed COVID-19 cases by region, 06 February 2021**

Region	Total No. of cases	Active cases	Recoveries	Cumulative Deaths	Cumulative deaths with co-morbidities	Non-COVID deaths	Health Workers
Erongo	7123	223	6816	80	77	4	185
Hardap	1430	24	1394	12	12	0	35
//Karas	2271	20	2228	22	18	0	101
Kavango East	892	251	630	11	8	0	85
Kavango West	67	36	29	2	2	0	1
Khomas	14564	94	14318	153	143	0	732
Kunene	878	31	842	5	5	0	45
Ohangwena	634	34	586	12	9	2	38
Omaheke	694	55	630	9	6	0	35
Omusati	614	28	582	4	2	0	29
Oshana	2318	37	2258	23	18	0	168
Oshikoto	1330	117	1206	6	6	1	90
Otjozondjupa	1704	60	1615	29	22	0	81
Zambezi	454	127	320	7	5	0	30
<b>Total</b>	<b>34973</b>	<b>1137</b>	<b>33454</b>	<b>375</b>	<b>333</b>	<b>7</b>	<b>1655</b>

**Table 2: COVID-19 specimen recorded at the Laboratories As of 06 February 2021**

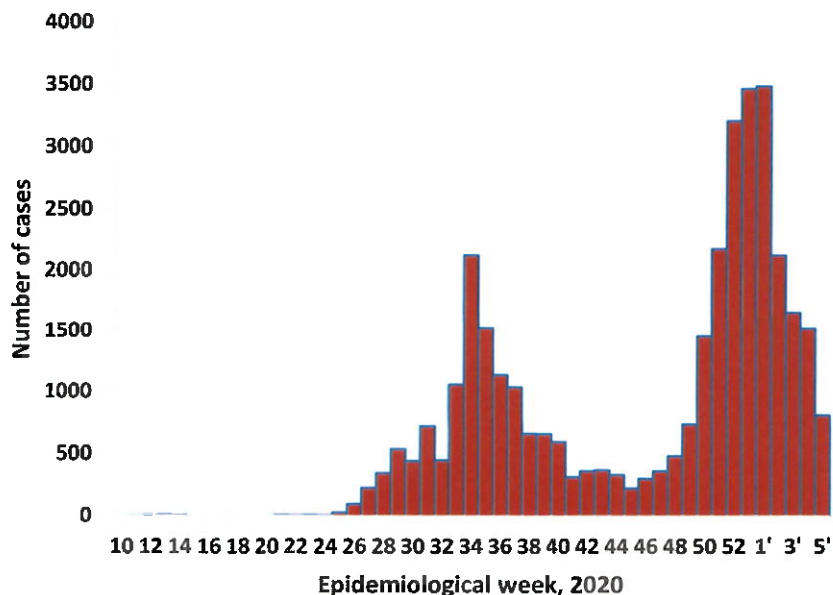
VARIABLES	TOTAL
Total samples received by the Laboratory	271870
Total samples tested	260402
Total samples re-tested	11351
Total positive results	34973
Total negative results	225376
Total samples discarded	117
Invalid results	0
Total pending results	46
Indeterminant/Inconclusive	7
Suspected cases in 24 hours (excludes re-tests)	1027

- To date, **271753** tests (including **11351** re-tests) have been conducted by NIP, Path-Care, NAMDEB, UNAM, Namib Poultry and Central Veterinary laboratories.
- Since the beginning of the outbreak, **63434** contacts of confirmed cases have been identified, **97** new contacts were identified within the last 24 hours from 10 regions.
- Cumulatively, **59172** contacts have completed their monitoring period, while a total of **8023 (23%)** contacts of confirmed cases have tested positive.
- Today, **13 (0.3%)** out of **3727** active contacts monitored.

**Table 3: Number of people in mandatory quarantine facilities, 06 February 2021**

Region	Newly quarantined 24 Hrs.	Cumulative number	Number discharged	Number in quarantine now
Erongo	0	5158	4933	225
Hardap	0	1316	1301	15
Kavango	3	1064	1032	32
Khomas	0	3159	3147	12
//Kharas	0	4760	4637	123
Kunene	0	2707	2637	70
Ohangwena	0	616	610	6
Omaheke	3	3262	3099	163
Omusati	0	541	541	0
Oshana	0	394	393	1
Oshikoto	0	6577	6117	460
Otjozondjupa	0	1334	1321	13
Zambezi	0	1333	1320	13
<b>Total</b>	<b>6</b>	<b>32221</b>	<b>31088</b>	<b>1133</b>

- Since March 2020, **32221** people have been placed into mandatory quarantine facilities around the country.
- A total of **1133** people are currently in quarantine, with **6** new admissions.

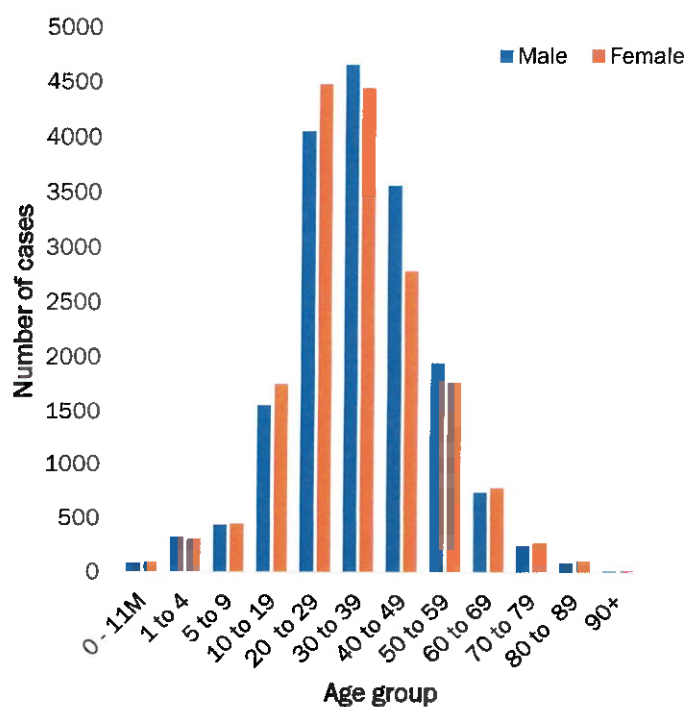


- A highest peak of **3485 (10%)** cases was recorded during week 53 (Figure 1).

The National Call Center continues operations for 24 hours daily.

Today (06/02/2021), **829** calls were answered including **100** alerts.

**Figure 1: Epi-curve for confirmed COVID-19 cases, As of 06 February 2021**



**Figure 2: Age and Sex distribution of COVID-19 confirmed cases, as of 06 February 2021**

- Of the total confirmed cases, **23982 (69%)** are in the 20-49 years age-brackets which constitutes the majority of the recorded cases.
- A total of **4204 (12%)** of the confirmed cases are among the 5-19 years category.
- The under 5 years age group make **815 (2%)** of the total cases whereas, **2267 (6%)** are above 60 years of age.

#### PUBLIC HEALTH ACTION(S)

- Mechanisms are underway on how to roll out the vaccine nationwide once it is made available.
- Public awareness on COVID-19 prevention measures is ongoing.
- The government and developmental partners continue to prioritise continuation of essential health services.

#### CHALLENGES

- Non-adherence to COVID-19 prevention measures by the general public.

#### RECOMMENDATIONS

- Continue to give awareness on the importance of adhering to COVID -19 prevention measures; with the involvement of the Security Cluster.

APPROVED

INCIDENT MANAGER

06 February 2021

SECRETARIAT

For enquiries, please contact  
Namibia Public Health Emergency Operations Centre;

[PHEOC@mhss.gov.na](mailto:PHEOC@mhss.gov.na)

0800 100 100

0851 100 100