



NAMIBIA COVID-19 SITUATION REPORT NO. 348

Outbreak Name	COVID-19 outbreak	Country affected	Namibia
Date & Time	01.03.2021 17h00	Investigation start Date	13 March 2020
Prepared by	Surveillance Team		

HIGHLIGHTS/SITUATION UPDATE (01/03/2021)

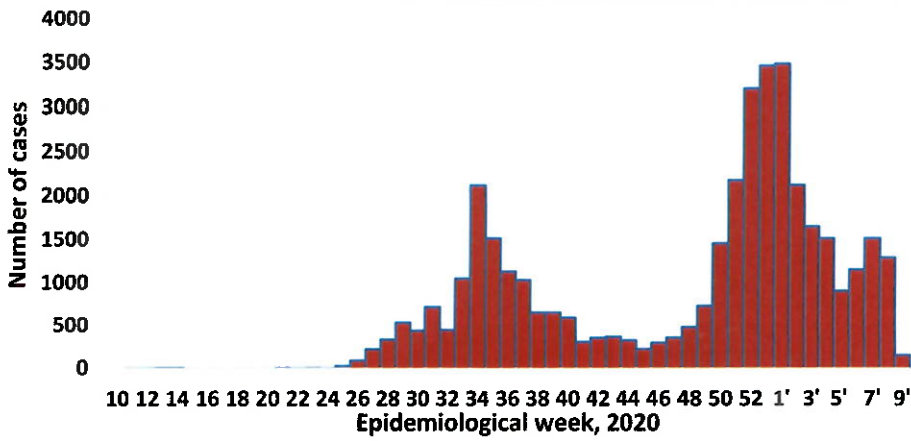
TOTAL	TODAY
Tested 302303	Tested 949
Confirmed 39182	Confirmed 149
Active 2246	Active 2246
Recoveries 36498	Recoveries 163
Death 430	Death 2

- A total of **39182** cases have been recorded to-date, representing **2%** of the population.
- More male cases **19876 (51%)** were recorded compared to female cases **19307 (49%)**.
- Of the total confirmed cases, **1762 (4%)** are Health Workers (HWs).
 - 1367 (78%) State; 391 (22%) Private, 4 (0.2%) Non-Governmental Organizations.
 - 1686 (96%) recoveries and 6 (0.3%) deaths.
- The recovery rate now stands at **93%**.
- All fourteen (14) regions have reported confirmed cases; **Khomas and Erongo** regions reported the highest with **15299 (39%)** and **7471 (19%)** respectively.
- Of the total fatalities, **340 (79%)** are COVID-19 deaths while **90 (21%)** are COVID-19 related deaths.

Table 1: Distribution of confirmed COVID-19 cases by region, 01 March 2021

Region	Total No. of cases	Active cases	Recoveries	Cumulative Deaths	Cumulative deaths with co-morbidities	Non-COVID deaths	Health Workers
Erongo	7471	217	7160	90	86	4	197
Hardap	1596	53	1525	18	14	0	35
//Kharas	2480	127	2325	28	24	0	105
Kavango East	1375	387	973	15	11	0	92
Kavango West	164	21	141	2	2	0	6
Khomas	15299	120	15017	162	149	0	761
Kunene	936	78	849	9	9	0	47
Ohangwena	820	70	735	13	10	2	46
Omaheke	830	85	734	11	8	0	37
Omusati	1010	86	919	5	3	0	30
Oshana	2526	194	2306	26	21	0	183
Oshikoto	2140	488	1641	9	9	2	97
Otjozondjupa	1957	70	1853	34	26	0	92
Zambezi	578	250	320	8	6	0	34
Total	39182	2246	36498	430	378	8	1762

EPIDEMIOLOGICAL SITUATION IN NAMIBIA



➤ A highest peak of **3485 (9%)** cases was recorded during week 1 in 2021 (Figure 1).

The National Call Center continues operations for 24 hours daily.

Today (01/03/2021), **597** calls were answered including **65** alerts.

Figure 1: Epi-curve for confirmed COVID-19 cases, 01 March 2021

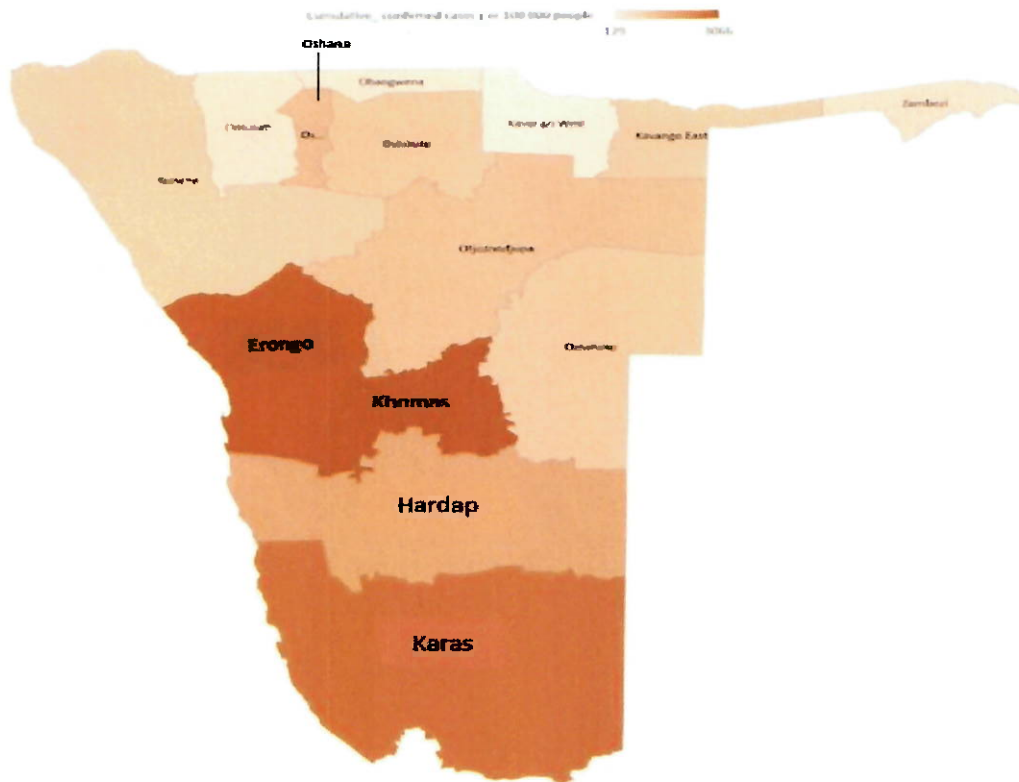


Figure 2: Distribution of cumulative confirmed cases per 100 000 by region, 01 March 2021

- Of the total confirmed cases, **25872 (66%)** are in the 20-49 years age-brackets which constitutes the majority of the recorded cases.
- A total of **5908 (15%)** of the confirmed cases are among the 5-19 years category.
- The under 5 years age group make up **889 (2%)** of the total cases whereas, **2452 (6%)** are above 60 years of age.

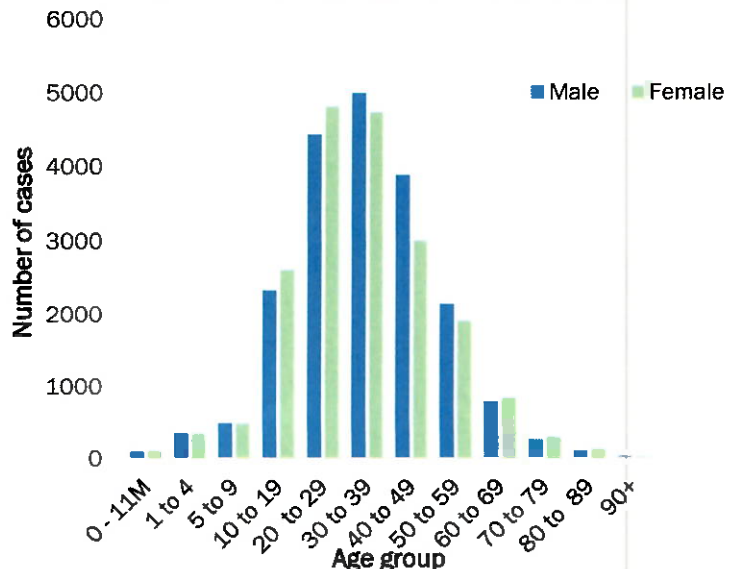


Figure 3: Age and Sex distribution of COVID-19 confirmed cases, 01 March 2021

Table 2: COVID-19 specimen recorded at the Laboratories, 01 March 2021

VARIABLES	TOTAL
Total samples received by the Laboratory	302420
Total samples tested	290755
Total samples re-tested	11548
Total positive results	39182
Total negative results	251520
Total samples discarded	117
Invalid results	0
Total pending results	46
Indeterminant/Inconclusive	7
Suspected cases in 24 hours (excludes re-tests)	941

- To date, **302303** tests (including **11548** re-tests) have been conducted by NIP, Path-Care, NAMDEB, UNAM, Namib Poultry and Central Veterinary laboratories.
- Since the beginning of the outbreak, **70366** contacts of confirmed cases have been identified, **217** new contacts were identified within the last 24 hours from 12 regions.
- Cumulatively, **66295** contacts have completed their monitoring period, while a total of **9576 (24%)** contacts of confirmed cases have tested positive.
- Today, **2327 (64%)** out of **3647** active contacts monitored.

Table 3: Number of people in mandatory quarantine facilities, 01 March 2021

Region	Newly quarantined 24 Hrs.	Cumulative number	Number discharged	Number in quarantine now
Erongo	0	5158	4933	225
Hardap	2	1413	1410	3
Kavango	0	1119	1092	27
Khomas	0	3292	3206	86
//Kharas	0	4760	4637	123
Kunene	8	3141	2958	183
Ohangwena	0	644	634	10
Omaheke	14	3962	3773	189
Omusati	0	551	549	2
Oshana	0	400	399	1
Oshikoto	48	8772	7981	791
Otjondjupa	0	1403	1386	17
Zambezi	0	1382	1344	38
Total	72	35997	34302	1695

- Since March 2020, **35997** people have been placed into mandatory quarantine facilities around the country.
- A total of **1695** people are currently in quarantine, with **72** new admissions.

PUBLIC HEALTH ACTION(S)

- Mechanisms are underway on how to roll out the vaccine nationwide once it is made available.
- The government and developmental partners continue to prioritise the continuation of essential health services.

CHALLENGES

- Non-adherence to COVID-19 prevention measures by the general public.

APPROVED



INCIDENT MANAGER
01 MARCH 2021

RECOMMENDATIONS


- Continue to give awareness on the importance of adhering to COVID -19 prevention measures; with the involvement of the Security Cluster.




SECRETARIAT

For enquiries, please contact
Namibia Public Health Emergency Operations Centre;

 PHEOC@mhss.gov.na

 0800 100 100

 0851 100 100