



NAMIBIA COVID-19 SITUATION REPORT NO. 397

Outbreak Name	COVID-19 outbreak	Country affected	Namibia
Date & Time	19.04.2021 17h00	Investigation start Date	13 March 2020
Prepared by	Surveillance Team		

HIGHLIGHTS/SITUATION UPDATE (19/04/2021)

CUMULATIVE

Tested 370183

Confirmed 46875

Active 1303

Recoveries 44953

Deaths 608

TOTAL TODAY

Tested 1481

Confirmed 102

Active 1303

Recoveries 193

Deaths 4

- A total of **46875** cases have been recorded to-date, representing **2%** of the population.
- Cases are equally distributed by gender at **50%**.
- Of the total confirmed cases, **2020 (4%)** are Health Workers.
 - 1590 (79%) State; 426 (21%) Private, 4 (0.2%) Non-Governmental Organizations.
 - 2005 (99%) recoveries and 6 (0.3%) deaths.
- The recovery rate now stands at **96%**.
- All fourteen (14) regions have reported confirmed cases; *Khomas* and *Erongo* regions reported the highest with **16807 (36%)** and **8394 (18%)** respectively.
- Of the total fatalities, **494 (81%)** are COVID-19 deaths while **114 (19%)** are COVID-19 related deaths.

Table 1: Distribution of confirmed COVID-19 cases by region, 19 April 2021

Region	Total No. of cases	Active cases	Recoveries	Cumulative Deaths	Cumulative deaths with co-morbidities	Non-COVID deaths	Vaccine data	Health Workers
Erongo	8394	231	8044	114	107	5	1202	221
Hardap	2544	130	2377	37	25	0	0	63
//Kharas	2905	51	2814	40	32	0	82	126
Kavango East	1874	42	1809	23	18	0	0	114
Kavango West	227	1	224	2	2	0	0	12
Khomas	16807	407	16179	220	196	1	3869	817
Kunene	1359	52	1293	14	14	0	0	53
Ohangwena	1189	60	1111	16	13	2	0	57
Omaheke	1028	10	1004	14	11	0	0	44
Omusati	1241	34	1198	9	6	0	37	34
Oshana	2880	42	2803	34	22	1	0	216
Oshikoto	2623	70	2533	18	18	2	0	118
Otjozondjupa	3082	168	2858	56	44	0	0	109
Zambezi	722	5	706	11	8	0	10	36
Total	46875	1303	44953	608	516	11	5200	2020

EPIDEMIOLOGICAL SITUATION IN NAMIBIA

Table 2: Number of people in mandatory quarantine facilities, 19 April 2021

Region	Newly quarantined 24 Hrs.	Cumulative number	Number discharged	Number in quarantine now
Erongo	41	5348	5290	58
Hardap	5	1632	1611	21
Kavango	0	1322	1320	2
Khomas	0	3415	3402	13
//Kharas	0	5722	5547	175
Kunene	0	4629	4468	161
Ohangwena	0	692	692	0
Omaheke	0	5297	5164	133
Omusati	0	565	565	0
Oshana	0	400	400	0
Oshikoto	108	11586	11033	553
Otjozondjupa	0	1476	1453	23
Zambezi	0	1702	1563	139
Total	154	43786	42508	1278

- Since March 2020, **43786** people have been placed into mandatory quarantine facilities around the country.
- A total of **1278** people are currently in quarantine, with **154** new admissions.

- Of the total confirmed cases, **29681 (63%)** are in the 20-49 years age-brackets which constitutes the majority of the recorded cases.
- A total of **8191 (17%)** of the confirmed cases are among the 5-19 years category.
- The under 5 years age group make up **1072 (2%)** of the total cases whereas, **3036 (6%)** are above 60 years of age.

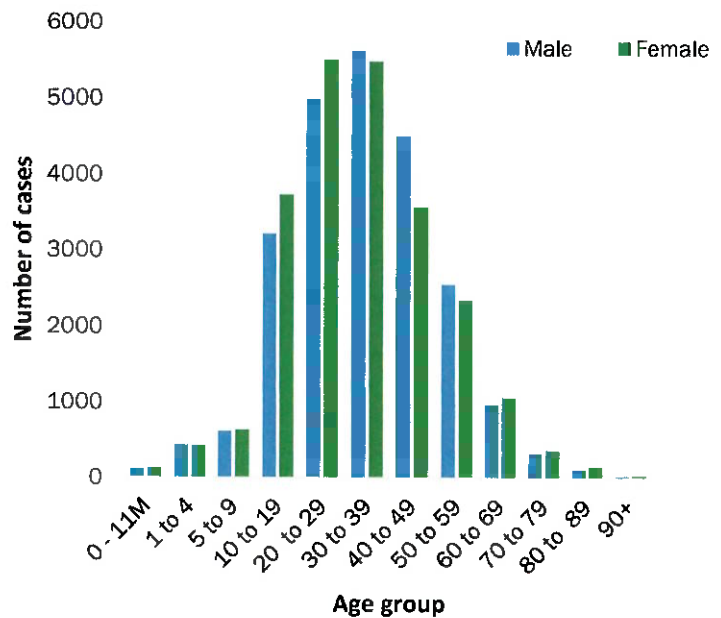


Figure 1: Age and Sex distribution of COVID-19 confirmed cases 19 April 2021

Table 3: COVID-19 specimen recorded at the Laboratories 19 April 2021

VARIABLES	TOTAL
Total samples received by the Laboratory	370300
Total samples tested	358307
Total samples re-tested	11876
Total positive results	46875
Total negative results	311379
Total samples discarded	117
Invalid results	0
Total pending results	46
Indeterminant/Inconclusive	7
Suspected cases in 24 hours (excluding re-tests)	1475

- To date, **370183** tests (including **11876** re-tests) have been conducted by NIP, Path-Care, NAMDEB, UNAM, Namib Poultry, Diagno, NAMPath, Namibia Central Pathology and Central Veterinary laboratories
- Since the beginning of the outbreak, **85722** contacts of confirmed cases have been identified, **164** new contacts were identified within the last 24 hours from 11 regions.
- Cumulatively, **81380** contacts have completed their monitoring period, while a total of **11728 (25%)** contacts of confirmed cases have tested positive.
- Today, **2427 (69%)** out of **3524** active contacts monitored.

➤ The highest peaks of **3463 (7%)** and **3485 (7%)** cases were recorded during week 53 of 2020 and 1 of 2021 respectively (Figure 2).

➤ The National Call Center continues operations for 24 hours daily.

➤ Today (19/04/2021), **472** calls were answered including **17** alerts.

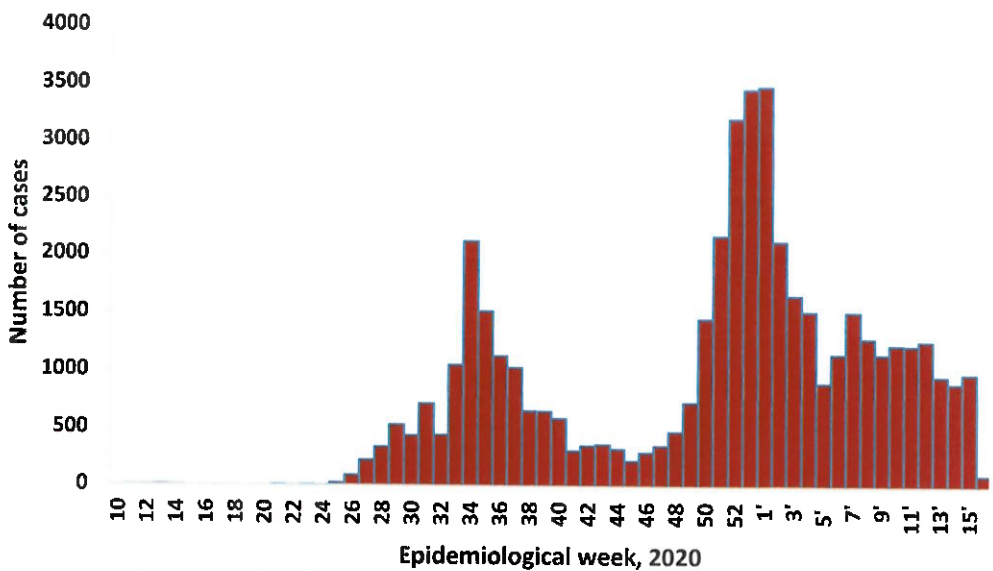
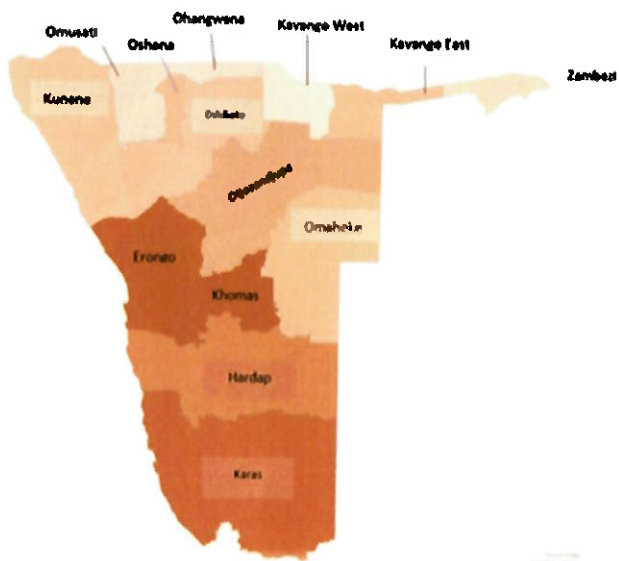


Figure 2: Epi-curve for confirmed COVID-19 cases, 19 April 2021



Cumulative_confirmed cases per 100 000 people

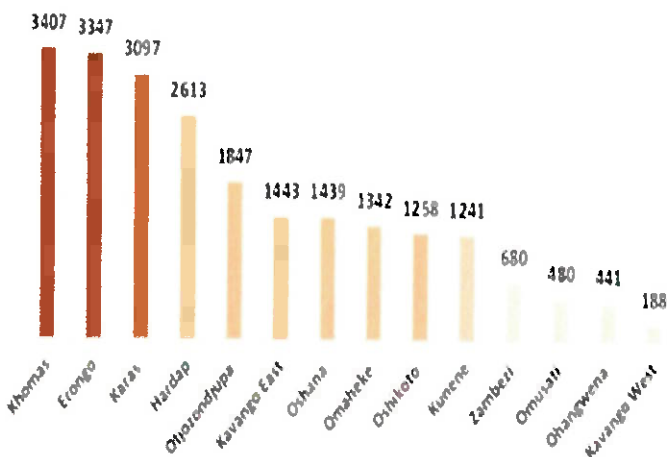


Figure 3: Distribution of cumulative confirmed cases per 100 000 by region, 19 April 2021

PUBLIC HEALTH ACTION (S)

- The COVID-19 vaccination programme has been extended to other regions and is ongoing.
- The government and developmental partners continue to prioritize the continuation of essential health services.

CHALLENGES

- Lack of isolation units and facilities for cases detected in boarding schools and police holding cells.
- Non-adherence to COVID-19 prevention measures by the general public.

RECOMMENDATIONS

- Establish fully equipped isolation units and facilities for cases detected in schools and police holding cells.
- Continue to give awareness on the importance of adhering to COVID-19 prevention measures; with the involvement of the Security Cluster.

APPROVED

INCIDENT MANAGER
19 APRIL 2021

SECRETARIAT

For enquiries, please contact
Namibia Public Health Emergency Operations Centre;
PHEOC@mhss.gov.na
 0800 100 100
 0851 100 100