



## NAMIBIA COVID-19 SITUATION REPORT NO. 374

<b>Outbreak Name</b>	COVID-19 outbreak	<b>Country affected</b>	Namibia
<b>Date &amp; Time</b>	27.03.2021 17h00	<b>Investigation start Date</b>	13 March 2020
<b>Prepared by</b>	Surveillance Team		

### HIGHLIGHTS/SITUATION UPDATE (27/03/2021)

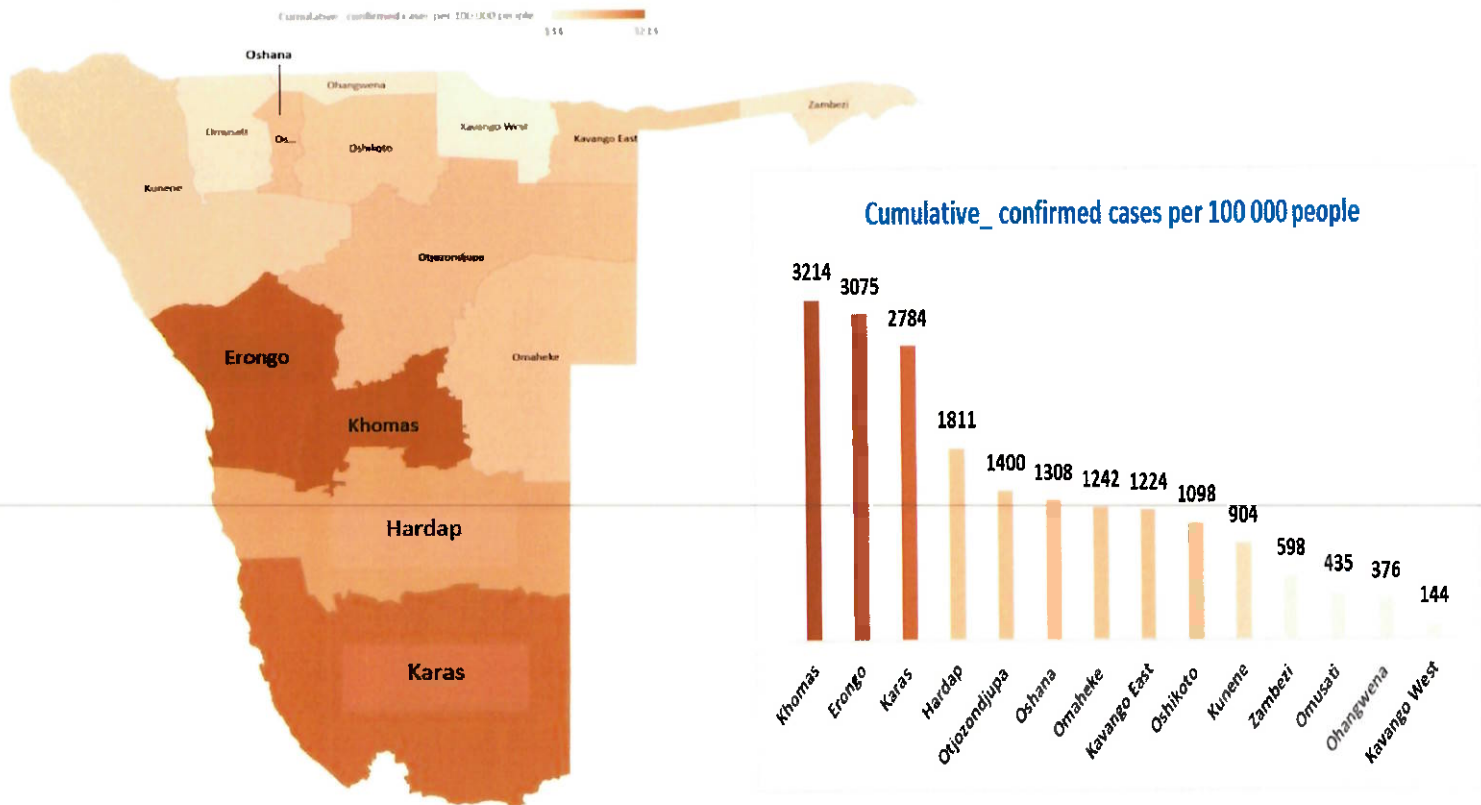
TOTAL	TODAY
Tested 339918	Tested 1385
Confirmed 43632	Confirmed 133
Active 1715	Active 1715
Recovered 41398	Recovered 106
Death 509	Death 1

- A total of **43632** cases have been recorded to-date, representing **2%** of the population.
- More male cases **22000 (50%)** were recorded compared to female cases **21632 (50%)**.
- Of the total confirmed cases, **1941 (4%)** are Health Workers (HWs).
  - 1525 (79%) State; 409 (21%) Private, 4 (0.2%) Non-Governmental Organizations.
  - 1810 (93%) recoveries and 6 (0.3%) deaths.
- The recovery rate now stands at **95%**.
- All fourteen (14) regions have reported confirmed cases; *Khomas and Erongo regions reported the highest with **16192 (37%)** and **7933 (18%)** respectively.*
- Of the total fatalities, **411 (81%)** are COVID-19 deaths while **98 (19%)** are COVID-19 related deaths.

**Table 1: Distribution of confirmed COVID-19 cases by region, 27 March 2021**

Region	Total No. of cases	Active cases	Recoveries	Cumulative Deaths	Cumulative deaths with co-morbidities	Non-COVID deaths	Health Workers
Erongo	7933	251	7578	99	95	5	210
Hardap	1951	244	1678	29	22	0	53
//Kharas	2723	73	2615	35	29	0	122
Kavango East	1734	96	1617	21	16	0	108
Kavango West	186	8	176	2	2	0	11
Khomas	16192	471	15545	176	160	0	795
Kunene	1162	115	1036	11	11	0	53
Ohangwena	1099	45	1036	16	13	2	54
Omaheke	1009	50	945	14	11	0	44
Omusati	1169	20	1141	8	5	0	31
Oshana	2749	48	2669	31	20	1	211
Oshikoto	2441	53	2372	14	15	2	115
Otjozondjupa	2607	227	2337	43	32	0	98
Zambezi	677	14	653	10	7	0	36
<b>Total</b>	<b>43632</b>	<b>1715</b>	<b>41398</b>	<b>509</b>	<b>438</b>	<b>10</b>	<b>1941</b>

# EPIDEMIOLOGICAL SITUATION IN NAMIBIA

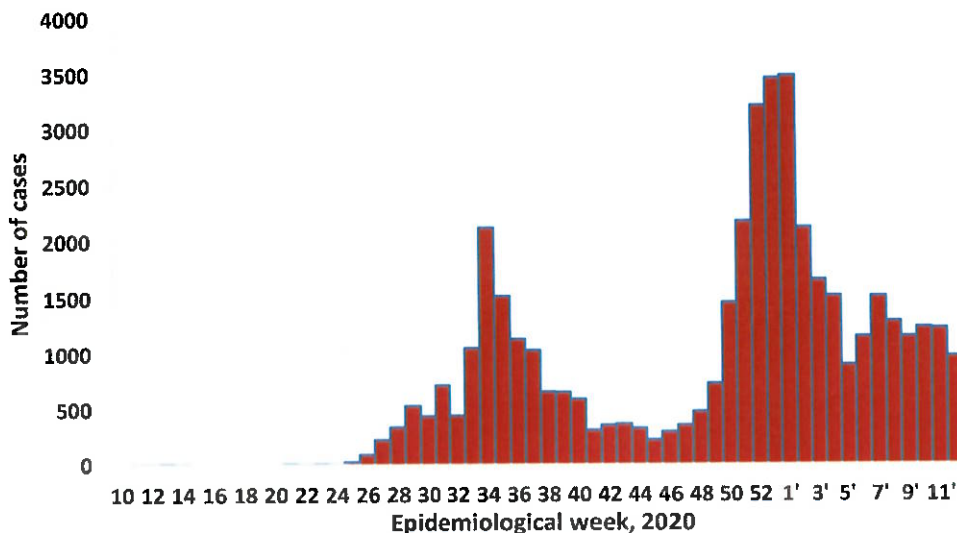


**Figure 1: Distribution of cumulative confirmed cases per 100 000 by region, 27 March 2021**

**Table 2: COVID-19 specimen recorded at the Laboratories, 27 March 2021**

VARIABLES	TOTAL
Total samples received by the Laboratory	340035
Total samples tested	328171
Total samples re-tested	11747
Total positive results	43632
Total negative results	284486
Total samples discarded	117
Invalid results	0
Total pending results	46
Indeterminant/Inconclusive	7
Suspected cases in 24 hours (excludes re-tests)	1382

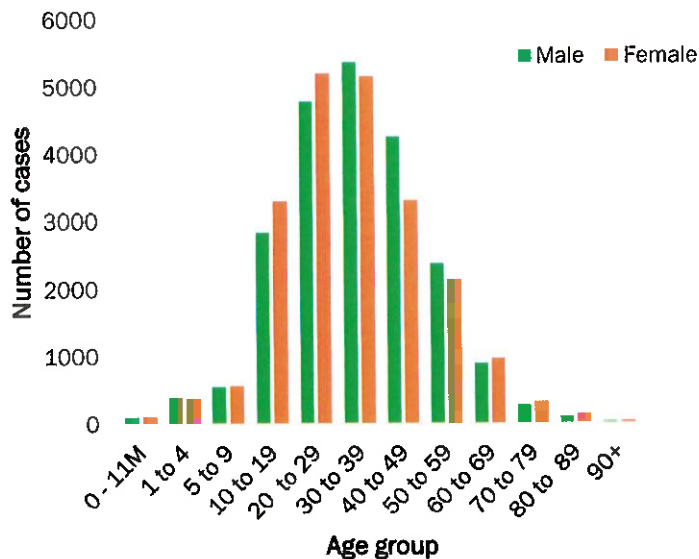
- To date, **339918** tests (including **11747** re-tests) have been conducted by NIP, Path-Care, NAMDEB, UNAM, Namib Poultry, Diagno, NAMPath, Namibia Central Pathology and Central Veterinary laboratories
- Since the beginning of the outbreak, **78993** contacts of confirmed cases have been identified, **154** new contacts were identified within the last 24 hours from 8 regions.
- Cumulatively, **73561** contacts have completed their monitoring period, while a total of **11016 (25%)** contacts of confirmed cases have tested positive.
- Today, **1729 (37%)** out of **4632** active contacts monitored.



- A highest peak of **3485 (8%)** cases was recorded during week 1 in 2021 (Figure 2).

**Figure 2: Epi-curve for confirmed COVID-19 cases, 27 March 2021**

- Of the total confirmed cases, **28075 (64%)** are in the 20-49 years age-brackets which constitutes the majority of the recorded cases.
- A total of **7256 (17%)** of the confirmed cases are among the 5-19 years category.
- The under 5 years age group make up **996 (2%)** of the total cases whereas, **2783 (6%)** are above 60 years of age.



**Figure 3: Age and Sex distribution of COVID-19 confirmed cases 27 March 2021**

**Table 3: Number of people in mandatory quarantine facilities, 27 March 2021**

Region	Newly quarantined 24 Hrs.	Cumulative number	Number discharged	Number in quarantine now
Erongo	0	5193	5170	23
Hardap	4	1526	1514	12
Kavango	0	1277	1266	11
Khomas	0	3369	3358	11
//Kharas	37	5306	4898	408
Kunene	149	4278	3792	486
Ohangwena	0	690	690	0
Omaheke	4	4825	4788	37
Omusati	0	553	553	0
Oshana	0	400	400	0
Oshikoto	0	10624	9898	726
Otjozondjupa	50	1453	1430	23
Zambezi	0	1442	1409	33
<b>Total</b>	<b>244</b>	<b>40936</b>	<b>39166</b>	<b>1770</b>

- Since March 2020, **40936** people have been placed into mandatory quarantine facilities around the country.
- A total of **1770** people are currently in quarantine, with **244** new admissions.

**PUBLIC HEALTH ACTION (S)**

- Honourable Minister of Health and Social Services launched a national COVID-19 vaccination programme in Windhoek.
- The government and developmental partners continue to prioritise the continuation of essential health services.

**CHALLENGES**

- Lack of isolation units and facilities for cases detected in boarding schools.
- Non-adherence to COVID-19 prevention measures by the general public.

**RECOMMENDATIONS**

- Establish fully equipped isolation units and facilities for cases in schools.
- Continue to give awareness on the importance of adhering to COVID -19 prevention measures; with the involvement of

APPROVED

**INCIDENT MANAGER  
27 MARCH**

**SECRETARIAT**

For enquiries, please contact  
**Namibia Public Health Emergency Operations Centre;**

[PHEOC@mhss.gov.na](mailto:PHEOC@mhss.gov.na)

0800 100 100

0851 100 100