



NAMIBIA COVID-19 SITUATION REPORT NO. 393

Outbreak Name	COVID-19 outbreak	Country affected	Namibia
Date & Time	15.04.2021 17h00	Investigation start Date	13 March 2020
Prepared by	Surveillance Team		

HIGHLIGHTS/SITUATION UPDATE (15/04/2021)

CUMULATIVE

Tested 365444

Confirmed 46330

Active 1328

Recoveries 44392

Deaths 599

TOTAL TODAY

Tested 1253

Confirmed 145

Active 1328

Recoveries 70

Deaths 3

- A total of **46330** cases have been recorded to-date, representing **2%** of the population.
- Cases are equally distributed by gender at **50%**.
- Of the total confirmed cases, **2005 (4%)** are Health Workers.
 - 1579 (79%) State; 422 (21%) Private, 4 (0.2%) Non-Governmental Organizations.
 - 1941 (97%) recoveries and 6 (0.3%) deaths.
- The recovery rate now stands at **96%**.
- All fourteen (14) regions have reported confirmed cases; *Khomas and Erongo regions reported the highest with **16680 (36%)** and **8306 (18%)** respectively.*
- Of the total fatalities, **486 (81%)** are COVID-19 deaths while **113 (19%)** are COVID-19 related deaths.

Table 1: Distribution of confirmed COVID-19 cases by region, 15 April 2021

Region	Total No. of cases	Active cases	Recoveries	Cumulative Deaths	Cumulative deaths with co-morbidities	Non-COVID deaths	Vaccine data	Health Workers
Erongo	8306	242	7947	112	106	5	985	221
Hardap	2449	263	2151	35	24	0	0	62
//Kharas	2880	81	2759	40	32	0	0	124
Kavango East	1865	65	1777	23	18	0	0	114
Kavango West	226	23	201	2	2	0	0	12
Khomas	16680	347	16116	216	193	1	3008	812
Kunene	1342	50	1278	14	14	0	0	53
Ohangwena	1165	36	1111	16	13	2	0	55
Omaheke	1022	10	998	14	11	0	0	44
Omusati	1221	15	1197	9	6	0	0	34
Oshana	2875	73	2767	34	22	1	0	216
Oshikoto	2596	43	2533	18	18	2	0	118
Otjozondjupa	2983	70	2858	55	43	0	0	104
Zambezi	720	10	699	11	8	0	0	36
Total	46330	1328	44392	599	510	11	3993	2005

EPIDEMIOLOGICAL SITUATION IN NAMIBIA

➤ The highest peaks of **3463 (7%)** and **3485 (8%)** cases were recorded during week 53 of 2020 and 1 of 2021 respectively (Figure 1).

➤ The National Call Center continues operations for 24 hours daily.

➤ Today (15/04/2021), **472** calls were answered including **17** alerts.

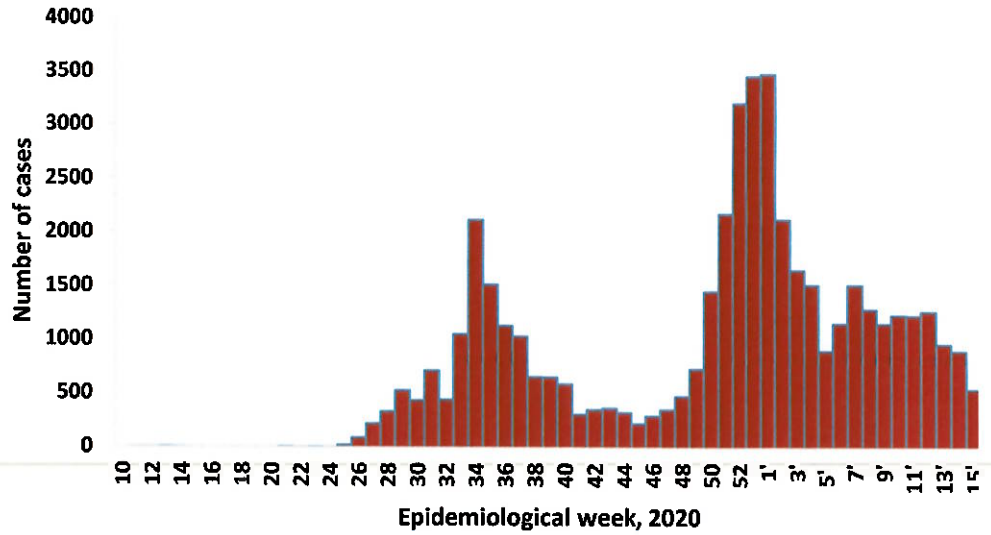


Figure 1: Epi-curve for confirmed COVID-19 cases, 15 April 2021

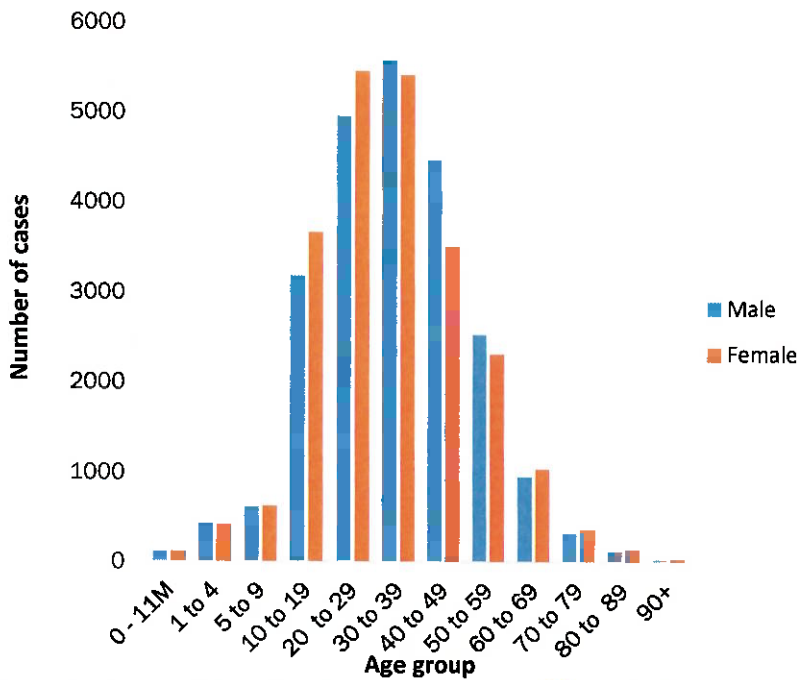
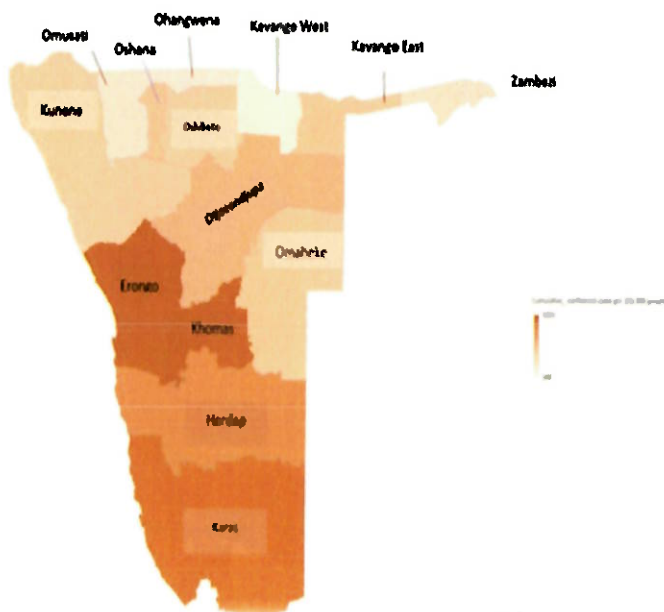


Figure 2: Age and Sex distribution of COVID-19 confirmed cases 15 April 2021

➤ Of the total confirmed cases, **29377 (63%)** are in the 20-49 years age-brackets which constitutes the majority of the recorded cases.

➤ A total of **8076 (17%)** of the confirmed cases are among the 5-19 years category.

➤ The under 5 years age group make up **1060 (2%)** of the total cases whereas, **2980 (6%)** are above 60 years of age.



Cumulative_confirmed cases per 100 000 people

Figure 3: Distribution of cumulative confirmed cases per 100 000 by region, 15 April 2021

Table 2: COVID-19 specimen recorded at the Laboratories, 15 April 2021

- To date, **365444** tests (including **11857** re-tests) have been conducted by NIP, Path-Care, NAMDEB, UNAM, Namib Poultry, Diagno, NAMPath, Namibia Central Pathology and Central Veterinary laboratories
- Since the beginning of the outbreak, **84970** contacts of confirmed cases have been identified, **241** new contacts were identified within the last 24 hours from 10 regions.
- Cumulatively, **80184** contacts have completed their monitoring period, while a total of **11702 (25%)** contacts of confirmed cases have tested positive.
- Today, **2965 (75%)** out of **3968** active contacts monitored.

VARIABLES	TOTAL
Total samples received by the Laboratory	365561
Total samples tested	353587
Total samples re-tested	11857
Total positive results	46330
Total negative results	307204
Total samples discarded	117
Invalid results	0
Total pending results	46
Indeterminant/Inconclusive	7
Suspected cases in 24 hours (excluding re-tests)	1247

Table 3: Number of people in mandatory quarantine facilities, 15 April 2021

Region	Newly quarantined 24 Hrs.	Cumulative number	Number discharged	Number in quarantine now
Erongo	0	5307	5261	46
Hardap	0	1607	1564	43
Kavango	0	1322	1307	15
Khomas	0	3411	3395	16
//Kharas	13	5686	5424	262
Kunene	95	4582	4440	142
Ohangwena	0	692	692	0
Omaheke	0	5268	4995	273
Omusati	0	565	564	1
Oshana	0	400	400	0
Oshikoto	90	11478	10738	740
Otjozondjupa	0	1476	1453	23
Zambezi	2	1692	1525	167
Total	200	43486	41758	1728

- Since March 2020, **43486** people have been placed into mandatory quarantine facilities around the country.
- A total of **1728** people are currently in quarantine, with **200** new admissions.

PUBLIC HEALTH ACTION (S)

- The government and developmental partners continue to prioritize the continuation of essential health services.

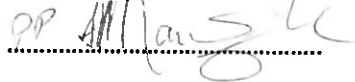
CHALLENGES

- Lack of isolation units and facilities for cases detected in boarding schools and police holding cells.
- Non-adherence to COVID-19 prevention measures by the general public.

RECOMMENDATIONS

- Establish fully equipped isolation units and facilities for cases detected in schools and police holding cells.
- Continue to give awareness on the importance of adhering to COVID -19 prevention measures; with the involvement of the Security Cluster.

APPROVED



INCIDENT MANAGER
15 APRIL 2021



SECRETARIAT

For enquiries, please contact
Namibia Public Health Emergency Operations Centre;

 PHEOC@mhss.gov.na

 0800 100 100

 0851 100 100