



NAMIBIA COVID-19 SITUATION REPORT NO. 396

Outbreak Name	COVID-19 outbreak	Country affected	Namibia
Date & Time	18.04.2021 17h00	Investigation start Date	13 March 2020
Prepared by	Surveillance Team		

HIGHLIGHTS/SITUATION UPDATE (18/04/2021)

CUMULATIVE

Tested 368702

Confirmed 46773

Active 1398

Recoveries 44760

Deaths 604

TOTAL TODAY

Tested 1122

Confirmed 118

Active 1398

Recoveries 235

Deaths 0

- A total of **46773** cases have been recorded to-date, representing **2%** of the population.
- Cases are equally distributed by gender at **50%**.
- Of the total confirmed cases, **2019 (4%)** are Health Workers.
 - 1590 (79%) State; 425 (21%) Private, 4 (0.2%) Non-Governmental Organizations.
 - 1941 (96%) recoveries and 6 (0.3%) deaths.
- The recovery rate now stands at **96%**.
- All fourteen (14) regions have reported confirmed cases; *Khomas* and *Erongo* regions reported the highest with **16775 (36%)** and **8377 (18%)** respectively.
- Of the total fatalities, **490 (81%)** are COVID-19 deaths while **114 (19%)** are COVID-19 related deaths.

Table 1: Distribution of confirmed COVID-19 cases by region, 18 April 2021

Region	Total No. of cases	Active cases	Recoveries	Cumulative Deaths	Cumulative deaths with co-morbidities	Non-COVID deaths	Vaccine data	Health Workers
Erongo	8377	228	8030	114	107	5	1093	221
Hardap	2515	171	2308	36	25	0	0	63
//Kharas	2899	48	2811	40	32	0	51	126
Kavango East	1874	52	1799	23	18	0	0	114
Kavango West	227	24	201	2	2	0	0	12
Khomas	16775	409	16148	217	194	1	3476	816
Kunene	1357	50	1293	14	14	0	0	53
Oshana	1188	59	1111	16	13	2	0	57
Omaheke	1025	7	1004	14	11	0	0	44
Omusati	1241	34	1198	9	6	0	0	34
Oshana	2879	77	2767	34	22	1	0	216
Oshikoto	2622	69	2533	18	18	2	0	118
Otjozondjupa	3072	158	2858	56	44	0	0	109
Zambezi	722	12	699	11	8	0	0	36
Total	46773	1398	44760	604	514	11	4620	2019

EPIDEMIOLOGICAL SITUATION IN NAMIBIA

Table 2: Number of people in mandatory quarantine facilities, 18 April 2021

Region	Newly quarantined 24 Hrs.	Cumulative number	Number discharged	Number in quarantine now
Erongo	0	5307	5261	46
Hardap	0	1627	1596	31
Kavango	0	1322	1311	11
Khomas	0	3415	3402	13
//Karas	36	5722	5547	175
Kunene	0	4629	4468	161
Ohangwena	0	692	692	0
Omaheke	0	5297	5164	133
Omusati	0	565	565	0
Oshana	0	400	400	0
Oshikoto	0	11478	10738	
Otjozondjupa	0	1476	1453	23
Zambezi	0	1702	1557	145
Total	36	43632	42154	1478

➤ Since March 2020, **43632** people have been placed into mandatory quarantine facilities around the country.

➤ A total of **1478** people are currently in quarantine, with **36** new admissions.

- Of the total confirmed cases, **29631 (63%)** are in the 20-49 years age-brackets which constitutes the majority of the recorded cases.
- A total of **8166 (17%)** of the confirmed cases are among the 5-19 years category.
- The under 5 years age group make up **1070 (2%)** of the total cases whereas, **3023 (6%)** are above 60 years of age.

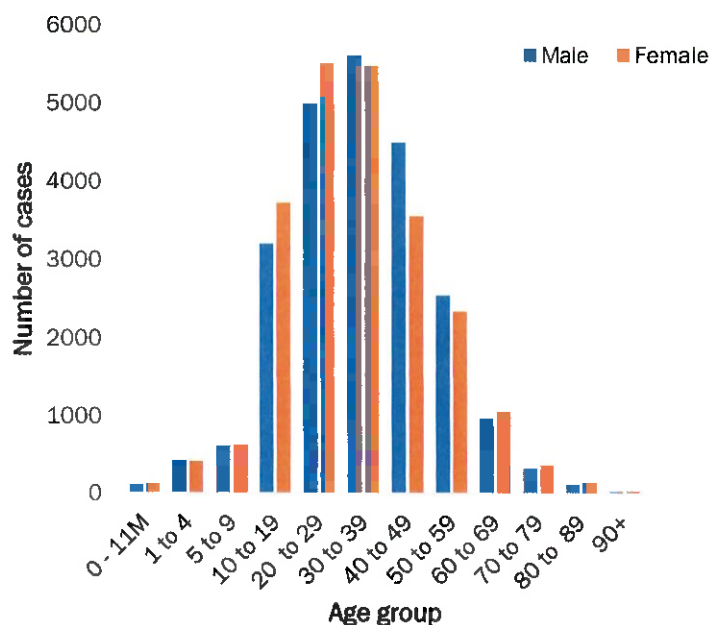


Figure 1: Age and Sex distribution of COVID-19 confirmed cases 18 April 2021

Table 3: COVID-19 specimen recorded at the Laboratories 18 April 2021

VARIABLES	TOTAL
Total samples received by the Laboratory	368819
Total samples tested	356832
Total samples re-tested	11870
Total positive results	46773
Total negative results	310006
Total samples discarded	117
Invalid results	0
Total pending results	46
Indeterminant/Inconclusive	7
Suspected cases in 24 hours (excluding re-tests)	1120

➤ To date, **368702** tests (including **11870** re-tests) have been conducted by NIP, Path-Care, NAMDEB, UNAM, Namib Poultry, Diagno, NAMPath, Namibia Central Pathology and Central Veterinary laboratories

➤ Since the beginning of the outbreak, **85558** contacts of confirmed cases have been identified, **155** new contacts were identified within the last 24 hours from 11 regions.

➤ Cumulatively, **81047** contacts have completed their monitoring period, while a total of **11703 (25%)** contacts of confirmed cases have tested positive.

➤ Today, **3384 (92%)** out of **3693** active contacts monitored.

➤ The highest peaks of **3463 (7%)** and **3485 (7%)** cases were recorded during week 53 of 2020 and 1 of 2021 respectively (Figure 2).

➤ The National Call Center continues operations for 24 hours daily.

➤ Today (18/04/2021), **472** calls were answered including **17** alerts.

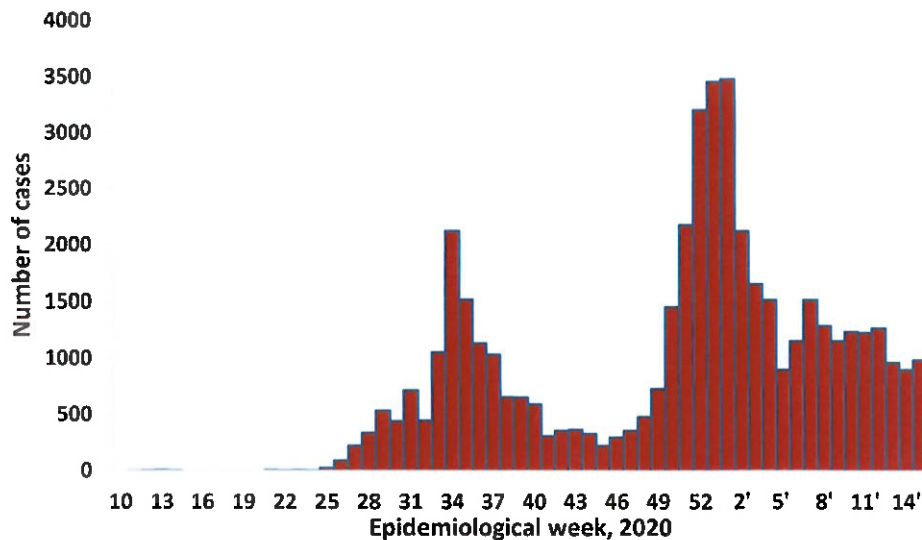
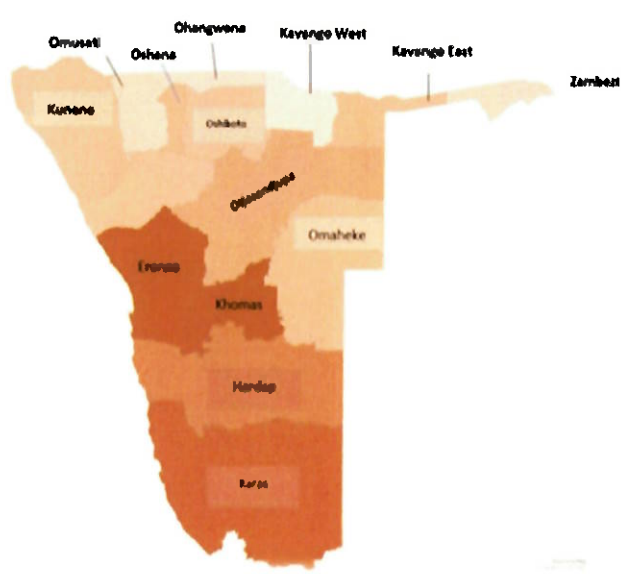


Figure 2: Epi-curve for confirmed COVID-19 cases, 18 April 2021



Cumulative_confirmed cases per 100 000 people

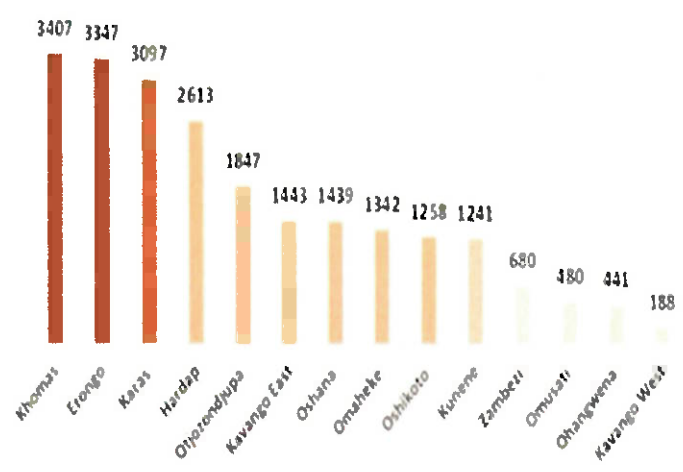


Figure 3: Distribution of cumulative confirmed cases per 100 000 by region, 18 April 2021

PUBLIC HEALTH ACTION (S)

- The COVID-19 vaccination programme has been extended to other regions and is ongoing.
- The government and developmental partners continue to prioritize the continuation of essential health services.

CHALLENGES

- Lack of isolation units and facilities for cases detected in boarding schools and police holding cells.
- Non-adherence to COVID-19 prevention measures by the general public.

RECOMMENDATIONS

- Establish fully equipped isolation units and facilities for cases detected in schools and police holding cells.
- Continue to give awareness on the importance of adhering to COVID-19 prevention measures; with the involvement of the Security Cluster.

APPROVED

INCIDENT MANAGER
18 APRIL 2021

SECRETARIAT

For enquiries, please contact
Namibia Public Health Emergency Operations Centre;
 @ PHEOC@mhss.gov.na
 ☎ 0800 100 100
 📞 0851 100 100