



## NAMIBIA COVID-19 SITUATION REPORT NO. 405

<b>Outbreak Name</b>	COVID-19 outbreak	<b>Country affected</b>	Namibia
<b>Date &amp; Time</b>	27.04.2021 17h00	<b>Investigation start Date</b>	13 March 2020
<b>Prepared by</b>	Surveillance Team		

### HIGHLIGHTS/SITUATION UPDATE (27/04/2021)

CUMULATIVE	TOTAL TODAY
Tested 381282	Tested 1961
Confirmed 48177	Confirmed 166
Active 1619	Active 1619
Recoveries 45909	Recoveries 169
Deaths 638	Deaths 4

- A total of **48177** cases have been recorded to-date, representing **2%** of the population.
- Cases are equally distributed by gender at **50%**.
- Of the total confirmed cases, **2070 (4%)** are Health Workers.
  - 1633 (79%) State; 433 (21%) Private, 4 (0.2%) Non-Governmental Organizations.
  - 2005 (97%) recoveries and 6 (0.3%) deaths.
- The recovery rate now stands at **95%**.
- All fourteen (14) regions have reported confirmed cases; *Khomas and Erongo regions reported the highest with **17116 (36%)** and **8564 (18%)** respectively.*
- Of the total fatalities, **520 (82%)** are COVID-19 deaths while **118 (18%)** are COVID-19 related deaths.

**Table 1: Distribution of confirmed COVID-19 cases by region, 27 April 2021**

Region	Total No. of cases	Active cases	Recoveries	Cumulative Deaths	Cumulative deaths with co-morbidities	Non-COVID deaths	Vaccine data	Health Workers
Erongo	8564	193	8242	124	115	5	2529	224
Hardap	2731	219	2469	43	29	0	1588	66
//Kharas	2954	54	2858	42	34	0	572	133
Kavango East	1895	43	1828	24	18	0	474	115
Kavango West	228	1	225	2	2	0	162	12
Khomas	17116	569	16321	225	201	1	7375	828
Kunene	1445	73	1357	15	15	0	630	53
Oshana	1231	54	1159	16	13	2	820	61
Omaheke	1054	24	1016	14	11	0	538	44
Omusati	1265	24	1232	9	6	0	499	34
Oshana	2943	66	2841	35	22	1	1368	225
Oshikoto	2707	56	2631	18	18	2	506	122
Otjozondjupa	3307	226	3021	60	47	0	1302	115
Zambezi	737	17	709	11	8	0	211	38
Total	48177	1619	45909	638	539	11	18574	2070



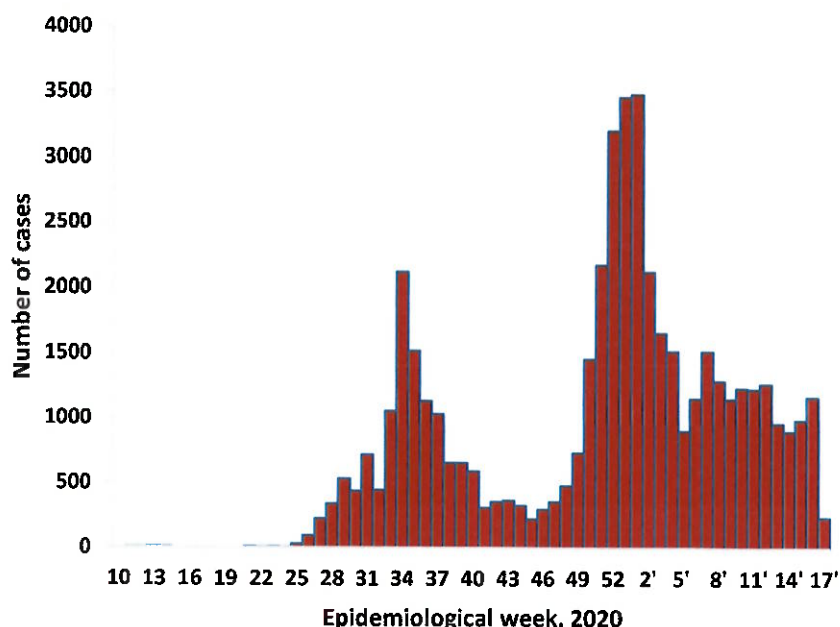
**Table 2: COVID-19 specimen recorded at the Laboratories  
27 April 2021**

VARIABLES	TOTAL
Total samples received by the Laboratory	381399
Total samples tested	369370
Total samples re-tested	11912
Total positive results	48177
Total negative results	321140
Total samples discarded	117
Invalid results	0
Total pending results	46
Indeterminant/Inconclusive	7
Suspected cases in 24 hours (excluding re-tests)	1958

- To date, **381282** tests (including **11912** re-tests) have been conducted by NIP, Path-Care, NAMDEB, UNAM, Namib Poultry, Diagno, NAMPath, Namibia Central Pathology and Central Veterinary laboratories
- Since the beginning of the outbreak, **87868** contacts of confirmed cases have been identified, **430** new contacts were identified within the last 24 hours from 12 regions.
- Cumulatively, **83053** contacts have completed their monitoring period, while a total of **12058 (25%)** contacts of confirmed cases have tested positive.
- Today, **1998 (49%)** out of **4087** active contacts monitored.

- The highest peaks of **3463 (7%)** and **3485 (7%)** cases were recorded during week 53 of 2020 and 1 of 2021 respectively (Figure 1).

- The National Call Center continues operations for 24 hours daily.
- Today (27/04/2021), **492** calls were answered including **17** alerts.



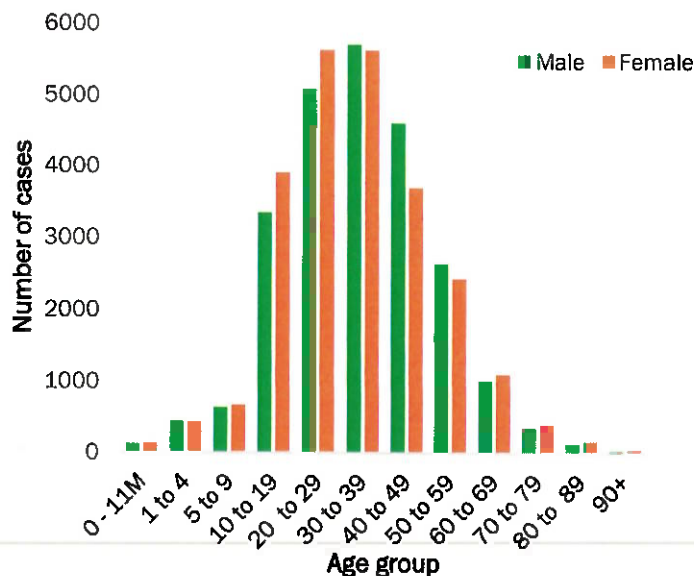
**Figure 1: Epi-curve for confirmed COVID-19 cases, 27 April 2021**

**Table 3: Number of people in mandatory quarantine facilities, 27 April 2021**

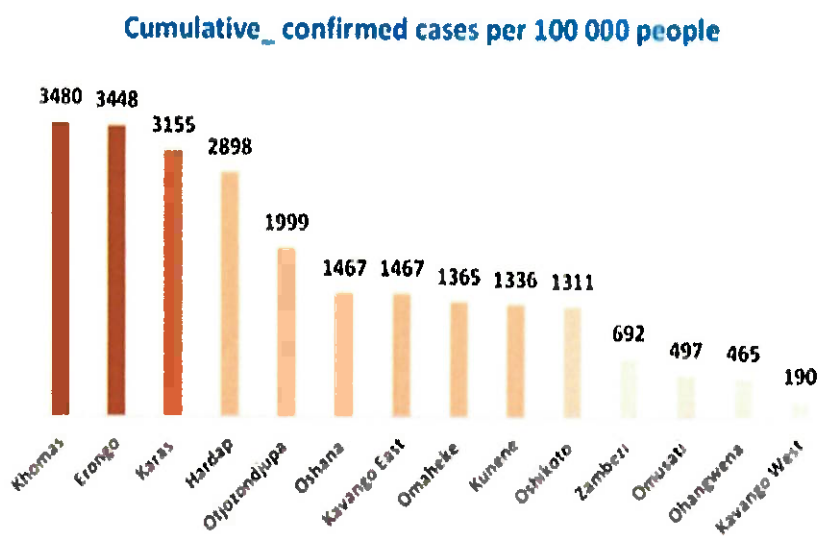
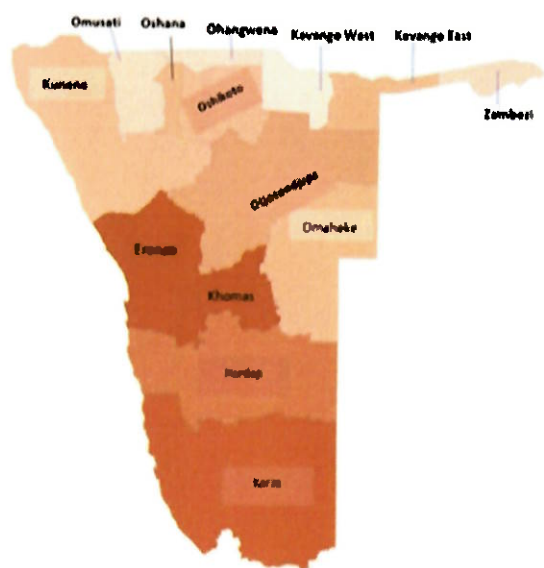
Region	Newly quarantined 24 Hrs.	Cumulative number	Number discharged	Number in quarantine now
Erongo	0	5382	5351	31
Hardap	0	1650	1627	23
Kavango	3	1332	1325	7
Khomas	0	3425	3408	17
//Kharas	1	5777	5710	67
Kunene	0	4760	4627	133
Ohangwena	0	692	692	0
Omaheke	60	5785	5616	169
Omusati	1	566	565	1
Oshana	0	400	400	0
Oshikoto	46	11853	11312	541
Otjozondjupa	0	1476	1453	23
Zambezi	26	1747	1579	168
<b>Total</b>	<b>137</b>	<b>44845</b>	<b>43665</b>	<b>1180</b>

- Since March 2020, **44845** people have been placed into mandatory quarantine facilities around the country.
- A total of **1180** people are currently in quarantine, with **137** new admissions.

- Of the total confirmed cases, **30324 (63%)** are in the 20-49 years age-brackets which constitutes the majority of the recorded cases.
- A total of **8539 (18%)** of the confirmed cases are among the 5-19 years category.
- The under 5 years age group make up **1099 (2%)** of the total cases whereas, **3162 (7%)** are above 60 years of age.



**Figure 2: Age and Sex distribution of COVID-19 confirmed cases 27 April 2021**



**Figure 3: Distribution of cumulative confirmed cases per 100 000 by region, 27 April 2021**

**PUBLIC HEALTH ACTION (S)**

- The COVID-19 vaccination programme has been extended to other regions and is ongoing.
- The government and developmental partners continue to prioritize the continuation of essential health services.

**CHALLENGES**

- Lack of isolation units and facilities for cases detected in boarding schools and police holding cells.
- Non-adherence to COVID-19 prevention measures by the general public.

**RECOMMENDATIONS**

- Establish fully equipped isolation units and facilities for cases detected in schools and police holding cells.
- Continue to give awareness on the importance of adhering to COVID-19 prevention measures; with the involvement of the Security Cluster.

APPROVED

INCIDENT MANAGER  
27 APRIL 2021

SECRETARIAT

For enquiries, please contact  
**Namibia Public Health Emergency Operations Centre;**  
[PHEOC@mhss.gov.na](mailto:PHEOC@mhss.gov.na)  
 0800 100 100  
 0851 100 100