



NAMIBIA COVID-19 SITUATION REPORT NO. 404

Outbreak Name	COVID-19 outbreak	Country affected	Namibia
Date & Time	26.04.2021 17h00	Investigation start Date	13 March 2020
Prepared by	Surveillance Team		

HIGHLIGHTS/SITUATION UPDATE (26/04/2021)

CUMULATIVE

Tested 373921

Confirmed 48011

Active 1626

Recoveries 45740

Deaths 634

TOTAL TODAY

Tested 622

Confirmed 70

Active 1626

Recoveries 98

Deaths 6

- A total of **48011** cases have been recorded to-date, representing **2%** of the population.
- Cases are equally distributed by gender at **50%**.
- Of the total confirmed cases, **2064 (4%)** are Health Workers.
 - 1627 (79%) State; 433 (21%) Private, 4 (0.2%) Non-Governmental Organizations.
 - 2005 (97%) recoveries and 6 (0.3%) deaths.
- The recovery rate now stands at **95%**.
- All fourteen (14) regions have reported confirmed cases; *Khomas* and *Erongo* regions reported the highest with **17073 (36%)** and **8563 (18%)** respectively.
- Of the total fatalities, **517 (82%)** are COVID-19 deaths while **117 (18%)** are COVID-19 related deaths.

Table 1: Distribution of confirmed COVID-19 cases by region, 26 April 2021

Region	Total No. of cases	Active cases	Recoveries	Cumulative Deaths	Cumulative deaths with co-morbidities	Non-COVID deaths	Vaccine data	Health Workers
Erongo	8563	250	8186	122	113	5	2294	224
Hardap	2730	237	2450	43	29	0	260	66
//Kharas	2942	55	2845	42	34	0	455	131
Kavango East	1895	43	1828	24	18	0	474	115
Kavango West	228	1	225	2	2	0	162	12
Khomas	17073	587	16262	223	199	1	6747	827
Kunene	1445	73	1357	15	15	0	272	53
Ohangwena	1227	50	1159	16	13	2	619	60
Omaheke	1039	9	1016	14	11	0	230	44
Omusati	1264	23	1232	9	6	0	499	34
Oshana	2932	55	2841	35	22	1	1210	225
Oshikoto	2707	56	2631	18	18	2	442	122
Otjozondjupa	3233	174	2999	60	47	0	976	115
Zambezi	733	13	709	11	8	0	143	36
Total	48011	1626	45740	634	535	11	14783	2064

Table 2: COVID-19 specimen recorded at the Laboratories
26 April 2021

VARIABLES	TOTAL
Total samples received by the Laboratory	379438
Total samples tested	367412
Total samples re-tested	11909
Total positive results	48011
Total negative results	319348
Total samples discarded	117
Invalid results	0
Total pending results	46
Indeterminant/Inconclusive	7
Suspected cases in 24 hours (excluding re-tests)	616

- To date, **373921** tests (including **11909** re-tests) have been conducted by NIP, Path-Care, NAMDEB, UNAM, Namib Poultry, Diagno, NAMPath, Namibia Central Pathology and Central Veterinary laboratories
- Since the beginning of the outbreak, **87438** contacts of confirmed cases have been identified, **307** new contacts were identified within the last 24 hours from 12 regions.
- Cumulatively, **82893** contacts have completed their monitoring period, while a total of **12024 (25%)** contacts of confirmed cases have tested positive.
- Today, **2474 (65%)** out of **3817** active contacts monitored.

- The highest peaks of **3463 (7%)** and **3485 (7%)** cases were recorded during week 53 of 2020 and 1 of 2021 respectively (Figure 1).

- The National Call Center continues operations for 24 hours daily.
- Today (26/04/2021), **477** calls were answered including **20** alerts.

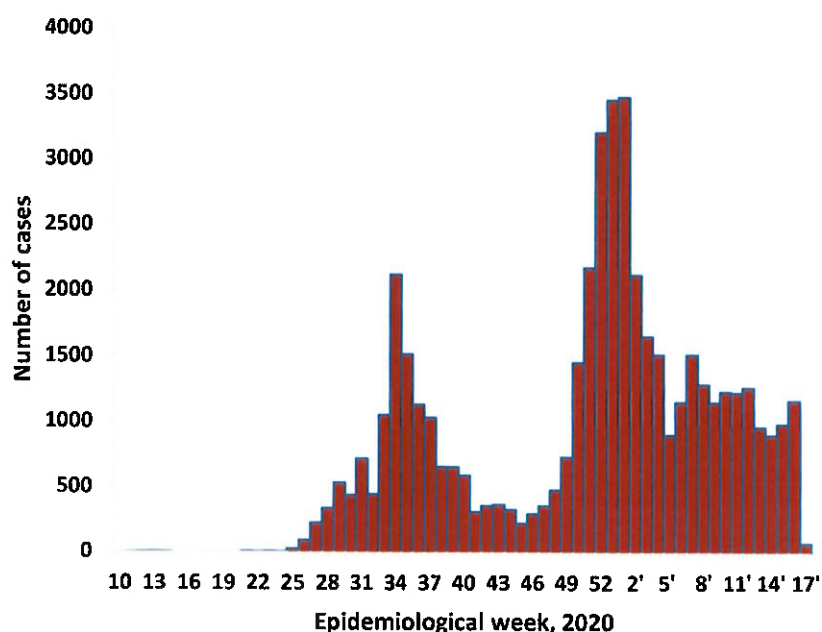


Figure 1: Epi-curve for confirmed COVID-19 cases, 26 April 2021

Table 3: Number of people in mandatory quarantine facilities, 26 April 2021

Region	Newly quarantined 24 Hrs.	Cumulative number	Number discharged	Number in quarantine now
Erongo	3	5382	5350	32
Hardap	0	1650	1627	23
Kavango	0	1329	1320	9
Khomas	3	3425	3408	17
//Kharas	40	5776	5665	111
Kunene	50	4760	4627	133
Ohangwena	0	692	692	0
Omaheke	0	5725	5510	215
Omusati	0	565	565	0
Oshana	0	400	400	0
Oshikoto	39	11807	11167	640
Otjozondjupa	0	1476	1453	23
Zambezi	17	1721	1579	142
Total	152	44708	43363	1345

- Since March 2020, **44708** people have been placed into mandatory quarantine facilities around the country.
- A total of **1345** people are currently in quarantine, with **152** new admissions.

- Of the total confirmed cases, **30251 (63%)** are in the 20-49 years age-brackets which constitutes the majority of the recorded cases.
- A total of **8471 (18%)** of the confirmed cases are among the 5-19 years category.
- The under 5 years age group make up **1098 (2%)** of the total cases whereas, **3152 (7%)** are above 60 years of age.

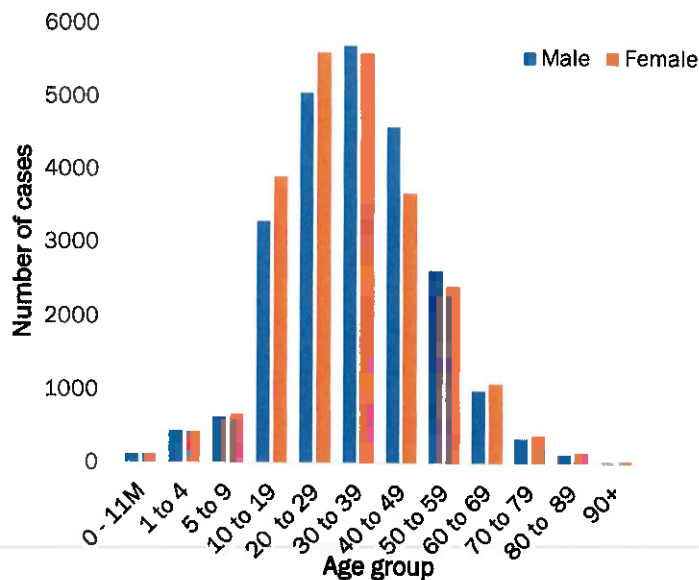


Figure 2: Age and Sex distribution of COVID-19 confirmed cases 26 April 2021

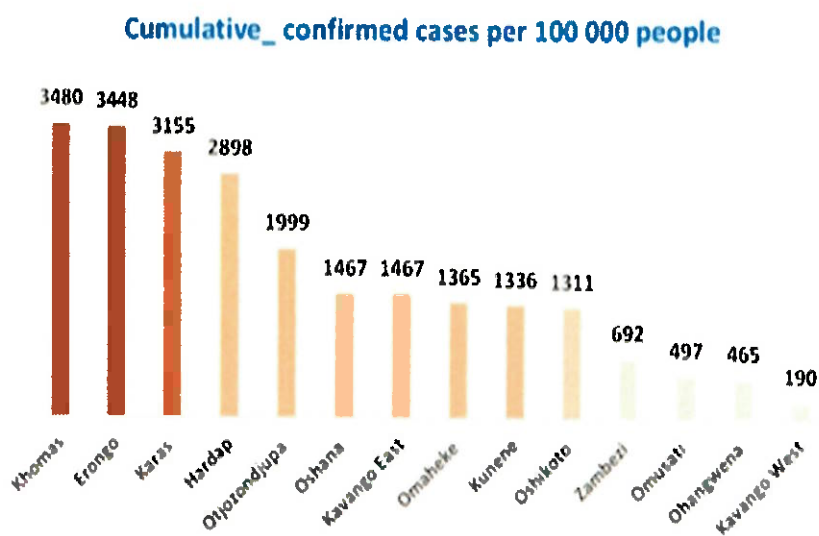
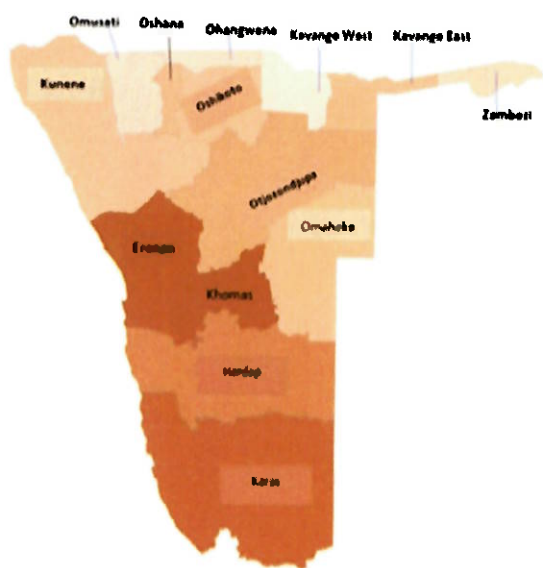


Figure 3: Distribution of cumulative confirmed cases per 100 000 by region, 26 April 2021

PUBLIC HEALTH ACTION (S)

- The COVID-19 vaccination programme has been extended to other regions and is ongoing.
- The government and developmental partners continue to prioritize the continuation of essential health services.

CHALLENGES

- Lack of isolation units and facilities for cases detected in boarding schools and police holding cells.
- Non-adherence to COVID-19 prevention measures by the general public.

RECOMMENDATIONS

- Establish fully equipped isolation units and facilities for cases detected in schools and police holding cells.
- Continue to give awareness on the importance of adhering to COVID-19 prevention measures; with the involvement of the Security Cluster.

APPROVED

INCIDENT MANAGER
26 APRIL 2021

SECRETARIAT

For enquiries, please contact
Namibia Public Health Emergency Operations Centre;
PHEOC@mhss.gov.na
 0800 100 100
 0851 100 100