



NAMIBIA COVID-19 SITUATION REPORT NO. 406

Outbreak Name	COVID-19 outbreak	Country affected	Namibia
Date & Time	28.04.2021 17h00	Investigation start Date	13 March 2020
Prepared by	Surveillance Team		

HIGHLIGHTS/SITUATION UPDATE (28/04/2021)

CUMULATIVE

Tested 383087

Confirmed 48351

Active 1677

Recoveries 46021

Deaths 642

TOTAL TODAY

Tested 1805

Confirmed 174

Active 1677

Recoveries 112

Deaths 4

- A total of **48351** cases have been recorded to-date, representing **2%** of the population.
- Cases are equally distributed by gender at **50%**.
- Of the total confirmed cases, **2074 (4%)** are Health Workers.
 - 1637 (79%) State; 433 (21%) Private, 4 (0.2%) Non-Governmental Organizations.
 - 2005 (97%) recoveries and 6 (0.3%) deaths.
- The recovery rate now stands at **95%**.
- All fourteen (14) regions have reported confirmed cases; *Khomas* and *Erongo* regions reported the highest with **17147 (35%)** and **8581 (18%)** respectively.
- Of the total fatalities, **524 (81%)** are COVID-19 deaths while **119 (19%)** are COVID-19 related deaths.

Table 1: Distribution of confirmed COVID-19 cases by region, 28 April 2021

Region	Total No. of cases	Active cases	Recoveries	Cumulative Deaths	Cumulative deaths with co-morbidities	Non-COVID deaths	Vaccine data	Health Workers
Erongo	8581	210	8242	124	115	5	2688	225
Hardap	2763	217	2503	43	29	0	1069	67
//Kharas	2961	60	2858	43	34	0	694	133
Kavango East	1897	21	1852	24	18	0	474	115
Kavango West	228	1	225	2	2	0	254	12
Khomas	17147	557	16363	226	2012	1	8042	830
Kunene	1484	112	1357	15	15	0	862	53
Ohangwena	1231	49	1164	16	13	2	1056	61
Omaheke	1072	42	1016	14	11	0	938	44
Omusati	1267	24	1233	10	7	0	499	34
Oshana	2952	75	2841	35	22	1	1368	225
Oshikoto	2707	56	2631	18	18	2	558	122
Otjozondjupa	3323	241	3021	61	47	0	1600	115
Zambezi	738	12	715	11	8	0	221	38
Total	48351	1677	46021	642	2351	11	20323	2074

Table 2: COVID-19 specimen recorded at the Laboratories
28 April 2021

VARIABLES	TOTAL
Total samples received by the Laboratory	383204
Total samples tested	371173
Total samples re-tested	11914
Total positive results	48351
Total negative results	322769
Total samples discarded	117
Invalid results	0
Total pending results	46
Indeterminant/Inconclusive	7
Suspected cases in 24 hours (excluding re-tests)	1803

- To date, **383087** tests (including **11914** re-tests) have been conducted by NIP, Path-Care, NAMDEB, UNAM, Namib Poultry, Diagno, NAMPath, Namibia Central Pathology and Central Veterinary laboratories
- Since the beginning of the outbreak, **88109** contacts of confirmed cases have been identified, **241** new contacts were identified within the last 24 hours from 13 regions.
- Cumulatively, **83250** contacts have completed their monitoring period, while a total of **12069 (25%)** contacts of confirmed cases have tested positive.
- Today, **2610 (64%)** out of **4086** active contacts monitored.

- The highest peaks of **3463 (7%)** and **3485 (7%)** cases were recorded during week 53 of 2020 and 1 of 2021 respectively (Figure 1).

- The National Call Center continues operations for 24 hours daily.
- Today (28/04/2021), **623** calls were answered including **29** alerts.

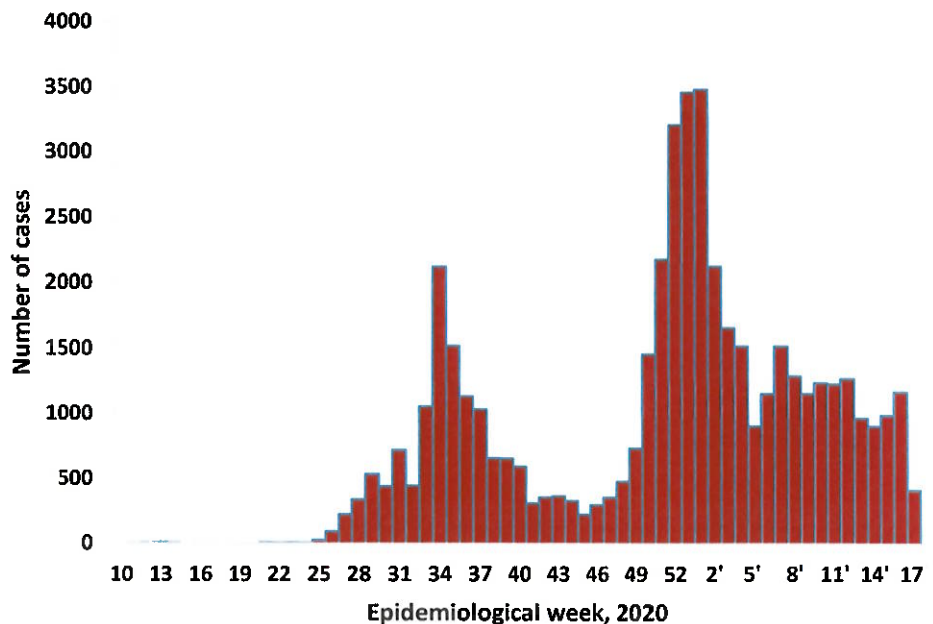


Figure 1: Epi-curve for confirmed COVID-19 cases, 28 April 2021

Table 3: Number of people in mandatory quarantine facilities, 28 April 2021

Region	Newly quarantined 24 Hrs.	Cumulative number	Number discharged	Number in quarantine now
Erongo	0	5382	5351	31
Hardap	0	1650	1627	23
Kavango	3	1335	1325	10
Khomas	9	3434	3411	23
//Kharas	0	5777	5710	67
Kunene	0	4760	4628	132
Ohangwena	0	692	692	0
Omaheke	76	5861	5616	245
Omusati	0	566	565	1
Oshana	0	400	400	0
Oshikoto	106	11959	11320	639
Otjozondjupa	0	1476	1453	23
Zambezi	44	1791	1598	193
Total	238	45083	43696	1387

- Since March 2020, **45083** people have been placed into mandatory quarantine facilities around the country.
- A total of **1387** people are currently in quarantine, with **238** new admissions.

- Of the total confirmed cases, **30416 (63%)** are in the 20-49 years age-brackets which constitutes the majority of the recorded cases.
- A total of **8584 (18%)** of the confirmed cases are among the 5-19 years category.
- The under 5 years age group make up **1102 (2%)** of the total cases whereas, **3171 (7%)** are above 60 years of age.

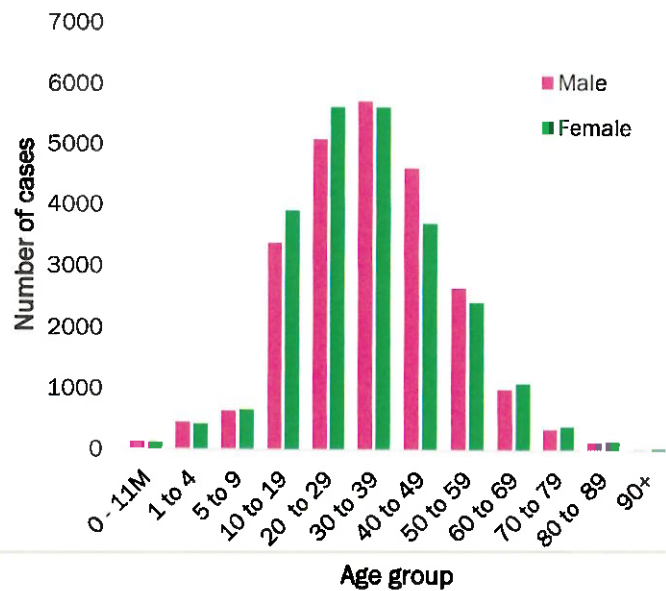


Figure 2: Age and Sex distribution of COVID-19 confirmed cases 28 April 2021

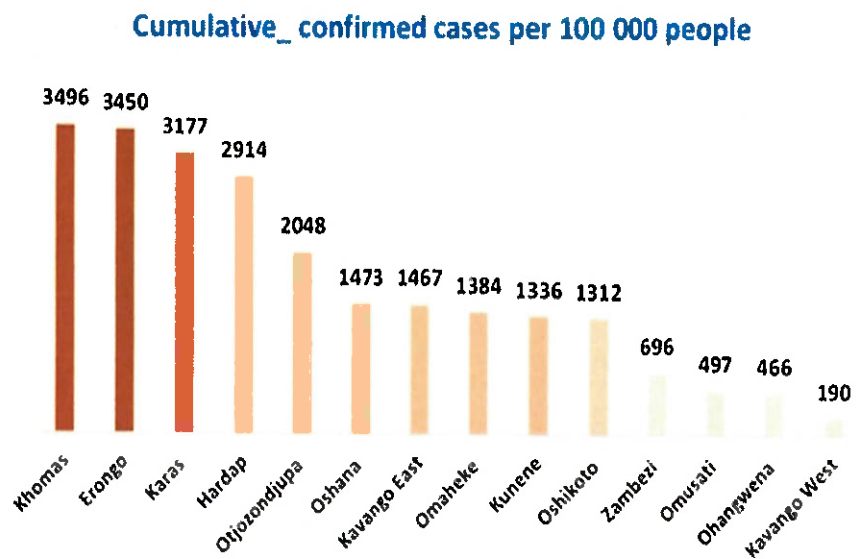
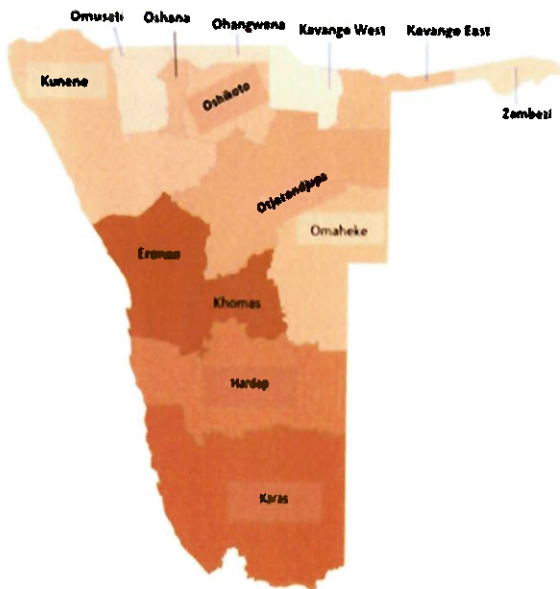


Figure 3: Distribution of cumulative confirmed cases per 100 000 by region, 28 April 2021

PUBLIC HEALTH ACTION (S)

- The COVID-19 vaccination programme has been extended to other regions and is ongoing.
- The government and developmental partners continue to prioritize the continuation of essential health services.

CHALLENGES

- Lack of isolation units and facilities for cases detected in boarding schools and police holding cells.
- Non-adherence to COVID-19 prevention measures by the general public.

RECOMMENDATIONS

- Establish fully equipped isolation units and facilities for cases detected in schools and police holding cells.
- Continue to give awareness on the importance of adhering to COVID -19 prevention measures; with the involvement of the Security Cluster.

APPROVED

INCIDENT MANAGER
28 APRIL 2021

SECRETARIAT

For enquiries, please contact
Namibia Public Health Emergency Operations Centre;
PHEOC@mhss.gov.na
 0800 100 100
 0851 100 100