



## NAMIBIA COVID-19 SITUATION REPORT NO. 407

Outbreak Name	COVID-19 outbreak	Country affected	Namibia
Date & Time	29.04.2021 17h00	Investigation start Date	13 March 2020
Prepared by	Surveillance Team		

### HIGHLIGHTS/SITUATION UPDATE (29/04/2021)

#### CUMULATIVE

Tested 385091

Confirmed 48654

Active 1762

Recoveries 46238

Deaths 643

#### TOTAL TODAY

Tested 2004

Confirmed 303

Active 1762

Recoveries 217

Deaths 1

- A total of **48654** cases have been recorded to-date, representing **2%** of the population.
- Cases are equally distributed by gender at **50%**.
- Of the total confirmed cases, **2084 (4%)** are Health Workers.
  - 1643 (79%) State; 437 (21%) Private, 4 (0.2%) Non-Governmental Organizations.
  - 2005 (96%) recoveries and 6 (0.3%) deaths.
- The recovery rate now stands at **95%**.
- All fourteen (14) regions have reported confirmed cases; *Khomas* and *Erongo* regions reported the highest with **17260 (35%)** and **8636 (18%)** respectively.
- Of the total fatalities, **525 (82%)** are COVID-19 deaths while **119 (18%)** are COVID-19 related deaths.

**Table 1: Distribution of confirmed COVID-19 cases by region, 29 April 2021**

Region	Total No. of cases	Active cases	Recoveries	Cumulative Deaths	Cumulative deaths with co-morbidities	Non-COVID deaths	Vaccine data	Health Workers
Erongo	8636	251	8256	124	115	5	2938	227
Hardap	2785	207	2535	43	29	0	1245	67
//Karas	2965	52	2870	43	34	0	860	133
Kavango East	1903	23	1856	24	18	0	1142	115
Kavango West	228	1	225	2	2	0	280	12
Khomas	17260	669	16363	227	2013	1	8657	836
Kunene	1498	72	1411	15	15	0	951	53
Ohangwena	1239	57	1164	16	13	2	1056	61
Omaheke	1076	22	1040	14	11	0	1329	44
Omusati	1275	30	1235	10	7	0	499	34
Oshana	2970	93	2841	35	22	1	1658	226
Oshikoto	2720	69	2631	18	18	2	641	122
Otjozondjupa	3360	204	3095	61	47	0	1907	116
Zambezi	739	12	716	11	8	0	262	38
<b>Total</b>	<b>48654</b>	<b>1762</b>	<b>46238</b>	<b>643</b>	<b>2352</b>	<b>11</b>	<b>23425</b>	<b>2084</b>

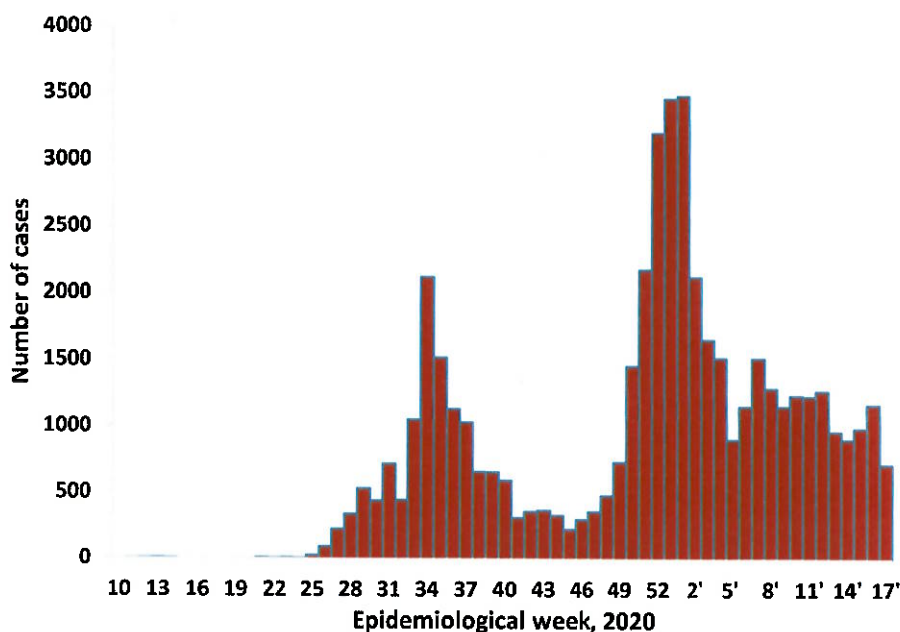
**Table 2: COVID-19 specimen recorded at the Laboratories  
29 April 2021**

VARIABLES	TOTAL
Total samples received by the Laboratory	385208
Total samples tested	373167
Total samples re-tested	11924
Total positive results	48654
Total negative results	324460
Total samples discarded	117
Invalid results	0
Total pending results	46
Indeterminant/Inconclusive	7
Suspected cases in 24 hours (excluding re-tests)	1994

- To date, **385091** tests (including **11924** re-tests) have been conducted by NIP, Path-Care, NAMDEB, UNAM, Namib Poultry, Diagno, NAMPath, Namibia Central Pathology, Highcare and Central Veterinary laboratories
- Since the beginning of the outbreak, **88272** contacts of confirmed cases have been identified, **163** new contacts were identified within the last 24 hours from 11 regions.
- Cumulatively, **83645** contacts have completed their monitoring period, while a total of **12153 (25%)** contacts of confirmed cases have tested positive.
- Today, **2503 (65%)** out of **3854** active contacts monitored.

- The highest peaks of **3463 (7%)** and **3485 (7%)** cases were recorded during week 53 of 2020 and 1 of 2021 respectively (Figure 1).

- The National Call Center continues operations for 24 hours daily.
- Today (29/04/2021), **519** calls were answered including **23** alerts.



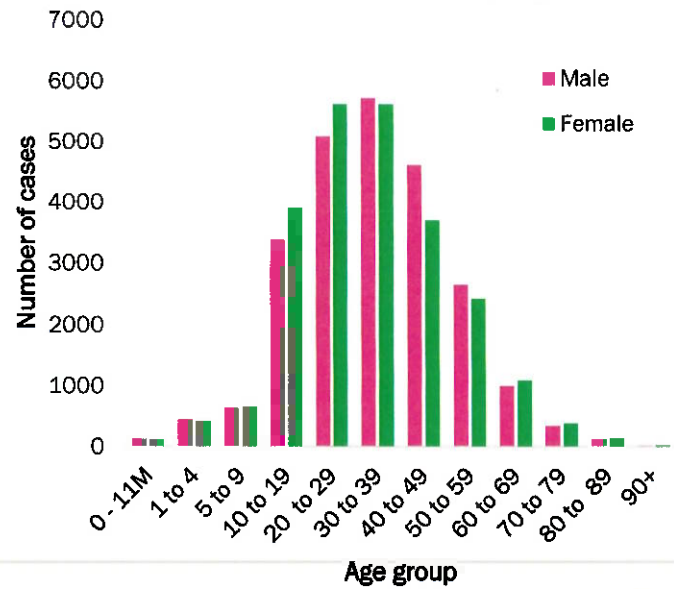
**Figure 1: Epi-curve for confirmed COVID-19 cases, 29 April 2021**

**Table 3: Number of people in mandatory quarantine facilities, 29 April 2021**

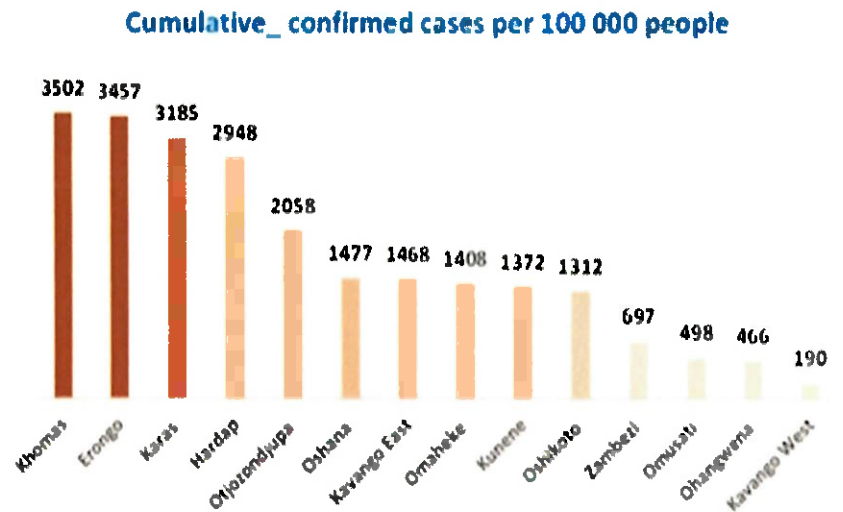
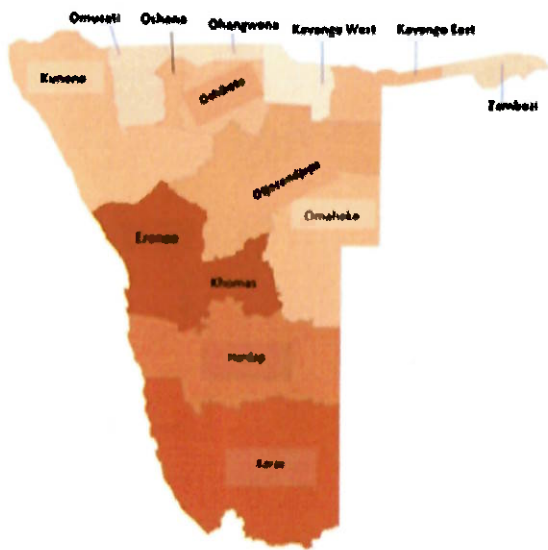
Region	Newly quarantined 24 Hrs.	Cumulative number	Number discharged	Number in quarantine now
Erongo	0	5382	5351	31
Hardap	0	1650	1627	23
Kavango	0	1335	1327	8
Khomas	1	3435	3420	15
//Kharas	30	5807	5732	75
Kunene	0	4760	4628	132
Ohangwena	0	692	692	0
Omaheke	0	5861	5616	245
Omusati	0	566	565	1
Oshana	0	400	400	0
Oshikoto	36	11995	11331	664
Otjozondjupa	0	1476	1453	23
Zambezi	0	1791	1598	193
<b>Total</b>	<b>67</b>	<b>45150</b>	<b>43740</b>	<b>1410</b>

- Since March 2020, **45150** people have been placed into mandatory quarantine facilities around the country.
- A total of **1410** people are currently in quarantine, with **67** new admissions.

- Of the total confirmed cases, **30592 (63%)** are in the 20-49 years age-brackets which constitutes the majority of the recorded cases.
- A total of **8634 (18%)** of the confirmed cases are among the 5-19 years category.
- The under 5 years age group make up **1107 (2%)** of the total cases whereas, **3199 (7%)** are above 60 years of age.



**Figure 2: Age and Sex distribution of COVID-19 confirmed cases 29 April 2021**



**Figure 3: Distribution of cumulative confirmed cases per 100 000 by region, 29 April 2021**

**PUBLIC HEALTH ACTION (S)**

- The COVID-19 vaccination programme has been extended to other regions and is ongoing.
- The government and developmental partners continue to prioritize the continuation of essential health services.

**CHALLENGES**

- Lack of isolation units and facilities for cases detected in boarding schools and police holding cells.
- Non-adherence to COVID-19 prevention measures by the general public.

**RECOMMENDATIONS**

- Establish fully equipped isolation units and facilities for cases detected in schools and police holding cells.
- Continue to give awareness on the importance of adhering to COVID-19 prevention measures; with the involvement of the Security Cluster.

APPROVED

INCIDENT MANAGER  
29 APRIL 2021

SECRETARIAT

For enquiries, please contact  
**Namibia Public Health Emergency Operations Centre;**  
[PHEOC@mhss.gov.na](mailto:PHEOC@mhss.gov.na)  
 0800 100 100  
 0851 100 100