



NAMIBIA COVID-19 SITUATION REPORT NO. 411

Outbreak Name	COVID-19 outbreak	Country affected	Namibia
Date & Time	03.05.2021 17h00	Investigation start Date	13 March 2020
Prepared by	Surveillance Team		

HIGHLIGHTS/SITUATION UPDATE (03/05/2021)

CUMULATIVE	TOTAL TODAY
Tested 390001	Tested 639
Confirmed 49203	Confirmed 52
Active 1876	Active 1876
Recoveries 46653	Recoveries 147
Deaths 663	Deaths 4

- A total of **49203** cases have been recorded to-date, representing **2%** of the population.
- Cases are equally distributed by gender at **50%**.
- Of the total confirmed cases, **2116 (4%)** are Health Workers.
 - 1665 (79%) State; 447 (21%) Private, 4 (0.2%) Non-Governmental Organizations.
 - 2064 (98%) recoveries and 6 (0.3%) deaths.
- The recovery rate now stands at **95%**.
- All fourteen (14) regions have reported confirmed cases; **Khomas and Erongo** regions reported the highest with **17407 (35%)** and **8681 (18%)** respectively.
- Of the total fatalities, **542 (82%)** are COVID-19 deaths while **121 (18%)** are COVID-19 related deaths.

Table 1: Distribution of confirmed COVID-19 cases by region, 03 May 2021

Region	Total No. of cases	Active cases	Recoveries	Cumulative Deaths	Cumulative deaths with co-morbidities	Non-COVID deaths	Vaccine data	Health Workers
Erongo	8681	222	8327	127	118	5	3450	228
Hardap	2858	211	2601	46	31	0	1534	68
//Kharas	2998	62	2893	43	34	0	1043	136
Kavango East	1926	46	1856	24	18	0	1392	116
Kavango West	229	2	225	2	2	0	380	12
Khomas	17407	656	16514	236	211	1	11038	847
Kunene	1509	64	1430	15	15	0	1127	54
Ohangwena	1254	72	1164	16	13	2	1056	62
Omaheke	1097	23	1059	15	11	0	1329	44
Omusati	1302	32	1259	11	8	0	499	34
Oshana	3005	128	2841	35	22	1	1658	228
Oshikoto	2746	94	2631	19	18	2	666	123
Otjozondjupa	3441	247	3132	62	48	0	2076	124
Zambezi	750	17	721	12	9	0	315	40
Total	49203	1876	46653	663	558	11	27563	2116

EPIDEMIOLOGICAL SITUATION IN NAMIBIA

Table 2: COVID-19 specimen recorded at the Laboratories
03 May 2021

VARIABLES	TOTAL
Total samples received by the Laboratory	390118
Total samples tested	378059
Total samples re-tested	11942
Total positive results	49203
Total negative results	328803
Total samples discarded	117
Invalid results	0
Total pending results	46
Indeterminant/Inconclusive	7
Suspected cases in 24 hours (excluding re-tests)	633

- To date, **390001** tests (including **11942** re-tests) have been conducted by NIP, Path-Care, NAMDEB, UNAM, Namib Poultry, Diagno, NAMPath, Namibia Central Pathology, Highcare and Central Veterinary laboratories
- Since the beginning of the outbreak, **89229** contacts of confirmed cases have been identified, **91** new contacts were identified within the last 24 hours from 11 regions.
- Cumulatively, **84621** contacts have completed their monitoring period, while a total of **12475 (25%)** contacts of confirmed cases have tested positive.
- Today, **346 (9%)** out of **3827** active contacts monitored.

- The highest peaks of **3463 (7%)** and **3485 (7%)** cases were recorded during week 53 of 2020 and 1 of 2021 respectively (Figure 1).

- The National Call Center continues operations for 24 hours daily.
- Today (03/05/2021), **519** calls were answered including **25** alerts.

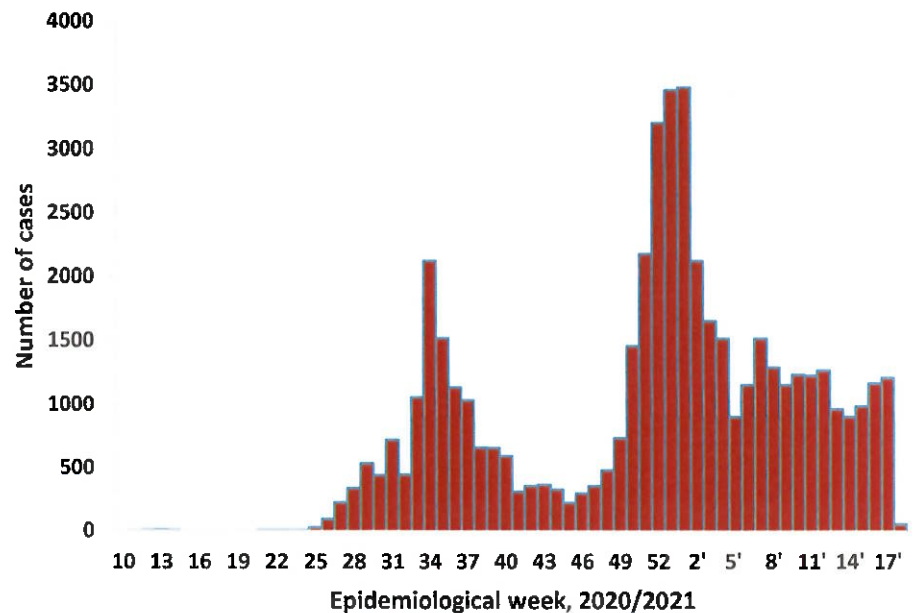


Figure 1: Epi-curve for confirmed COVID-19 cases, 03 May 2021

Table 3: Number of people in mandatory quarantine facilities, 03 May 2021

Region	Newly quarantined 24 Hrs.	Cumulative number	Number discharged	Number in quarantine now
Erongo	0	5382	5382	0
Hardap	0	1730	1659	71
Kavango	0	1337	1330	7
Khomas	0	3435	3425	10
//Kharas	0	5814	5770	44
Kunene	0	4760	4628	132
Ohangwena	0	692	692	0
Omaheke	34	6102	5936	166
Omusati	0	566	566	0
Oshana	0	400	400	0
Oshikoto	0	12028	11346	682
Otjozondjupa	0	1476	1453	23
Zambezi	0	1791	1624	167
Total	34	45513	44211	1302

- Since March 2020, **45513** people have been placed into mandatory quarantine facilities around the country.
- A total of **1302** people are currently in quarantine, with **34** new admissions.

- Of the total confirmed cases, **30916 (63%)** are in the 20-49 years age-brackets which constitutes the majority of the recorded cases.
- A total of **8717 (18%)** of the confirmed cases are among the 5-19 years category.
- The under 5 years age group make up **1115 (2%)** of the total cases whereas, **3265 (7%)** are above 60 years of age.

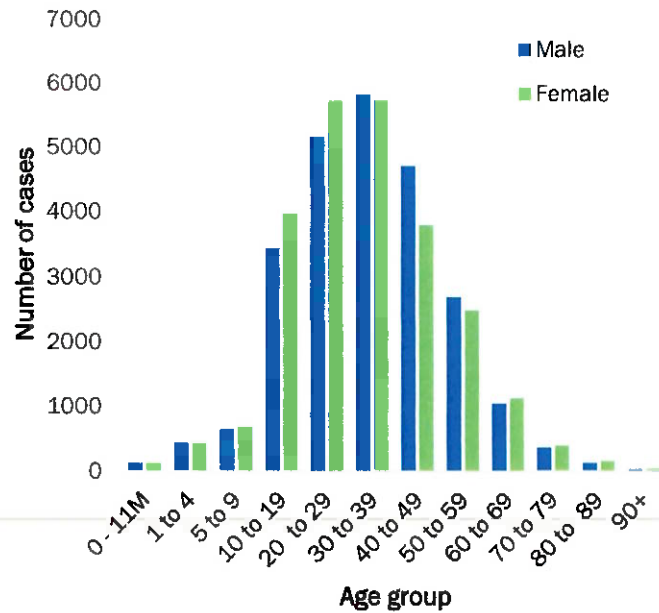
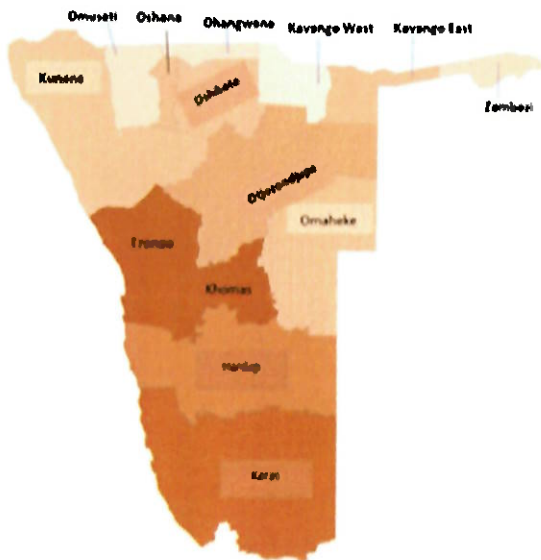


Figure 2: Age and Sex distribution of COVID-19 confirmed cases 03 May 2021



Cumulative_confirmed cases per 100 000 people

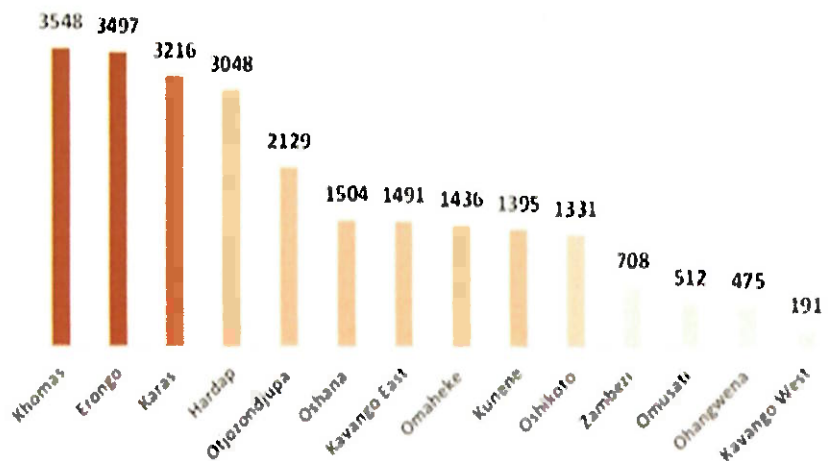


Figure 3: Distribution of cumulative confirmed cases per 100 000 by region, 03 May 2021

PUBLIC HEALTH ACTION (S)

- The COVID-19 vaccination programme has been extended to other regions and is ongoing.
- The government and developmental partners continue to prioritize the continuation of essential health services.

CHALLENGES

- Lack of isolation units and facilities for cases detected in boarding schools and police holding cells.

RECOMMENDATIONS

- Establish fully equipped isolation units and facilities for cases detected in schools and police holding cells.

APPROVED

INCIDENT MANAGER
03 MAY 2021

SECRETARIAT

For enquiries, please contact
Namibia Public Health Emergency Operations Centre;
PHEOC@mhss.gov.na
 0800 100 100
 0851 100 100