



NAMIBIA COVID-19 SITUATION REPORT NO. 419

Outbreak Name	COVID-19 outbreak	Country affected	Namibia
Date & Time	11.05.2021 17h00	Investigation start Date	13 March 2020
Prepared by	Surveillance Team		

HIGHLIGHTS/SITUATION UPDATE (11/05/2021)

- A total of **50515** cases have been recorded to-date, representing **2%** of the population.
- Cases are equally distributed by gender at **50%**.
- Of the total confirmed cases, **2178 (4%)** are Health Workers.
 - 1713 (79%) State; 461 (21%) Private, 4 (0.2%) Non-Governmental Organizations.
 - 2064 (95%) recoveries and 6 (0.3%) deaths.
- The recovery rate now stands at **94%**.
- All fourteen (14) regions have reported confirmed cases; *Khomas* and *Erongo* regions reported the highest with **17999 (35%)** and **8818 (18%)** respectively.
- Of the total fatalities, **576 (82%)** are COVID-19 deaths while **126 (18%)** are COVID-19 related deaths.



Table 1: Distribution of confirmed COVID-19 cases by region, 11 May 2021

Region	Total No. of cases	Active cases	Recoveries	Cumulative Deaths	Cumulative deaths with co-morbidities	Non-COVID deaths	Vaccine data	Health Workers
Erongo	8818	152	8526	135	124	5	4733	228
Hardap	2967	134	2786	47	32	0	2047	72
//Kharas	3125	132	2947	46	37	0	1614	138
Kavango East	1952	25	1903	24	18	0	3596	119
Kavango West	230	0	228	2	2	0	1098	12
Khomas	17999	1048	16698	252	224	1	14328	886
Kunene	1533	26	1491	16	16	0	2203	56
Ohangwena	1280	97	1164	17	13	2	2529	63
Omaheke	1136	38	1082	16	12	0	2906	44
Omusati	1322	52	1259	11	8	0	2135	34
Oshana	3047	106	2904	36	23	1	2164	232
Oshikoto	2780	33	2725	20	18	2	992	123
Otjozondjupa	3549	236	3246	67	52	0	3558	131
Zambezi	777	25	739	13	9	0	676	40
Total	50515	2104	47698	702	588	11	44579	2178

EPIDEMIOLOGICAL SITUATION IN NAMIBIA

- Of the total confirmed cases, **31679 (63%)** are in the 20-49 years age-brackets which constitutes the majority of the recorded cases.
- A total of **8886 (18%)** of the confirmed cases are among the 5-19 years category.
- The under 5 years age group make up **1150 (2%)** of the total cases whereas, **3417 (7%)** are above 60 years of age.

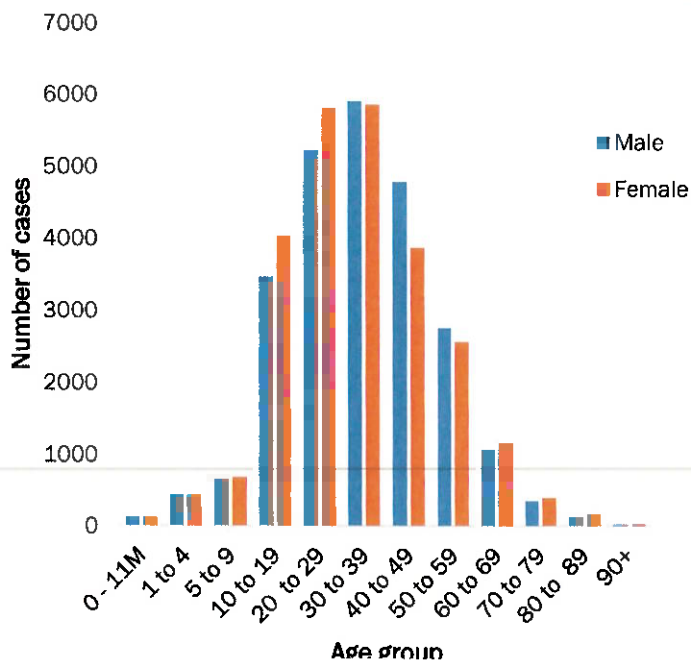


Figure 1: Age and Sex distribution of COVID-19 confirmed cases 11 May 2021

Table 2: COVID-19 specimen recorded at the Laboratories 11 May 2021

VARIABLES	TOTAL
Total samples received by the Laboratory	401180
Total samples tested	389066
Total samples re-tested	11997
Total positive results	50515
Total negative results	338498
Total samples discarded	117
Invalid results	0
Total pending results	46
Indeterminant/Inconclusive	7
Suspected cases in 24 hours (excluding re-tests)	1874

- To date, **401063** tests (including **11997** re-tests) have been conducted by NIP, Path-Care, NAMDEB, UNAM, Namib Poultry, Diagno, NAMPath, Namibia Central Pathology, High Care and Central Veterinary laboratories
- Since the beginning of the outbreak, **91127** contacts of confirmed cases have been identified, **479** new contacts were identified within the last 24 hours from 13 regions.
- Cumulatively, **87300** contacts have completed their monitoring period, while a total of **12742 (25%)** contacts of confirmed cases have tested positive.
- Today, **1054 (34%)** out of **3101** active contacts monitored.

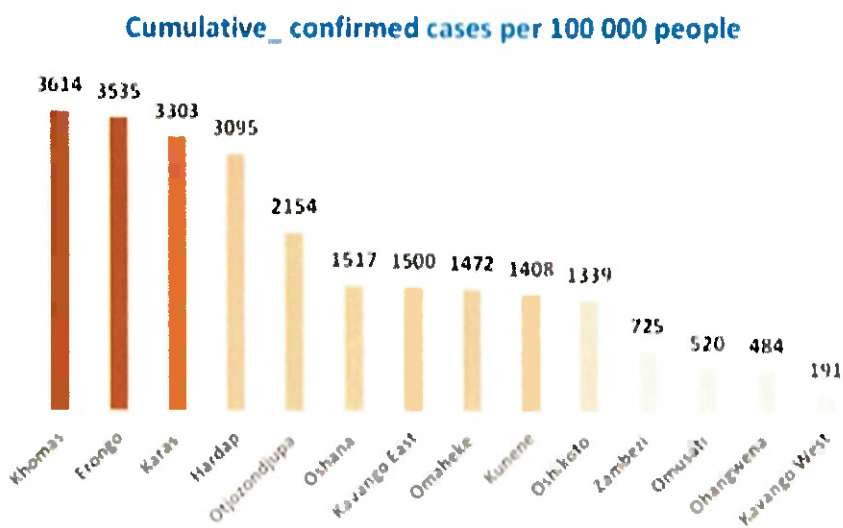
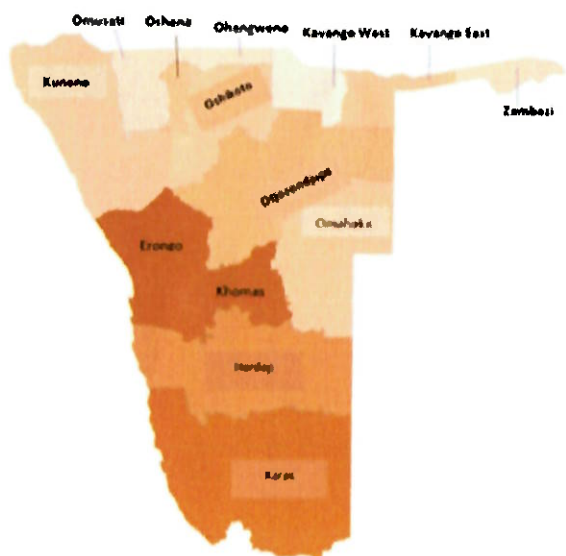


Figure 2: Distribution of cumulative confirmed cases per 100 000 by region, 11 May 2021

➤ The highest peaks of **3463 (7%)** and **3485 (7%)** cases were recorded during week 53 of 2020 and 1 of 2021 respectively (Figure 3).

➤ The National Call Center continues operations for 24 hours daily.

➤ Today (11/05/2021), **547** calls were answered including **25** alerts.

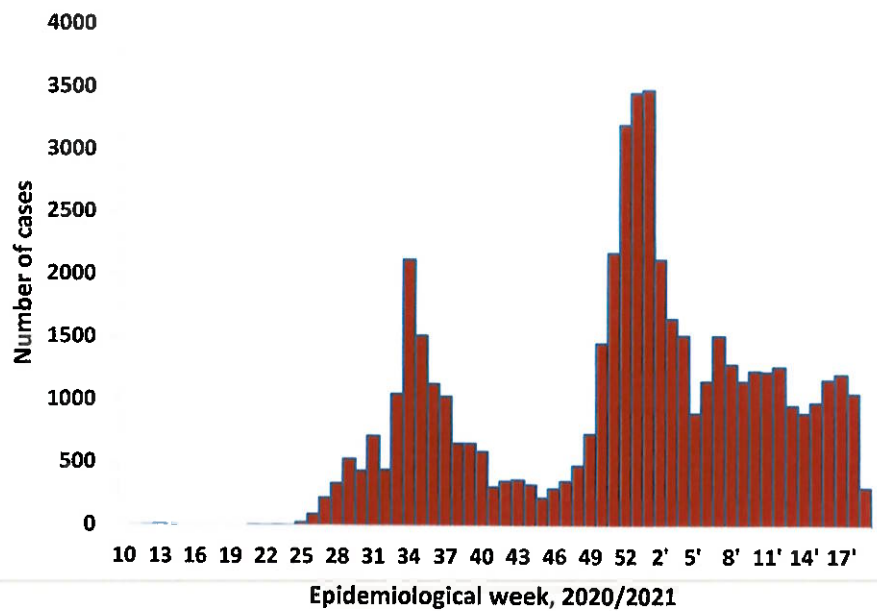


Figure 3: Epi-curve for confirmed COVID-19 cases, 11 May 2021

Table 3: Number of people in mandatory quarantine facilities, 11 May 2021

Region	Newly quarantined 24 hours	Cumulative number	Number discharged	Number in quarantine now
Erongo	61	5443	5401	42
Hardap	0	1767	1715	52
Kavango (East and West)	1	1378	1370	8
Khomas	20	3458	3430	28
//Kharas	0	5950	5839	111
Kunene	139	4906	4794	112
Ohangwena	0	695	695	0
Omaheke	100	6391	6163	228
Omusati	0	569	569	0
Oshana	0	400	400	0
Oshikoto	65	12348	11604	744
Otjozondjupa	0	1476	1453	23
Zambezi	0	1791	1624	167
Total	386	46572	45057	1515

➤ Since March 2020, **46572** people have been placed into mandatory quarantine facilities around the country.

➤ A total of **1515** people are currently in quarantine, with **386** new admissions.

PUBLIC HEALTH ACTION (S)

- The COVID-19 vaccination programme has been extended to other regions and is ongoing.
- The government and developmental partners continue to prioritize the continuation of essential health services.

CHALLENGES

- Lack of isolation units and facilities for cases detected in boarding schools and police holding cells.

RECOMMENDATIONS

- Establish fully equipped isolation units and facilities for cases detected in schools and police holding cells.

APPROVED

W. Kalte Huisuho
 PP INCIDENT MANAGER
 11 MAY 2021

W. Beeti
 SECRETARIAT

For enquiries, please contact
Namibia Public Health Emergency Operations Centre;
 @ PHEOC@mhss.gov.na
 ☎ 0800 100 100
 📞 0851 100 100