



## NAMIBIA COVID-19 SITUATION REPORT NO. 420

<b>Outbreak Name</b>	COVID-19 outbreak	<b>Country affected</b>	Namibia
<b>Date &amp; Time</b>	12.05.2021 17h00	<b>Investigation start Date</b>	13 March 2020
<b>Prepared by</b>	Surveillance Team		

### HIGHLIGHTS/SITUATION UPDATE (12/05/2021)

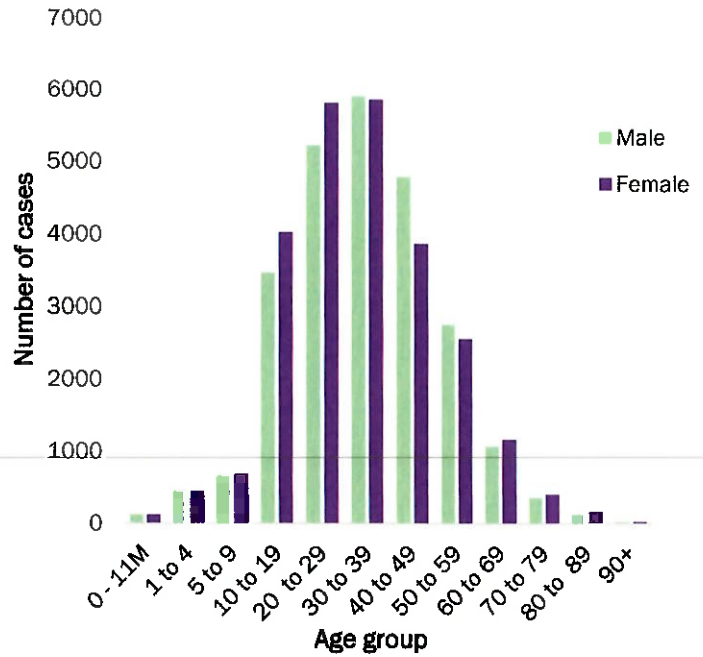
- A total of **50733** cases have been recorded to-date, representing **2%** of the population.
- Cases are equally distributed by gender at **50%**.
- Of the total confirmed cases, **2187 (4%)** are Health Workers.
  - 1721 (79%) State; 462 (21%) Private, 4 (0.2%) Non-Governmental Organizations.
  - 2064 (94%) recoveries and 6 (0.3%) deaths.
- The recovery rate now stands at **94%**.
- All fourteen (14) regions have reported confirmed cases; *Khomas and Erongo regions reported the highest with **18072 (36%)** and **8860 (17%)** respectively.*
- Of the total fatalities, **578 (82%)** are COVID-19 deaths while **126 (18%)** are COVID-19 related deaths.



**Table 1: Distribution of confirmed COVID-19 cases by region, 12 May 2021**

Region	Total No. of cases	Active cases	Recoveries	Cumulative Deaths	Cumulative deaths with co-morbidities	Non-COVID deaths	Vaccine data	Health Workers
Erongo	8861	194	8526	136	125	5	4733	229
Hardap	2980	134	2799	47	32	0	2220	72
//Kharas	3130	136	2948	46	37	0	1614	138
Kavango East	1959	32	1903	24	18	0	3596	119
Kavango West	229	0	228	2	2	0	1098	12
Khomas	18072	1087	16731	252	224	1	14328	889
Kunene	1536	29	1491	16	16	0	2203	56
Ohangwena	1289	106	1164	17	13	2	2529	63
Omaheke	1147	17	1114	16	12	0	2906	44
Omusati	1335	65	1259	11	8	0	2311	37
Oshana	3063	122	2904	36	23	1	2239	234
Oshikoto	2789	42	2725	20	18	2	992	123
Otjozondjupa	3566	252	3246	68	53	0	3558	131
Zambezi	777	25	739	13	9	0	676	40
<b>Total</b>	<b>50733</b>	<b>2242</b>	<b>47776</b>	<b>704</b>	<b>590</b>	<b>11</b>	<b>45003</b>	<b>2187</b>

- Of the total confirmed cases, **31811 (63%)** are in the 20-49 years age-brackets which constitutes the majority of the recorded cases.
- A total of **8908 (18%)** of the confirmed cases are among the 5-19 years category.
- The under 5 years age group make up **1151 (2%)** of the total cases whereas, **3453 (7%)** are above 60 years of age.

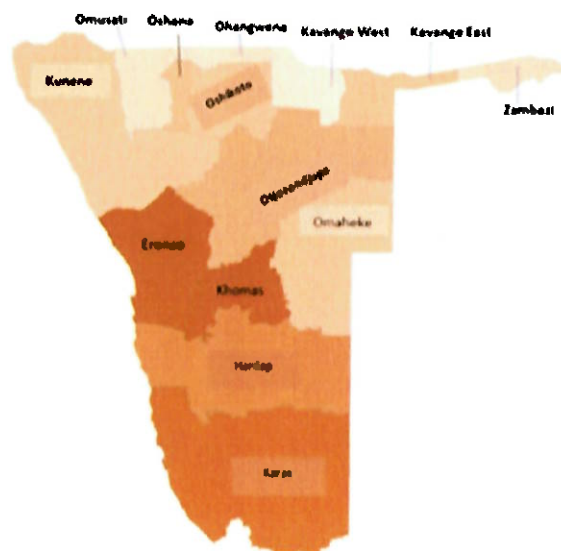


**Figure 1: Age and Sex distribution of COVID-19 confirmed cases 12 May 2021**

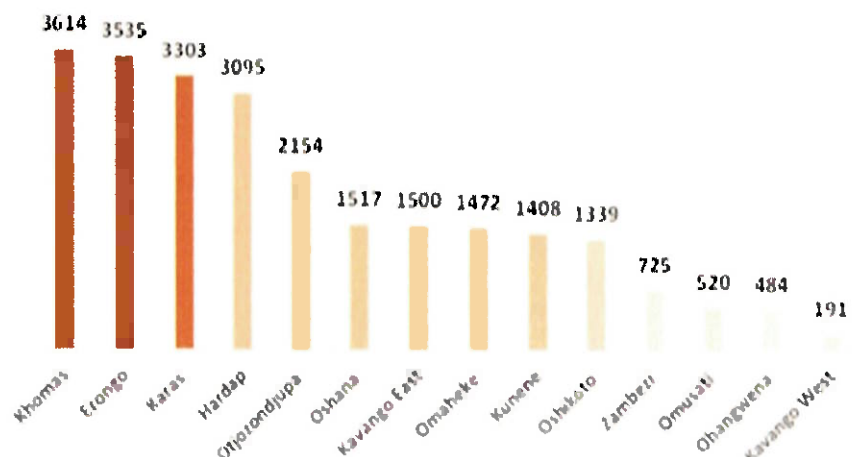
**Table 2: COVID-19 specimen recorded at the Laboratories 12 May 2021**

VARIABLES	TOTAL
Total samples received by the Laboratory	402759
Total samples tested	390640
Total samples re-tested	12002
Total positive results	50733
Total negative results	339854
Total samples discarded	117
Invalid results	0
Total pending results	46
Indeterminant/Inconclusive	7
Suspected cases in 24 hours (excluding re-tests)	1574

- To date, **402642** tests (including **12002** re-tests) have been conducted by NIP, Path-Care, NAMDEB, UNAM, Namib Poultry, Diagno, NAMPath, Namibia Central Pathology, High Care and Central Veterinary laboratories
- Since the beginning of the outbreak, **91586** contacts of confirmed cases have been identified, **459** new contacts were identified within the last 24 hours from 10 regions.
- Cumulatively, **88163** contacts have completed their monitoring period, while a total of **12751 (25%)** contacts of confirmed cases have tested positive.
- Today, **1682 (62%)** out of **2692** active contacts were monitored.



**Cumulative\_ confirmed cases per 100 000 people**



**Figure 2: Distribution of cumulative confirmed cases per 100 000 by region, 12 May 2021**

➤ The highest peaks of **3463 (7%)** and **3485 (7%)** cases were recorded during week 53 of 2020 and 1 of 2021 respectively (Figure 3).

➤ The National Call Center continues operations for 24 hours daily.

➤ Today (12/05/2021), **551** calls were answered including **12** alerts.

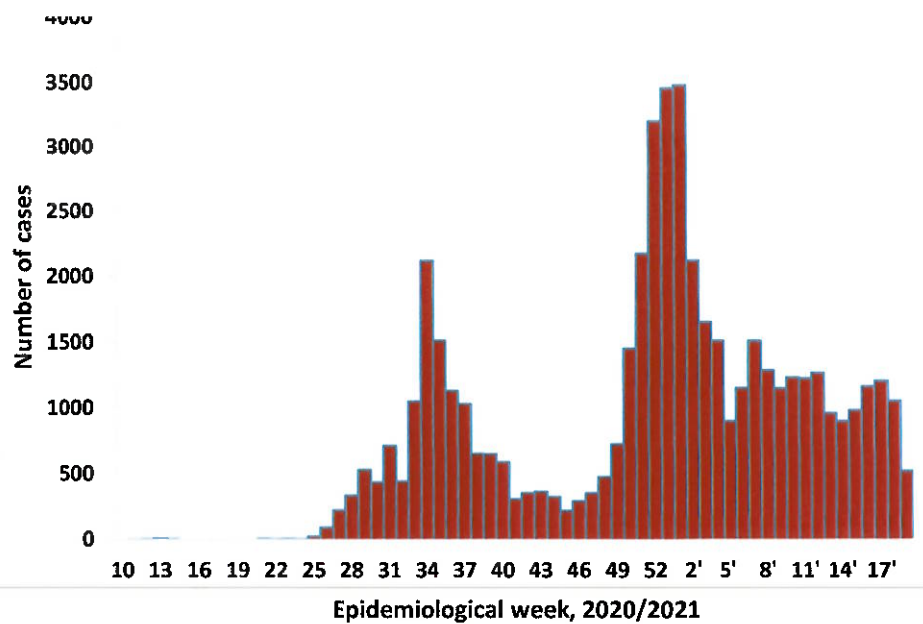


Figure 3: Epi-curve for confirmed COVID-19 cases, 12 May 2021

Table 3: Number of people in mandatory quarantine facilities, 12 May 2021

Region	Newly quarantined 24 hours	Cumulative number	Number discharged	Number in quarantine now
Erongo	0	5443	5401	42
Hardap	0	1767	1715	52
Kavango (East and West)	0	1378	1370	8
Khomas	1	3459	3430	29
//Kharas	81	6031	5887	144
Kunene	0	4906	4794	112
Ohangwena	0	695	695	0
Omaheke	24	6415	6319	96
Omusati	0	569	569	0
Oshana	0	400	400	0
Oshikoto	0	12348	11604	744
Otjozondjupa	41	1517	1476	41
Zambezi	0	1791	1624	167
<b>Total</b>	<b>147</b>	<b>46719</b>	<b>45284</b>	<b>1435</b>

➤ Since March 2020, **46719** people have been placed into mandatory quarantine facilities around the country.

➤ A total of **1435** people are currently in quarantine, with **147** new admissions.

**PUBLIC HEALTH ACTION (S)**

- The COVID-19 vaccination programme has been extended to all the regions and is ongoing.
- The government and developmental partners continue to prioritize the continuation of essential health services.

**CHALLENGES**

- Lack of isolation units and facilities for cases detected in boarding schools and police holding cells.

**RECOMMENDATIONS**

- Establish fully equipped isolation units and facilities for cases detected in schools and police holding cells.

APPROVED

*H. Alcega*  
 DP INCIDENT MANAGER  
 12 MAY 2021

*[Signature]*  
 SECRETARIAT

For enquiries, please contact  
**Namibia Public Health Emergency Operations Centre;**  
 @ [PHEOC@mhss.gov.na](mailto:PHEOC@mhss.gov.na)  
 ☎ 0800 100 100  
 📞 0851 100 100