



## NAMIBIA COVID-19 SITUATION REPORT NO. 422

|                        |                     |                                 |               |
|------------------------|---------------------|---------------------------------|---------------|
| <b>Outbreak Name</b>   | COVID-19 outbreak   | <b>Country affected</b>         | Namibia       |
| <b>Date &amp; Time</b> | 14.05.2021<br>17h00 | <b>Investigation start Date</b> | 13 March 2020 |
| <b>Prepared by</b>     | Surveillance Team   |                                 |               |

### HIGHLIGHTS/SITUATION UPDATE (14/05/2021)

#### CUMULATIVE

**Tested 405616**

**Confirmed 51113**

**Active 2343**

**Recoveries 48049**

**Deaths 710**

#### TOTAL TODAY

**Tested 1953**

**Confirmed 164**

**Active 2343**

**Recoveries 103**

**Deaths 5**

- A total of **51113** cases have been recorded to-date, representing **2%** of the population.
- Cases are equally distributed by gender at **50%**.
- Of the total confirmed cases, **2209 (4%)** are Health Workers.
  - 1743 (79%) State; 462 (21%) Private, 4 (0.2%) Non-Governmental Organizations.
  - 2115 (96%) recoveries and 6 (0.3%) deaths.
- The recovery rate now stands at **94%**.
- All fourteen (14) regions have reported confirmed cases; **Khomas and Erongo** regions reported the highest with **18174 (36%)** and **8900 (17%)** respectively.
- Of the total fatalities, **583 (82%)** are COVID-19 deaths while **127 (18%)** are COVID-19 related deaths.

**Table 1: Distribution of confirmed COVID-19 cases by region, 14 May 2021**

| Region       | Total No. of cases | Active cases | Recoveries   | Cumulative Deaths | Cumulative deaths with co-morbidities | Non-COVID deaths | Vaccine data | Health Workers |
|--------------|--------------------|--------------|--------------|-------------------|---------------------------------------|------------------|--------------|----------------|
| Erongo       | 8900               | 163          | 8596         | 136               | 125                                   | 5                | 5301         | 232            |
| Hardap       | 3023               | 159          | 2816         | 48                | 33                                    | 0                | 2454         | 72             |
| //Kharas     | 3152               | 136          | 2968         | 48                | 39                                    | 0                | 2085         | 138            |
| Kavango East | 1964               | 33           | 1907         | 24                | 18                                    | 0                | 3807         | 121            |
| Kavango West | 229                | 0            | 227          | 2                 | 2                                     | 0                | 1169         | 12             |
| Khomas       | 18174              | 1114         | 16805        | 254               | 226                                   | 1                | 16727        | 895            |
| Kunene       | 1558               | 42           | 1500         | 16                | 16                                    | 0                | 2324         | 56             |
| Ohangwena    | 1312               | 129          | 1164         | 17                | 13                                    | 2                | 2529         | 64             |
| Omaheke      | 1162               | 26           | 1120         | 16                | 12                                    | 0                | 3029         | 44             |
| Omusati      | 1342               | 72           | 1259         | 11                | 8                                     | 0                | 2436         | 37             |
| Oshana       | 3093               | 152          | 2904         | 36                | 23                                    | 1                | 2358         | 236            |
| Oshikoto     | 2812               | 48           | 2742         | 20                | 18                                    | 2                | 1153         | 124            |
| Otjozondjupa | 3607               | 237          | 3302         | 68                | 53                                    | 0                | 4077         | 137            |
| Zambezi      | 785                | 32           | 739          | 14                | 10                                    | 0                | 773          | 41             |
| <b>Total</b> | <b>51113</b>       | <b>2343</b>  | <b>48049</b> | <b>710</b>        | <b>596</b>                            | <b>11</b>        | <b>50222</b> | <b>2209</b>    |

# EPIDEMIOLOGICAL SITUATION IN NAMIBIA

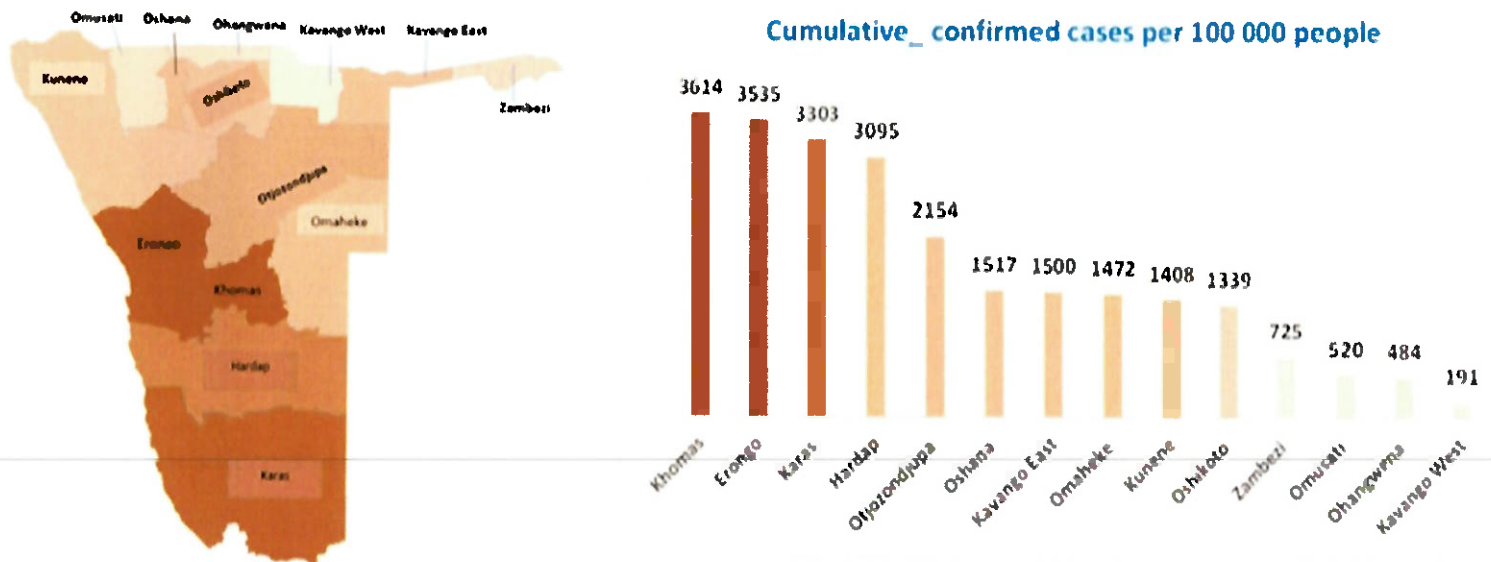


Figure 1: Distribution of cumulative confirmed cases per 100 000 by region, 14 May 2021

Table 2: Number of people in mandatory quarantine facilities, 14 May 2021

| Region                  | Newly quarantined 24 hours | Cumulative number | Number discharged | Number in quarantine now |
|-------------------------|----------------------------|-------------------|-------------------|--------------------------|
| Erongo                  | 0                          | 5443              | 5401              | 42                       |
| Hardap                  | 0                          | 1790              | 1735              | 55                       |
| Kavango (East and West) | 0                          | 1383              | 1370              | 13                       |
| Khomas                  | 0                          | 3463              | 3443              | 20                       |
| //Kharas                | 16                         | 6065              | 5895              | 170                      |
| Kunene                  | 0                          | 4906              | 4794              | 112                      |
| Ohangwena               | 0                          | 695               | 695               | 0                        |
| Omaheke                 | 0                          | 6459              | 6319              | 140                      |
| Omusati                 | 0                          | 569               | 569               | 0                        |
| Oshana                  | 0                          | 400               | 400               | 0                        |
| Oshikoto                | 0                          | 12382             | 12063             | 319                      |
| Otjozondjupa            | 0                          | 1517              | 1476              | 41                       |
| Zambezi                 | 0                          | 1791              | 1624              | 167                      |
| <b>Total</b>            | <b>16</b>                  | <b>46863</b>      | <b>45784</b>      | <b>1079</b>              |

Since March 2020, **46863** people have been placed into mandatory quarantine facilities around the country.

A total of **1079** people are currently in quarantine, with **16** new admissions.

➤ The highest peaks of **3463 (7%)** and **3485 (7%)** cases were recorded during week 53 of 2020 and 1 of 2021 respectively (Figure 2).

The National Call Center continues operations for 24 hours daily.

Today (14/05/2021), **531** calls were answered including **12** alerts.

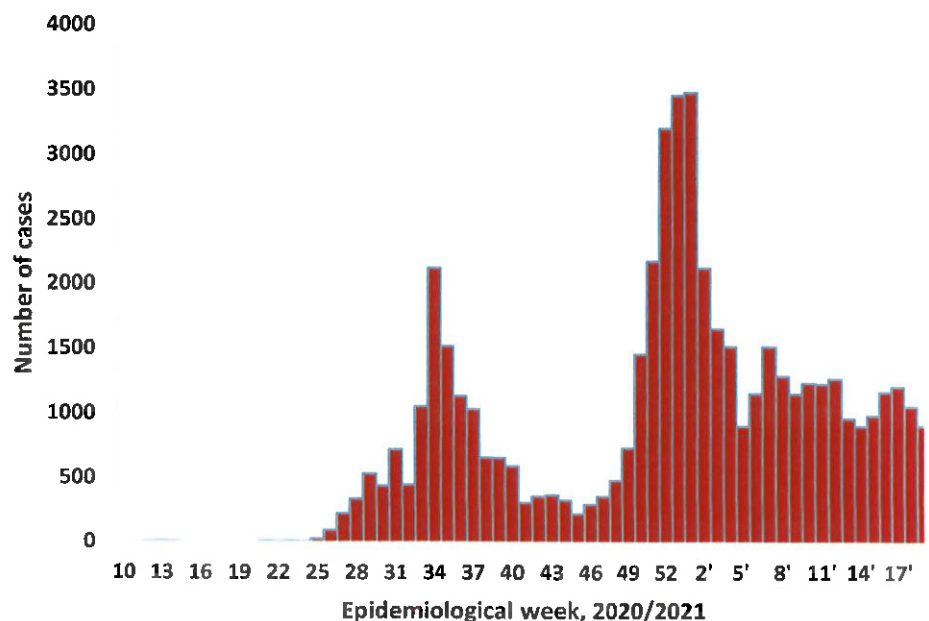


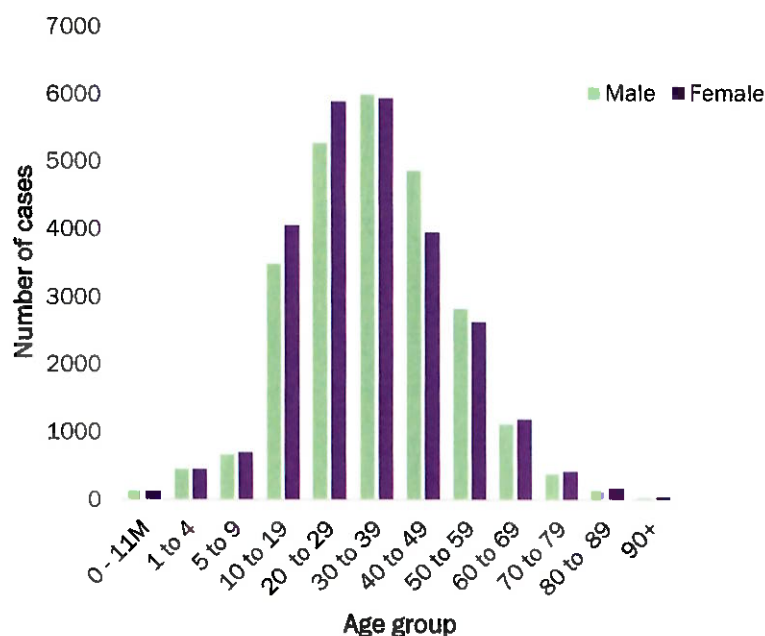
Figure 2: Epi-curve for confirmed COVID-19 cases, 14 May 2021

**Table 3: COVID-19 specimen recorded at the Laboratories**  
14 May 2021

| VARIABLES  | TOTAL  |
|--|--------|
| Total samples received by the Laboratory         | 405733 |
| Total samples tested                             | 393607 |
| Total samples re-tested                          | 12009  |
| Total positive results                           | 51113  |
| Total negative results                           | 342441 |
| Total samples discarded                          | 117    |
| Invalid results                                  | 0      |
| Total pending results                            | 46     |
| Indeterminant/Inconclusive                       | 7      |
| Suspected cases in 24 hours (excluding re-tests) | 1952   |

- To date, **405616** tests (including **12009** re-tests) have been conducted by NIP, Path-Care, NAMDEB, UNAM, Namib Poultry, Diagno, NAMPath, Namibia Central Pathology, High Care and Central Veterinary laboratories
- Since the beginning of the outbreak, **92056** contacts of confirmed cases have been identified, **329** new contacts were identified within the last 24 hours from 10 regions.
- Cumulatively, **88646** contacts have completed their monitoring period, while a total of **12794 (25%)** contacts of confirmed cases have tested positive.
- Today, **1531 (57%)** out of **2667** active contacts were monitored.

- Of the total confirmed cases, **32038 (63%)** are in the 20-49 years age-brackets which constitutes the majority of the recorded cases.
- A total of **8941 (17%)** of the confirmed cases are among the 5-19 years category.
- The under 5 years age group make up **1160 (2%)** of the total cases whereas, **3511 (7%)** are above 60 years of age.



**Figure 3: Age and Sex distribution of COVID-19 confirmed cases**  
14 May 2021

**PUBLIC HEALTH ACTION (S)**

- The COVID-19 vaccination programme has been extended to all the regions and is ongoing.
- The government and developmental partners continue to prioritize the continuation of essential health services.

**CHALLENGES**

- Lack of isolation units and facilities for cases detected in boarding schools and police holding cells.

**RECOMMENDATIONS**

- Establish fully equipped isolation units and facilities for cases detected in schools and police holding cells.

APPROVED

*PP*  
*Kaken Oshibanyi*  
INCIDENT MANAGER  
14 MAY 2021

*Abadi*  
SECRETARIAT

For enquiries, please contact  
**Namibia Public Health Emergency Operations Centre;**

[PHEOC@mhss.gov.na](mailto:PHEOC@mhss.gov.na)

0800 100 100

0851 100 100