



NAMIBIA COVID-19 SITUATION REPORT NO. 428

Outbreak Name	COVID-19 outbreak	Country affected	Namibia
Date & Time	20.05.2021 17h00	Investigation start Date	13 March 2020
Prepared by	Surveillance Team		

HIGHLIGHTS/SITUATION UPDATE (20/05/2021)



- A total of **52433** cases have been recorded to-date, representing **2%** of the population.
- Cases are equally distributed by gender at **50%**.
- Of the total confirmed cases, **2281 (4%)** are Health Workers.
 - 1808 (79%) State; 469 (21%) Private, 4 (0.2%) Non-Governmental Organizations.
 - 2115 (93%) recoveries and 6 (0.3%) deaths.
- The recovery rate now stands at **93%**.
- All fourteen (14) regions have reported confirmed cases; **Khomas and Erongo** regions reported the highest with **18680 (36%)** and **9026 (17%)** respectively.
- Of the total fatalities, **629 (83%)** are COVID-19 deaths while **130 (17%)** are COVID-19 related deaths.

Table 1: Distribution of confirmed COVID-19 cases and Vaccines administered by region, 20 May 2021

Region	Total No. of cases	Active cases	Recoveries	Cumulative Deaths	Non-COVID deaths	Health Workers	Vaccine data	
							1 st dose	2 nd dose
Erongo	9026	205	8673	143	5	235	6290	710
Hardap	3173	228	2893	52	0	76	2852	193
//Kharas	3263	138	3075	50	0	145	2445	131
Kavango East	1995	64	1907	24	0	126	4402	262
Kavango West	231	2	227	2	0	12	1968	67
Khomas	18680	1303	17107	269	1	920	20427	2199
Kunene	1605	58	1531	16	0	56	2879	177
Oshana	1333	28	1284	19	2	65	3238	247
Omaheke	1221	39	1157	25	0	46	3079	98
Omusati	1372	102	1259	11	0	41	3099	90
Oshana	3182	103	3035	43	1	245	2942	397
Oshikoto	2864	98	2742	22	2	130	1402	220
Otjozondjupa	3697	326	3302	69	0	143	4829	314
Zambezi	791	18	759	14	0	41	957	74
Total	52433	2712	48951	759	11	2281	60809	5179

EPIDEMIOLOGICAL SITUATION IN NAMIBIA

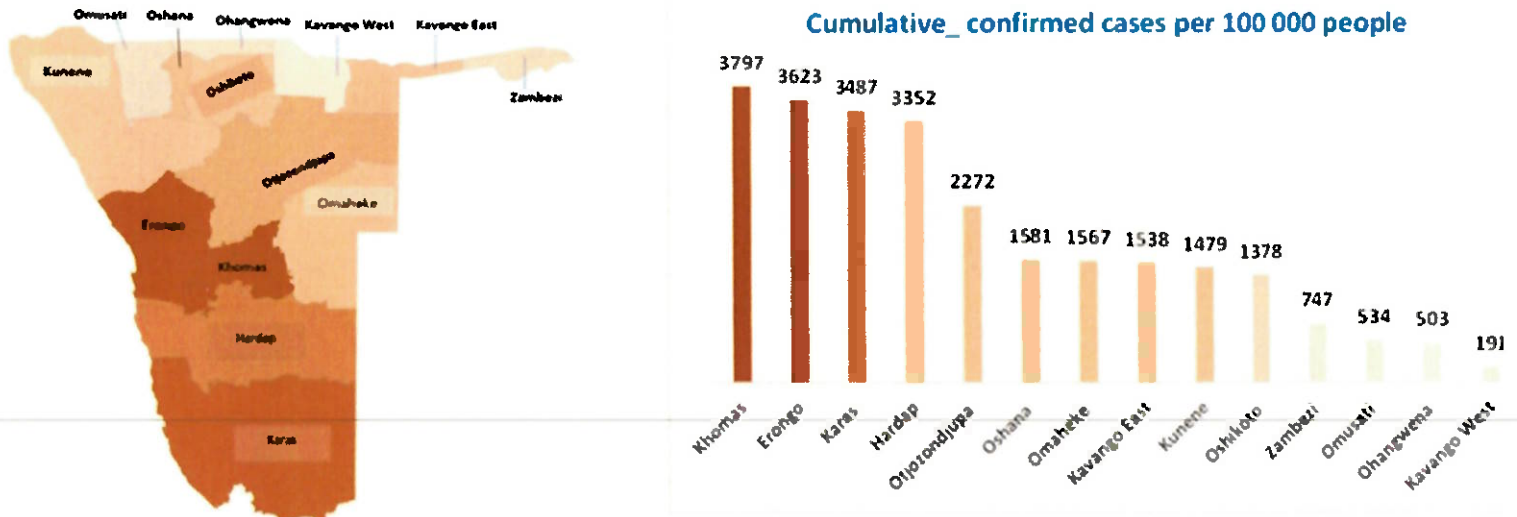


Figure 1: Distribution of cumulative confirmed cases per 100 000 by region, 20 May 2021

Table 2: Number of people in mandatory quarantine facilities, 20 May 2021

Region	Newly quarantined 24 hours	Cumulative number	Number discharged	Number in quarantine now
Erongo	0	5660	5461	199
Hardap	0	1823	1756	67
Kavango (East and West)	1	1397	1383	14
Khomas	0	3482	3462	20
//Kharas	0	6284	6016	268
Kunene	0	4988	4934	54
Ohangwena	0	695	695	0
Omaheke	67	6711	6479	232
Omusati	0	569	569	0
Oshana	0	400	400	0
Oshikoto	47	12696	12368	328
Otjozondjupa	0	1540	1476	64
Zambezi	0	1791	1624	167
Total	115	48036	46623	1413

Since March 2020, **48036** people have been placed into mandatory quarantine facilities around the country.

A total of **1413** people are currently in quarantine, with **115** new admissions.

➤ The highest peaks of **3463 (7%)** and **3485 (7%)** cases were recorded during week 53 of 2020 and 1 of 2021 respectively (Figure 2).

The National Call Center continues operations for 24 hours daily.

Today (20/05/2021), **572** calls were answered including **8** alerts.

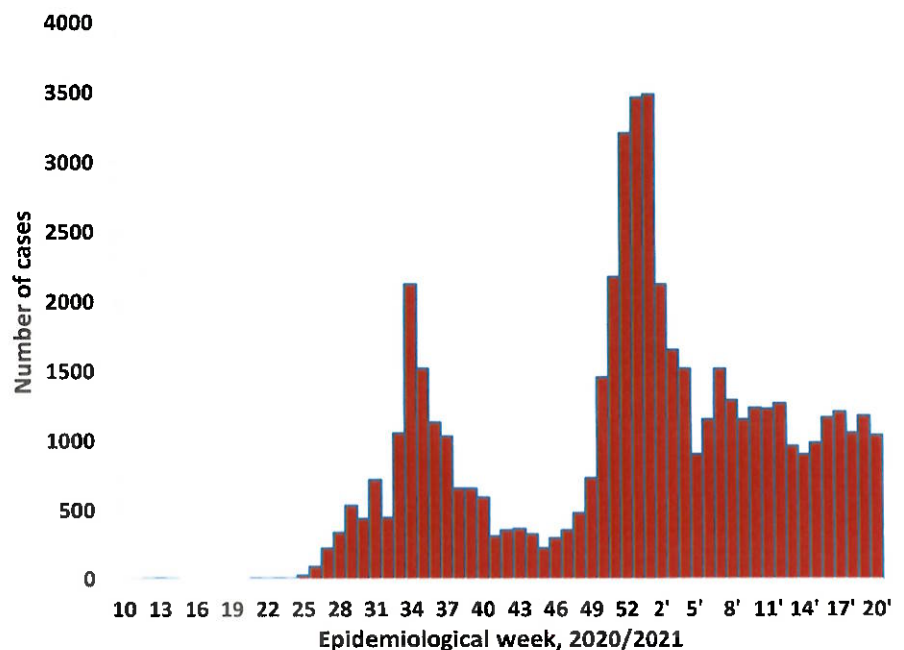


Figure 2: Epi-curve for confirmed COVID-19 cases, 20 May 2021

**Table 3: COVID-19 specimen recorded at the Laboratories
20 May 2021**

VARIABLES	TOTAL
Total samples received by the Laboratory	415227
Total samples tested	403057
Total samples re-tested	12053
Total positive results	52433
Total negative results	350571
Total samples discarded	117
Invalid results	0
Total pending results	46
Indeterminant/Inconclusive	7
Suspected cases in 24 hours (excluding re-tests)	2371

- To date, **415110** tests (including **12053** re-tests) have been conducted by NIP, Path-Care, NAMDEB, UNAM, Namib Poultry, Diagno, NAMPath, Namibia Central Pathology, High Care and Central Veterinary laboratories
- Since the beginning of the outbreak, **93806** contacts of confirmed cases have been identified, **291** new contacts were identified within the last 24 hours from 13 regions.
- Cumulatively, **89922** contacts have completed their monitoring period, while a total of **13304 (25%)** contacts of confirmed cases have tested positive.
- Today, **2602 (84%)** out of **3096** active contacts were monitored.

- Of the total confirmed cases, **32773 (63%)** are in the 20-49 years age-brackets which constitutes the majority of the recorded cases.
- A total of **9086 (17%)** of the confirmed cases are among the 5-19 years category.
- The under 5 years age group make up **1191 (2%)** of the total cases whereas, **3721 (7%)** are above 60 years of age.

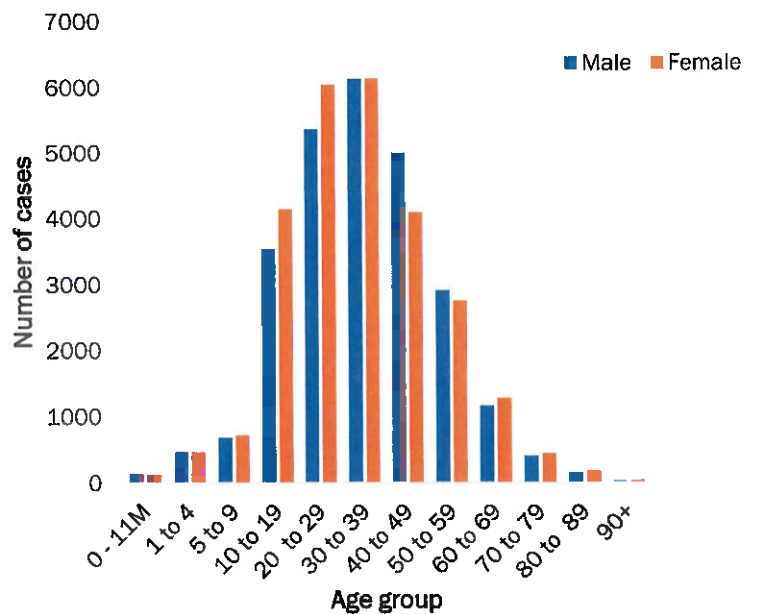


Figure 3: Age and Sex distribution of COVID-19 confirmed cases 20 May 2021

PUBLIC HEALTH ACTION (S)

- The COVID-19 vaccination programme is ongoing throughout the country
- The government and development partners continue to prioritize the continuation of essential health services.

CHALLENGES

- Non-adherence to COVID-19 Infection Prevention and Control (IPC) measures by the general public.

RECOMMENDATIONS

- Continue to give awareness on the importance of adhering to COVID -19 IPC measures; with the involvement of the Security Cluster.

APPROVED

INCIDENT MANAGER
20 MAY 2021

SECRETARIAT

For enquiries, please contact
Namibia Public Health Emergency Operations Centre;

PHEOC@mhss.gov.na

0800 100 100

0851 100 100