



NAMIBIA COVID-19 SITUATION REPORT NO. 431

Outbreak Name	COVID-19 outbreak	Country affected	Namibia
Date & Time	23.05.2021 17h00	Investigation start Date	13 March 2020
Prepared by	Surveillance Team		

HIGHLIGHTS/SITUATION UPDATE (23/05/2021)

CUMULATIVE

Tested 419304

Confirmed 53207

Active 3062

Recoveries 49360

Death 774

TOTAL TODAY

Tested 1094

Confirmed 261

Active 3062

Recoveries 147

Death 9

- A total of **53207** cases have been recorded to-date, representing **2%** of the population.
- More female cases **26882 (51%)** have been recorded compared to male cases **26325 (49%)**.
- Of the total confirmed cases, **2319 (4%)** are Health Workers.
 - 1839 (79%) State; 476 (21%) Private, 4 (0.2%) Non-Governmental Organizations.
 - 2115 (91%) recoveries and 6 (0.3%) deaths.
- The recovery rate now stands at **93%**.
- All fourteen (14) regions have reported confirmed cases; *Khomas and Erongo* regions reported the highest with **18933 (36%)** and **9121 (17%)** respectively.
- Of the total fatalities, **642 (83%)** are COVID-19 deaths while **132 (17%)** are COVID-19 related deaths.

Table 1: Distribution of confirmed COVID-19 cases and Vaccines administered by region, 23 May 2021

Region	Total No. of cases	Active cases	Recoveries	Cumulative Deaths	Non-COVID deaths	Health Workers	Vaccine data	
							1st dose	2nd dose
Erongo	9121	246	8725	145	5	240	6557	762
Hardap	3276	280	2942	54	0	77	2875	220
//Kharas	3305	143	3109	53	0	146	2490	157
Kavango East	2010	41	1945	24	0	129	4451	338
Kavango West	232	3	227	2	0	12	1968	88
Khomas	18933	1484	17173	275	1	937	20897	2305
Kunene	1623	54	1553	16	0	57	2948	226
Ohangwena	1365	60	1284	19	2	65	3294	301
Omaheke	1238	16	1197	25	0	47	3079	143
Omusati	1400	129	1259	12	0	43	3184	119
Oshana	3248	169	3035	43	1	250	3057	474
Oshikoto	2908	142	2742	22	2	132	1438	235
Otjozondjupa	3748	280	3398	70	0	143	4923	344
Zambezi	800	15	771	14	0	41	1013	98
Total	53207	3062	49360	774	11	2319	62174	5810

EPIDEMIOLOGICAL SITUATION IN NAMIBIA

**Table 2: COVID-19 specimen recorded at the Laboratories
23 May 2021**

VARIABLES	TOTAL
Total samples received by the Laboratory	419421
Total samples tested	407211
Total samples re-tested	12093
Total positive results	53207
Total negative results	353951
Total samples discarded	117
Invalid results	0
Total pending results	46
Indeterminant/Inconclusive	7
Suspected cases in 24 hours (excluding re-tests)	1082

- To date, **419304** tests (including **12093** re-tests) have been conducted by NIP, Path-Care, NAMDEB, UNAM, Namib Poultry, Diagno, NAMPath, Namibia Central Pathology, High Care and Central Veterinary laboratories
- Since the beginning of the outbreak, **94391** contacts of confirmed cases have been identified, **102** new contacts were identified within the last 24 hours from 10 regions.
- Cumulatively, **90525** contacts have completed their monitoring period, while a total of **13412 (25%)** contacts of confirmed cases have tested positive.
- Today, **484 (16%)** out of **3093** active contacts were monitored.

- Of the total confirmed cases, **33223 (62%)** are in the 20-49 years age-brackets which constitutes the majority of the recorded cases.
- A total of **9170 (17%)** of the confirmed cases are among the 5-19 years category.
- The under 5 years age group make up **1214 (2%)** of the total cases whereas, **3822 (7%)** are above 60 years of age.

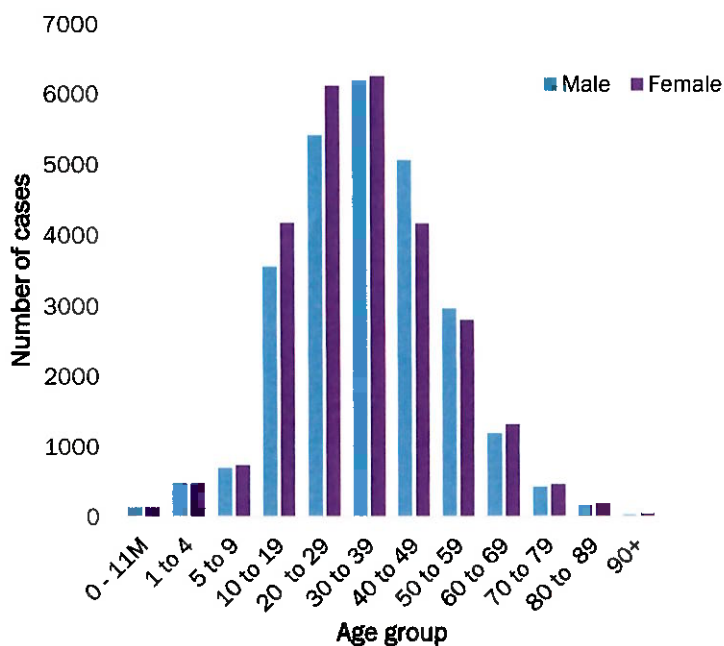


Figure 1: Age and Sex distribution of COVID-19 confirmed cases 22 May 2021

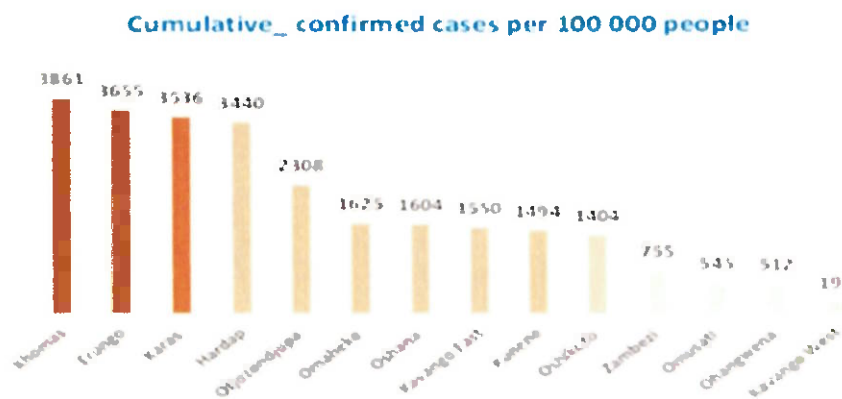
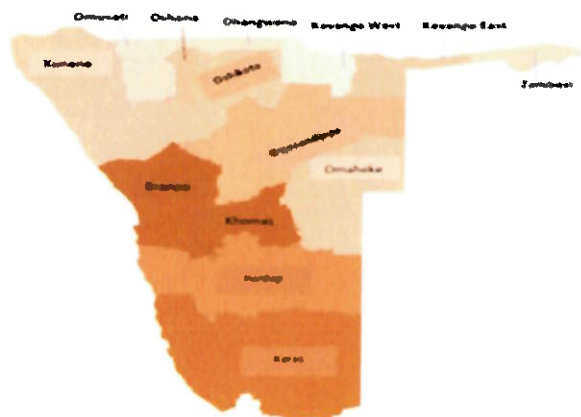


Figure 2: Distribution of cumulative confirmed cases per 100 000 by region, 23 May 2021

Table 3: Number of people in mandatory quarantine facilities, 23 May 2021

Region	Newly quarantined 24 hours	Cumulative number	Number discharged	Number in quarantine now
Erongo	0	5660	5461	199
Hardap	0	1859	1809	50
Kavango (East and West)	2	1399	1385	14
Khomas	6	3492	3462	30
//Kharas	66	6366	6032	334
Kunene	0	4988	4934	54
Ohangwena	0	695	695	0
Omaheke	0	6830	6627	203
Omusati	119	688	569	119
Oshana	0	400	400	0
Oshikoto	0	12736	12484	252
Otjozondjupa	0	1540	1476	64
Zambezi	0	1791	1624	167
Total	193	48444	46958	1486

Since March 2020, **48444** people have been placed into mandatory quarantine facilities around the country.

A total of **1486** people are currently in quarantine, with **193** new admissions.

> The highest peaks of **3463 (7%)** and **3485 (7%)** cases were recorded during week 53 of 2020 and 1 of 2021 respectively (Figure 3).

> The National Call Center continues operations for 24 hours daily.

> Today (23/05/2021), **503** calls were answered including **7** alerts.

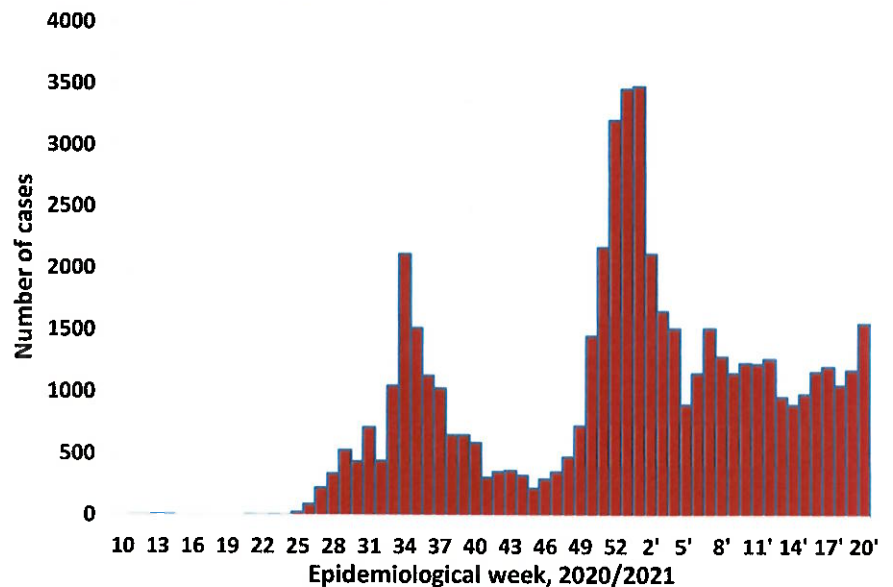


Figure 3: Epi-curve for confirmed COVID-19 cases, 23 May 2021

PUBLIC HEALTH ACTION (S)

- > The COVID-19 vaccination programme is ongoing throughout the country
- > The government and development partners continue to prioritize the continuation of essential health services.


CHALLENGES

- > Non-adherence to COVID-19 Infection Prevention and Control (IPC) measures by the general public.


RECOMMENDATIONS

- > Continue to give awareness on the importance of adhering to COVID -19 IPC measures; with the involvement of the Security Cluster.

APPROVED



INCIDENT MANAGER
23 MAY 2021



SECRETARIAT

For enquiries, please contact
Namibia Public Health Emergency Operations Centre;
 PHEOC@mhss.gov.na
 0800 100 100
 0851 100 100