



NAMIBIA COVID-19 SITUATION REPORT NO. 432

Outbreak Name	COVID-19 outbreak	Country affected	Namibia
Date & Time	24.05.2021 17h00	Investigation start Date	13 March 2020
Prepared by	Surveillance Team		

HIGHLIGHTS/SITUATION UPDATE (24/05/2021)

CUMULATIVE

Tested 420546

Confirmed 53432

Active 3092

Recoveries 49550

Death 779

TOTAL TODAY

Tested 1242

Confirmed 225

Active 3092

Recoveries 190

Death 5

- A total of **53432** cases have been recorded to-date, representing **2%** of the population.
- More female cases **27004 (51%)** have been recorded compared to male cases **26428 (49%)**.
- Of the total confirmed cases, **2329 (4%)** are Health Workers.
 - 1846 (79%) State; 479 (21%) Private, 4 (0.2%) Non-Governmental Organizations.
 - 2115 (91%) recoveries and 6 (0.3%) deaths.
- The recovery rate now stands at **93%**.
- All fourteen (14) regions have reported confirmed cases; **Khomas and Erongo** regions reported the highest with **19075 (36%)** and **9124 (17%)** respectively.
- Of the total fatalities, **645 (83%)** are COVID-19 deaths while **134 (17%)** are COVID-19 related deaths.

Table 1: Distribution of confirmed COVID-19 cases and Vaccines administered by region, 24 May 2021

Region	Total No. of cases	Active cases	Recoveries	Cumulative Deaths	Non-COVID deaths	Health Workers	Vaccine data	
							1 st dose	2 nd dose
Erongo	9124	199	8774	146	5	241	6669	781
Hardap	3291	276	2961	54	0	77	2919	258
//Kharas	3338	166	3119	53	0	146	2527	194
Kavango East	2019	49	1945	25	0	129	4451	338
Kavango West	232	3	227	2	0	12	1968	88
Khomas	19075	1563	17234	277	1	946	21312	2415
Kunene	1624	35	1573	16	0	57	2948	226
Ohangwena	1367	61	1284	20	2	65	3294	301
Omaheke	1253	16	1212	25	0	47	3079	184
Omusati	1402	131	1259	12	0	43	3262	169
Oshana	3248	169	3035	43	1	250	3057	474
Oshikoto	2910	144	2742	22	2	132	1481	257
Otjozondjupa	3749	265	3414	70	0	143	5057	439
Zambezi	800	15	771	14	0	41	1013	98
Total	53432	3092	49550	779	11	2329	63037	6222

EPIDEMIOLOGICAL SITUATION IN NAMIBIA

**Table 2: COVID-19 specimen recorded at the Laboratories
24 May 2021**

VARIABLES	TOTAL
Total samples received by the Laboratory	420663
Total samples tested	408449
Total samples re-tested	12097
Total positive results	53432
Total negative results	354964
Total samples discarded	117
Invalid results	0
Total pending results	46
Indeterminant/Inconclusive	7
Suspected cases in 24 hours (excluding re-tests)	1238

- To date, **420546** tests (including **12097** re-tests) have been conducted by NIP, Path-Care, NAMDEB, UNAM, Namib Poultry, Diagno, NAMPath, Namibia Central Pathology, High Care and Central Veterinary laboratories
- Since the beginning of the outbreak, **94713** contacts of confirmed cases have been identified, **322** new contacts were identified within the last 24 hours from 12 regions.
- Cumulatively, **90861** contacts have completed their monitoring period, while a total of **13458 (25%)** contacts of confirmed cases have tested positive.
- Today, **347 (12%)** out of **2956** active contacts were monitored.

- Of the total confirmed cases, **33343 (62%)** are in the 20-49 years age-brackets which constitutes the majority of the recorded cases.
- A total of **9199 (17%)** of the confirmed cases are among the 5-19 years category.
- The under 5 years age group make up **1222 (2%)** of the total cases whereas, **3853 (7%)** are above 60 years of age.

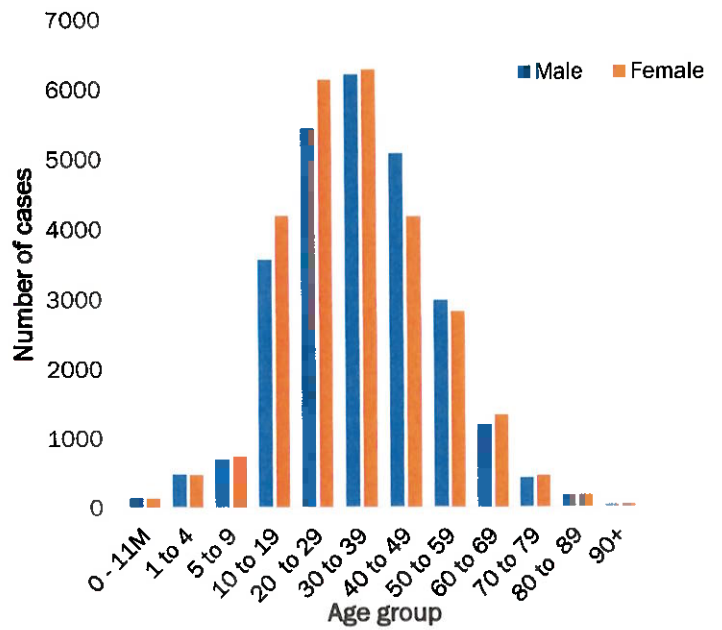


Figure 1: Age and Sex distribution of COVID-19 confirmed cases 23 May 2021

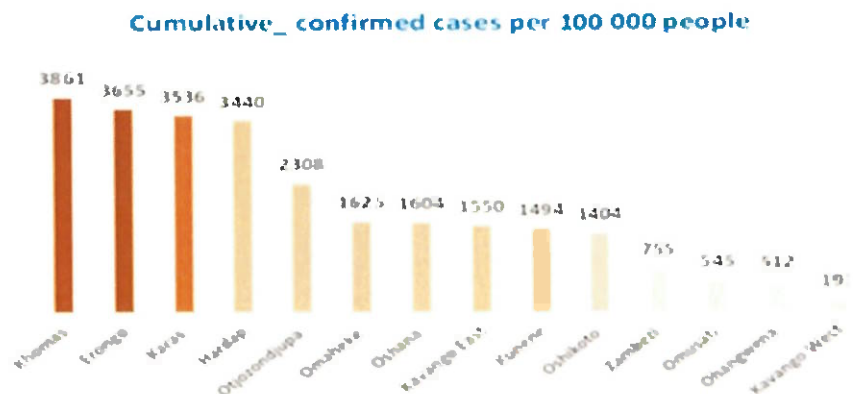
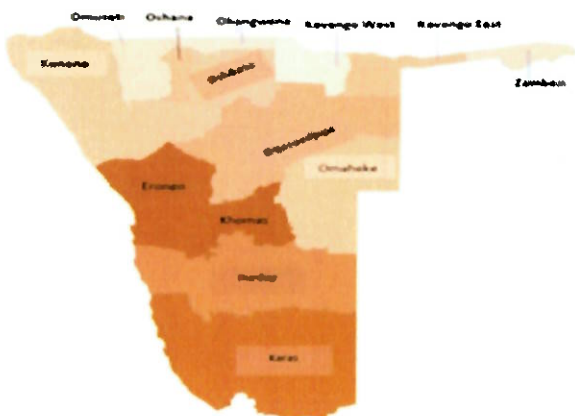


Figure 2: Distribution of cumulative confirmed cases per 100 000 by region, 24 May 2021

Table 3: Number of people in mandatory quarantine facilities, 24 May 2021

Region	Newly quarantined 24 hours	Cumulative number	Number discharged	Number in quarantine now
Erongo	0	5660	5461	199
Hardap	22	1881	1824	57
Kavango (East and West)	0	1399	1385	14
Khomas	3	3495	3462	33
//Kharas	0	6366	6032	334
Kunene	0	4988	4934	54
Ohangwena	0	695	695	0
Omaheke	88	6918	6642	276
Omusati	110	798	569	229
Oshana	0	400	400	0
Oshikoto	130	12866	12576	290
Otjozondjupa	0	1540	1476	64
Zambezi	0	1791	1624	167
Total	353	48797	47080	1717

Since March 2020, **48797** people have been placed into mandatory quarantine facilities around the country.

A total of **1717** people are currently in quarantine, with **353** new admissions.

➤ The highest peaks of **3463 (6%)** and **3485 (7%)** cases were recorded during week 53 of 2020 and 1 of 2021 respectively (Figure 3).

➤ The National Call Center continues operations for 24 hours daily.

➤ Today (24/05/2021), **579** calls were answered including **8** alerts.

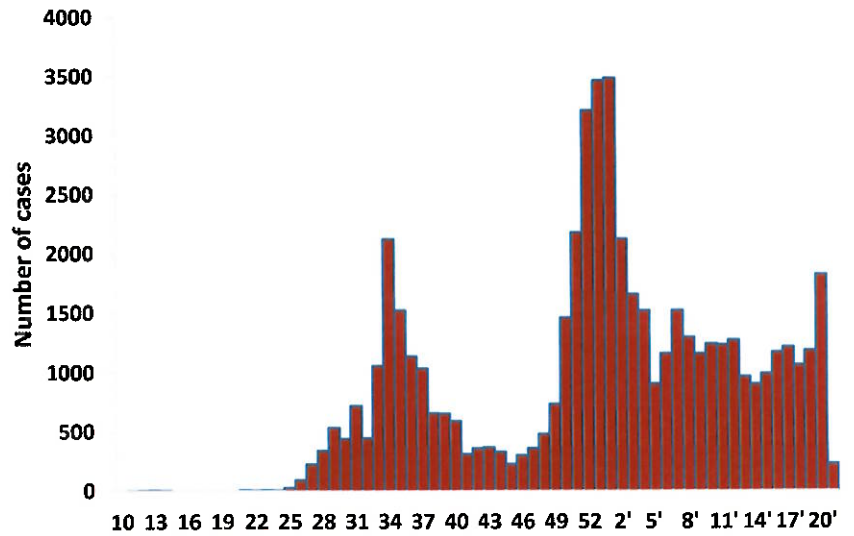


Figure 1: Age and Sex distribution of COVID-19 confirmed cases 23 May 2021

PUBLIC HEALTH ACTION (S)

- The COVID-19 vaccination programme is ongoing throughout the country
- The government and development partners continue to prioritize the continuation of essential health services.

CHALLENGES

- Non-adherence to COVID-19 Infection Prevention and Control (IPC) measures by the general public.

RECOMMENDATIONS

- Continue to give awareness on the importance of adhering to COVID -19 IPC measures; with the involvement of the Security Cluster.

APPROVED

INCIDENT MANAGER
24 MAY 2021

SECRETARIAT

For enquiries, please contact
Namibia Public Health Emergency Operations Centre;
PHEOC@mhss.gov.na
 0800 100 100
 0851 100 100