



## NAMIBIA COVID-19 SITUATION REPORT NO. 434

<b>Outbreak Name</b>	COVID-19 outbreak	<b>Country affected</b>	Namibia
<b>Date &amp; Time</b>	26.05.2021 17h00	<b>Investigation start Date</b>	13 March 2020
<b>Prepared by</b>	Surveillance Team		

### HIGHLIGHTS/SITUATION UPDATE (26/05/2021)

#### CUMULATIVE

Tested 423400

Confirmed 53903

Active 3427

Recoveries 49670

Death 795

#### TOTAL TODAY

Tested 2131

Confirmed 300

Active 3427

Recoveries 74

Death 6

- A total of **53903** cases have been recorded to-date, representing **2%** of the total population (**2550226**).
- More female cases **27255 (51%)** have been recorded compared to male cases **26648 (49%)**.
- Of the total confirmed cases, **2351 (4%)** are Health Workers.
  - 1867 (79%) State; 480 (20%) Private, 4 (0.2%) Non-Governmental Organizations.
  - 2213 (94%) recoveries and 6 (0.3%) deaths.
- The recovery rate now stands at **92%**.
- All fourteen (14) regions have reported confirmed cases; *Khomas and Erongo* regions reported the highest with **19379 (36%)** and **9160 (17%)** respectively.
- Of the total fatalities, **661 (83%)** are COVID-19 deaths while **134 (17%)** are COVID-19 related deaths. The case fatality rate now stands at **1%**.

**Table 1: Distribution of confirmed COVID-19 cases and Vaccines administered by region, 26 May 2021**

Region	Total No. of cases	Active cases	Recoveries	Cumulative Deaths	Non-COVID deaths	Health Workers	Vaccine data	
							1 <sup>st</sup> dose	2 <sup>nd</sup> dose
Erongo	9160	233	8774	148	5	242	6805	839
Hardap	3345	308	2980	57	0	79	2959	296
//Kharas	3368	164	3151	53	0	147	2565	247
Kavango East	2021	51	1945	25	0	129	4625	492
Kavango West	232	3	227	2	0	12	2008	141
Khomas	19379	1815	17278	285	1	962	21878	2558
Kunene	1624	30	1578	16	0	57	3042	381
Ohangwena	1367	61	1284	20	2	65	3653	455
Omaheke	1273	18	1230	25	0	48	3079	310
Omusati	1402	131	1259	12	0	43	3386	238
Oshana	3260	178	3035	46	1	251	3187	607
Oshikoto	2917	151	2742	22	2	132	1519	286
Otjozondjupa	3755	269	3416	70	0	143	5241	521
Zambezi	800	15	771	14	0	41	1090	125
Total	53903	3427	49670	795	11	2351	65037	7496

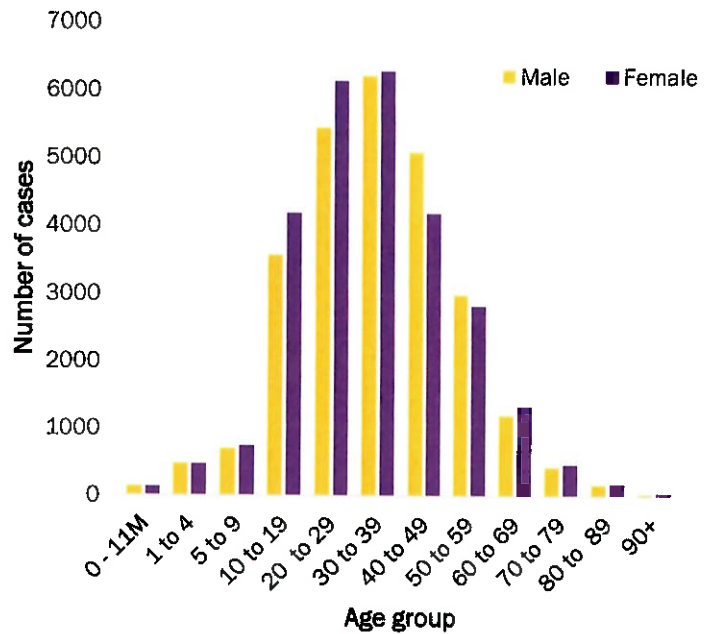
# EPIDEMIOLOGICAL SITUATION IN NAMIBIA

**Table 2: COVID-19 specimen recorded at the Laboratories  
26 May 2021**

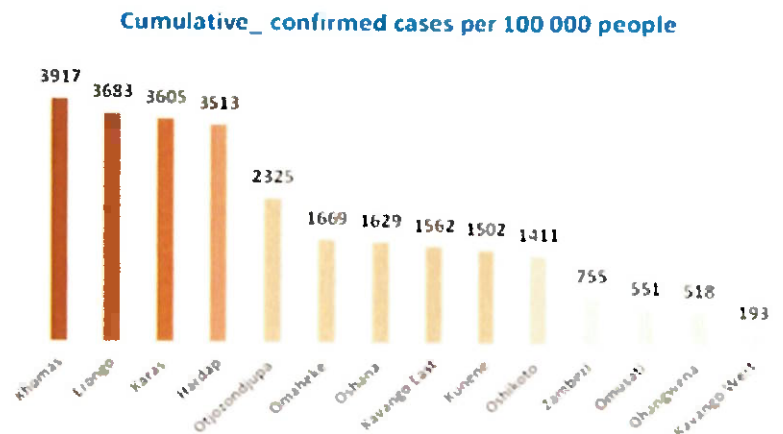
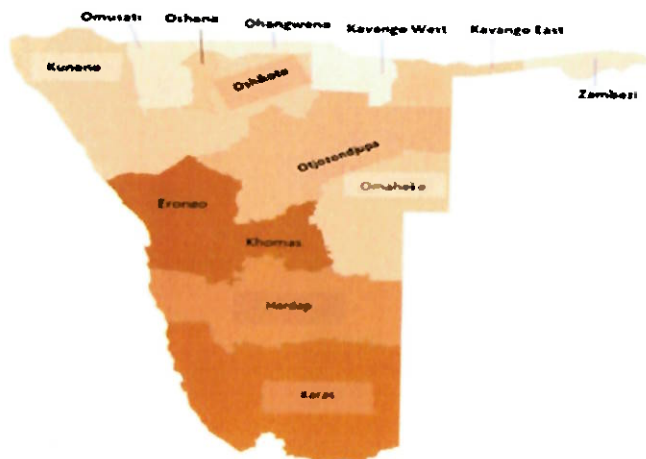
VARIABLES	TOTAL
Total samples received by the Laboratory	423517
Total samples tested	411286
Total samples re-tested	12114
Total positive results	53903
Total negative results	357330
Total samples discarded	117
Invalid results	0
Total pending results	46
Indeterminant/Inconclusive	7
Suspected cases in 24 hours (excluding re-tests)	2129

- To date, **423400** tests (including **12112** re-tests) have been conducted by NIP, Path-Care, NAMDEB, UNAM, Namib Poultry, Diagno, NAMPath, Namibia Central Pathology, High Care and Central Veterinary laboratories
- Since the beginning of the outbreak, **95469** contacts of confirmed cases have been identified, **537** new contacts were identified within the last 24 hours from 12 regions.
- Cumulatively, **91440** contacts have completed their monitoring period, while **118** contacts are lost to follow-up and a total of **13587 (25%)** contacts of confirmed cases have tested positive.
- Today, **2822 (88%)** out of **3225** active contacts were monitored.

- Of the total confirmed cases, **33626 (62%)** are in the 20-49 years age-brackets which constitutes the majority of the recorded cases.
- A total of **9252 (17%)** of the confirmed cases are among the 5-19 years category.
- The under 5 years age group make up **1229 (2%)** of the total cases whereas, **3913 (7%)** are above 60 years of age.



**Figure 1: Age and Sex distribution of COVID-19 confirmed cases  
26 May 2021**



**Figure 2: Distribution of cumulative confirmed cases per 100 000 by region, 26 May 2021**

**Table 3: Number of people in mandatory quarantine facilities, 26 May 2021**

Region	Newly quarantined 24 hours	Cumulative number	Number discharged	Number in quarantine now
Erongo	0	5683	5608	75
Hardap	28	1911	1858	53
Kavango (East and West)	0	1426	1418	8
Khomas	0	3495	3462	33
//Kharas	24	6449	6049	400
Kunene	0	4988	4934	54
Ohangwena	0	695	695	0
Omaheke	81	7025	6792	233
Omusati	8	806	569	237
Oshana	0	400	400	0
Oshikoto	105	12971	12600	371
Otjozondjupa	0	1540	1476	64
Zambezi	0	1791	1624	167
<b>Total</b>	<b>246</b>	<b>49180</b>	<b>47485</b>	<b>1695</b>

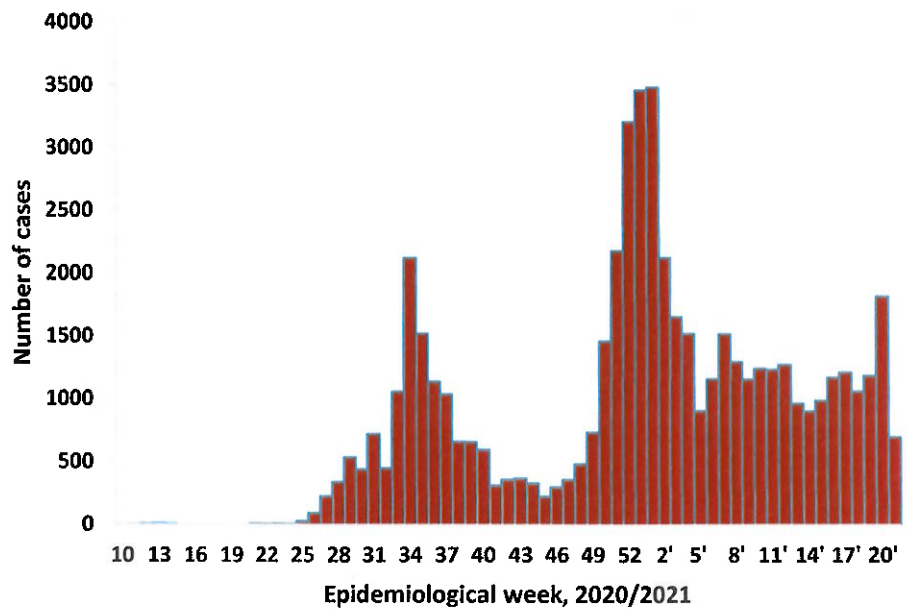
➤ Since March 2020, **49180** people have been placed into mandatory quarantine facilities around the country.

➤ A total of **1695** people are currently in quarantine, with **246** new admissions.

➤ The highest peaks of **3463 (6%)** and **3485 (6%)** cases were recorded during week 53 of 2020 and 1 of 2021 respectively (Figure 3).

➤ The National Call Center continues operations for 24 hours daily.

➤ Today (26/05/2021), **432** calls were answered including **6** alerts.



**Figure 3: Epi-curve for confirmed COVID-19 cases, 26 May 2021**

**PUBLIC HEALTH ACTION (S)**

The COVID-19 vaccination programme is ongoing throughout the country  
 The government and development partners continue to prioritize the continuation of essential health services.

**CHALLENGES**

➤ Non-adherence to COVID-19 Infection Prevention and Control (IPC) measures by the general public.

**RECOMMENDATIONS**

➤ Continue to give awareness on the importance of adhering to COVID -19 IPC measures; with the involvement of the Security Cluster.

**APPROVED**

**INCIDENT MANAGER**  
**26 MAY 2021**

**SECRETARIAT**

For enquiries, please contact  
**Namibia Public Health Emergency Operations Centre;**  
[PHEOC@mhss.gov.na](mailto:PHEOC@mhss.gov.na)  
 0800 100 100  
 0851 100 100