



NAMIBIA COVID-19 SITUATION REPORT NO. 448

Outbreak Name	COVID-19 outbreak	Country affected	Namibia
Date & Time	09.06.2021 17h00	Investigation start Date	13 March 2020
Prepared by	Surveillance Team		

HIGHLIGHTS/SITUATION UPDATE (09/06/2021)



- A total of **61 374** cases have been recorded to-date, representing **2%** of the total population (**2 550 226**).
- More female cases **31 457 (51%)** have been recorded compared to male cases **29 917 (49%)**.
- Of the total confirmed cases, **2 681 (4%)** are Health Workers.
- **2 142 (80%) State; 534 (20%) Private, 5 (0.2%) Non-Governmental Organizations.**
- **2213 (83%) recoveries and 10 (0.4%) deaths.**
- The recovery rate now stands at **87%**.
- **All fourteen (14) regions have reported confirmed cases; Khomas and Erongo regions reported the highest with 23 205 (38%) and 9 888 (16%) respectively.**
- **Of the total fatalities, 819 (85%) are COVID-19 deaths while 149 (15%) are COVID-19 related deaths. The case fatality rate now stands at 2%.**

Table 1: Distribution of confirmed COVID-19 cases by region, 09 June 2021

Region	Total No. of cases	Active cases	Recoveries	Cumulative Deaths	Cumulative deaths with co-morbidities	Non-COVID deaths	Health Workers
Erongo	9 888	604	9 120	159	143	5	267
Hardap	3 990	474	3 440	76	48	0	104
Karas	3 777	296	3 414	67	55	0	165
Kavango East	2 183	212	1 945	26	19	0	138
Kavango West	239	9	227	3	3	0	13
Khomas	23 205	4 437	18 421	346	294	1	1 135
Kunene	1 712	43	1 649	20	20	0	60
Ohangwena	1 528	99	1 402	25	19	2	77
Omaheke	1 632	78	1 520	34	28	0	53
Omusati	1 504	229	1 259	16	12	0	51
Oshana	3 588	196	3 332	59	38	1	275
Oshikoto	3 109	104	2 972	31	27	2	149
Otjozondjupa	4 145	418	3 636	91	70	0	152
Zambezi	874	53	806	15	12	0	42
Total	61 374	7 252	53 143	968	788	11	2 681

EPIDEMIOLOGICAL SITUATION IN NAMIBIA

➤ The highest peaks of **3 485 (6%)** and **3 544 (6%)** cases were recorded during week 1 and 22 of 2021 respectively (Figure 1).

➤ The National Call Center continues operations for 24 hours daily.

➤ Today (09/06/2021), **695** calls were answered including **14** alerts.

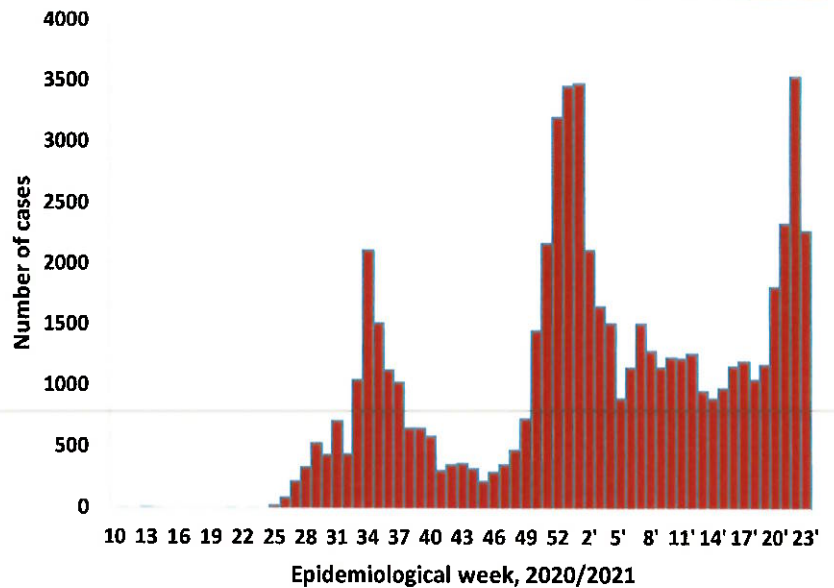
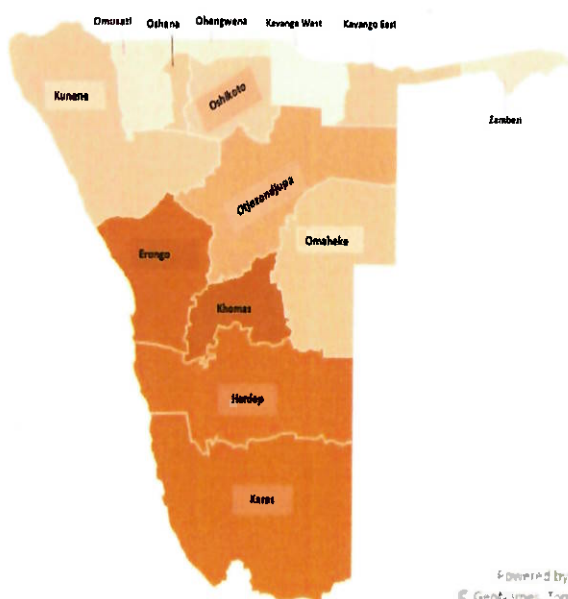


Figure 1: Epi-curve for confirmed COVID-19 cases, 09 June 2021

Table 2: Distribution of hospitalization of confirmed cases by region, 09 June 2021

Region	Hospitalized confirmed cases	Intensive Care Unit
Erongo	42	11
Hardap	14	0
ǀKharas	31	2
Kavango East	5	0
Kavango West	0	0
Khomas	185	40
Kunene	3	0
Ohangwena	7	0
Omaheke	8	0
Omusati	8	0
Oshana	34	16
Oshikoto	8	2
Otjozondjupa	17	0
Zambezi	7	0
Total	369	71



Cumulative_confirmed cases per 100 000 people

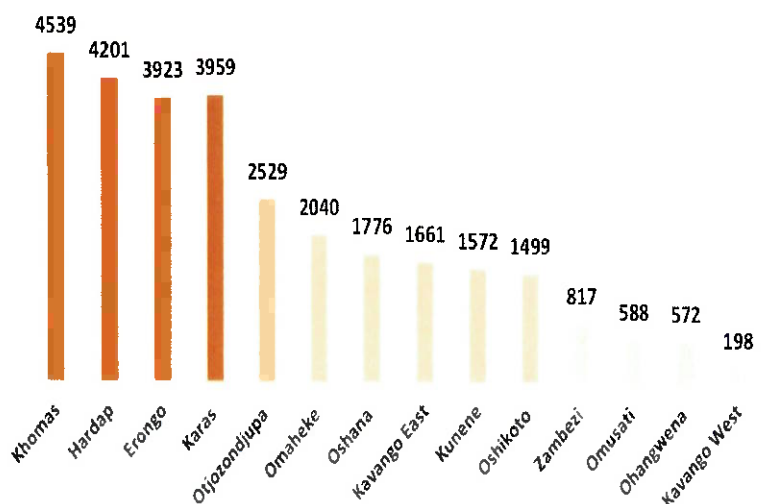


Figure 2: Distribution of cumulative confirmed cases per 100 000 by region, 09 June 2021

- Of the total confirmed cases, **38 163 (62%)** are in the 20-49 years age-brackets which constitutes the majority of the recorded cases.
- A total of **10 293 (17%)** of the confirmed cases are among the 5-19 years category.
- The under 5 years age group make up **1 365 (2%)** of the total cases whereas, **4 686 (8%)** are above 60 years of age.

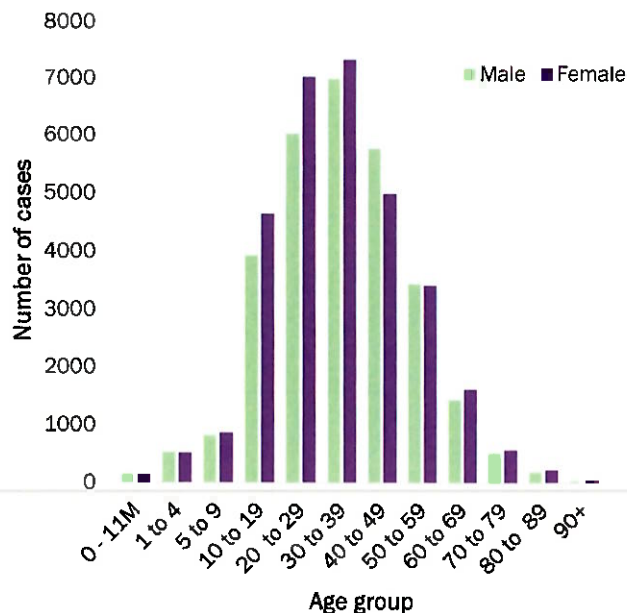


Figure 3: Age and Sex distribution of COVID-19 confirmed cases 09 June 2021

Table 3: Summary of COVID-19 vaccines administered, as of 09 June 2021

Region	Cumulative no. of persons vaccinated with doses of Sinopharm and AstraZeneca		Cumulative no. of Healthcare Workers vaccinated with doses of Sinopharm and AstraZeneca	
	1 st Dose	2 nd Dose	1 st Dose	2 nd Dose
Erongo	9 050	1 287	476	141
Hardap	3 373	610	276	51
Kharas	3 178	488	416	89
Kavango East	5 227	1 030	541	84
Kavango West	2 020	278	221	25
Khomas	28 894	3 791	1 752	535
Kunene	3 813	1 050	410	222
Ohangwena	4 392	814	408	110
Omaheke	3 380	799	253	98
Omusati	4 493	557	568	88
Oshana	4 258	908	712	286
Oshikoto	2 380	444	351	111
Otjozondjupa	6 961	1 224	438	117
Zambezi	1 426	308	208	46
Total	82 845	13 588	7 030	2 003

Table 4: Number of people in mandatory quarantine facilities, 09 June 2021

Region	Newly quarantined 24 hours	Cumulative number	Number discharged	Number in quarantine now
Erongo	0	5 683	5 608	75
Hardap	0	1 986	1 925	61
Kavango (East and West)	0	1 486	1 447	39
Khomas	2	3 518	3 488	30
Kharas	0	6 747	6 360	387
Kunene	75	5 267	5 183	84
Ohangwena	0	695	695	0
Omaheke	94	8 291	7 900	391
Omusati	0	957	848	109
Oshana	0	400	400	0
Oshikoto	64	13 843	13 396	447
Otjozondjupa	0	1 540	1 540	0
Zambezi	0	1 791	1 624	167
Total	235	52 204	50 414	1 790

- Since March 2020, **52 204** people have been placed into mandatory quarantine facilities around the country.
- A total of **1 790** people are currently in quarantine, with **235** new admissions.

Table 5: COVID-19 specimen recorded at the Laboratories
09 June 2021

VARIABLES	TOTAL
Total samples received by the Laboratory	454 232
Total samples tested	441 836
Total samples re-tested	12 279
Total positive results	61 374
Total negative results	380 409
Total samples discarded	117
Invalid results	0
Total pending results	46
Indeterminant/Inconclusive	7
Suspected cases in 24 hours (excluding re-tests)	2 720

- To date, **454 115** tests (including **12 279** re-tests) have been conducted by NIP, Path-Care, NAMDEB, UNAM, Namib Poultry, Diagno, NAMPath, Namibia Central Pathology, High Care and Central Veterinary laboratories
- Since the beginning of the outbreak, **100 566** contacts of confirmed cases have been identified, **599** new contacts were identified within the last 24 hours from 13 regions.
- Cumulatively, **95 815** contacts have completed their monitoring period, while **130** contacts are lost to follow-up and a total of **14 653 (24%)** contacts of confirmed cases have tested positive.
- Today, **2 848 (72%)** out of **3 978** active contacts were monitored.

PUBLIC HEALTH ACTION (S)

- The COVID-19 vaccination programme is ongoing throughout the country
- The government and development partners continue to prioritize the continuation of essential health services.


CHALLENGES


- Slow vaccine uptake among members of the public, and circulation of anti-vaccination information.
- Non-adherence to COVID-19 Infection Prevention and Control (IPC) measures by the general public.

RECOMMENDATIONS


- Encourage the public to get vaccinated, and strengthen community health awareness to counter anti-vaccination information in circulation.
- Continue to give awareness on the importance of adhering to COVID-19 IPC measures; with the involvement of the Security Cluster.


APPROVED



.....
INCIDENT MANAGER
09 June 2021


.....
SECRETARIAT

For enquiries, please contact
Namibia Public Health Emergency Operations Centre;

 PHEOC@mhss.gov.na

 0800 100 100

 0851 100 100