



NAMIBIA COVID-19 SITUATION REPORT NO. 449

Outbreak Name	COVID-19 outbreak	Country affected	Namibia
Date & Time	10.06.2021 17h00	Investigation start Date	13 March 2020
Prepared by	Surveillance Team		

HIGHLIGHTS/SITUATION UPDATE (10/06/2021)



- A total of **62 806** cases have been recorded to-date, representing **2%** of the total population (**2 550 226**).
- More female cases **32 274 (51%)** have been recorded compared to male cases **30 532 (49%)**.
- Of the total confirmed cases, **2743 (4%)** are Health Workers.
- **2 180 (79%) State; 558 (20%) Private, 5 (0.2%) Non-Governmental Organizations.**
- **2213 (81%) recoveries and 10 (0.4%) deaths.**
- The recovery rate now stands at **86%**.
- **All fourteen (14) regions have reported confirmed cases; Khomas and Erongo regions reported the highest with 24 049 (38%) and 10 014 (16%) respectively.**
- **Of the total fatalities, 823 (85%) are COVID-19 deaths while 150 (15%) are COVID-19 related deaths. The case fatality rate now stands at 2%.**

Table 1: Distribution of confirmed COVID-19 cases by region, 10 June 2021

Region	Total No. of cases	Active cases	Recoveries	Cumulative Deaths	Cumulative deaths with co-morbidities	Non-COVID deaths	Health Workers
Erongo	10 014	730	9 120	159	143	5	270
Hardap	4093	567	3 450	76	48	0	105
Karas	3 834	300	3 467	67	55	0	167
Kavango East	2 186	214	1 945	27	19	0	138
Kavango West	239	9	227	3	3	0	13
Khomas	24 049	4 778	18 922	348	296	1	1 179
Kunene	1 726	57	1 649	20	20	0	60
Ohangwena	1 539	110	1 402	25	19	2	77
Omaheke	1 709	155	1 520	34	28	0	55
Omusati	1 531	256	1 259	16	12	0	52
Oshana	3 644	251	3 332	60	39	1	275
Oshikoto	3 173	168	2 972	31	27	2	153
Otjozondjupa	4 192	440	3 661	91	70	0	156
Zambezi	877	53	808	16	12	0	43
Total	62 806	8 088	53 734	973	791	11	2 743

EPIDEMIOLOGICAL SITUATION IN NAMIBIA

➤ The highest peaks of **3 544 (6%)** and **3 714 (6%)** cases were recorded during week 22' and 23' of 2021 respectively (Figure 1).

➤ The National Call Center continues operations for 24 hours daily.

➤ Today (10/06/2021), **712** calls were answered including **13** alerts.

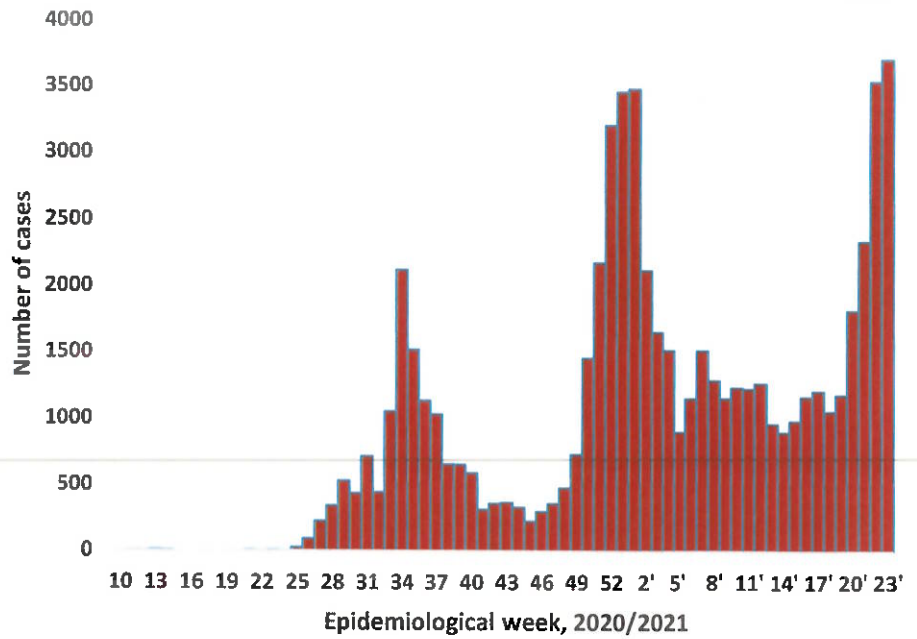


Figure 1: Epi-curve for confirmed COVID-19 cases, 10 June 2021

Table 2: Distribution of hospitalization of confirmed cases by region, 10 June 2021

Region	Hospitalized confirmed cases	Intensive Care Unit
Erongo	45	11
Hardap	14	0
Karas	31	3
Kavango East	6	0
Kavango West	0	0
Khomas	182	36
Kunene	3	0
Ohangwena	6	0
Omaheke	8	0
Omusati	8	0
Oshana	34	16
Oshikoto	5	2
Otjozondjupa	22	0
Zambezi	10	0
Total	374	68

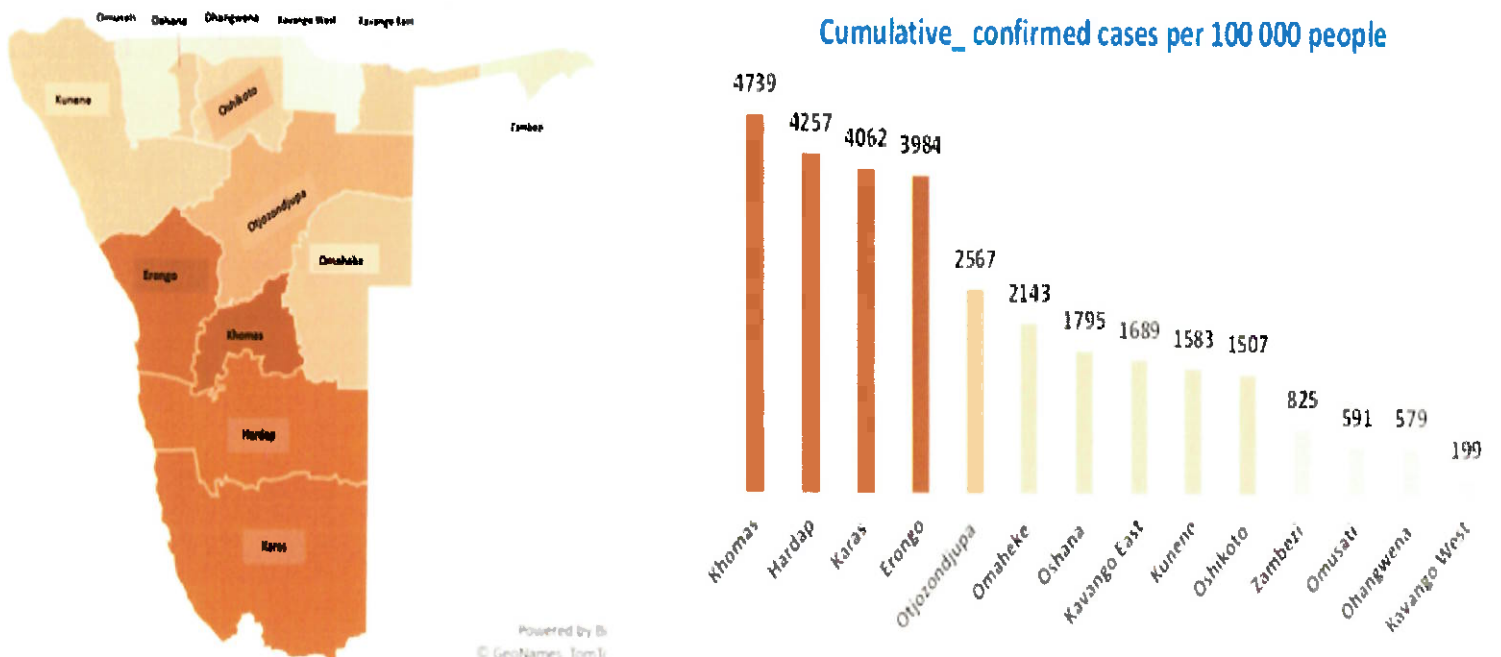


Figure 2: Distribution of cumulative confirmed cases per 100 000 by region, 10 June 2021

- Of the total confirmed cases, **39 036 (62%)** are in the 20-49 years age-brackets which constitutes the majority of the recorded cases.
- A total of **10 529 (17%)** of the confirmed cases are among the 5-19 years category.
- The under 5 years age group make up **1 396 (2%)** of the total cases whereas, **4 813 (8%)** are above 60 years of age.

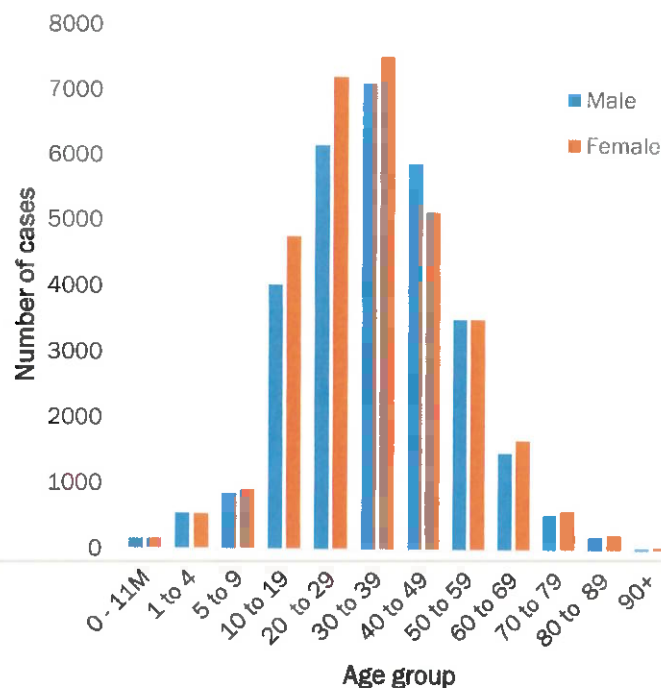


Figure 3: Age and Sex distribution of COVID-19 confirmed cases 10 June 2021

Table 3: Summary of COVID-19 vaccines administered, as of 10 June 2021

Region	Cumulative no. of persons vaccinated with doses of Sinopharm and AstraZeneca		Cumulative no. of Healthcare Workers vaccinated with doses of Sinopharm and AstraZeneca	
	1 st Dose	2 nd Dose	1 st Dose	2 nd Dose
Erongo	9 359	1 304	530	184
Hardap	3 473	630	287	67
Kharas	3 262	513	442	109
Kavango East	5 300	1 057	573	105
Kavango West	2 135	287	223	25
Khomas	29 863	4 130	1 989	626
Kunene	3 924	1 072	423	240
Ohangwena	4 561	853	434	123
Omaheke	3 446	829	260	104
Omusati	4 683	577	608	99
Oshana	4 391	916	780	308
Oshikoto	2 516	454	389	120
Otjozondjupa	7 183	1 289	477	134
Zambezi	1 443	332	227	78
Total	85 539	14 243	7 642	2 322

Table 4: Number of people in mandatory quarantine facilities, 10 June 2021

Region	Newly quarantined 24 hours	Cumulative number	Number discharged	Number in quarantine now
Erongo	0	5 683	5 608	75
Hardap	192	2 178	1 939	239
Kavango (East and West)	12	1 498	1 476	22
Khomas	14	3 532	3 496	36
Kharas	0	6 747	6 360	387
Kunene	20	5 287	5 216	71
Ohangwena	0	695	695	0
Omaheke	0	8 291	7 900	391
Omusati	0	957	848	109
Oshana	0	400	400	0
Oshikoto	134	13 977	13 406	571
Otjozondjupa	0	1 540	1 540	0
Zambezi	200	1 991	1 819	172
Total	572	52 776	50 703	2 073

- Since March 2020, **52 776** people have been placed into mandatory quarantine facilities around the country.
- A total of **2 073** people are currently in quarantine, with **572** new admissions.

**Table 5: COVID-19 specimen recorded at the Laboratories
10 June 2021**

VARIABLES	TOTAL
Total samples received by the Laboratory	45 8443
Total samples tested	446 013
Total samples re-tested	12 313
Total positive results	62 806
Total negative results	383 154
Total samples discarded	117
Invalid results	0
Total pending results	46
Indeterminant/Inconclusive	7
Suspected cases in 24 hours (excluding re-tests)	4 177

- To date, **458 326** tests (including **12 313** re-tests) have been conducted by NIP, Path-Care, NAMDEB, UNAM, Namib Poultry, Diagno, NAMPath, Namibia Central Pathology, High Care and Central Veterinary laboratories
- Since the beginning of the outbreak, **101 052** contacts of confirmed cases have been identified, **486** new contacts were identified within the last 24 hours from 11 regions.
- Cumulatively, **96 099** contacts have completed their monitoring period, while **130** contacts are lost to follow-up and a total of **15 165 (24%)** contacts of confirmed cases have tested positive.
- Today, **2 796 (67%)** out of **4 176** active contacts were monitored.

PUBLIC HEALTH ACTION (S)

- The COVID-19 vaccination programme is ongoing throughout the country
- The government and development partners continue to prioritize the continuation of essential health services.

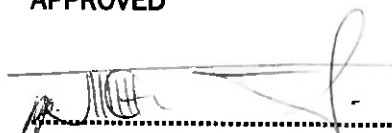
CHALLENGES

- Slow vaccine uptake among members of the public, and circulation of anti-vaccination information.
- Non-adherence to COVID-19 Infection Prevention and Control (IPC) measures by the general public.

RECOMMENDATIONS

- Encourage the public to get vaccinated, and strengthen community health awareness to counter anti-vaccination information in circulation.
- Continue to give awareness on the importance of adhering to COVID-19 IPC measures; with the involvement of the Security Cluster.

APPROVED




INCIDENT MANAGER
10 June 2021



SECRETARIAT

For enquiries, please contact
Namibia Public Health Emergency Operations Centre;

 PHEOC@mhss.gov.na

 0800 100 100

 0851 100 100