



NAMIBIA COVID-19 SITUATION REPORT NO. 447

Outbreak Name	COVID-19 outbreak	Country affected	Namibia
Date & Time	08.06.2021 17h00	Investigation start Date	13 March 2020
Prepared by	Surveillance Team		

HIGHLIGHTS/SITUATION UPDATE (08/06/2021)

CUMULATIVE	TOTAL TODAY
Tested 451 234	Tested 2 068
Confirmed 60 329	Confirmed 515
Active 6 599	Active 6 599
Recovered 52 769	Recovered 123
Death 950	Death 14

- A total of **60 329** cases have been recorded to-date, representing **2%** of the total population (**2 550 226**).
- More female cases **30 838 (51%)** have been recorded compared to male cases **29 491 (49%)**.
- Of the total confirmed cases, **2 649 (4%)** are Health Workers.
- **2 096 (79%)** State; **523 (20%)** Private, **4 (0.2%)** Non-Governmental Organizations.
- **2213 (84%)** recoveries and **10 (0.4%)** deaths.
- The recovery rate now stands at **87%**.
- All fourteen (14) regions have reported confirmed cases; **Khomas and Erongo** regions reported the highest with **22 586 (37%)** and **9 771 (16%)** respectively.
- Of the total fatalities, **801 (84%)** are COVID-19 deaths while **149 (16%)** are COVID-19 related deaths. The case fatality rate now stands at **2%**.

Table 1: Distribution of confirmed COVID-19 cases by region, 08 June 2021

Region	Total No. of cases	Active cases	Recoveries	Cumulative Deaths	Cumulative deaths with co-morbidities	Non-COVID deaths	Health Workers
Erongo	9 771	487	9 120	158	143	5	265
Hardap	3 948	598	3 282	68	43	0	103
Kharas	3 715	251	3 397	67	55	0	162
Kavango East	2 146	175	1 945	26	19	0	138
Kavango West	238	8	227	3	3	0	13
Khomas	22 586	3 896	18 348	341	291	1	1 121
Kunene	1 700	39	1 641	20	20	0	60
Ohangwena	1 513	124	1 364	23	18	2	76
Omaheke	1 608	121	1 453	34	28	0	53
Omusati	1 495	220	1 259	16	12	0	50
Oshana	3 559	168	3 332	58	38	1	271
Oshikoto	3 093	89	2 972	30	26	2	146
Otjozondjupa	4 085	372	3 623	90	69	0	149
Zambezi	872	51	806	16	12	0	42
Total	60 329	6 599	52 769	950	777	11	2 649

EPIDEMIOLOGICAL SITUATION IN NAMIBIA

- Of the total confirmed cases, **37 508 (62%)** are in the 20-49 years age-brackets which constitutes the majority of the recorded cases.
- A total of **1 012 (17%)** of the confirmed cases are among the 5-19 years category.
- The under 5 years age group make up **1 353 (2%)** of the total cases whereas, **4 610 (8%)** are above 60 years of age.

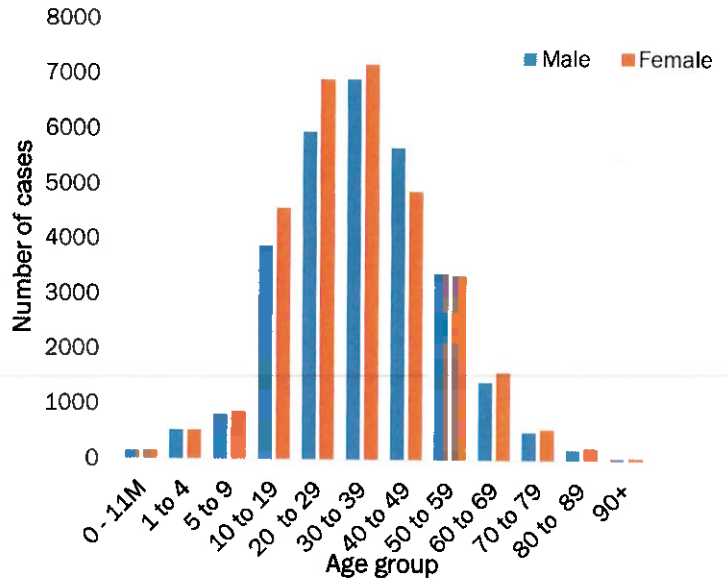


Figure 1: Age and Sex distribution of COVID-19 confirmed cases 08 June 2021

Table 2: Distribution of hospitalization of confirmed cases by region, 08 June 2021

Region	Hospitalized confirmed cases	Intensive Care Unit
Erongo	43	11
Hardap	11	0
//Kharas	27	3
Kavango East	5	0
Kavango West	0	0
Khomas	173	42
Kunene	3	0
Ohangwena	3	0
Omaheke	8	0
Omusati	8	0
Oshana	36	14
Oshikoto	6	2
Otjozondjupa	16	0
Zambezi	6	0
Total	345	72

- The highest peaks of **3 485 (6%)** and **3 544 (6%)** cases were recorded during week 1 and 22 of 2021 respectively (Figure 2).

- The National Call Center continues operations for 24 hours daily.
- Today (08/06/2021), **550** calls were answered including **9** alerts.

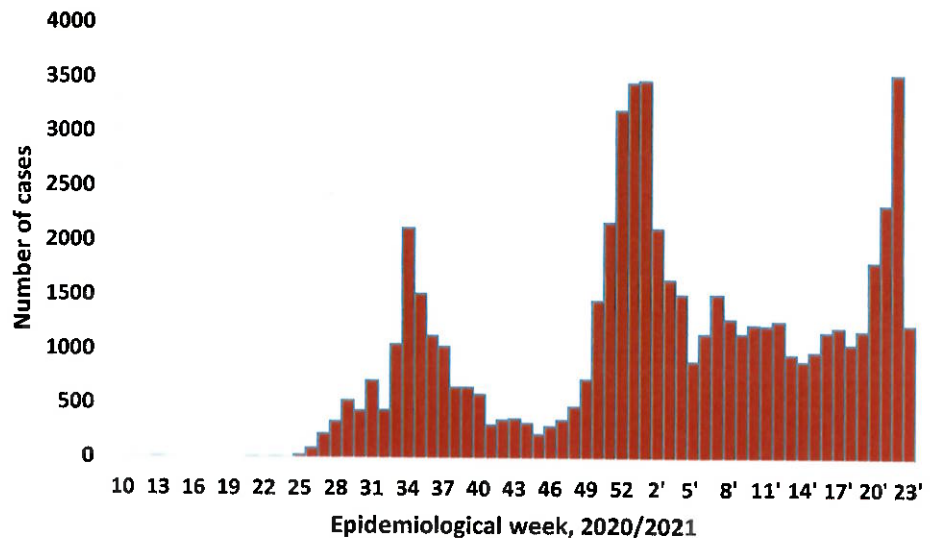
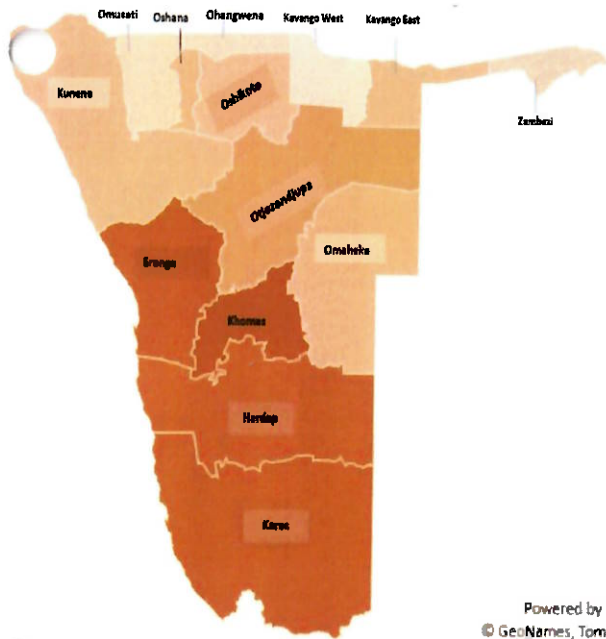


Figure 2: Epi-curve for confirmed COVID-19 cases, 08 June 2021

Table 3: Summary of COVID-19 vaccines administered, as of 08 June 2021

Region	Cumulative no. of persons vaccinated with doses of Sinopharm and AstraZeneca		Cumulative no. of Healthcare Workers vaccinated with doses of Sinopharm and AstraZeneca	
	1 st Dose	2 nd Dose	1 st Dose	2 nd Dose
Erongo	8 656	1 217	508	148
Hardap	3 289	552	281	56
//Kharas	3 112	458	441	104
Kavango East	5 178	976	567	101
Kavango West	2 020	263	223	25
Khomas	28 135	3 698	1 915	588
Kunene	3 539	888	418	223
Ohangwena	4 249	783	417	121
Omaheke	3 340	776	258	104
Omusati	4 316	537	602	97
Oshana	4 107	890	754	300
Oshikoto	2 234	426	372	116
Otjozondjupa	6 688	1 148	472	128
Zambezi	1 330	256	213	61
Total	80 193	12 868	7 441	2 172



Cumulative_confirmed cases per 100 000 people

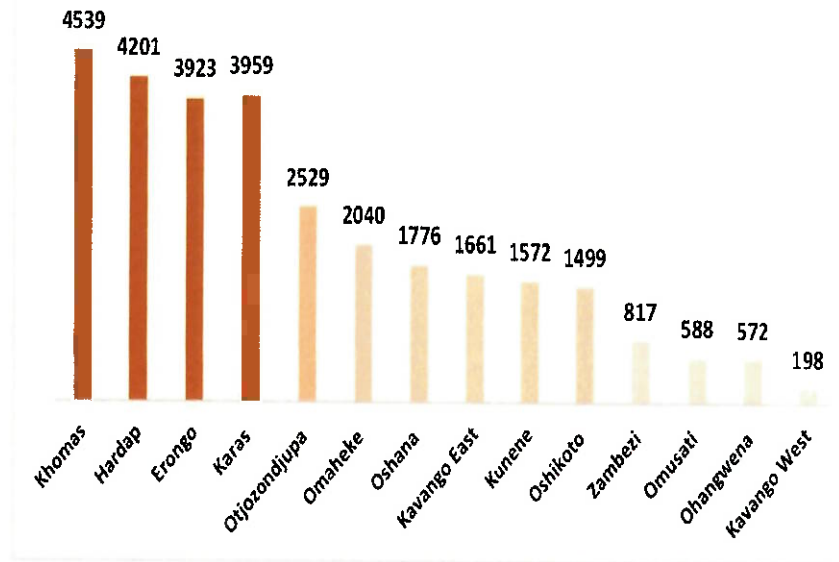


Figure 3: Distribution of cumulative confirmed cases per 100 000 by region, 08 June 2021

Table 4: COVID-19 specimen recorded at the Laboratories 08 June 2021

VARIABLES	TOTAL
Total samples received by the Laboratory	451 351
Total samples tested	438 974
Total samples re-tested	12 260
Total positive results	60 329
Total negative results	378 592
Total samples discarded	117
Invalid results	0
Total pending results	46
Indeterminant/Inconclusive	7
Suspected cases in 24 hours (excluding re-tests)	2 066

- To date, **451 234** tests (including **12 260** re-tests) have been conducted by NIP, Path-Care, NAMDEB, UNAM, Namib Poultry, Diagno, NAMPath, Namibia Central Pathology, High Care and Central Veterinary laboratories
- Since the beginning of the outbreak, **99 967** contacts of confirmed cases have been identified, **641** new contacts were identified within the last 24 hours from 14 regions.
- Cumulatively, **95 555** contacts have completed their monitoring period, while **130** contacts are lost to follow-up and a total of **14 574 (24%)** contacts of confirmed cases have tested positive.
- Today, **3 051 (84%)** out of **3 636** active contacts were monitored.

Table 5: Number of people in mandatory quarantine facilities, 08 June 2021

Region	Newly quarantined 24 hours	Cumulative number	Number discharged	Number in quarantine now
Erongo	0	5 683	5 608	75
Hardap	8	1 986	1 925	61
Kavango (East and West)	0	1 486	1 447	39
Khomas	9	3 516	3 485	31
//Kharas	0	6 747	6 360	387
Kunene	0	5 192	5 130	62
Ohangwena	0	695	695	0
Omaheke	269	8 197	7 720	477
Omusati	8	957	840	117
Oshana	0	400	400	0
Oshikoto	73	13 779	13 313	466
Otjozondjupa	0	1 540	1 540	0
Zambezi	0	1 791	1 624	167
Total	367	51 969	50 087	1 882

- Since March 2020, **51 969** people have been placed into mandatory quarantine facilities around the country.
- A total of **1 882** people are currently in quarantine, with **367** new admissions.

PUBLIC HEALTH ACTION (S)

- The COVID-19 vaccination programme is ongoing throughout the country
- The government and development partners continue to prioritize the continuation of essential health services.

CHALLENGES

- Slow vaccine uptake among members of the public, and circulation of anti-vaccination information.
- Non-adherence to COVID-19 Infection Prevention and Control (IPC) measures by the general public.

RECOMMENDATIONS

- Encourage the public to get vaccinated, and strengthen community health awareness to counter anti-vaccination information in circulation.
- Continue to give awareness on the importance of adhering to COVID-19 IPC measures; with the involvement of the Security Cluster.




APPROVED



INCIDENT MANAGER
08 June 2021



SECRETARIAT

For enquiries, please contact
Namibia Public Health Emergency Operations Centre;
 PHEOC@mhss.gov.na
 0800 100 100
 0851 100 100