



NAMIBIA COVID-19 SITUATION REPORT NO. 442

| | | | |
|------------------------|---------------------|---------------------------------|---------------|
| Outbreak Name | COVID-19 outbreak | Country affected | Namibia |
| Date & Time | 03.06.2021 17h00 | Investigation start Date | 13 March 2020 |
| Prepared by | Surveillance Team | | |

HIGHLIGHTS/SITUATION UPDATE (02/06/2021)



- A total of **57575** cases have been recorded to-date, representing **2%** of the total population (**2550226**).
- More female cases **29326 (51%)** have been recorded compared to male cases **28251 (49%)**.
- Of the total confirmed cases, **2529 (4%)** are Health Workers.
- **2020 (80%) State; 503 (20%) Private, 4 (0.2%) Non-Governmental Organizations.**
- **2213 (88%) recoveries and 9 (0.4%) deaths.**
- The recovery rate now stands at **90%**.
- **All fourteen (14) regions have reported confirmed cases; Khomas and Erongo regions reported the highest with **21220 (37%)** and **9482 (16%)** respectively.**
- **Of the total fatalities, **754 (83%)** are COVID-19 deaths while **145 (17%)** are COVID-19 related deaths. The case fatality rate now stands at **2%**.**

Table 1: Distribution of confirmed COVID-19 cases by region, 03 June 2021

| Region | Total No. of cases | Active cases | Recoveries | Cumulative Deaths | Cumulative deaths with co-morbidities | Non-COVID deaths | Health Workers |
|--------------|--------------------|--------------|--------------|-------------------|---------------------------------------|------------------|----------------|
| Erongo | 9482 | 301 | 9021 | 155 | 140 | 5 | 254 |
| Hardap | 3701 | 395 | 3242 | 64 | 40 | 0 | 95 |
| //Kharas | 3566 | 203 | 3302 | 61 | 51 | 0 | 155 |
| Kavango East | 2080 | 110 | 1945 | 25 | 19 | 0 | 135 |
| Kavango West | 236 | 6 | 227 | 3 | 3 | 0 | 12 |
| Khomas | 21220 | 3017 | 17880 | 322 | 273 | 1 | 1052 |
| Kunene | 1675 | 40 | 1618 | 17 | 17 | 0 | 60 |
| Oshana | 1460 | 90 | 1345 | 23 | 18 | 2 | 75 |
| Omaheke | 1434 | 58 | 1343 | 33 | 27 | 0 | 53 |
| Omusati | 1452 | 178 | 1259 | 15 | 11 | 0 | 45 |
| Oshana | 3462 | 74 | 3332 | 55 | 36 | 1 | 264 |
| Oshikoto | 3049 | 48 | 2972 | 27 | 23 | 2 | 142 |
| Otjozondjupa | 3933 | 291 | 3558 | 84 | 65 | 0 | 145 |
| Zambezi | 827 | 35 | 777 | 15 | 11 | 0 | 42 |
| Total | 57577 | 4846 | 51821 | 899 | 734 | 11 | 2529 |

EPIDEMIOLOGICAL SITUATION IN NAMIBIA

- Of the total confirmed cases, **35875 (62%)** are in the 20-49 years age-brackets which constitutes the majority of the recorded cases.
- A total of **9703 (17%)** of the confirmed cases are among the 5-19 years category.
- The under 5 years age group make up **1295 (2%)** of the total cases whereas, **4323 (8%)** are above 60 years of age.

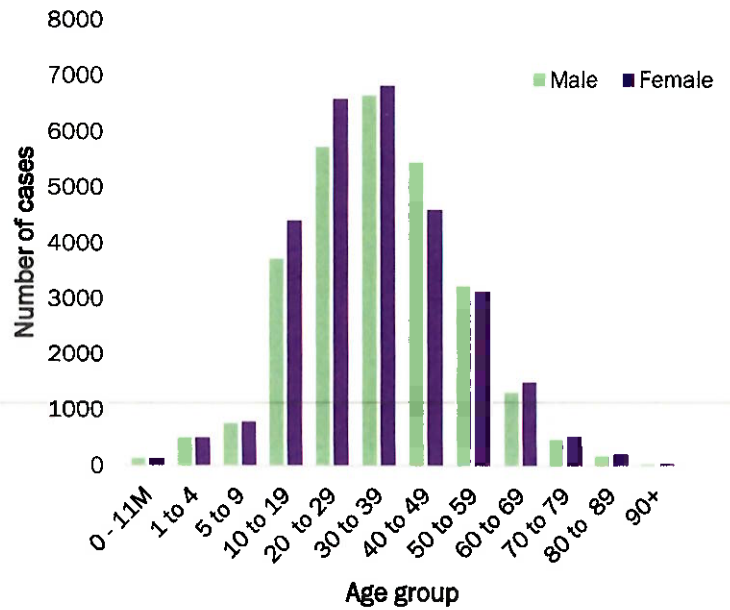


Figure 1: Age and Sex distribution of COVID-19 confirmed cases 03 June 2021

Table 2: Distribution of hospitalization of confirmed cases by region, 03 June 2021

| Region | Hospitalized confirmed cases | Intensive Care Unit |
|--------------|------------------------------|---------------------|
| Erongo | 31 | 8 |
| Hardap | 9 | 0 |
| //Kharas | 25 | 2 |
| Kavango East | 3 | 1 |
| Kavango West | 0 | 0 |
| Khomas | 159 | 32 |
| Kunene | 4 | 0 |
| Ohangwena | 8 | 0 |
| Omaheke | 8 | 0 |
| Omusati | 6 | 0 |
| Oshana | 27 | 11 |
| Oshikoto | 9 | 1 |
| Otjozondjupa | 14 | 0 |
| Total | 311 | 56 |

- The highest peaks of **3463 (6%)** and **3485 (6%)** cases were recorded during week 53 of 2020 and 1 of 2021 respectively (Figure 2).

- The National Call Center continues operations for 24 hours daily.
- Today (03/06/2021), **546** calls were answered including **8** alerts.

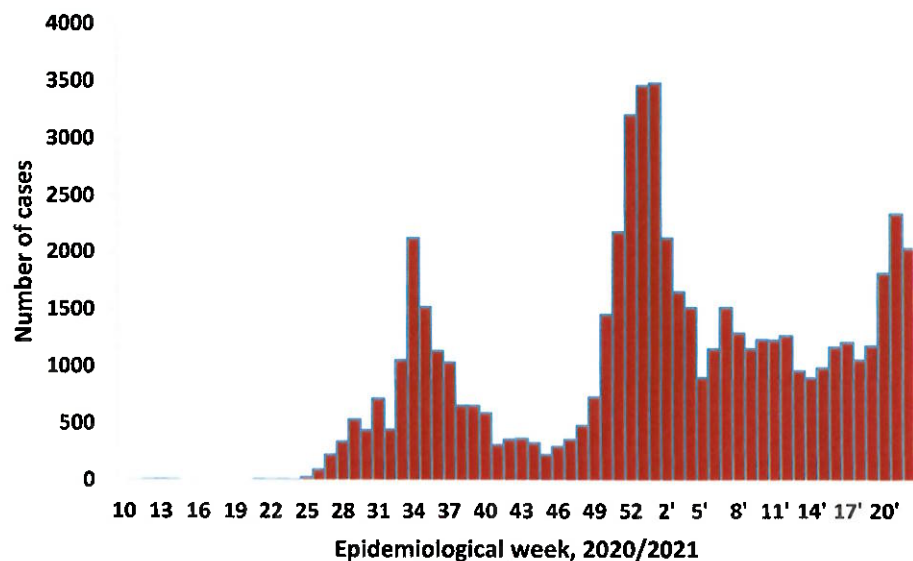


Figure 2: Epi-curve for confirmed COVID-19 cases, 03 June 2021

Table 3: Summary of COVID-19 vaccines administered, as of 03 June 2021

| Region | Cumulative no. of persons vaccinated with doses of Sinopharm and AZ | | Cumulative no. of Healthcare Workers vaccinated with doses of Sinopharm and AZ | |
|--------------|---------------------------------------------------------------------|----------------------|--------------------------------------------------------------------------------|----------------------|
| | 1 st Dose | 2 nd Dose | 1 st Dose | 2 nd Dose |
| Erongo | 7929 | 1043 | 484 | 141 |
| Hardap | 3108 | 463 | 276 | 51 |
| //Karas | 2906 | 372 | 423 | 102 |
| Kavango East | 4829 | 819 | 541 | 84 |
| Kavango West | 2008 | 234 | 222 | 25 |
| Khomas | 25562 | 3238 | 1785 | 545 |
| Kunene | 3455 | 831 | 414 | 222 |
| Ohangwena | 4178 | 756 | 412 | 118 |
| Omaheke | 3216 | 662 | 253 | 103 |
| Omusati | 3973 | 469 | 583 | 90 |
| Oshana | 3695 | 819 | 714 | 292 |
| Oshikoto | 1848 | 366 | 353 | 112 |
| Otjozondjupa | 6141 | 859 | 457 | 120 |
| Zambezi | 1262 | 202 | 208 | 46 |
| Total | 74110 | 11133 | 7125 | 2051 |

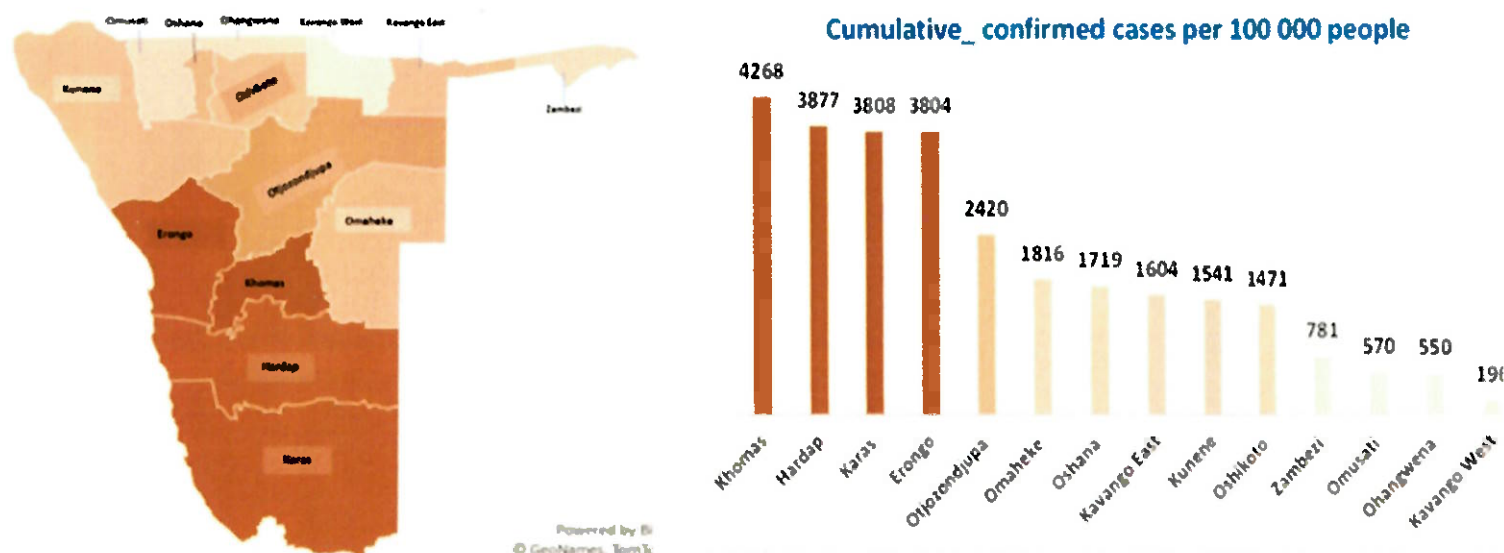


Figure 3: Distribution of cumulative confirmed cases per 100 000 by region, 03 June 2021

Table 4: COVID-19 specimen recorded at the Laboratories 03 June 2021

| VARIABLES | TOTAL |
|--------------------------------------------------|--------|
| Total samples received by the Laboratory | 440488 |
| Total samples tested | 428167 |
| Total samples re-tested | 12204 |
| Total positive results | 57577 |
| Total negative results | 370537 |
| Total samples discarded | 117 |
| Invalid results | 0 |
| Total pending results | 46 |
| Indeterminant/Inconclusive | 7 |
| Suspected cases in 24 hours (excluding re-tests) | 2227 |

- To date, **440371** tests (including **12204** re-tests) have been conducted by NIP, Path-Care, NAMDEB, UNAM, Namib Poultry, Diagno, NAMPath, Namibia Central Pathology, High Care and Central Veterinary laboratories
- Since the beginning of the outbreak, **98124** contacts of confirmed cases have been identified, **579** new contacts were identified within the last 24 hours from 10 regions.
- Cumulatively, **94166** contacts have completed their monitoring period, while **118** contacts are lost to follow-up and a total of **14148 (25%)** contacts of confirmed cases have tested positive.
- Today, **2235 (70%)** out of **3171** active contacts were monitored.

Table 5: Number of people in mandatory quarantine facilities, 03 June 2021

| Region | Newly quarantined 24 hours | Cumulative number | Number discharged | Number in quarantine now |
|-------------------------|----------------------------|-------------------|-------------------|--------------------------|
| Erongo | 0 | 5683 | 5608 | 75 |
| Hardap | 0 | 1948 | 1888 | 60 |
| Kavango (East and West) | 5 | 1453 | 1432 | 21 |
| Khomas | 0 | 3501 | 3478 | 23 |
| //Kharas | 29 | 6680 | 6286 | 394 |
| Kunene | 85 | 5192 | 5130 | 62 |
| Ohangwena | 0 | 695 | 695 | 0 |
| Omaheke | 90 | 7641 | 7363 | 278 |
| Omusati | 0 | 948 | 569 | 379 |
| Oshana | 0 | 400 | 400 | 0 |
| Oshikoto | 49 | 13507 | 13156 | 351 |
| Otjozondjupa | 0 | 1540 | 1540 | 0 |
| Zambezi | 0 | 1791 | 1624 | 167 |
| Total | 258 | 50979 | 49169 | 1810 |

➤ Since March 2020, **50979** people have been placed into mandatory quarantine facilities around the country.

➤ A total of **1810** people are currently in quarantine, with **258** new admissions.

PUBLIC HEALTH ACTION (S)

- The COVID-19 vaccination programme is ongoing throughout the country
- The government and development partners continue to prioritize the continuation of essential health services.

CHALLENGES

- Slow vaccine uptake among members of the public, and circulation of anti-vaccination information.
- Non-adherence to COVID-19 Infection Prevention and Control (IPC) measures by the general public.

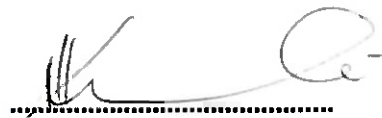
RECOMMENDATIONS

- Encourage the public to get vaccinated, and strengthen community health awareness to counter anti-vaccination information in circulation.
- Continue to give awareness on the importance of adhering to COVID -19 IPC measures; with the involvement of the Security Cluster.

APPROVED



INCIDENT MANAGER
03 June 2021



SECRETARIAT

For enquiries, please contact
Namibia Public Health Emergency Operations Centre;
 PHEOC@mhss.gov.na
 0800 100 100
 0851 100 100